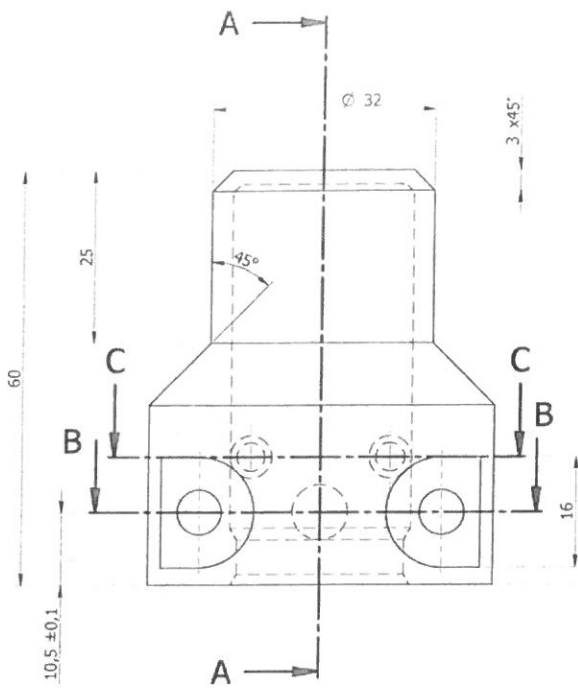
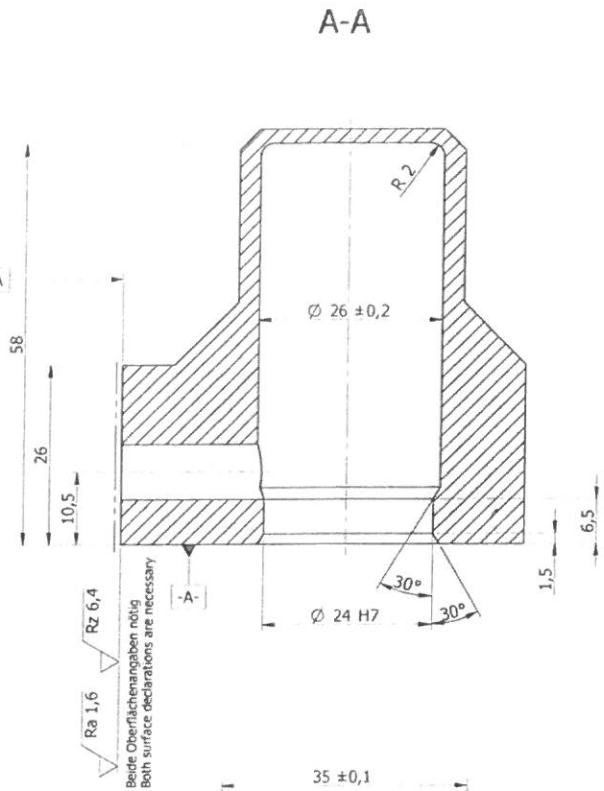


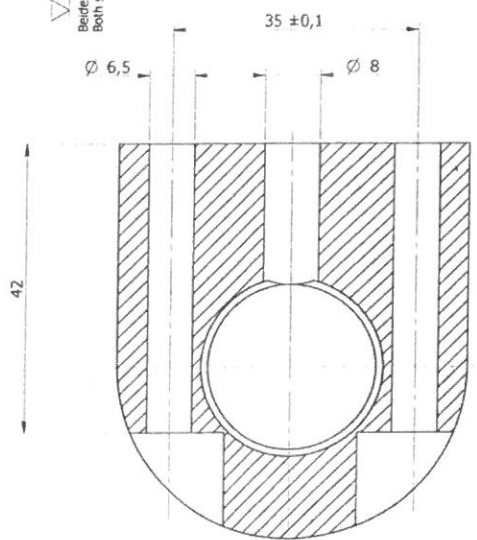
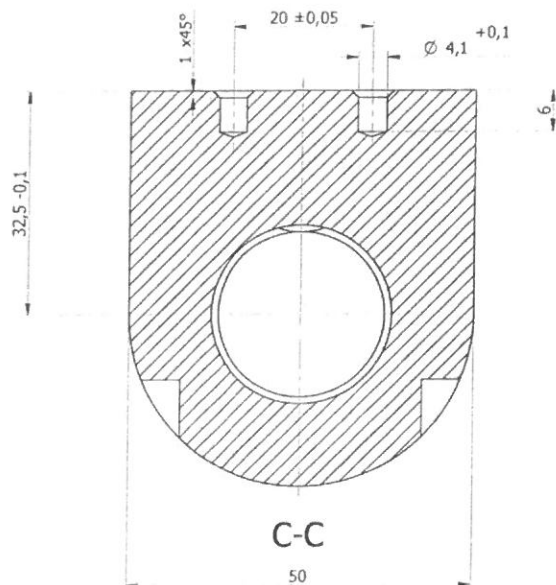
N-17-1610



±0,02 A
 +0,1
 18,5
 Angabe für Schnitt C-C
 specification for cross section C-C



Rz 6,4
 Ra 1,6
 Beide Oberflächenangaben nötig
 Both surface declarations are necessary



1.000x

B-B Dávka: 1000 ks
 mot: 1.4571

±0,2 ±0,2
 1,6 (Rz 6,4)

Passmass fit size	Abmasse deviations	Grenzmasse limit sizes
24 H7	+0,021 0,000	24,021 24,000

Ähnlich/Similar to
 0-901-891-086

05

Allgemeintoleranzen nach/ admissible tolerance to:		Oberflächenangaben nach/surface according to ISO 1302 Nennmaß/nominal size s Längenmaß/linear measure							Länge des kürzeren Schenkels/ measure of short blade s				
ISO 2768 - mk		0,5-3	6	30	120	400	1000	2000	4000	10	50	120	400
Spanen, Umformen/chipping, forming		±0,1	±0,1	±0,2	±0,3	±0,5	±0,8	±1,2	±2,0	±1°	±30'	±20'	±10'
Erstellt/created: 01.09.09 Gruber W.		Geprüft/verified:					Maßstab/scale: 2:1		Blatt/sheet: 1/1				
Gehäuseoberteil housing top part										☐◎			
Version 05	Änderung/change 5001279200		0-902-041-427						A2				
© 2009 - No utilisation, copying and/or distribution without author's consent. Fertig.Freigabe(FF): Schmidt Gabriele, 03.11.16													