

sharing the same goal.



AF 2 COMPACT LINE

Washer disinfector for human waste containers



COMPACT LINE

high technology in reduced space



DWC - Disinfected Water Cooling

After the disinfection phase for cooling down the temperature, the water, immediately previous to be flushed in washing chamber is automatically disinfected to ensure freedom from microbial contamination according to the standard EN ISO 15883-1 5.3.2.5



ETS - Emptying Total System

System for automatically emptying all the water present at the end of each cycle from the water pump, the water storage tank and pipes in order to ensure freedom from microbial contamination inside the machine. According to the standard EN ISO 15883-1 5.3.2.1 & 5.5.1.1



SDS - Self Disinfection System

Function that allows the machine with a disinfection program after 24 hours from the last cycle.



DCS - Drain Control System

Safety device that prevents use of the machine if drain trap is clogged.



HANDS FREE STARTING

The user can start the machine without remove his gloves by actioning the program with the elbow. This feature supports the cross infection prevention.

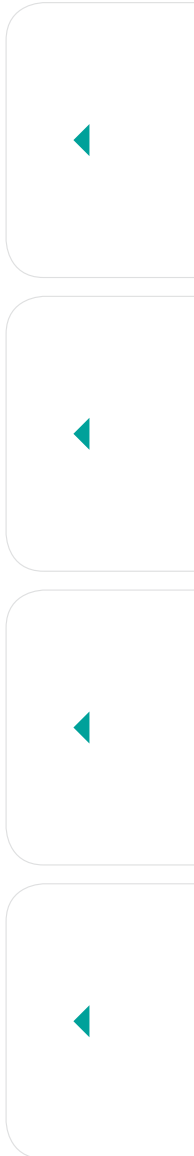


AUTOMATIC DOOR OPENING

The operator can open and close the door by pushing the foot pedal or activating the optical sensor on the touch panel.



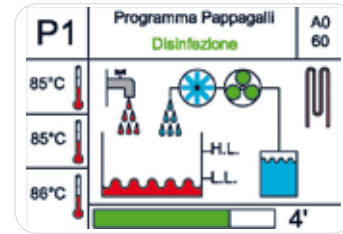
OPTIONAL





EHMI - Easy Human-Machine Interface

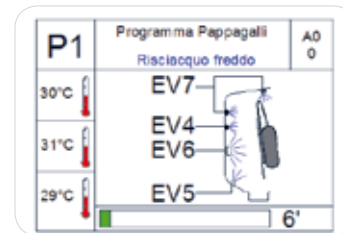
Graphic display for an easy communication between machine and user. Top technology visualization to assure a detailed information for friendly control of machine features.



ENC

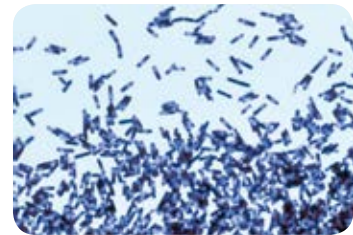
ENC - Electronic Nozzles Control

Intelligent control of water flow, pressure and injection system to improve the washing performance.



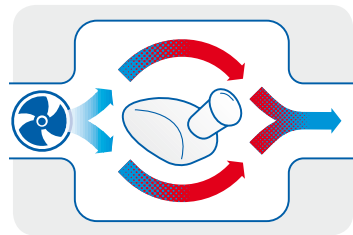
HDS - High Disinfection System

Special ©AT-OS disinfection program with direct spraying appliance against CLOSTRIDIUM DIFFICILE bacterium. Test approved by the German University of Bonn.



ACS - Air Cooling System

After the disinfection phase cold air will be introduced by a fan in the washing chamber, to cool down the temperature, condense the steam and dry the containers. This appliance also avoid the aerosol effect for the operator and the thermodynamic contamination of the room.



The Product Range

AF2 COMPACT LINE

Dimension: WxDxH mm



AF2-45P Stand alone

Column floor mounted with plinth, wall or floor drain trap connection. Thermal disinfection with built-in steam generator.

► Dimension 450 x 500 x 1500



AF2-45M Wall-hung

Wall-Hung mounted, wall drain trap connection. Thermal disinfection with built-in steam generator.

► Dimension 450 x 500 x 1500



AF2-45M Small

Wall-Hung mounted, **With reduced height** wall drain trap connection. Thermal disinfection with built-in steam generator.

► Dimension 450 x 500 x 1350



AF2-45I Wall built-in

Wall built-in with assembly frame. Drain trap connection. Thermal disinfection with built-in steam generator.

► Dimension 500 x 1550



AF2-45 IWC Wall built-in with WC

Built-In with assembly frame, completed with small materials for fixing the toilet and drain trap connection. Thermal disinfection with built-in steam generator.

► Dimension 500 x 1550



AF2-75 B/860 Counter-top

Under-Top floor mounted with plinth to be placed under a work-plate. Wall or floor drain trap connection. Thermal disinfection with built-in steam generator.

► Dimension 750 x 600 x 860
with top H = 900

Support and accessories

Bedpans and urine bottles support

Standard Supports

- ▶ Bedpan and urinal
- ▶ Commode and urinal
- ▶ Bedpan with cover and urinal
- ▶ Commode with cover and urinal

The urinals are emptied automatically during the closing of the door. It is possible to disinfect up to **3 urinals** per cycle.



BASKET FOR SMALL ARTICLES



Opening and closing system

Manual version



OPENING



CLOSING



START-UP

Automatic opening with elbow start: version E



OPENING



CLOSING/START-UP

Automatic opening: version A



OPENING



CLOSING/START-UP

Technical features

AF2 Compact Line Bedpan Washer Disinfector

TECHNICAL FEATURES	AF2 C-LINE
Approvals MDD 93/42/EEC en iso 15883-1 AND 15883-3	•
DVGW Certified plumbing system, designed to isolate the potable water pipeline system (water-gap) as prescribed by European Standard EN1717 just like all the plumbing	•
Manufactured of AISI 304 (DIN 1.4301) stainless steel Scotch Brite finish	•
Washing chamber MOLDED one-piece without welds and with rounded wide-radius corners for maximum hygiene	•
USB port for connection to a personal computer for software upgrades	•
Complete with 4 washing programs: NORMAL for solid waste ECONOMY for liquid waste - INTENSIVE for tough waste - EXTRA additional custom program	•
THERMAL DISINFECTION WITH A BUILT IN STEAM GENERATOR complete with internal water controlling probe and a protected thermostat	•
Ao Value setting between 60 to 6000. The machine displays the Ao value reached and its calculation so that it shall be verified with the disinfection conditions according to EN ISO 15883-1 / 3 European Standards	•
Temperature sensor PT1000 in the washing chamber	•
Softener dosing pump complete with level monitoring in the canister and dosage adjustable from the control keyboard	•
Detergent dosing pump complete with level monitoring in the canister and dosage adjustable from the control keyboard	+
Flow-meter for monitoring the correct quantity of chemical liquid used during the cycle. (EN ISO 15883-1 p.4.2.2 - 4.2.3)	•

• standard | + optional



CSSD

SLUICE ROOM

SERVICES

OP ROOM

AT-OS
DISINFECTION TECHNOLOGY

AT-OS Srl

Viale del Lavoro, 19 - 37030 Colognola ai Colli - Verona - ITALY

Tel (+39) 045 6159411 - Fax (+39) 045 6159422

info@at-os.com | www.at-os.com

