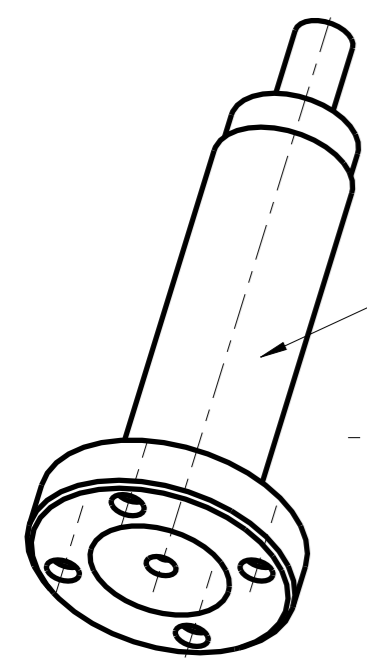
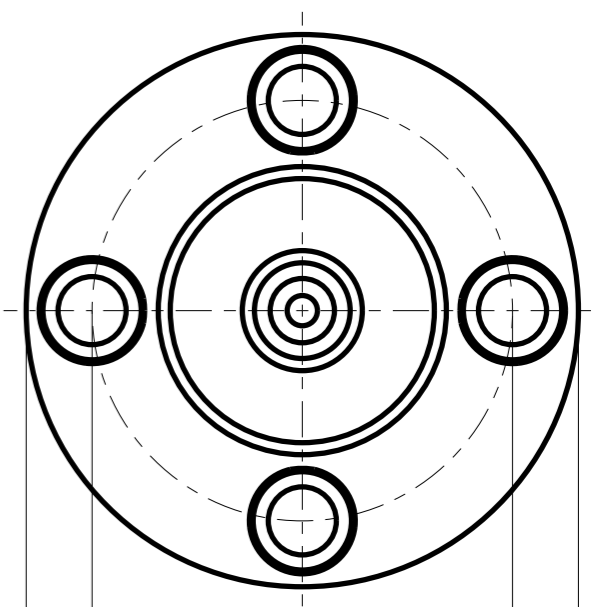
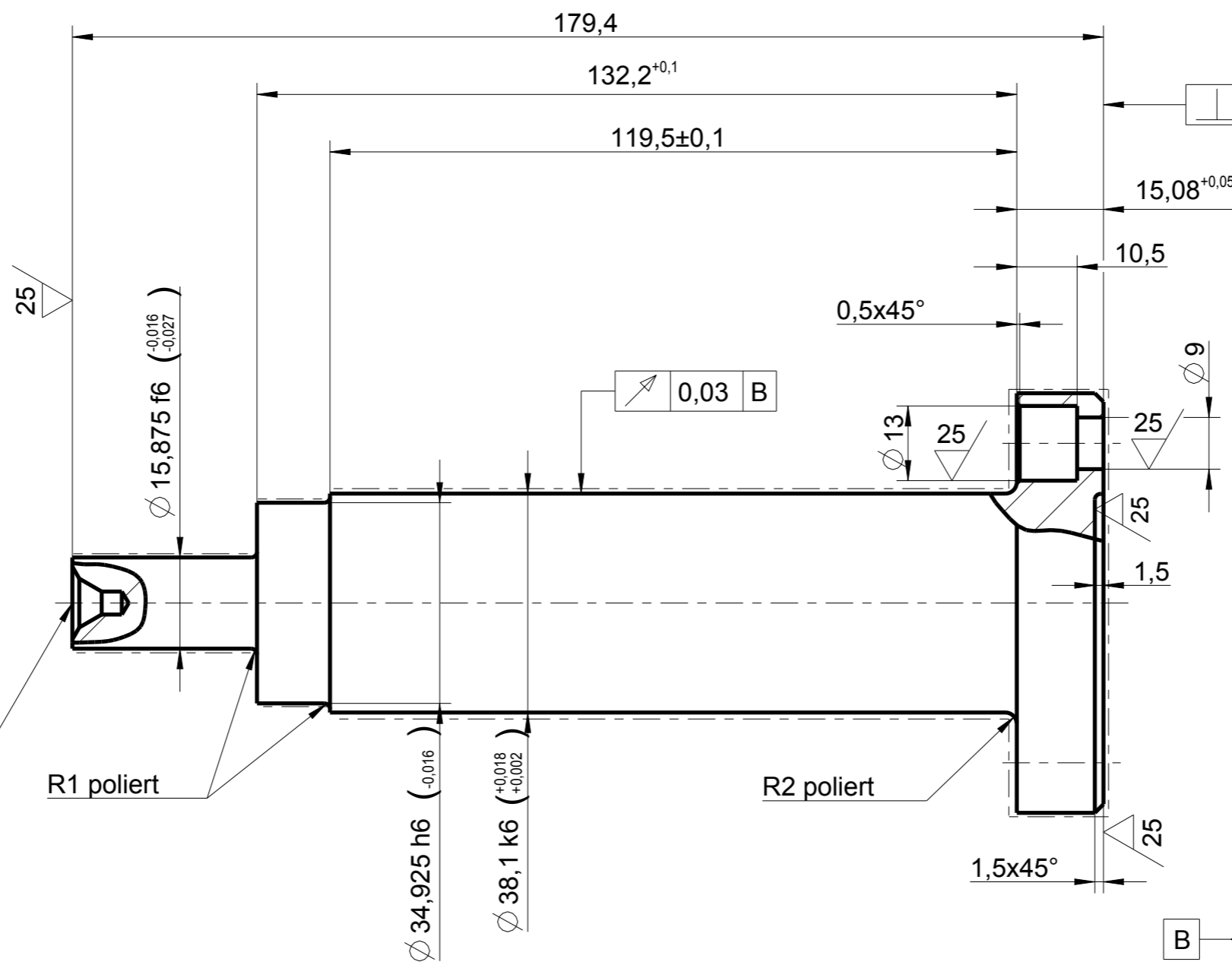


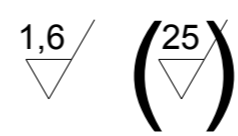
Zentrierbohrung  
DIN 332-B4/8.5




1:2

Hier mit Lieferantenkennzeichen -  
Artikel Nr. & Aenderungsindex versehen

Komplett im Einsatz gehaertet (Badeinsatz)  
HRC 58±2  
Haertetiefe: 0.4-0.6mm  
Nach dem Haerten Werkstueck auf Haerterisse pruefen!



B12.08.2010 ProE Zeichnung erstellt				Krystek	0
Date	Alteration			Name	Q
This drawing and the subject matter thereon is the exclusive property of GPS GmbH Essen and is to be treated as confidential proprietary information. It shall not be duplicated or disclosed to others by any means without express written consent of GPS GmbH Essen and will be returned to GPS GmbH Essen upon request. This basis is forbidden to third parties. Furthermore the sale of parts manufactured on.		Scale:1:1	Material: 15NICR13	Model-No.:	
Dsgn.: 13.09.2002	Groeters	Our Ref.No.:		07110108	
Rel.: In Arbeit	IS-MACHINE 5-1/2"		Sheet 1 of 1		
Common tolerance ISO 2768-mH		SHAFT		DIN A3 Pro/E	
D-No: 07110108 B		Int.-No.: 23-6425		 Glasproduktions-Service GmbH	
Sub.: 3351-14-211		Group-No.: 07110050			