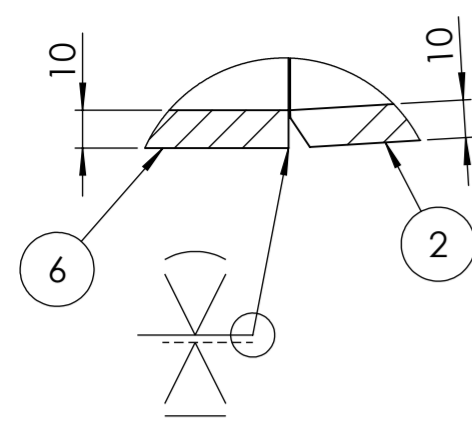
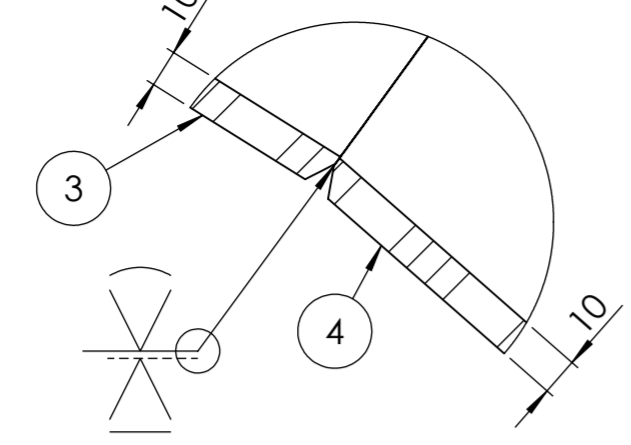


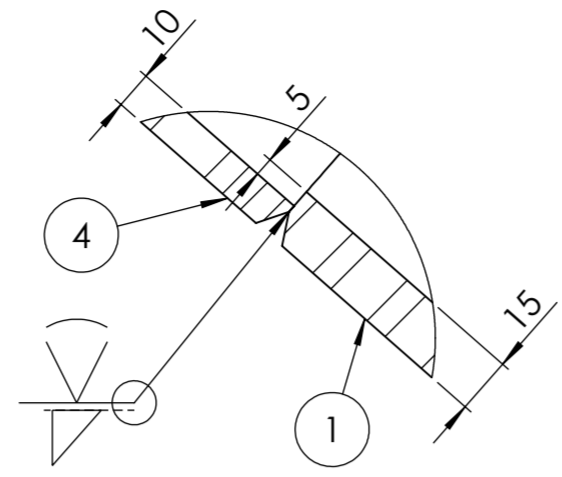
Posnr.	PartNo	QTY.	Description	Reference draw.	Length	Width	Thickness	Diameter	Material	Weight
1	JVA-M-150-1	1	Maskinert Ende Ø532mm	JVA-M-150	450mm	-	15mm	Ø532mm	AISI 304	86.80
2	JVA-M-150-2	1	Bend Seksjon-1 -4deg Overgang kon	JVA-M-150	1776mm	460mm	10mm	Ø532mm / Ø580mm	S355J2G3	50.48
3	JVA-M-150-3	4	Bend Seksjon-2 -8deg	JVA-M-150	1636mm	449mm	10mm	Ø532mm	S355J2G3	52.08
4	JVA-M-150-4	1	Bend Seksjon-3 - 5,30deg	JVA-M-150	1636mm	249mm	10mm	Ø532mm	S355J2G3	28.21
5	JVA-M-150-5	2	Rib Bend	JVA-M-150	-	80mm	10mm	Ø695mm / Ø535mm	S355J2G3	11.84
6	-	1	Demontesjeboks PVW DN500 PN40	-	300mm	-	10mm	DN500 / Ø580mm / Ø532mm	S355J2G3	107.62



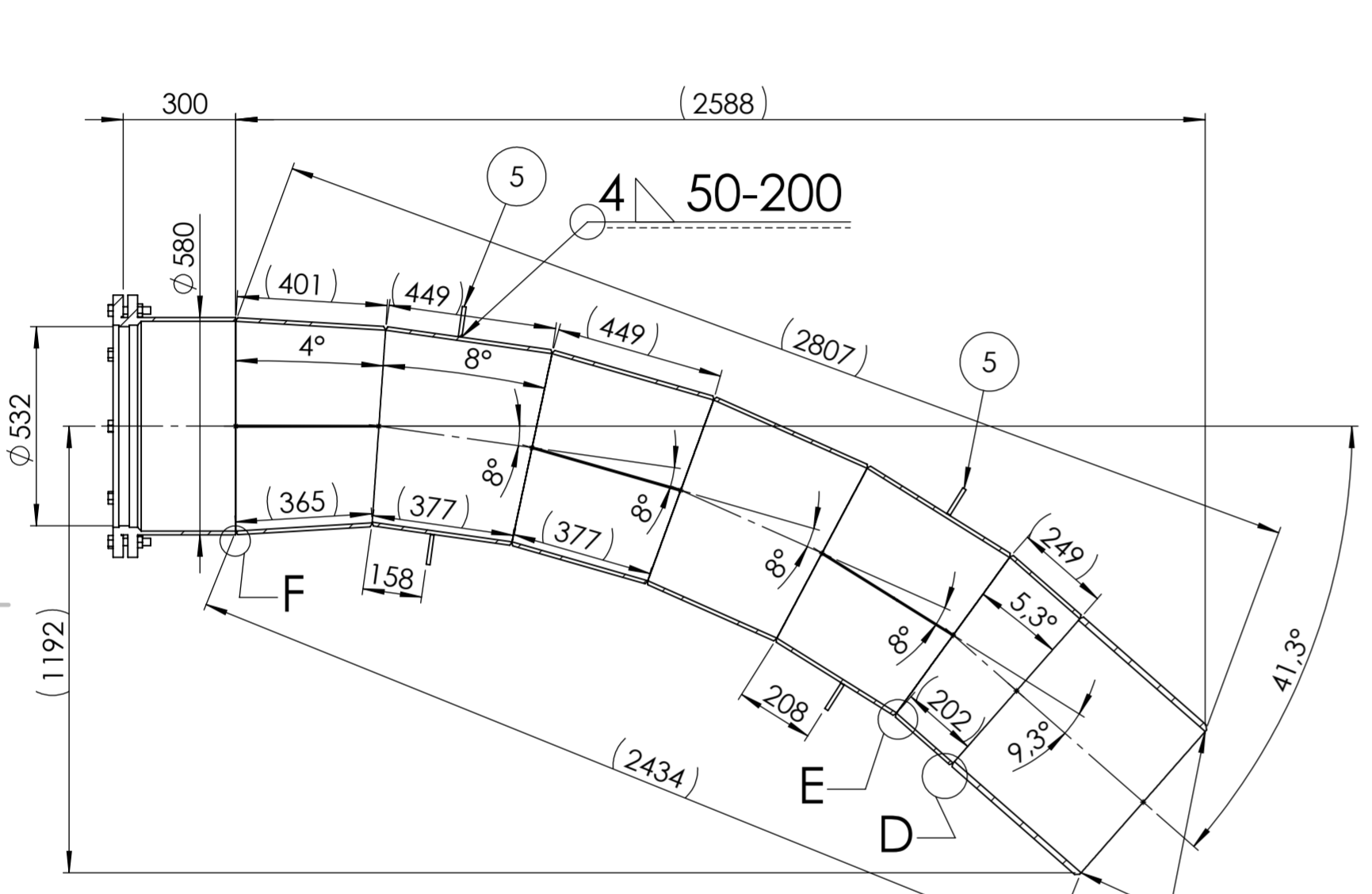
DETAIL F
SCALE 1 : 2



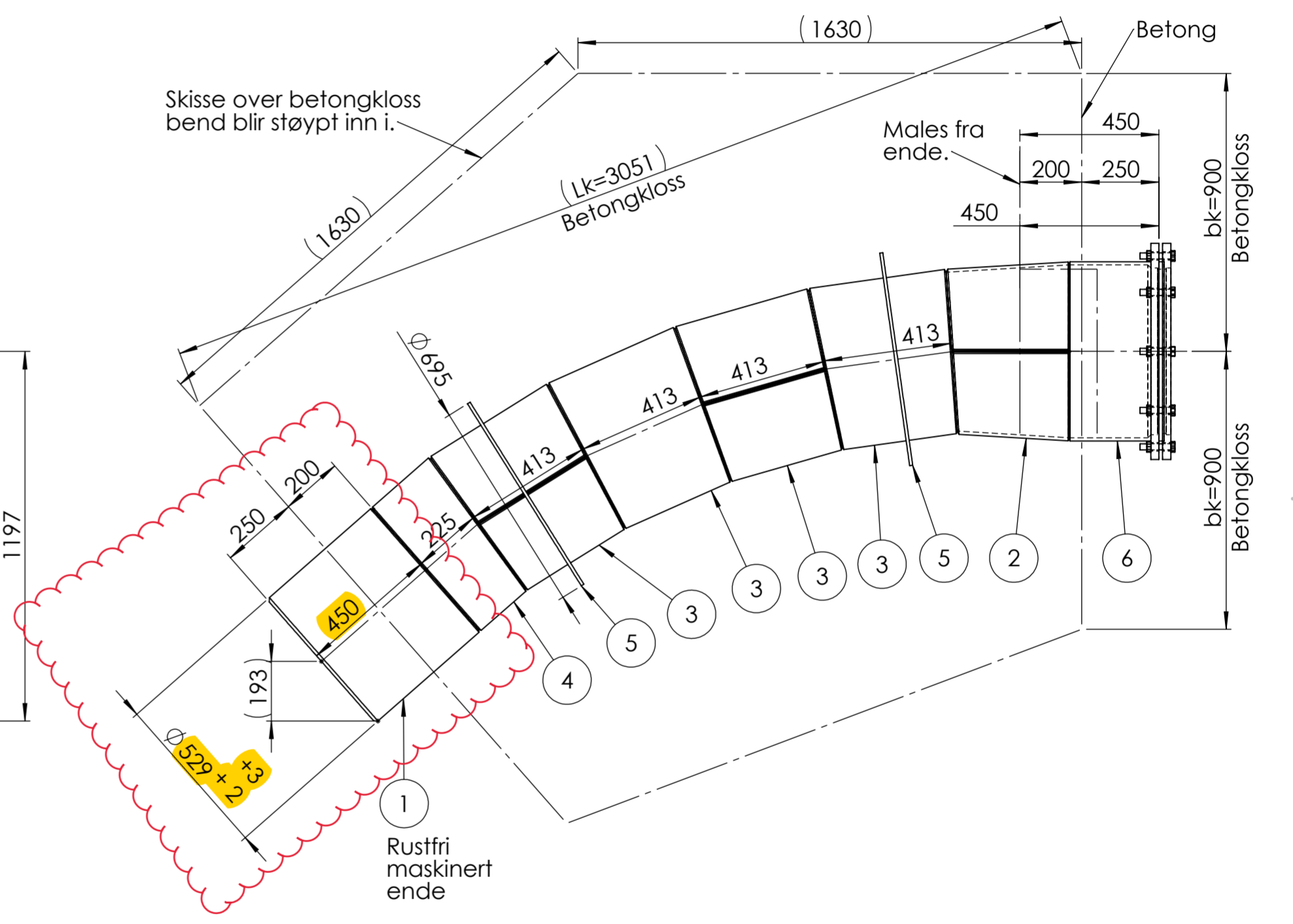
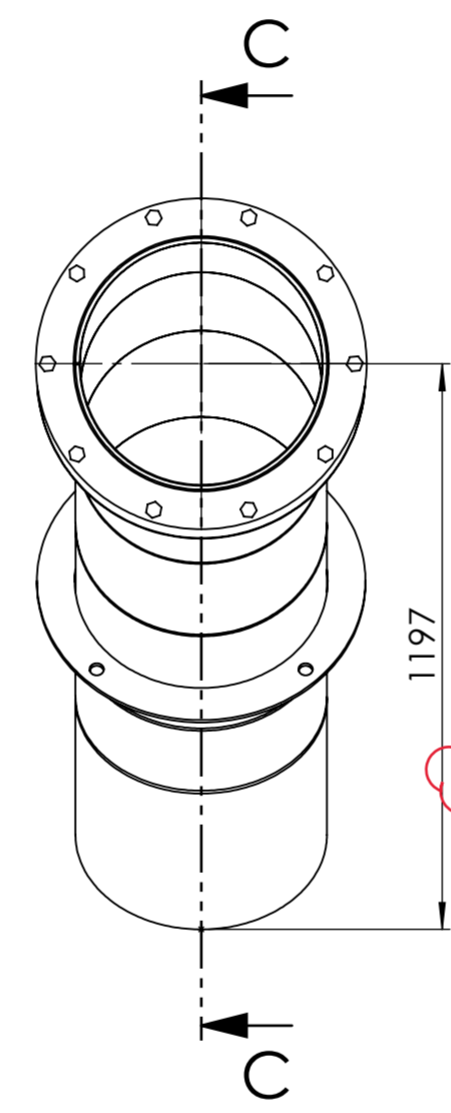
DETAIL E
SCALE 1 : 2



DETAIL D
SCALE 1 : 2



SECTION C-C



General Tolerances		
Sveising / Welding		
EN ISO 13920 B		
Basic size range	Perm	
Over	Up to	Devia
	30	±1
30	400	±2
400	1000	±3
1000	2000	±4
2000	4000	±6
4000	8000	±8
8000	12000	±10
12000	16000	±12
16000	2000	±14
2000		±16
General Tolerances		
Maskinering / Machining		
ISO 2768-1m		
Basic size range	Perm	
Over	Up to	Devia
0,5	3	±0,1
3	6	±0,1
6	30	±0,2
30	120	±0,3
120	400	±0,5
400	1000	±0,8
1000	2000	±1,2
2000	4000	±2
4000	8000	±3

Overflatebehandling:
Maling for vannberørte flater og for flater utsatt for kondens

Sandblåst Sa 2,5

Maling 1x250µ To-komponent epoksi
1x250µ To-komponent epoksi

Totalt 500µ

Farge Lys Grå

Flatene blåsrensens til Sa 2,5 og grunnes i henhold til punkt 8.2 (ref. Energi Norge 416-2017). Før innstøping fjernes fett, løsrust og støv. Konstruksjonen skal være korrosjonsbehandlet minst 200mm innenfor overgangen til betong.

Surface treatment:
Paint for water affected surfaces and surfaces exposed to condensation

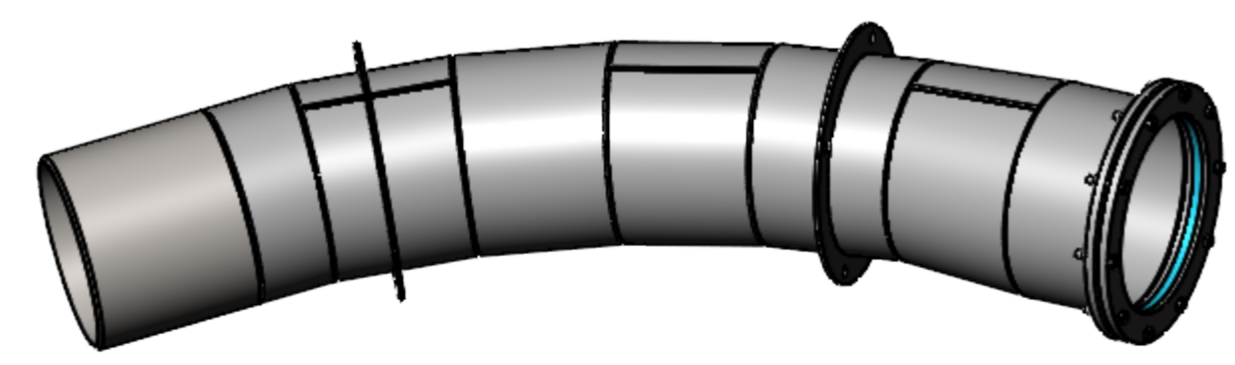
Sandblasted Sa 2,5

Paint 1x250µ Two-component epoxy
1x250µ Two-component epoxy

Total 500µ

Colour Light Gray

The surfaces are blast cleaned Sa 2,5 and primed according to paragraph 8.2 (ref. Energi Norge 416-2017). Before embedded in concrete, remove grease, loose rust and dust. The construction should be corrosion-treated at least 200mm within the transition to concrete.



Dato / Date 15.06.23	Tegnet / Drawn MB	Kontrollert / Checked GKS	Godkjent / Approved JNK	Proj. metode / Proj. method	Målestokk / Scale 1:16
Titel / Title Bend mot DSJ DN500 C40 Sammensatt Arr.					
Tegn. formål / Drwg. purpose Produksjon		Anlegg / Site Jørnevikelva	Endring / Rev. 0	Vekt / Weight 505.12 Kg	Overliggende tegn. / Parent Drwg.
ITP		Tegningsnr / Drwg. no JVA-M-150		Format / Size A2	
Side / Page 1		av / of 6			