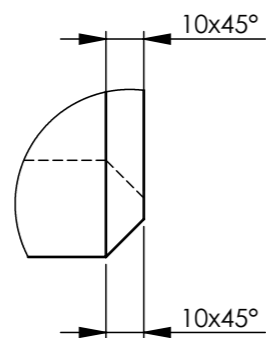


DETAIL A
SCALE 1:2



1. REZAT TYC (POLOTOVAR 7,5m) NA POLOVICU cca 3,77m
2. ODREZAT KONCE NA ROZMER 2510mm vid vykres 2/2!!!

POLOTOVAR:

bezošvá oceľová rúrka 101,6 x 27,6 mm podľa EN 10297 - 1
materiál MW 450 - /20MnV6/ - **STN 13 320**

1/2

A	INDUSTRIALISATION	F.ROLLAND		23/07/2015
IND	MODIFICATION	DESSINATEUR	VERIFICATEUR	DATE

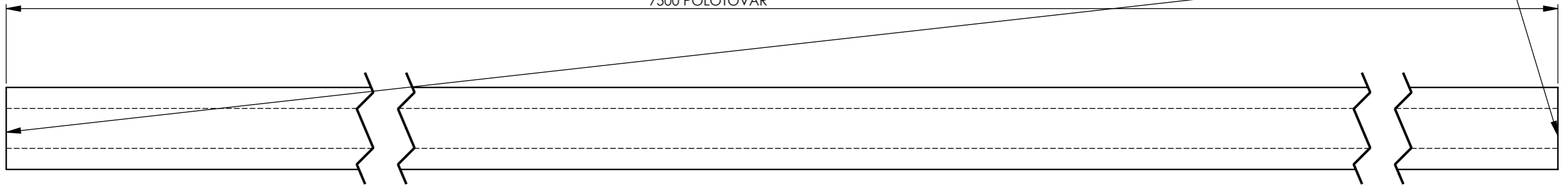
200402A	COULISSEAU MALE 2500 S330															
 www.pellenc.com	Traitement/Treatment	NITRURATION 500Hv mini 0.3->0.5 GAZEUSE	(Gr)	115975.65												
	Matière/Material	20MnV6 / 20MV6	Ech./Scale	1:5												
	Concepteur/Designer	F.ROLLAND														
	Date	20-01-15														
	Dessinateur/Drafter	T.CICMAN														
Date	11-05-16	<table border="1"> <tr> <th colspan="4">TOLERANCES GENERALES SAUF INDICATION</th> </tr> <tr> <td>+/- : 0,5 mm</td> <td>H/h : 13</td> <td>Perp +/- : 5 mm/m</td> <td></td> </tr> <tr> <td>J/j :</td> <td>Ra : 3,2</td> <td>CCtr : 0,2 mm</td> <td></td> </tr> </table>			TOLERANCES GENERALES SAUF INDICATION				+/- : 0,5 mm	H/h : 13	Perp +/- : 5 mm/m		J/j :	Ra : 3,2	CCtr : 0,2 mm	
TOLERANCES GENERALES SAUF INDICATION																
+/- : 0,5 mm	H/h : 13	Perp +/- : 5 mm/m														
J/j :	Ra : 3,2	CCtr : 0,2 mm														

1. REZAT TYC (POLOTOVAR 7,5m) NA POLOVICU cca 3,77m

1. CUT TUBE (RAW MATERIAL 7,5m) HALF LENGHT cca 3,77m

RAW MATERIAL
7500 POLOTOVAR

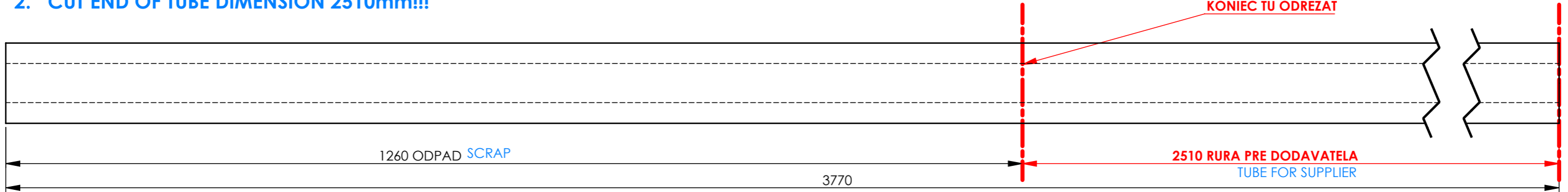
DEFORMATION ON END OF TUBES
KONCE RUR SU KRIVE



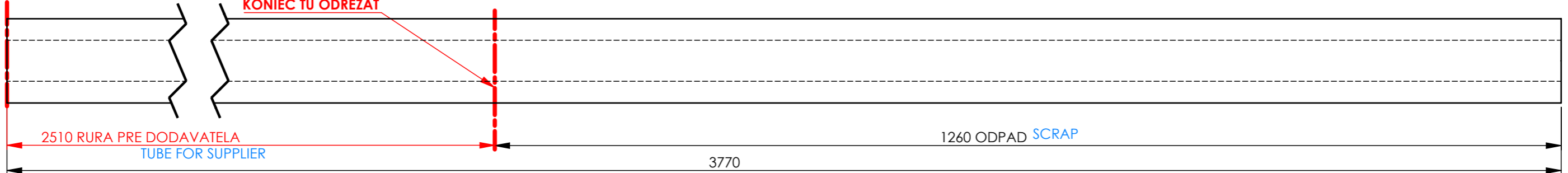
2. ODREZAT KONCE NA ROZMER 2510mm!!!

2. CUT END OF TUBE DIMENSION 2510mm!!!

CUT TUBE HERE - DEFORMED AREA - END OF TUBE
KONIEC TU ODREZAT



CUT TUBE HERE - DEFORMED AREA - END OF TUBE
KONIEC TU ODREZAT



3. OBE ODREZANE TYCE 2510mm POSLAT DO KOOP !!!

3. BOTH TUBE LENGHT 2510mm SHIP TO SUPPLIER

2/2

200402A

POLOTOVAR REZANIE POSTUP



www.pellenc.com

Traitement/Treatment	NITRURATION 500Hv mini 0.3->0.5 GAZEUSE ⁴	(Gr)	175441.68
Matière/Material	20MnV6 / 20MV6	Ech./Scale	1:5
Concepteur/Designer	F.ROLLAND		
Date	20-01-15		
Dessinateur/Drafter	T.CICMAN		
Date	11-05-16		
TOLERANCES GENERALES SAUF INDICATION			
+/- : 0,5 mm		H/h : 13	Perp +/- : 5 mm/m
J/j :	Ra : 3,2	CCtr : 0,2 mm	

This document is the intellectual property of PELLENC SA and should not be copied or disclosed to any third party without our prior consent