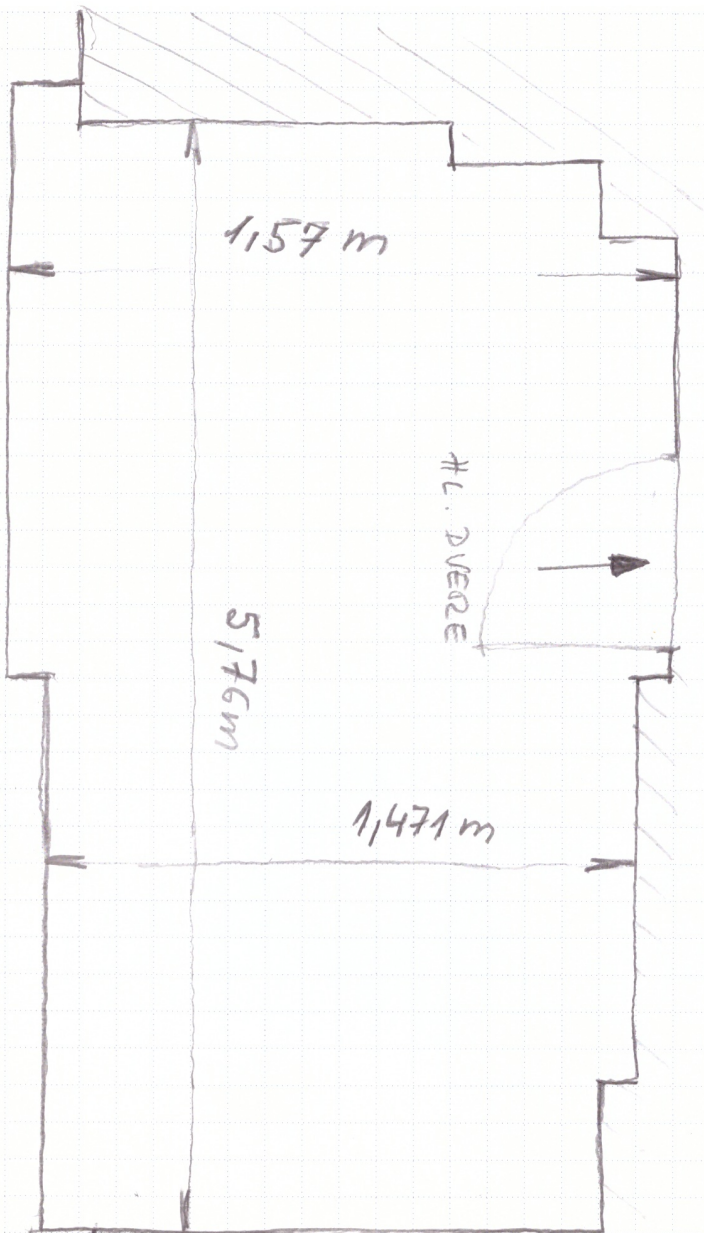


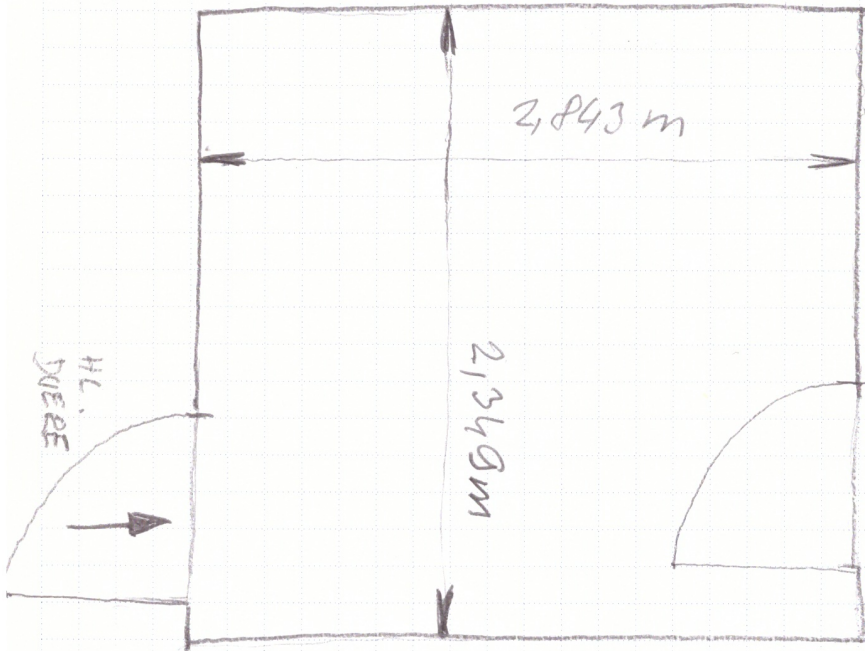
KALINOVSKÁ 4

PRIESTOR PRED VSTUPOM DO VCHODU

$$P = 5,76 \times 1,471 = 8,47 \text{ m}^2$$



KALINOVSKÁ 4
VNÚTORNÁ CHODBA ZA HL.
DVERAMI

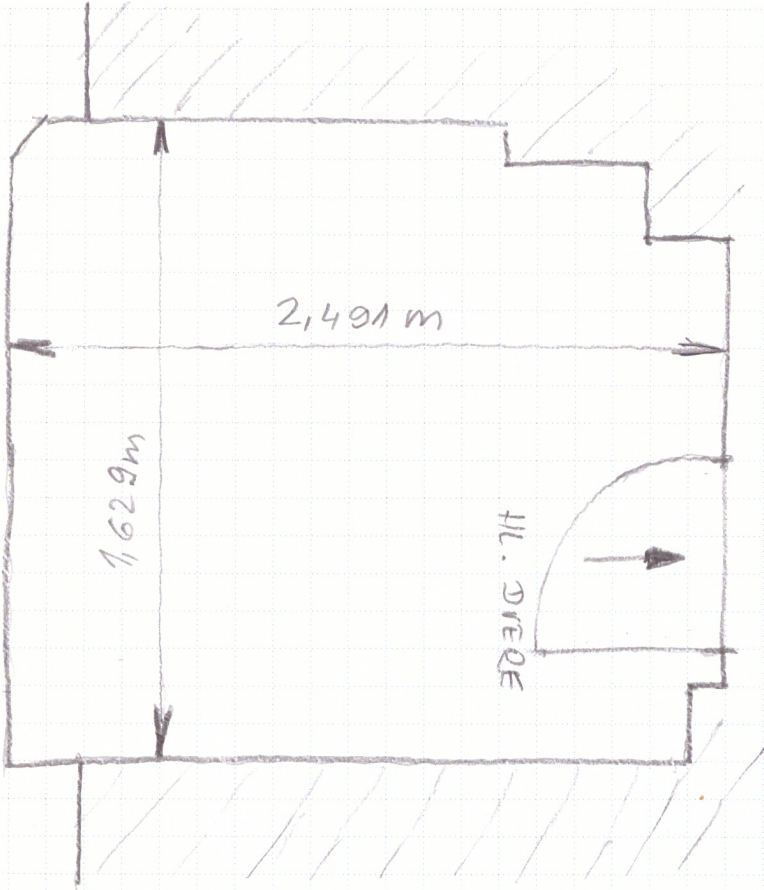


$$P = 6,68 \text{ m}^2$$



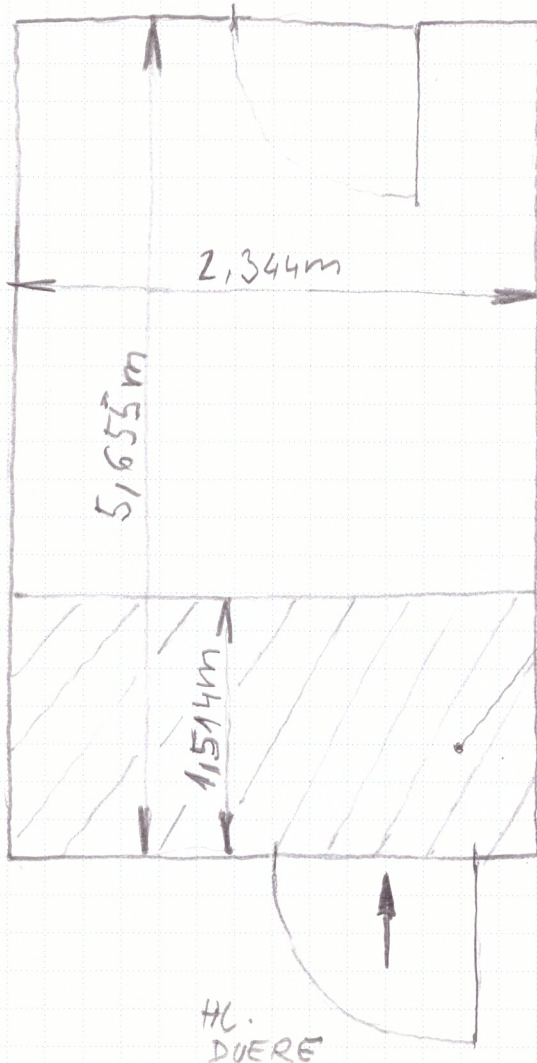
KALINOUSIA 6

PRIESTOR PRED VSTUPOM DO VEHDODU



$$P = 4,06 \text{ m}^2$$

KALINOVSKÁ 6
VNÚTORNÁ CHOBA (ZA HL.
DUERAMI)



$$P = 2,344 \times 1,514 = 3,86 \text{ m}^2$$

PLOCHA VYMEŇI
DLAŽBY