

6

5

4

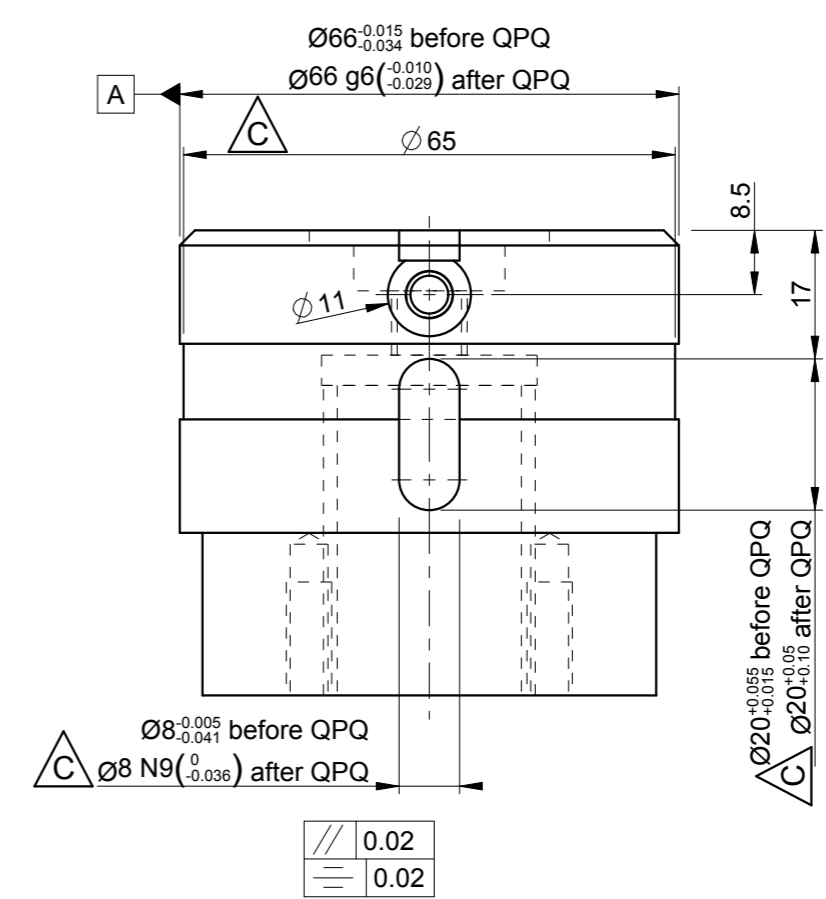
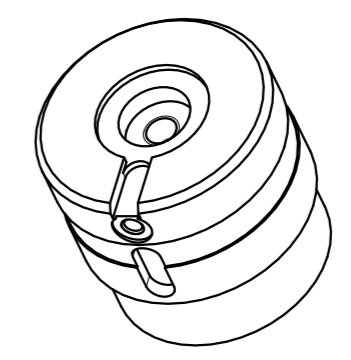
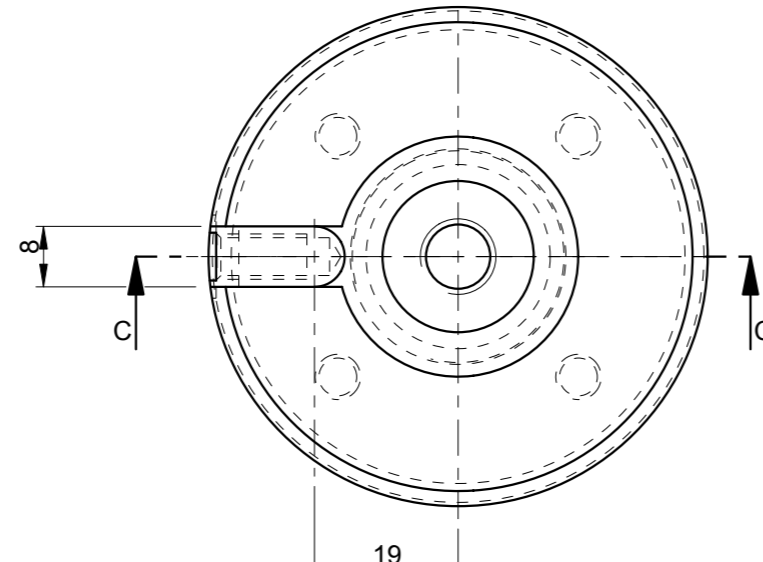
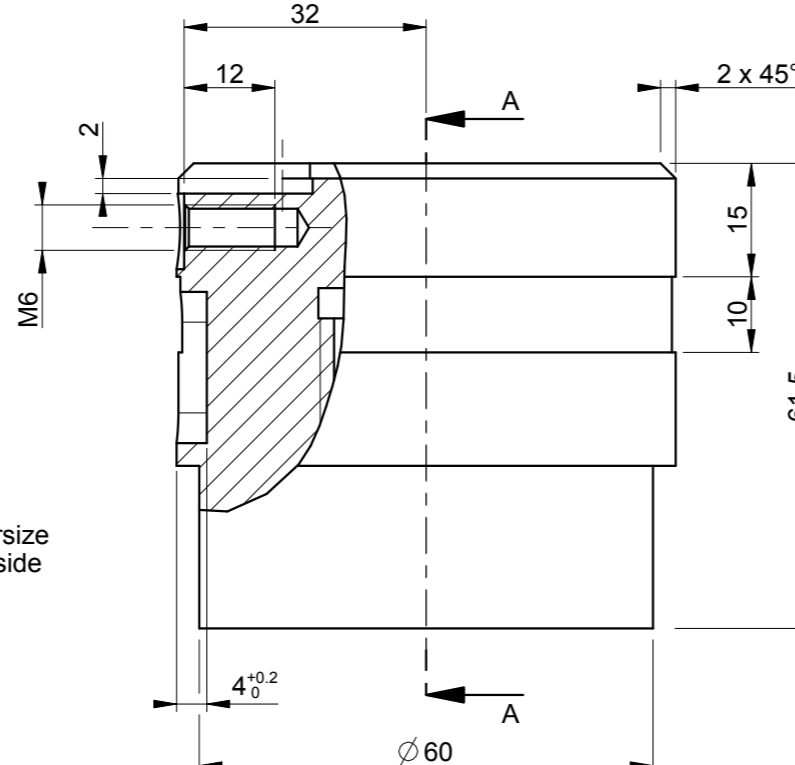
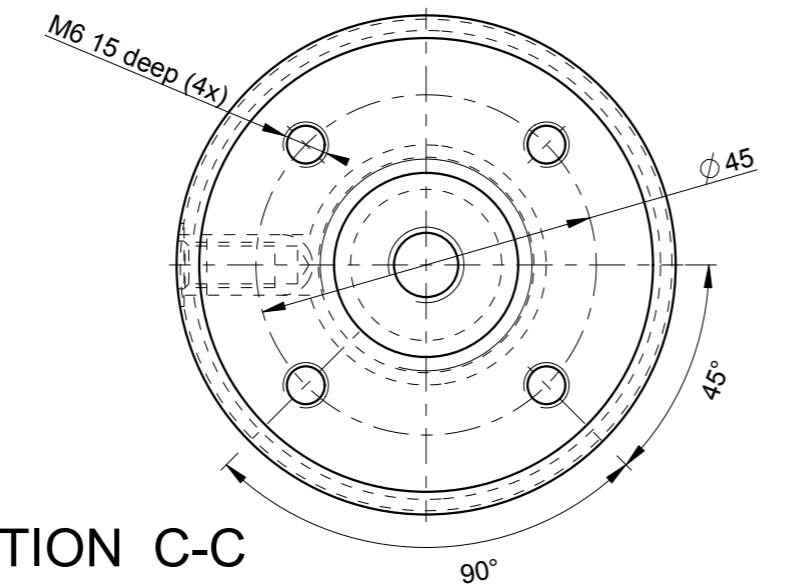
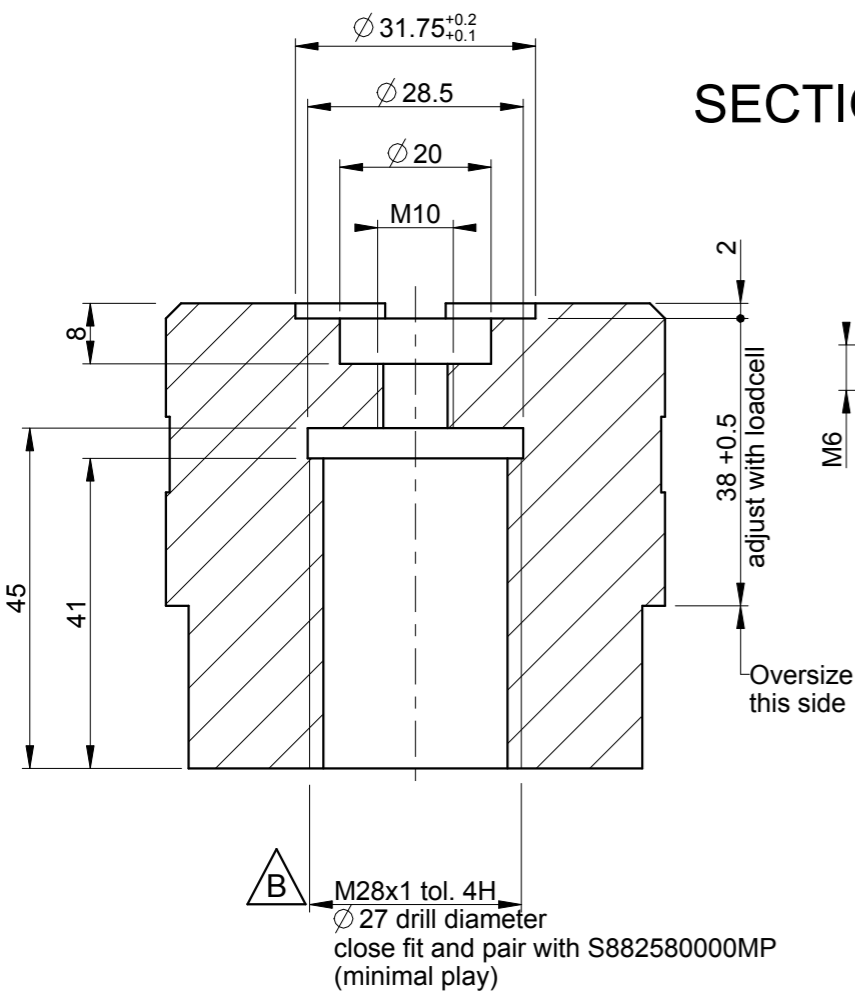
3

2

1

SECTION A-A

SECTION C-C



C	Added QPQ tolerances	JOHE	STVZ	2018-01-24
B	Chd tolerance M28x1	BALN	BALN	2014-07-31
A	-	STVZ	STVZ	2010-06-14
-	First Issue	WOLN	WOLN	2006-07-03
Rev	Revision Description	Creator	Approver	Date (yyyy-mm-dd)
Material : CK45 (1.1191)		Food Grade : NO	Scale : 1/1	1.6 (✓) (✓) (✓) (-0.5) (+0.5)
Treatment : QPQ coating - HV1 - 20 µm		Hardness : 450 HV	Units (mm)	Ra Acc. to ISO 4287 Acc to ISO 13715
Certificate : none		Based on : -	Total Area : 254 cm ²	Mass : 1.32 kg Tolerances acc. to ISO 2768 mK
Title			ID No	Rev
AXLE FILLING ADJUSTMENT (WITH SPRING)			S882570000MP	C
disassemble, reverse engineer, use or disclose to others this document or any of its contents without express prior written authorization. All rights reserved for patents, utility models and design rights (including related applications).				

6

5

4

3

2

1