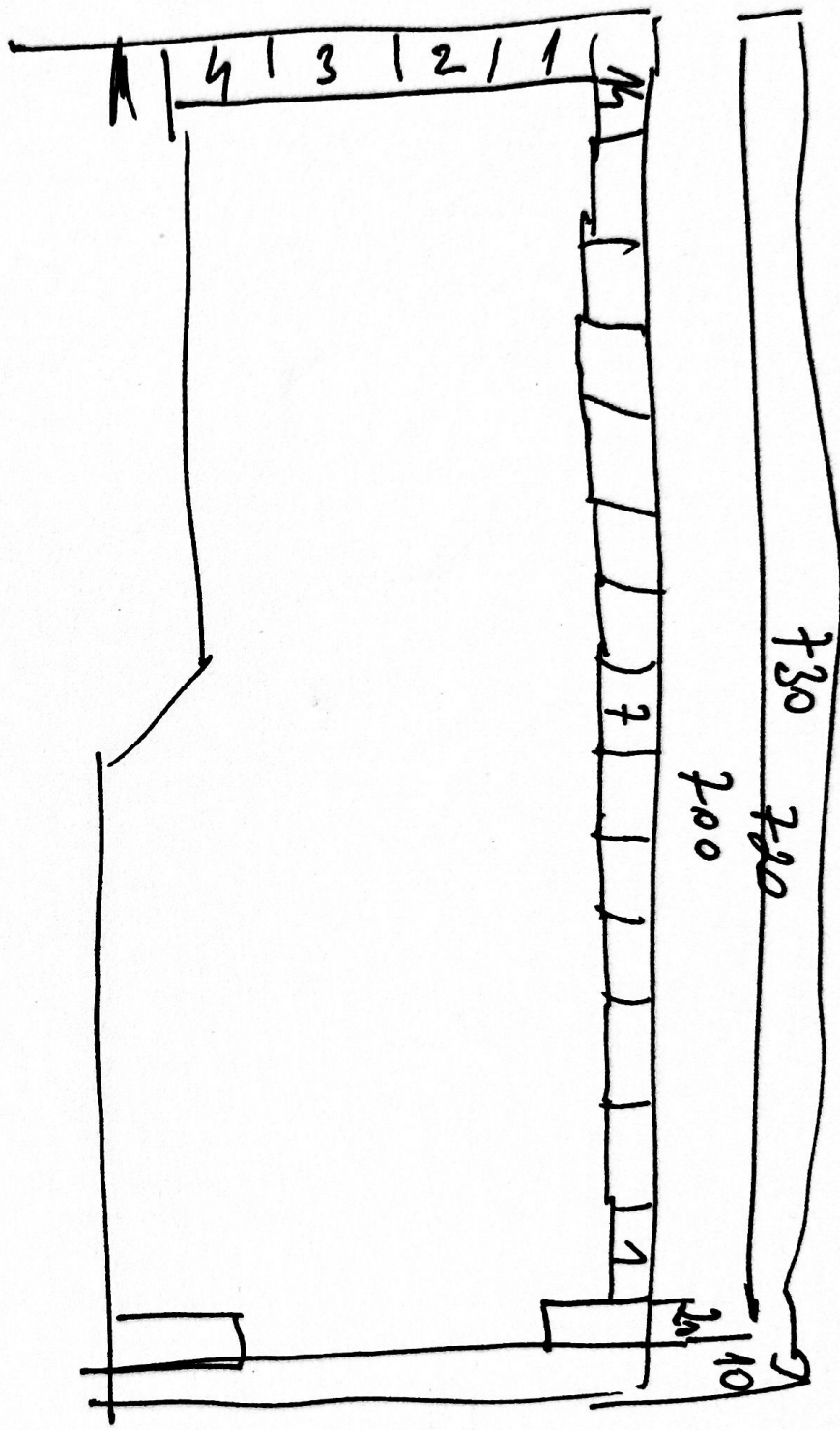


$$240 - 40 = 200 \quad | \quad 240$$



$$14 + 14 + 2 + 4 = 34$$

5 radou po okno! = 5 x 34 = 170 (3 packy) 180 a 516

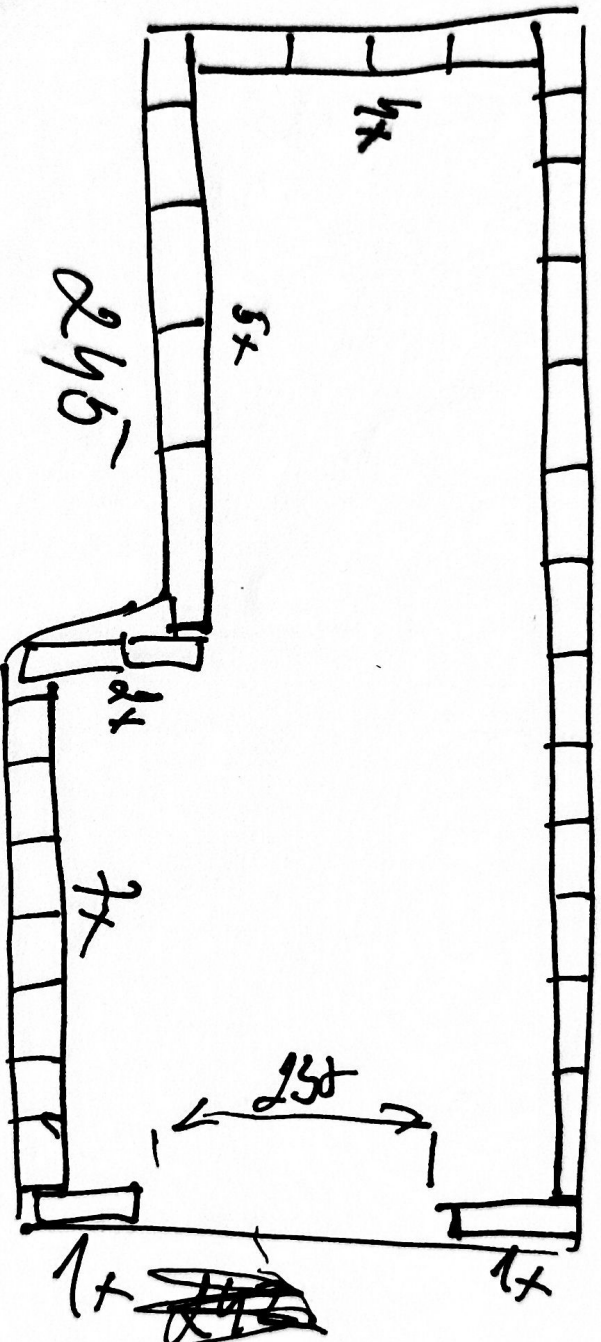
$$320 - 100 = 220$$

OBVOD 2925 m

200 x 200 x 500

753 (14,5)
14x

242



~~242~~
335 - 100 - 25 -

370
Bredine

2350 x 2100
(117)

1 RAD = 34 ks
6 Radov = 204 (3,4 pod)
pro oknu

3066