

MANUFACTURE ACCORDING TO B.S. 436 PART 2			
CLASS OF GEAR	8	CONSTANT CORD HEIGHT	STD
NUMBER OF TEETH	SEE VIEW	CONSTANT CORD THICKNESS	STD
MODULE	1	HELIX ANGLE	N/A
PRESSURE ANGLE	20°	LEAD	N/A
PITCH CIRCLE DIAMETER	N/A	HAND	N/A
BASE CIRCLE DIAMETER	N/A	BASE HELIX ANGLE	N/A
ADDENDUM	0.9	PART No. OF MATING GEAR	54206_418
DEDENDUM	1.25	RUNNING GEAR CENTRES	N/A
BACKLASH WHEN CHECKED WITH MASTER GEAR	STD	EXTENSION OF CENTRES	N/A

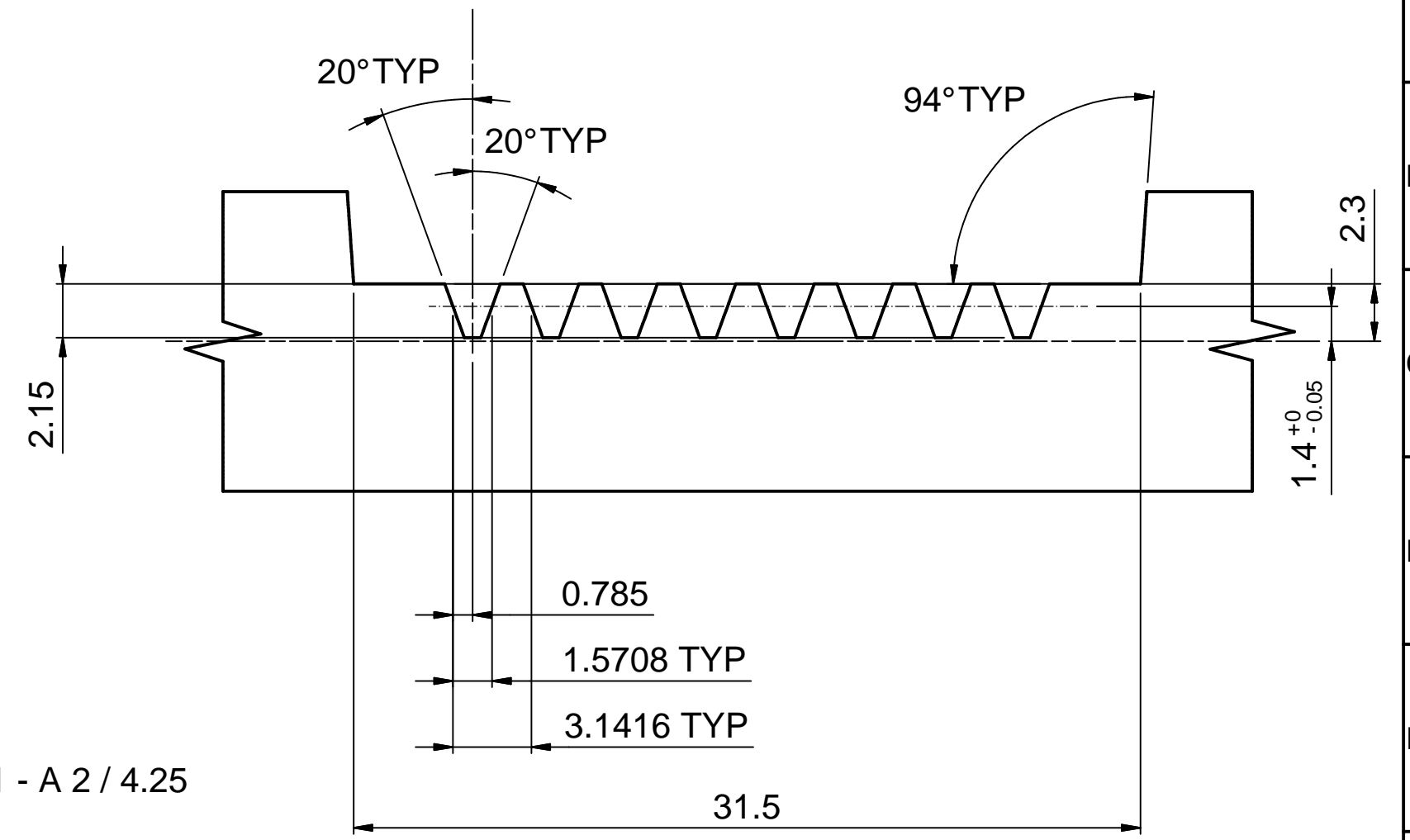
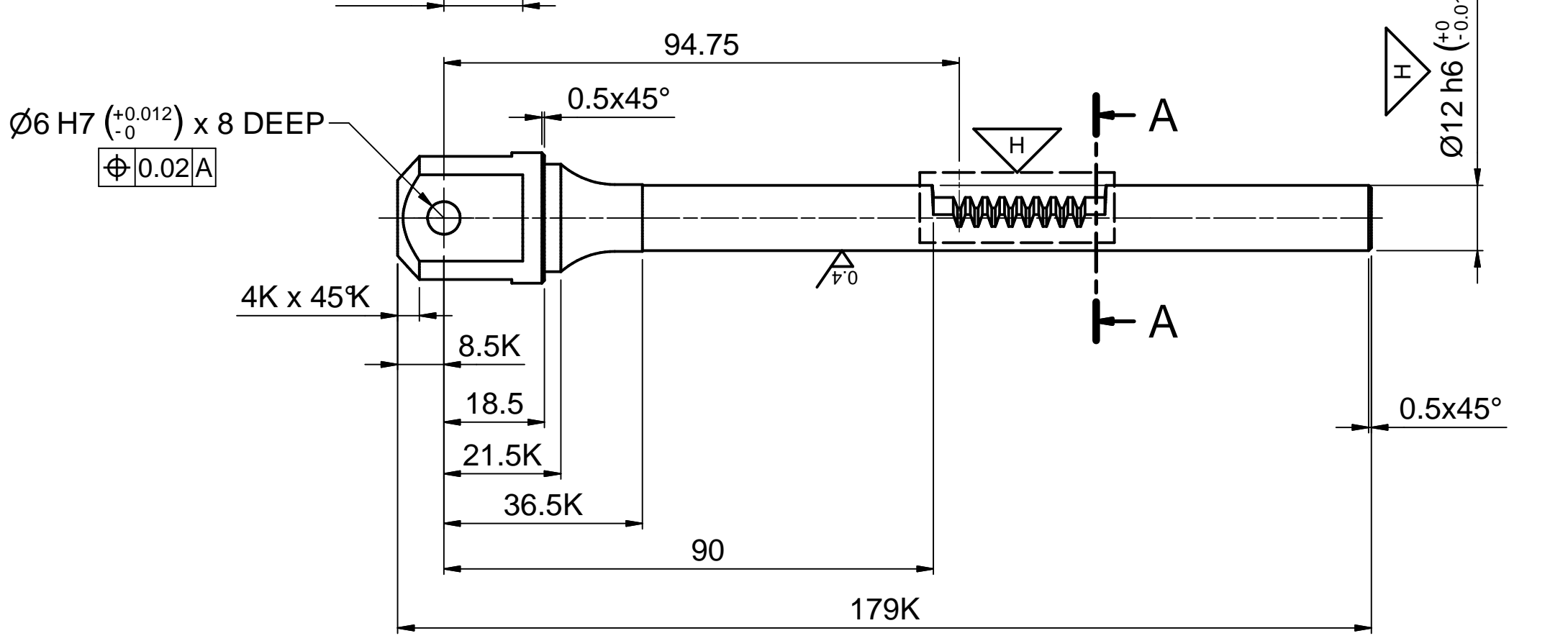
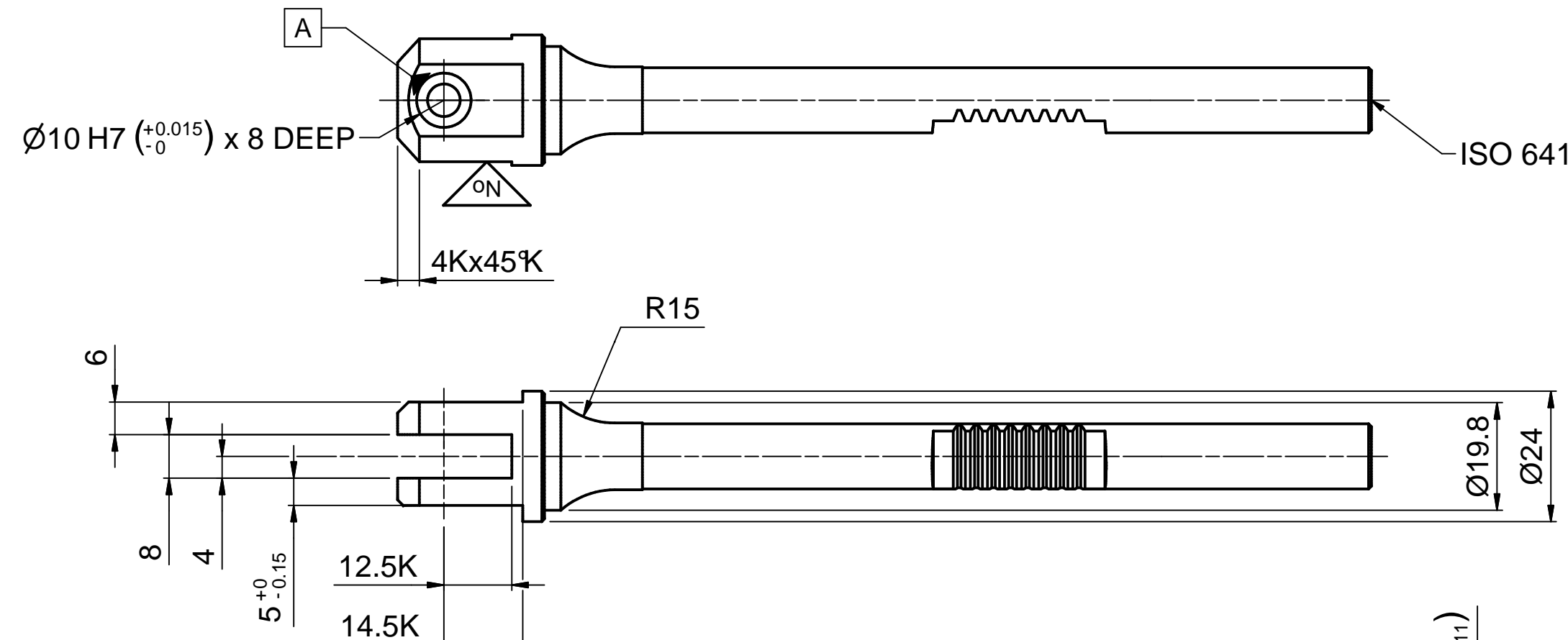
DEBURR

No

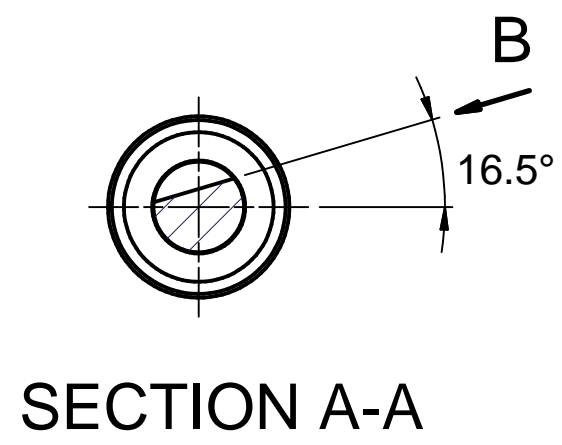
H 55 HRC

0.4

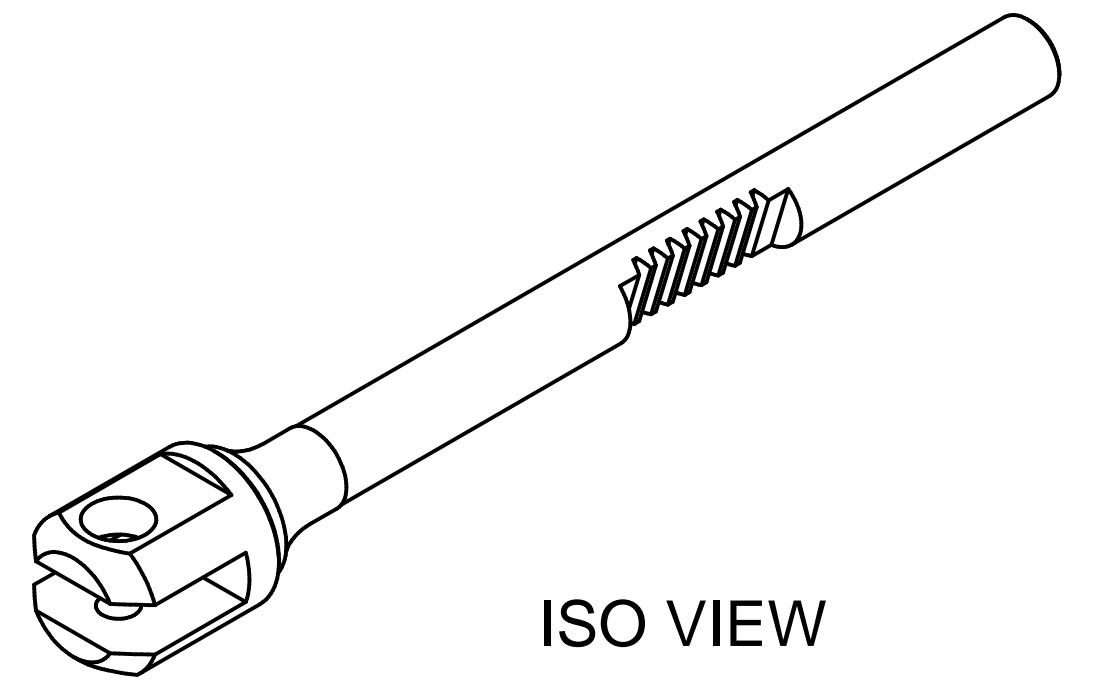
✓ ALL OVER



VIEW ON ARROW B
(SCALE 2:1)



SECTION A-A



ISO VIEW

MOLINS PART No. 71001.251			
This drawing is the property and copyright of Molins Tobacco Machinery and must not be passed on, copied or used for any other purpose without their written consent.			
Drawn: J. Novotný 22.1.2013 Design Check:		TITLE GEAR RACK	
AutoDesk Inventor® CAD		PART No. SHEET 1 OF 1	
SCALE 1:1	PROJECTION 	RENUMBERED FROM: 72000.636	DEV. No. 610FA121.3

10		
9		
8		
7		
6		
5		
4		
3		
2		
1		
REV	MOD No.	REMARKS

ORIG. M/C
6200 - OCTAVE M

MATL.
ST. STL.

UNLESS OTHERWISE STATED

ALL DIMENSIONS IN MILLIMETERS
SURFACE FINISH 1.6um. CAST IRON 3.2um
BREAK ALL SHARP EDGES R 0.15 TO 0.4
TOLERANCES :- DIMENSIONAL, OPEN ± 0.13, K ± 0.4
ANGULAR, OPEN ± 15', K ± 1'

MATL. No.	
AutoDesk Inventor® CAD	
SCALE 1:1	PROJECTION

RENUMBERED FROM: 72000.636	DEV. No.
-------------------------------	----------