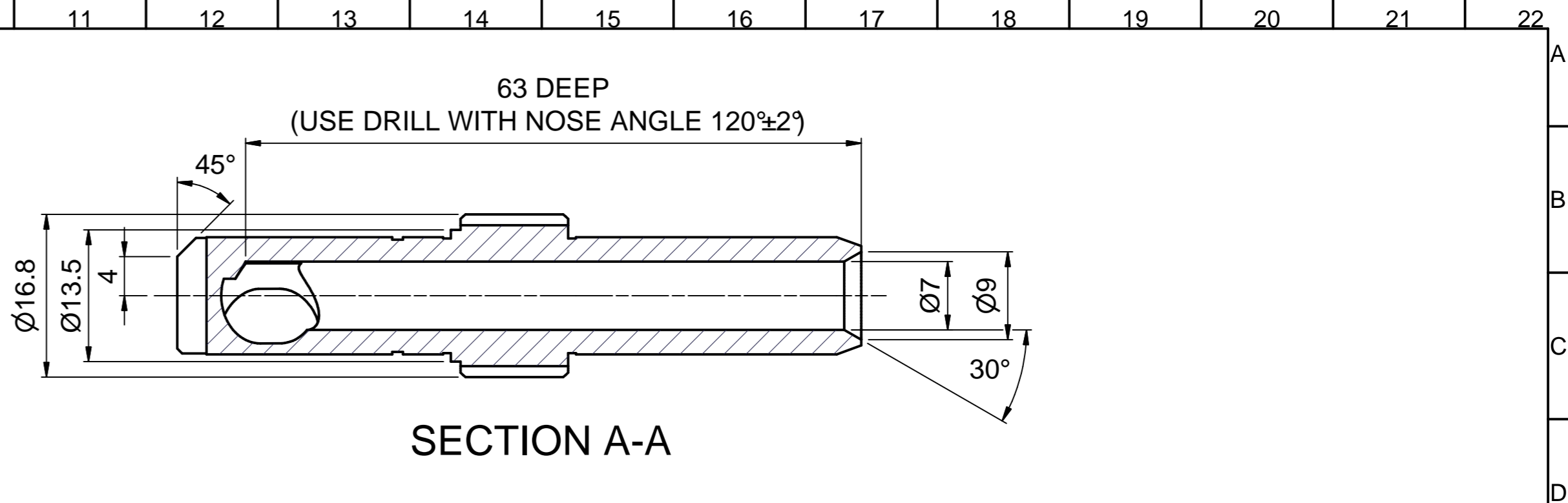


MANUFACTURE ACCORDING TO B.S. 436 PART 2			
CLASS OF GEAR	8	CONSTANT CORD HEIGHT	STD
NUMBER OF TEETH	13 (FULL CIRCLE)	CONSTANT CORD THICKNESS	STD
MODULE	1	HELIX ANGLE	N/A
PRESSURE ANGLE	20°	LEAD	N/A
PITCH CIRCLE DIAMETER	13	HAND	N/A
BASE CIRCLE DIAMETER	12.2160	BASE HELIX ANGLE	N/A
ADDENDUM	1.9	PART No. OF MATING GEAR	54206_417
DEDENDUM	0.35	RUNNING GEAR CENTRES	N/A
BACKLASH WHEN CHECKED WITH MASTER GEAR	STD	EXTENSION OF CENTRES	N/A



ANGULAR RELATIONSHIP BETWEEN TEETH AND OTHER FEATURES IMPORTANT

CORRECTED GEAR
x = 0.9

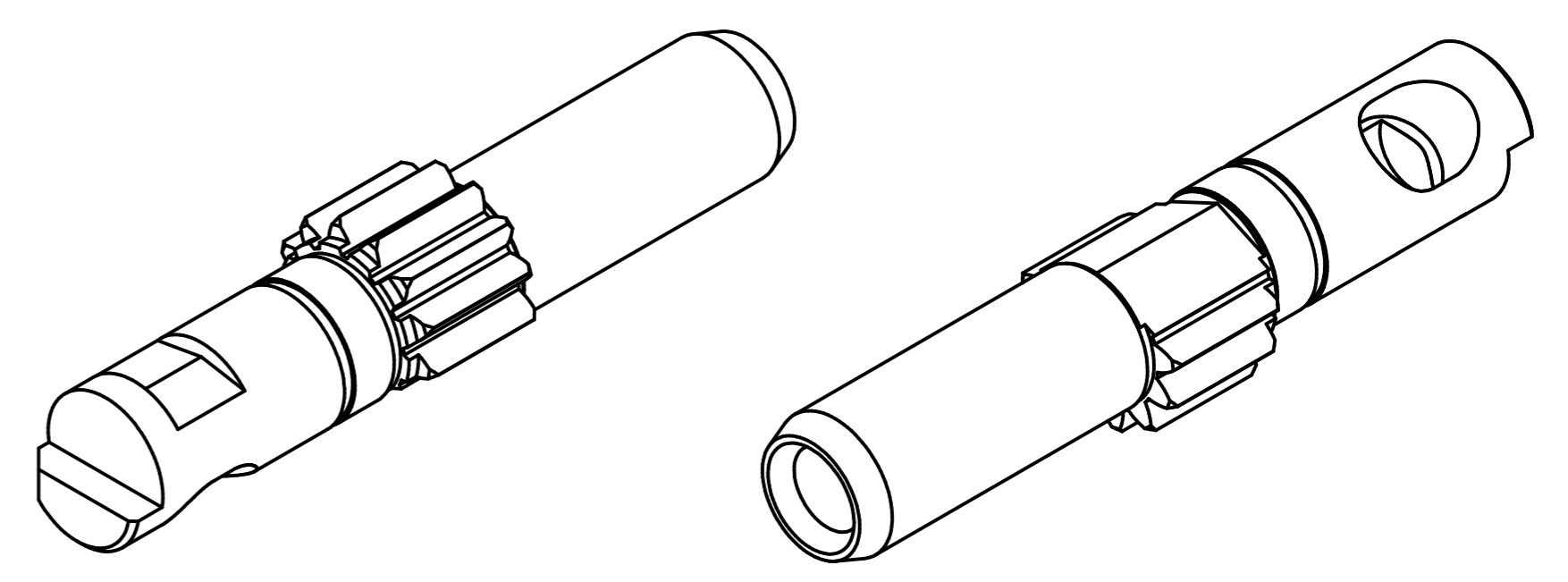
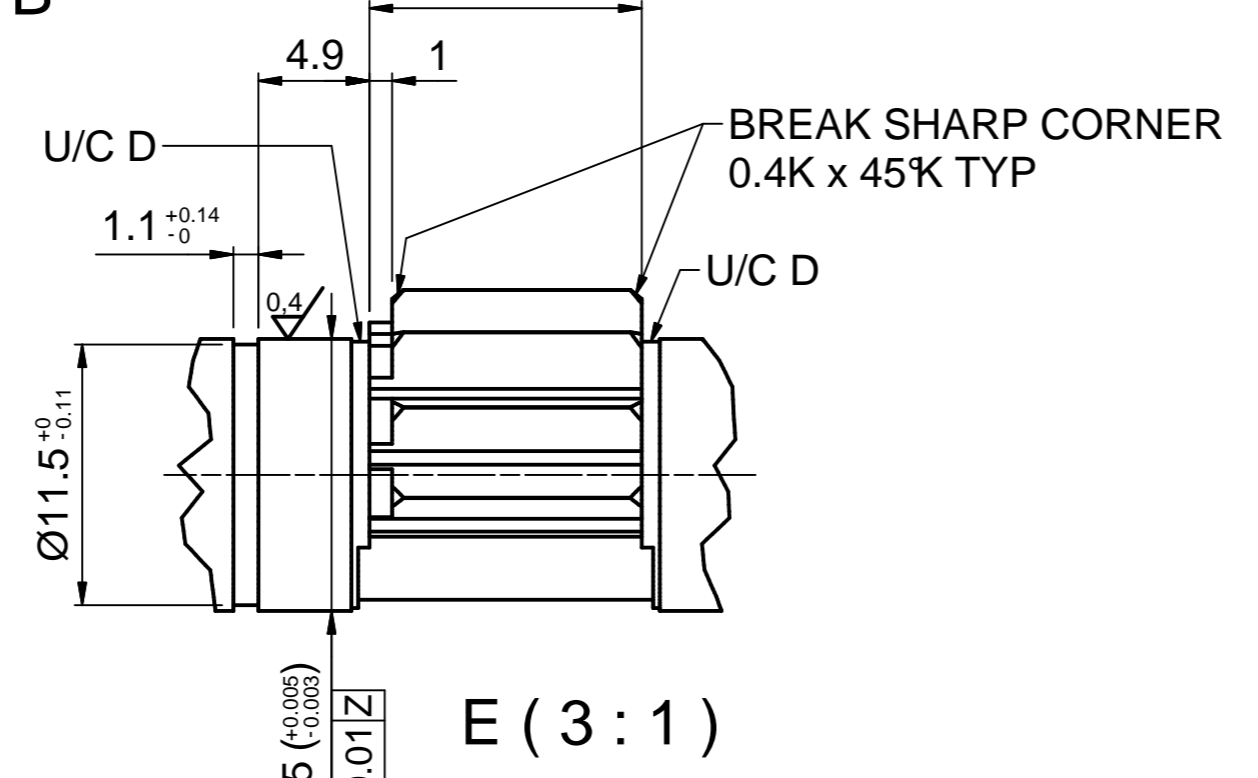
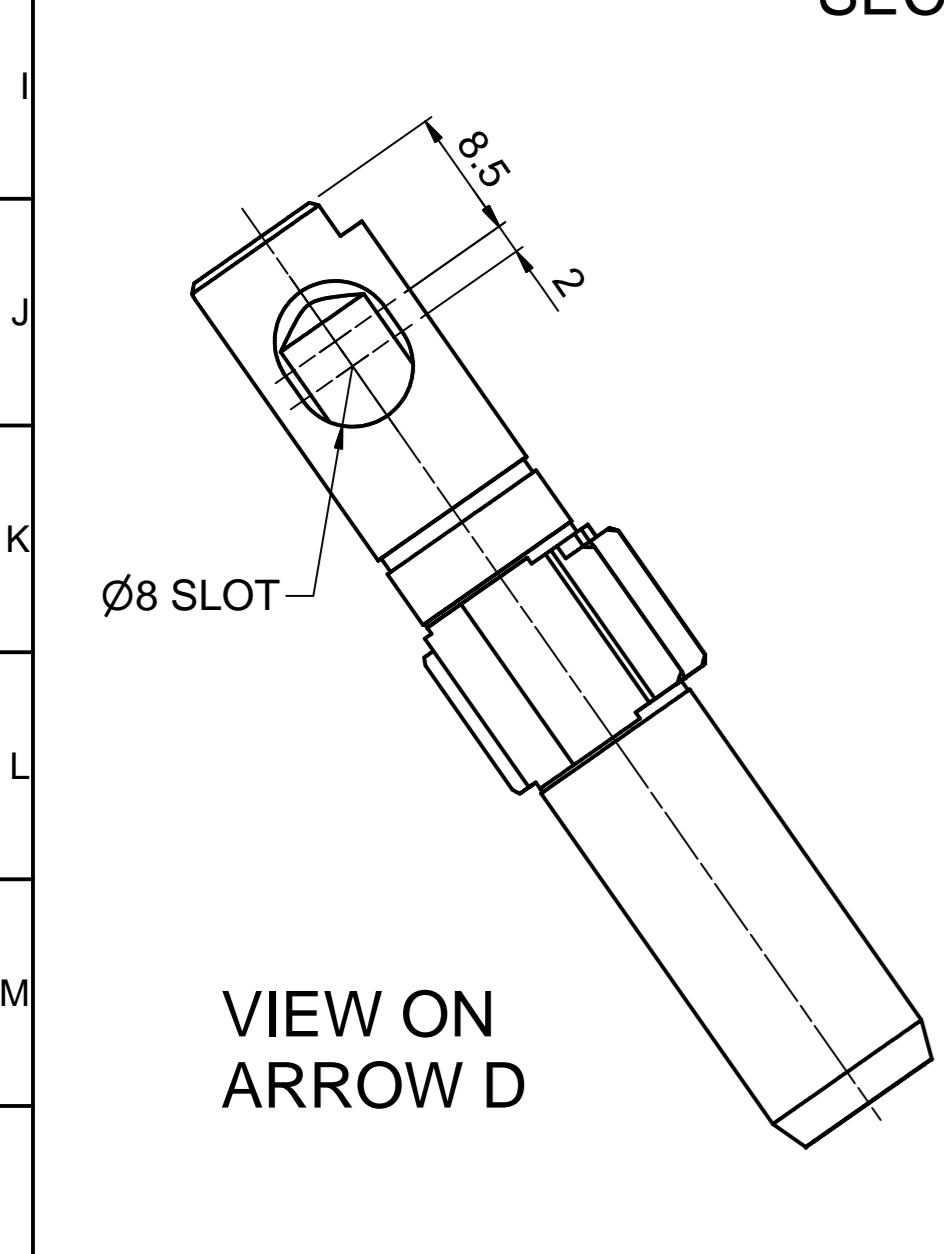
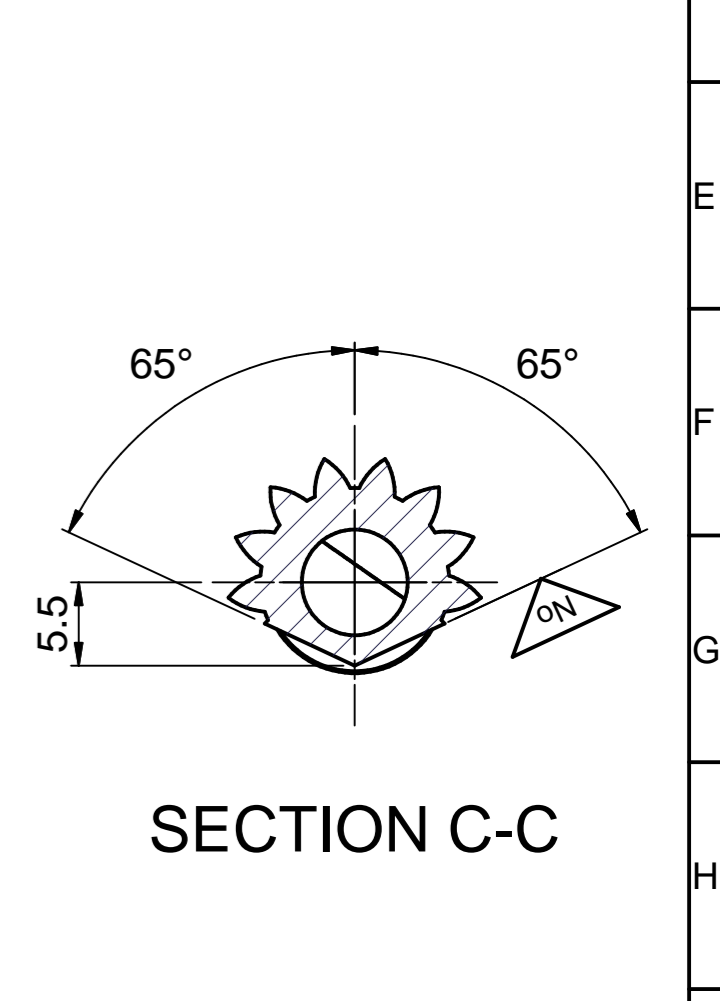
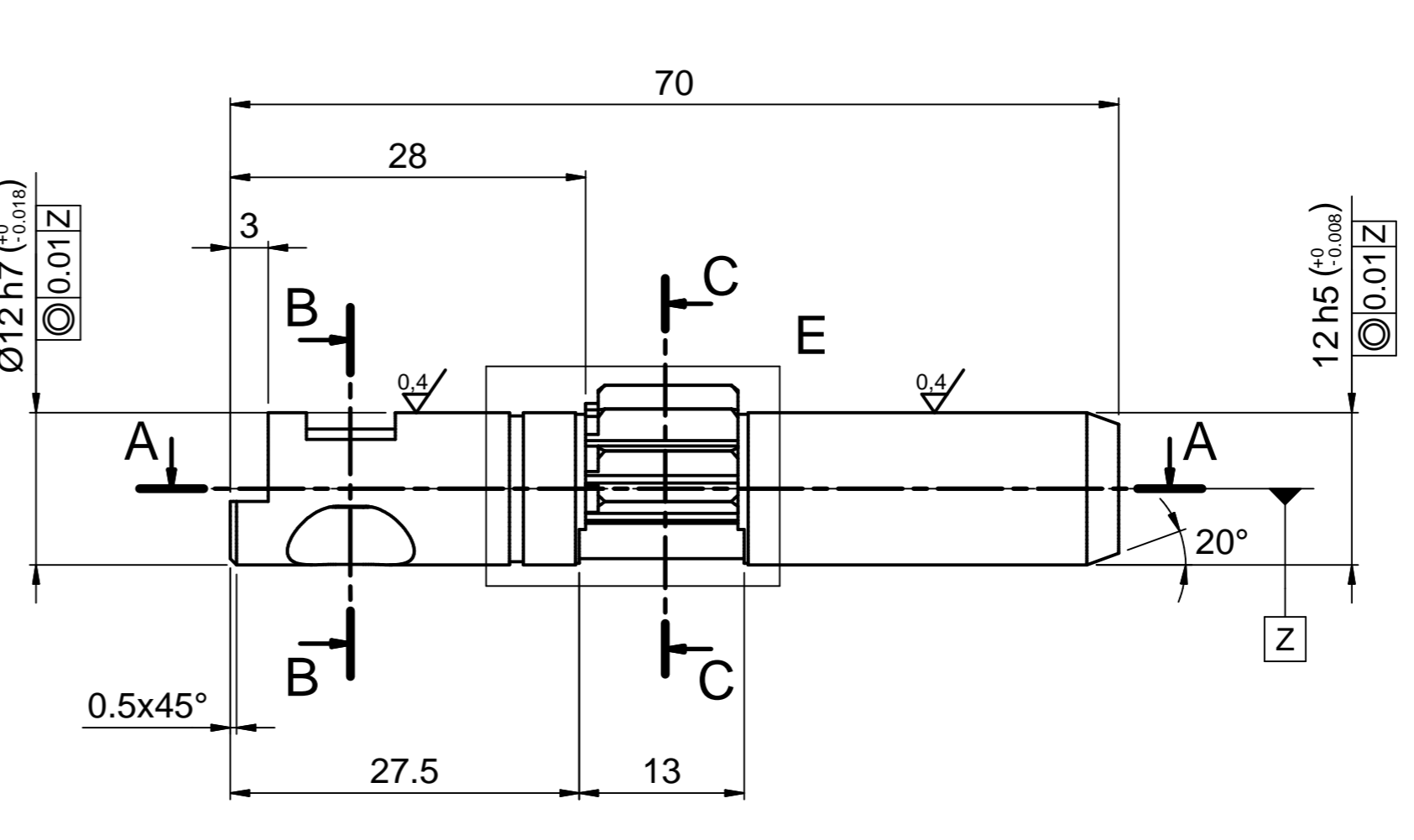
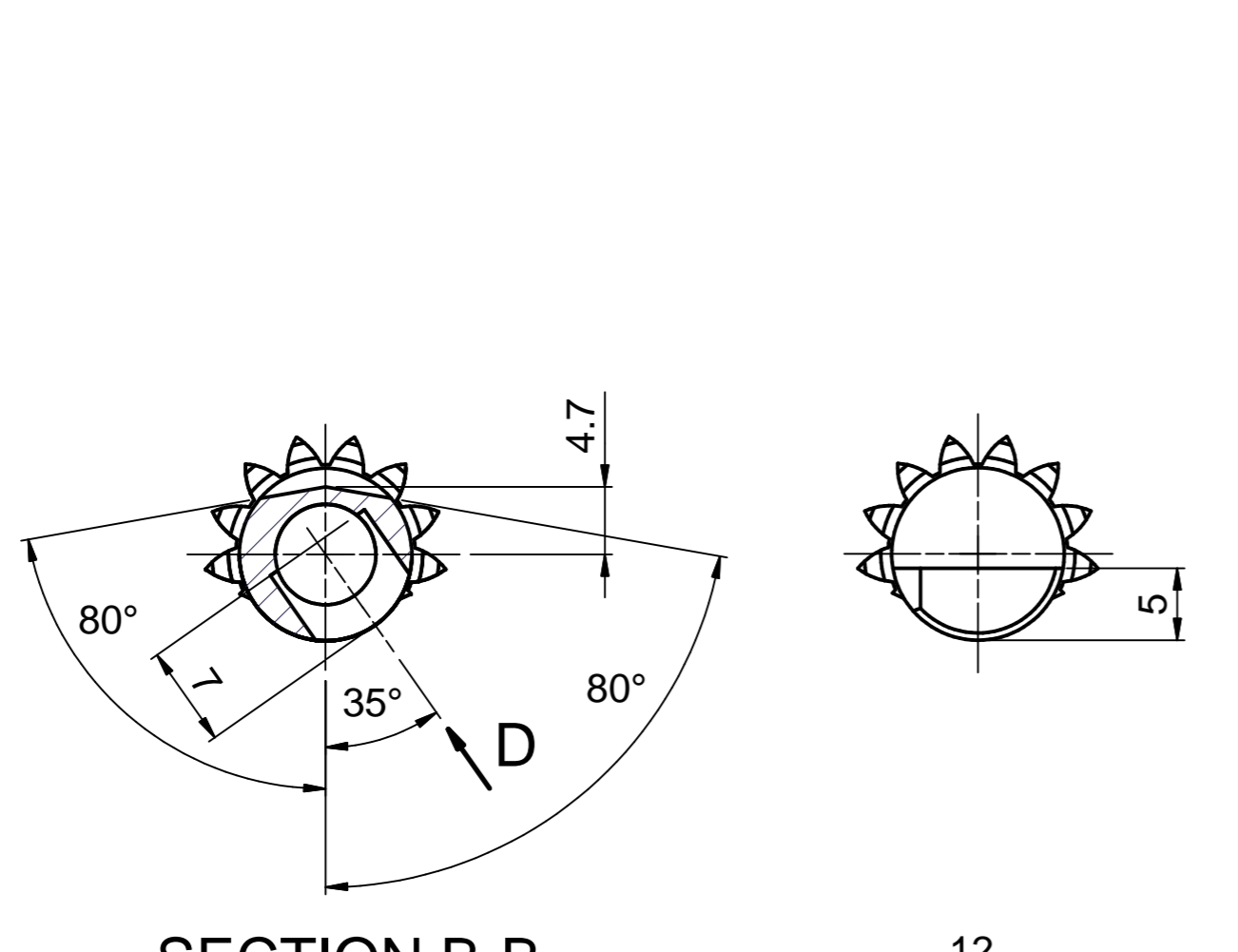
DEBURR

No

H ALL OVER

0.4

✓ ALL OVER



REV	MOD No.	REMARKS
10		
9		
8		
7		
6		
5		
4		
3		
2		
1		

ORIG. M/C 6200 - OCTAVE M

MATL. EN36A (C.H.Q.)

UNLESS OTHERWISE STATED

ALL DIMENSIONS IN MILLIMETERS

SURFACE FINISH 1.6um. CAST IRON 3.2um

BREAK ALL SHARP EDGES R 0.15 TO 0.4

TOLERANCES :- DIMENSIONAL, OPEN ± 0.13, K ± 0.4

ANGULAR, OPEN ± 15', K ± 1'

MATL. No.

AutoDesk Inventor® CAD

SCALE 2:1

PROJECTION

Drawn: J. Novotný 24.1.2013

Design Check:

Standards Check:

RENUMBERED FROM: 72000.638

DEV. No.

MOLINS PART No. 71001.252

MOLINS
TOBACCO MACHINERY

TITLE PINION SHAFT

PART No. 610FA123.3

SHEET 1 OF 1