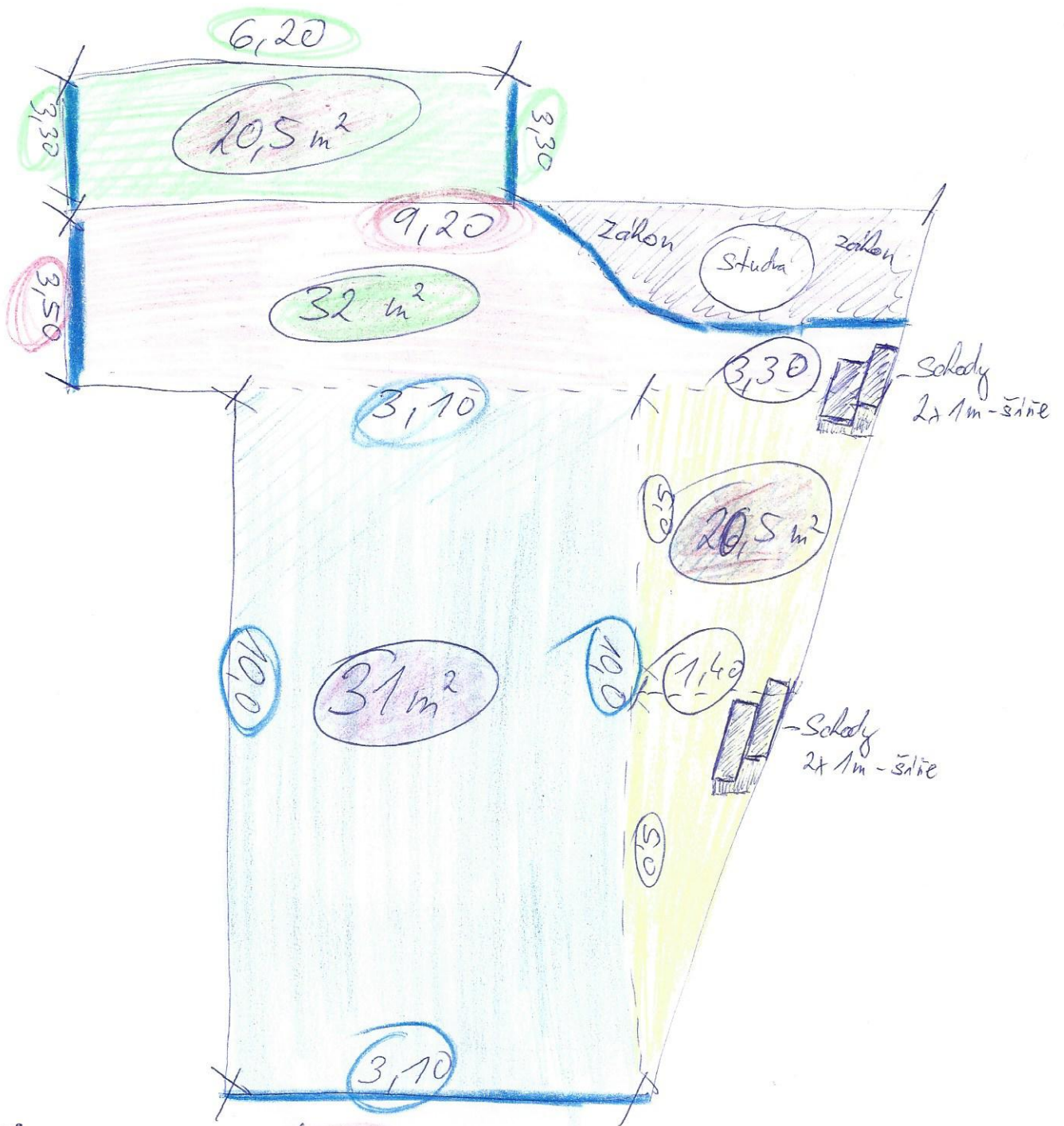


# Dlažba ve dvoře



Dlažba:  
 20,5 m<sup>2</sup>  
 20,5 m<sup>2</sup>  
 32,0 m<sup>2</sup>  
 31,0 m<sup>2</sup>

104 m<sup>2</sup>

Obrubník:

1m

3x

3x

3x

3x

4x

16 ks = 20 ks

0,5m

3x

2x

2x

7 ks = 10 ks