

4

3

2

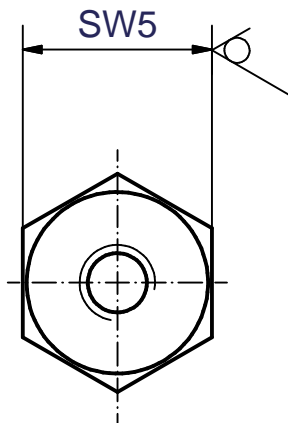
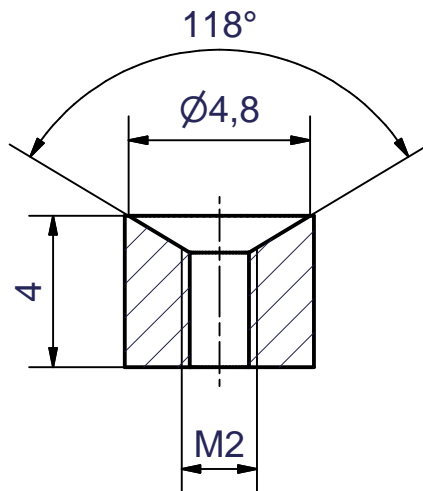
1

D

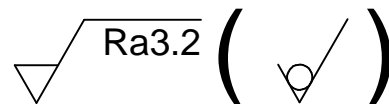
C

B

A



1:1



TOLERANCES FOR  
DIMENSIONS IN INCHES  
UNLESS OTHERWISE SPECIFIED:  
FRACTIONAL:  $\pm 1/32$   
ANGULAR:  $\pm 5$  DEG  
TWO PLACE DECIMAL:  $\pm .015$   
THREE PLACE DECIMAL:  $\pm .005$

ALLGEMEINTOLERANZEN GENERAL TOLERANCES ISO 2768-mH	OBERFLAECHEENZEICHEN SURFACE SYMBOLS ISO 1302	TOLERIERUNG TOLERANCING ISO 8015	WERKSTÜCKKANTEN EDGES ISO 13715	Einheiten / Units mm	Gewicht / weight ·
Werkstoff / Material CuZn39Pb3 - 2.0401		Rohmaterial / Raw material ·		Rohmaterial Nr./ Raw material-No. ·	
Werkstoff / Material (alternativ) ·		Rohmaterial / Raw material (alternativ) ·		Rohmaterial Nr./ Raw material-No. (alternativ) ·	
ZEICHNUNGS-NR. / DRAWING No. Z1289-3.4				Artikel - Nr. / Part No. 7903503	
BENENNUNG / TITLE Mutter / Nut Electronic Igniter Z 1289					
GEZ. DRAWN		TAG DATE	NAME NAME		
A		2010#014_Z_1289-3.4 SW5_Senkung_Länge	16.06.09	Volberg	
ZUST. REV.	ZONE ZONE	BESCHREIBUNG DESCRIPTION	Tag DATE	NAME NAME	
MASS-STAB: SCALE:		5:1		FORMAT: SIZE: A4	
ÄNDERUNG / REVISION				BLATT SHEET	
				1 VON 1 OF 1	