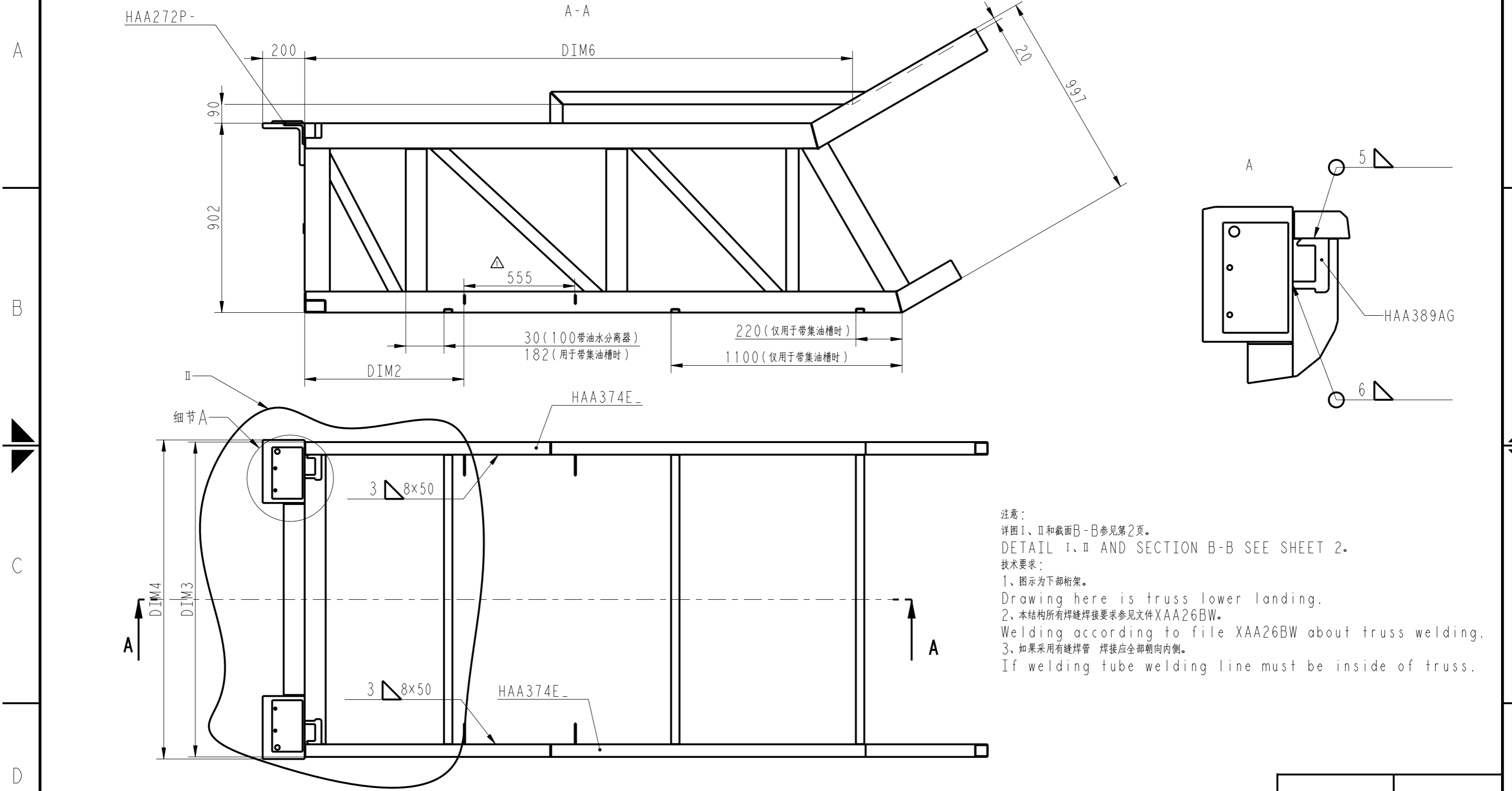


1	ISO 2768-1 中性值 ISO 2768-1 MEDIUM	2	3	4
A3	FIRST ANGLE 第一视角	LENGTH/DIAMETER 长度/直径	RADIUS/CHAMFER 圆角/倒角	ANGLE (shorter side length) 角度(短边长度)
	TOLERANCE 公差	TOLERANCE 公差	TOLERANCE 公差	TOLERANCE 公差
	0.5-6	0.5-3	0-10	±1°
	>6-30	>3-6	>10-50	±0.5°
	>30-120	>6	>50-120	±0.3°
	>120-400		>120-400	±0.15°
	>400-1000		>400	±0.1°
	>1000-2000			
	>2000-4000			

z = LEG LENGTH
ANSI/AWS A5.1-21 98-29 8
WELDING SYMBOLS ARE
USED ON THIS DRAWING.
z = 焊脚尺寸
此图中焊接符号按照 ANSI/AWS A5.1-21 98-29 8

WELDS 焊接



注意：
 详图 I、II 和截面 B-B 参见第 2 页。
 DETAIL I, II AND SECTION B-B SEE SHEET 2.
 技术要求：
 1、图示为下部桁架。
 Drawing here is truss lower landing.
 2、本结构所有焊缝焊接要求参见文件 XAA26BW。
 Welding according to file XAA26BW about truss welding.
 3、如果采用有缝焊管 焊接应全部朝向内侧。
 If welding tube welding line must be inside of truss.

由中国区提供 图框版本: 2016-04-26
FROM CHINA AREA Rev. 2016-04-26

Changes		Auth. 授权号	Engineer 工程师
日期 (DATE)	Change Description 变更内容描述		
2015-12-29	尺寸更改, 版面整理, 第 2, 3, 6 页有更改	CAT21767	潘鑫

WARNING 声明
 THIS WORK AND THE INFORMATION IT CONTAINS ARE THE PROPERTY OF OTIS ELEVATOR COMPANY ("OTIS"). IT IS DELIVERED TO OTHERS ON THE EXPRESS CONDITION THAT IT WILL BE USED ONLY FOR, OR ON BEHALF OF, OTIS; THAT NEITHER IT NOR THE INFORMATION IT CONTAINS WILL BE REPRODUCED OR DISCLOSED, IN WHOLE OR IN PART, WITHOUT THE PRIOR WRITTEN CONSENT OF OTIS; AND THAT ON DEMAND IT AND ANY COPIES WILL BE PROMPTLY RETURNED TO OTIS.
 UNPUBLISHED WORK © OTIS ELEVATOR COMPANY
 内部资料 © 奥的斯电梯公司版权所有



下头部桁架焊接图
The truss welding head figure

MATERIAL 材料:

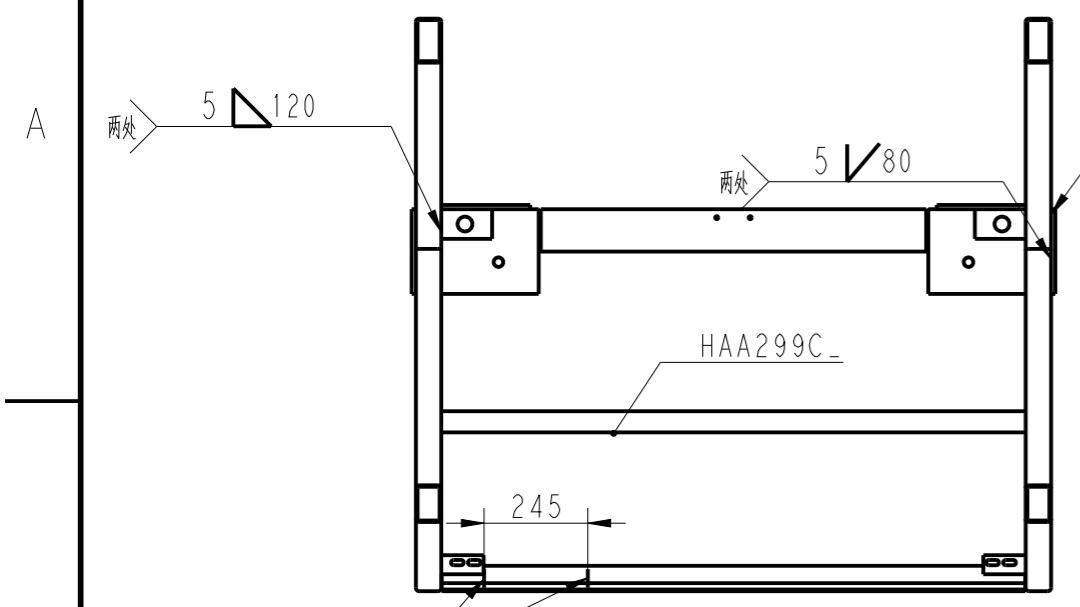
SPEC 规格:

FINISH 表面:

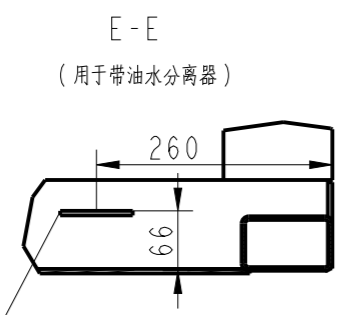
DWG 图号		HE0102A	
奥的斯杭州研发中心 OTIS ENGINEERING HANGZHOU			
DRAWN 制图	潘鑫	ORIGINAL DATE 日期	2016-04-30
CHK 校核	高慧玲		
STANDARD 标准	朱红波		
APPD 批准	李俊	共 6 页 SHEETS	
AUTH 授权	CAT20449	SHEET 第 1 页	

1	ISO 2768-1 中性值 ISO 2768-1 MEDIUM	2	3	4
A3	FIRST ANGLE 第一视角	LENGTH/DIAMETER 长度/直径	RADIUS/CHAMFER 圆角/倒角	ANGLE (shorter side length) 角度(短边长度)
	TOLERANCE 公差	TOLERANCE 公差	TOLERANCE 公差	TOLERANCE 公差
	0.5-6	0.5-3	0-10	±1°
	>6-30	>3-6	>10-50	±0.5°
	>30-120	>6	>50-120	±0.3°
	>120-400		>120-400	±0.15°
	>400-1000		>400	±0.1°
	>1000-2000			
	>2000-4000			

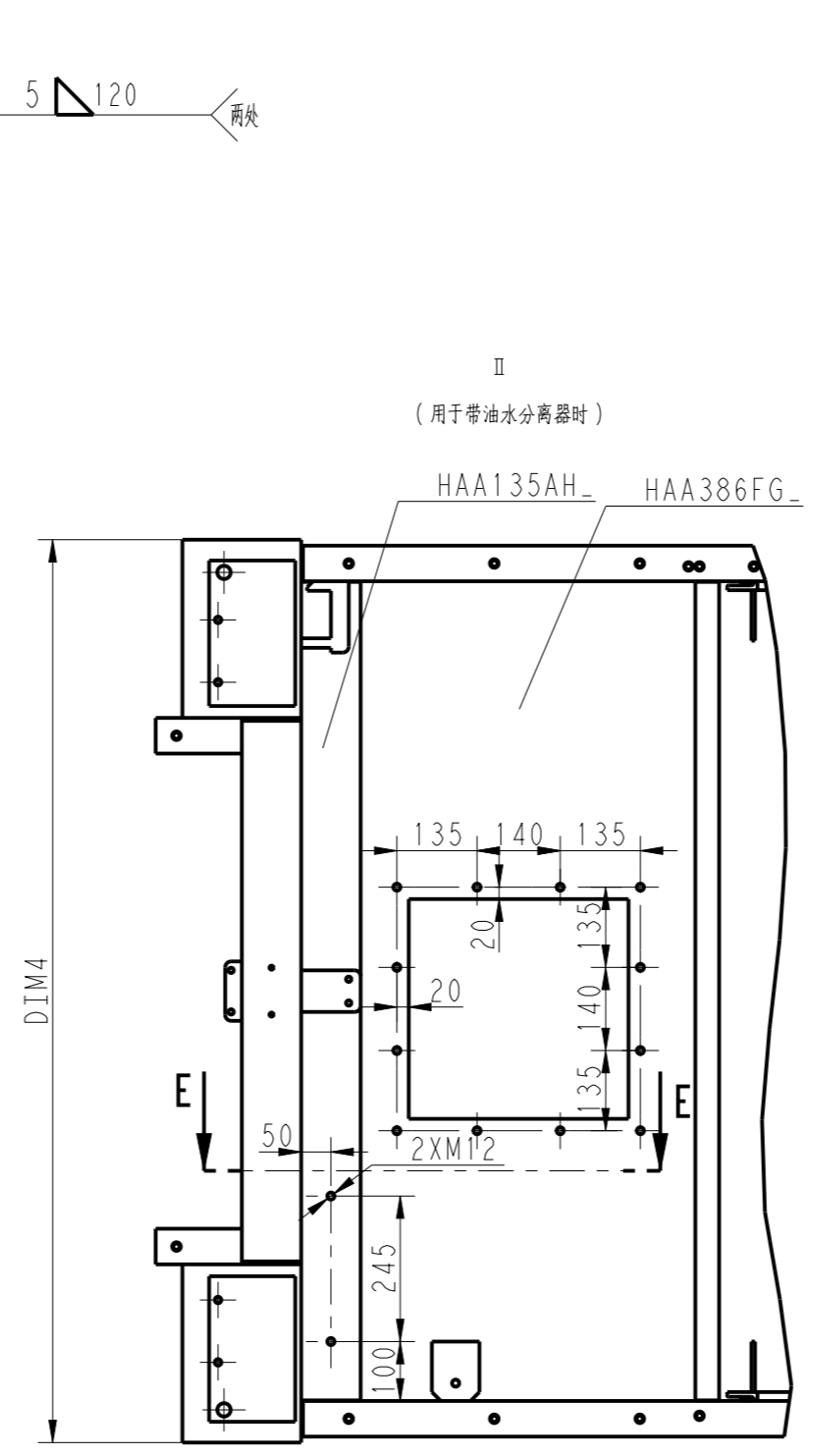
z = LEG LENGTH
ANSI/ASME 31.21-98-29.8
WELDING SYMBOLS ARE
USED ON THIS DRAWING.
z = 焊脚尺寸
此图中焊接符号按照 ANSI/ASME 31.21-98-29.8



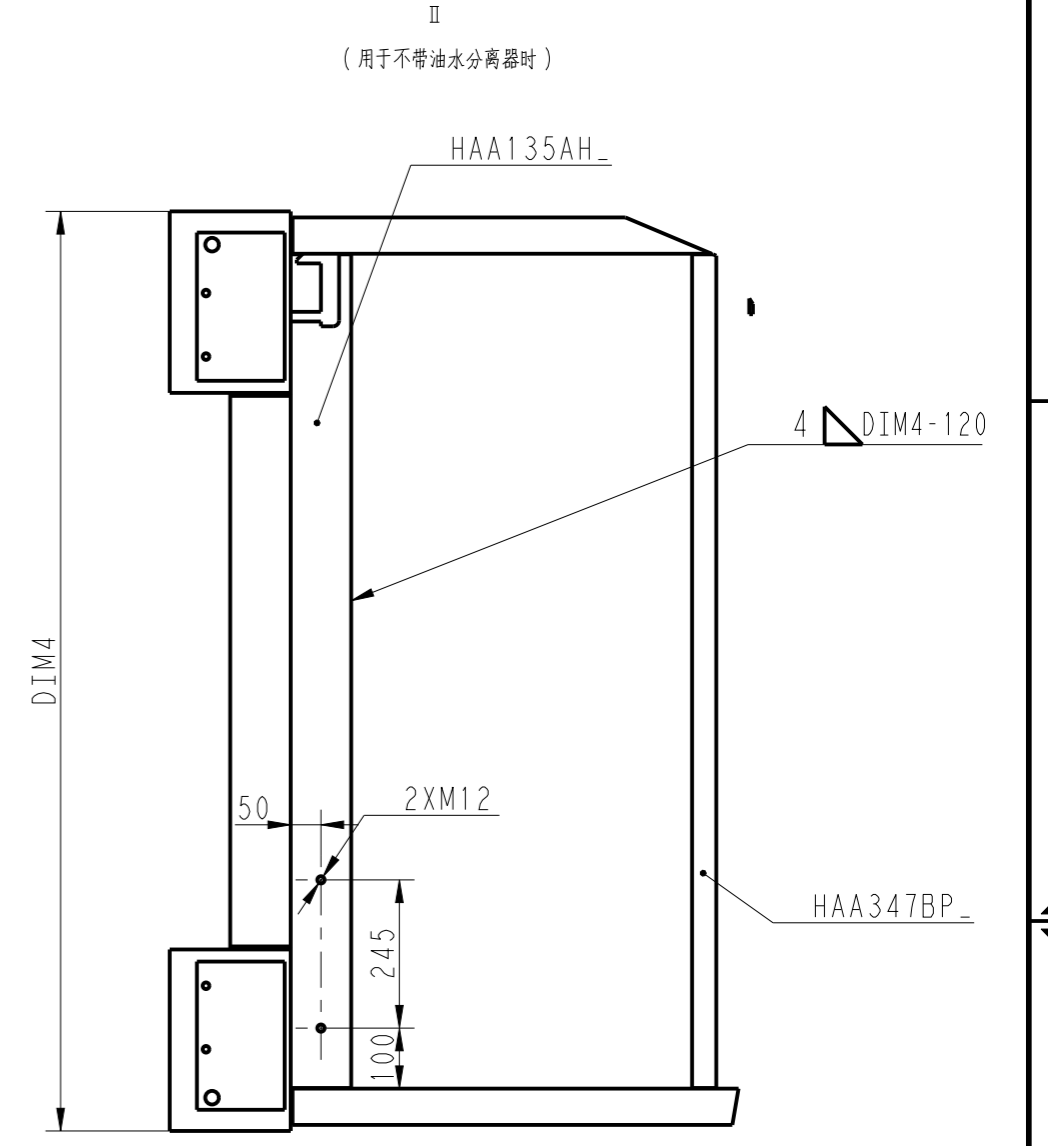
方管居中配打M12螺纹孔
(端部横梁上用于安装水平杆配打螺纹孔)
(若扶梯为变频且TRUSEXL ≤ 100mm时 该孔对称配打于桁架左侧)



E-E
(用于带油水分离器)



II
(用于带油水分离器时)



II
(用于不带油水分离器时)

由中国提供 图样版本: 2016-04-26
FROM CHINA AREA Rev. 2016-04-26

Changes			
日期 (DATE)	Change Description 变更内容描述	Auth. 授权号	Engineer 工程师
2015-12-29	图面整理	CAT21767	潘鑫

WARNING 声明
THIS WORK AND THE INFORMATION IT CONTAINS ARE THE PROPERTY OF OTIS ELEVATOR COMPANY ("OTIS"). IT IS DELIVERED TO OTHERS ON THE EXPRESS CONDITION THAT IT WILL BE USED ONLY FOR, OR ON BEHALF OF, OTIS; THAT NEITHER IT NOR THE INFORMATION IT CONTAINS WILL BE REPRODUCED OR DISCLOSED, IN WHOLE OR IN PART, WITHOUT THE PRIOR WRITTEN CONSENT OF OTIS; AND THAT ON DEMAND IT AND ANY COPIES WILL BE PROMPTLY RETURNED TO OTIS.
UNPUBLISHED WORK © OTIS ELEVATOR COMPANY
内部资料 © 奥的斯电梯公司版权所有



下头部桁架焊接图
The truss welding head figure

MATERIAL 材料: _____

SPEC 规格: _____

FINISH 表面: _____

DWG 图号		HE0102A	
奥的斯杭州研发中心 OTIS ENGINEERING HANGZHOU			
DRAWN 制图	潘鑫	ORIGINAL DATE 日期	2016-04-30
CHK 校核	高慧玲		
STANDARD 标准	朱红波		
APPD 批准	李俊	共 页 SHEETS	
AUTH 授权	CAT20449	SHEET 第 2 页	

ALL DIMENSIONS METRIC 所有尺寸采用公制

ACCORDING WITH OTIS DOCUMENT 52847 & DRAWING MANUAL ENG_H.S002
依据 OTIS 52847 和 ENG_H.S002 制图规范起草

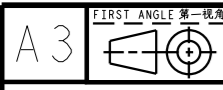
1

ISO 2768-1 中性值
ISO 2768-1 MEDIUM

2

3

4



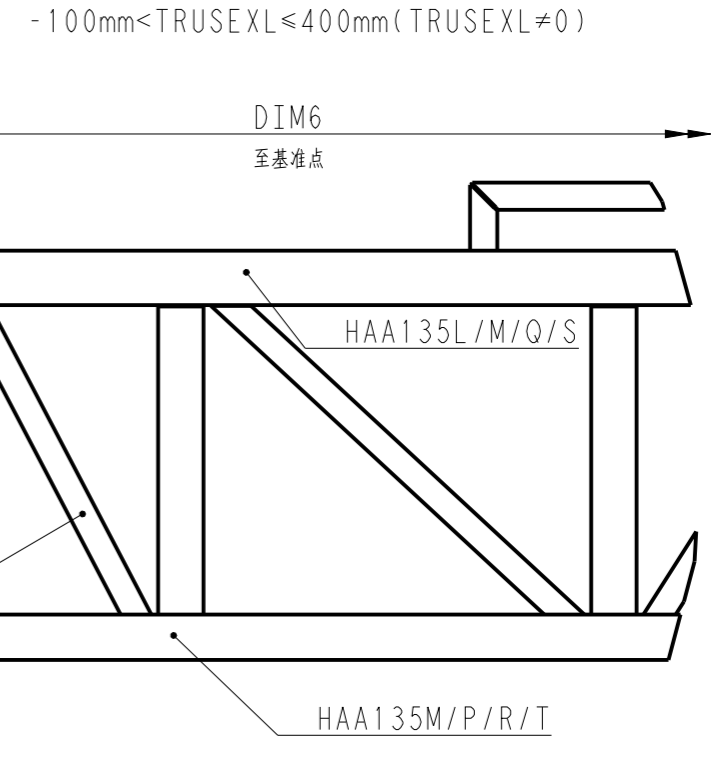
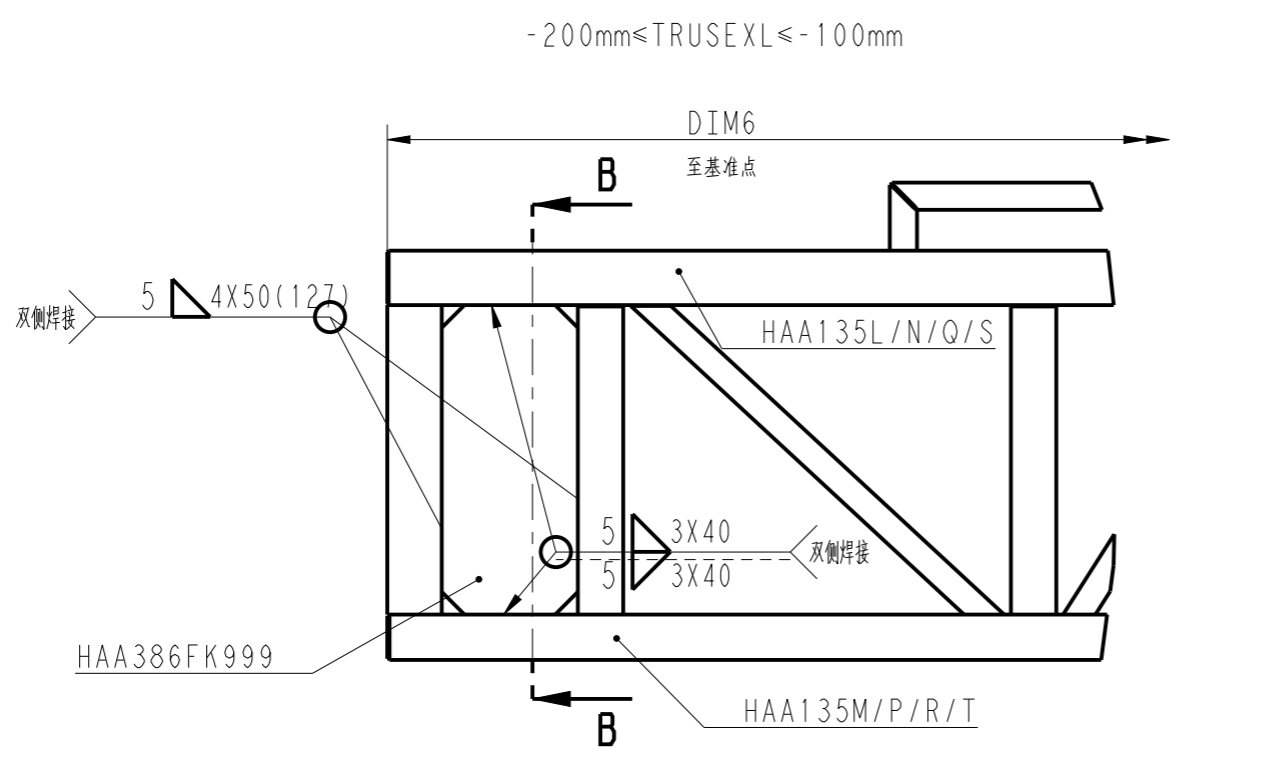
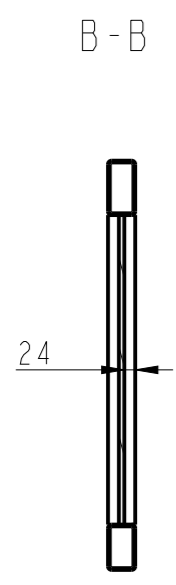
LENGTH/DIAMETER 长度/直径	0.5-6	>6-30	>30-120	>120-400	>400-1000	>1000-2000	>2000-4000
TOLERANCE 公差	±0.1	±0.2	±0.3	±0.5	±0.8	±1.2	±2

RADIUS/CHAMFER 圆角/倒角	0.5-3	>3-6	>6
TOLERANCE 公差	±0.2	±0.5	±1

ANGLE (shorter side length) 角度(短边长度)	0-10	>10-50	>50-120	>120-400	>400
TOLERANCE 公差	±1°	±0.5°	±0.3°	±0.15°	±0.1°

z = LEG LENGTH ANSI/ASME 31.21-98-29.8 WELDING SYMBOLS ARE USED ON THIS DRAWING. z = 焊脚尺寸 此图中焊接符号按照 ANSI/ASME 31.21-98-29.8	
--	--

A

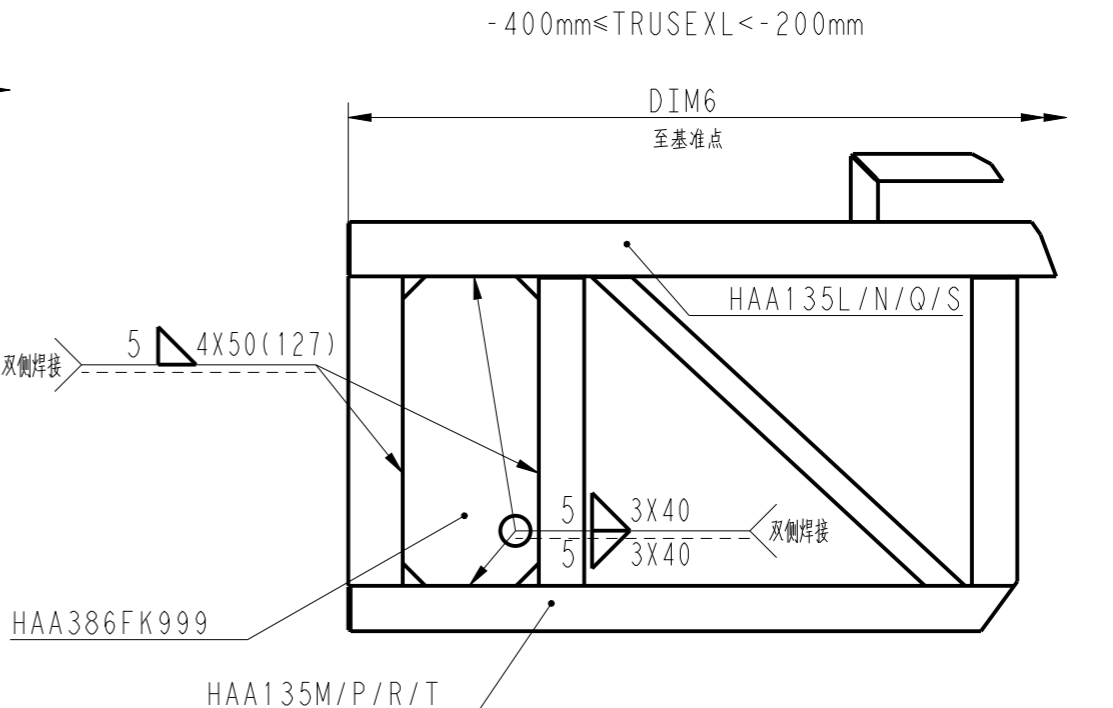
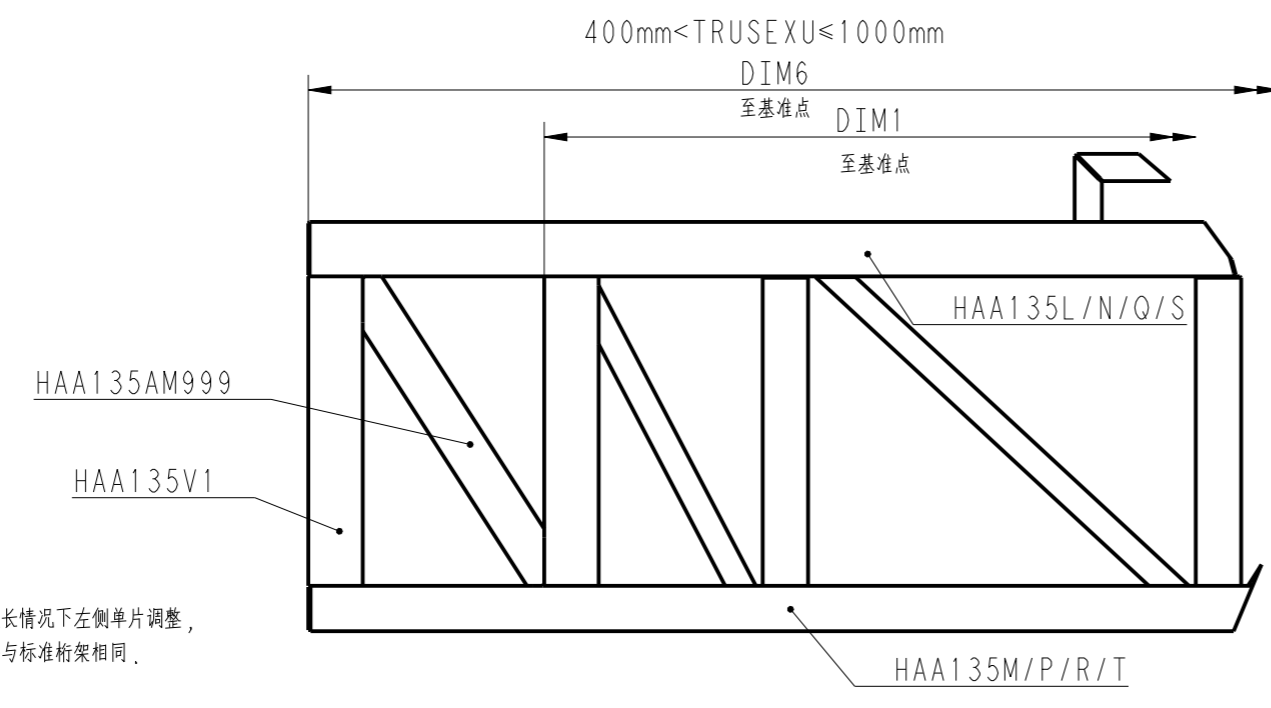


B

B

C

C



- 注:
1. 本页视图仅使用于上部桁架延长情况下左侧单片调整, 右侧单片与之对称, 其他部分与标准桁架相同.
 2. 参数请参见HE0102A;
 3. 零件连接处都需要焊接, 未标注焊接符号参见XAA26BW.

由中国提供 图号版本: 2016-04-26
FROM CHINA AREA Rev. 2016-04-26

Changes			
日期 (DATE)	Change Description 更改内容描述	Auth. 授权号	Engineer 工程师
2015-12-29	版面整理	CAT21767	潘鑫

WARNING 声明
THIS WORK AND THE INFORMATION IT CONTAINS ARE THE PROPERTY OF OTIS ELEVATOR COMPANY ("OTIS"). IT IS DELIVERED TO OTHERS ON THE EXPRESS CONDITION THAT IT WILL BE USED ONLY FOR, OR ON BEHALF OF, OTIS; THAT NEITHER IT NOR THE INFORMATION IT CONTAINS WILL BE REPRODUCED OR DISCLOSED, IN WHOLE OR IN PART, WITHOUT THE PRIOR WRITTEN CONSENT OF OTIS; AND THAT ON DEMAND IT AND ANY COPIES WILL BE PROMPTLY RETURNED TO OTIS.
UNPUBLISHED WORK © OTIS ELEVATOR COMPANY
内部资料 © 奥的斯电梯公司版权所有



桁架延伸 (下头部)
Truss extension (under section)

MATERIAL 材料: _____

SPEC 规格: _____

FINISH 表面: _____

DWG 图号	HE0102A	
奥的斯杭州研发中心 OTIS ENGINEERING HANGZHOU		
DRAWN 制图	潘鑫	ORIGINAL DATE 日期
CHK 校核	高慧玲	2016-04-30
STANDARD 标准	朱红波	共 页 SHEETS
APPD 批准	李俊	SHEET 第 3 页
AUTH 授权	CAT20449	

1

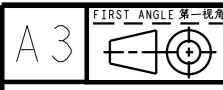
ALL DIMENSIONS METRIC 所有尺寸采用公制

2

3

4

ACCORDING WITH OTIS DOCUMENT 52847 & DRAWING MANUAL ENG_H.S002
依据 OTIS 52847 和 ENG_H.S002 制图规范起草

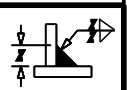


LENGTH/DIAMETER 长度/直径	0.5-6	>6-30	>30-120	>120-400	>400-1000	>1000-2000	>2000-4000
TOLERANCE 公差	±0.1	±0.2	±0.3	±0.5	±0.8	±1.2	±2

RADIUS/CHAMFER 圆角/倒角	0.5-3	>3-6	>6
TOLERANCE 公差	±0.2	±0.5	±1

ANGLE (shorter side length) 角度 (短边长度)	0-10	>10-50	>50-120	>120-400	>400
TOLERANCE 公差	±1°	±0.5°	±0.3°	±0.15°	±0.1°

z = LEG LENGTH
ANSI/AWS 3.21.98-29.8
WELDING SYMBOLS ARE
USED ON THIS DRAWING.
z = 焊脚尺寸
此图中焊接符号按照 ANSI/AWS 3.21.98-29.8



A

B

C

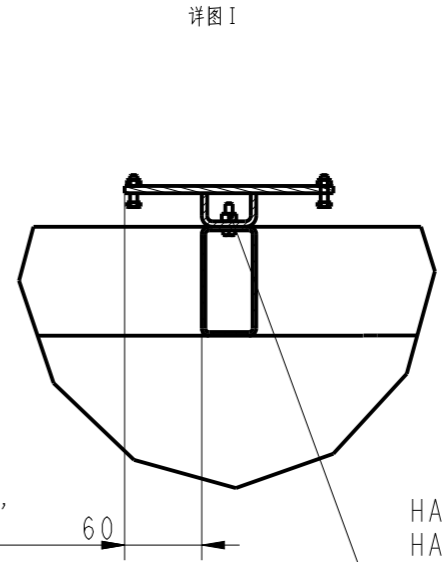
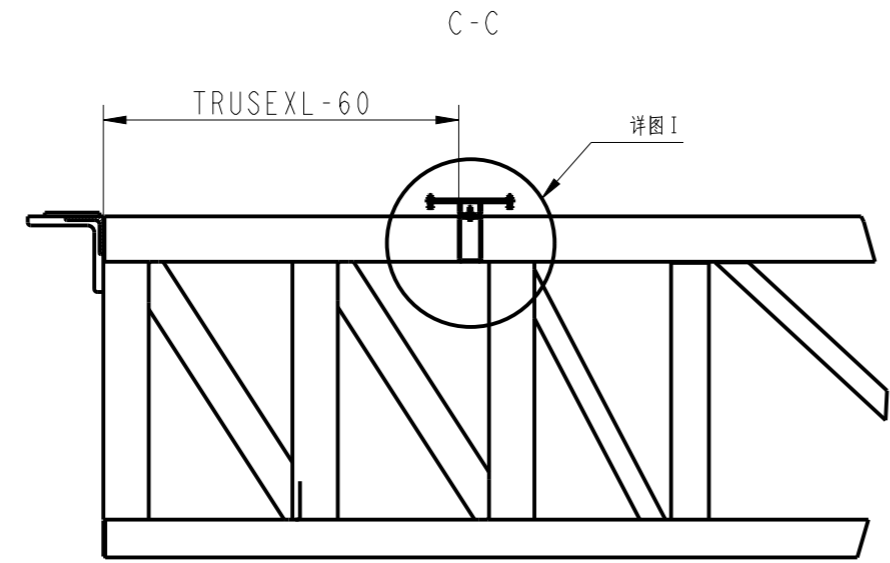
D

A

B

C

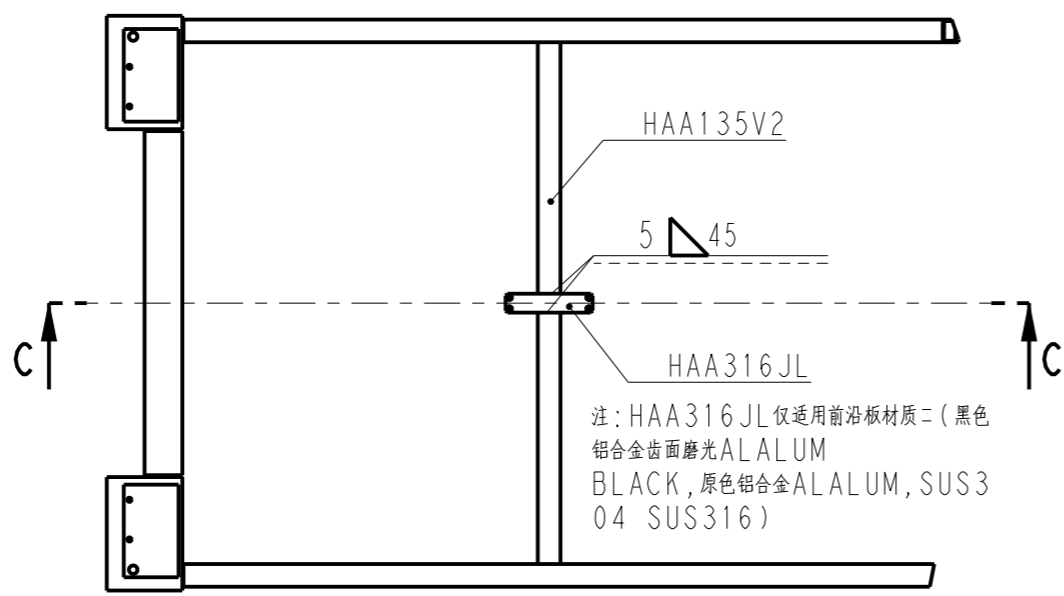
D



上头部该尺寸靠近大角钢,
下头部该尺寸靠近拐点.

HAA65L2
HAA131A3
ISO4017M8x30
ISO4032M8

下部桁架
(仅用于TRUSEXL ≥ 500mm时)



注: HAA316JL 仅适用前盖板材质 = (黑色
铝合金齿面磨光ALALUM
BLACK, 原色铝合金ALALUM, SUS3
04 SUS316)

Changes

WARNING 声明
THIS WORK AND THE INFORMATION IT CONTAINS ARE THE PROPERTY OF OTIS ELEVATOR COMPANY ("OTIS"). IT IS DELIVERED TO OTHERS ON THE EXPRESS CONDITION THAT IT WILL BE USED ONLY FOR, OR ON BEHALF OF, OTIS; THAT NEITHER IT NOR THE INFORMATION IT CONTAINS WILL BE REPRODUCED OR DISCLOSED, IN WHOLE OR IN PART, WITHOUT THE PRIOR WRITTEN CONSENT OF OTIS; AND THAT ON DEMAND IT AND ANY COPIES WILL BE PROMPTLY RETURNED TO OTIS.
UNPUBLISHED WORK © OTIS ELEVATOR COMPANY
内部资料 © 奥的斯电梯公司版权所有



整体桁架延伸
The overall truss stretching

DWG 图号 **HE0102A**

奥的斯杭州研发中心
OTIS ENGINEERING HANGZHOU

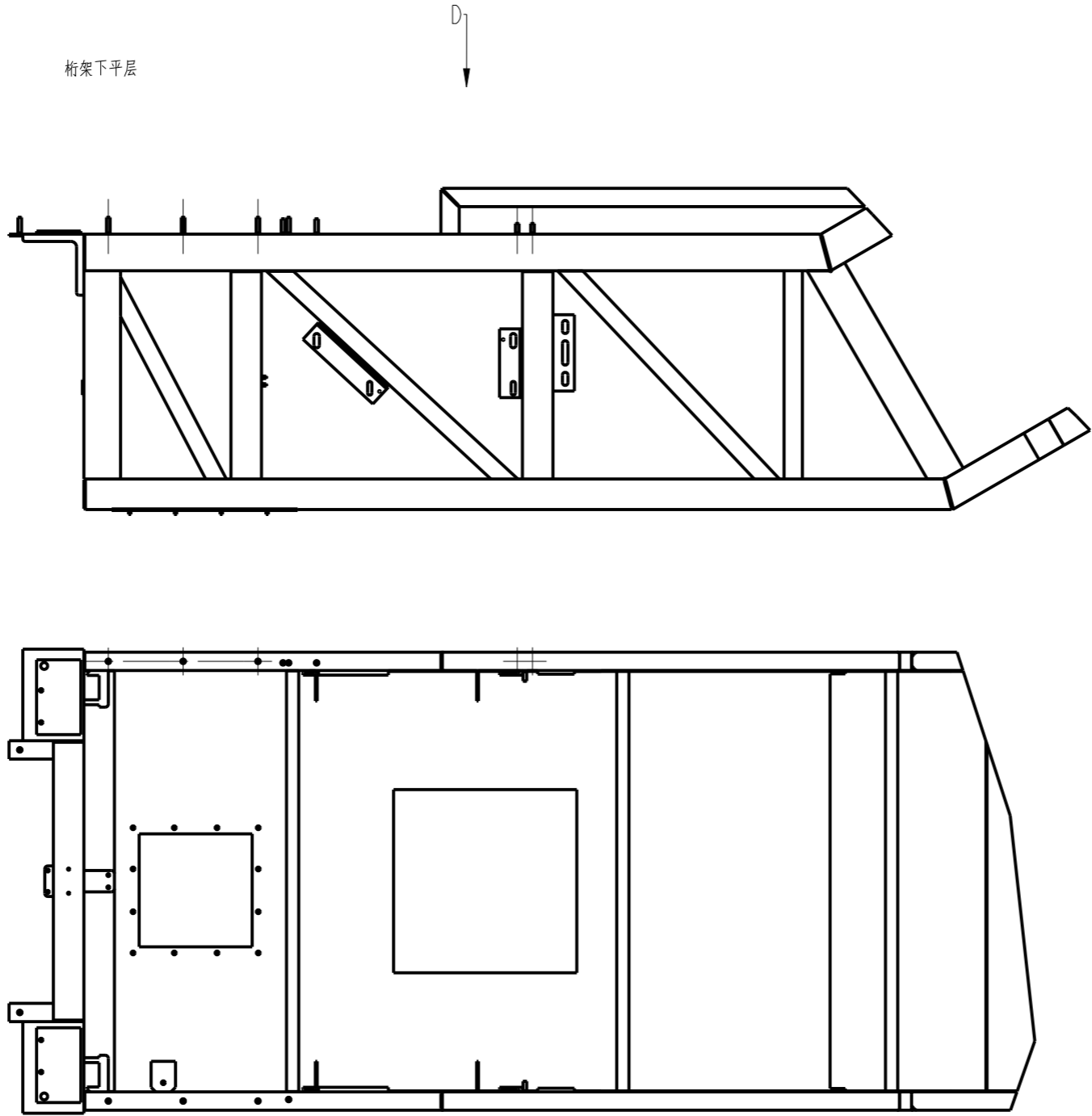
MATERIAL 材料:		DRAWN 制图 潘鑫	ORIGINAL DATE 日期
SPEC 规格:		CHK 校核 高慧玲	2016-04-30
FINISH 表面:		STANDARD 标准 朱红波	
		APPD 批准 李俊	共 页 SHEETS
		AUTH 授权 CAT20449	SHEET 第 4 页

ALL DIMENSIONS METRIC 所有尺寸采用公制

A3	FIRST ANGLE 第一视角	ISO 2768-1 中性值 ISO 2768-1 MEDIUM						RADIUS/CHAMFER 圆角/倒角			ANGLE (shorter side length) 角度(短边长度)					
	LENGTH/DIAMETER 长度/直径	0.5-6	>6-30	>30-120	>120-400	>400-1000	>1000-2000	>2000-4000	0.5-3	>3-6	>6	0-10	>10-50	>50-120	>120-400	>400
	TOLERANCE 公差	±0.1	±0.2	±0.3	±0.5	±0.8	±1.2	±2	±0.2	±0.5	±1	±1°	±0.5°	±0.3°	±0.15°	±0.1°

WELDS 焊接

z = LEG LENGTH
ANSI/ASME 39.21.99-29.8
WELDING SYMBOLS ARE
USED ON THIS DRAWING.
z = 焊脚尺寸
此图中焊接符号按照 ANSI/ASME 39.21.99-29.8



此图不按比例
drawing making with no proportion

Changes

WARNING 严重
THIS WORK AND THE INFORMATION IT CONTAINS ARE THE PROPERTY OF OTIS ELEVATOR COMPANY ("OTIS"). IT IS DELIVERED TO OTHERS ON THE EXPRESS CONDITION THAT IT WILL BE USED ONLY FOR, OR ON BEHALF OF, OTIS; THAT NEITHER IT NOR THE INFORMATION IT CONTAINS WILL BE REPRODUCED OR DISCLOSED, IN WHOLE OR IN PART, WITHOUT THE PRIOR WRITTEN CONSENT OF OTIS; AND THAT ON DEMAND IT AND ANY COPIES WILL BE PROMPTLY RETURNED TO OTIS.
UNPUBLISHED WORK © OTIS ELEVATOR COMPANY
内部资料 © 奥的斯电梯公司版权所有



前沿板接口
FLOORPLATE INTERFACE

MATERIAL 材料:
SPEC 规格:
FINISH 表面:

DWG 图号	HE0102A	
奥的斯杭州研发中心 OTIS ENGINEERING HANGZHOU		
DRAWN 制图	潘鑫	ORIGINAL DATE 日期
CHK 校核	高慧玲	2016-04-30
STANDARD 标准	朱红波	共 页 SHEETS SHEET 第 5 页
APPD 批准	李俊	
AUTH 授权	CAT20449	

ALL DIMENSIONS METRIC 所有尺寸采用公制

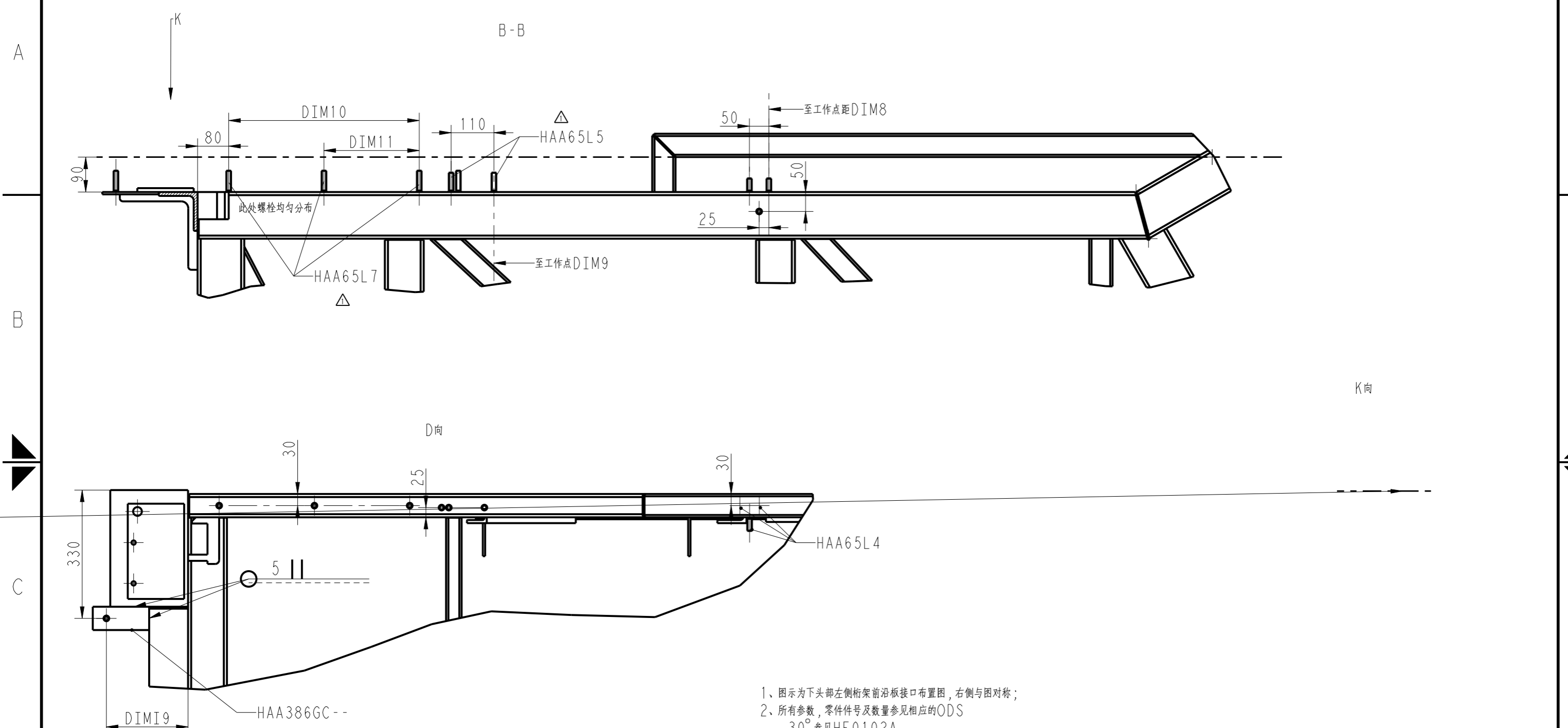
ACCORDING WITH OTIS DOCUMENT 52847 & DRAWING MANUAL ENG_H.S002
依据 OTIS 52847 和 ENG_H.S002 制图规范起草

由中国区提供 图框版本: 2016-04-26
FROM CHINA AREA Rev. 2016-04-26

1	ISO 2768-1 中性值 ISO 2768-1 MEDIUM	2	3	4
A3	FIRST ANGLE 第一视角	LENGTH/DIAMETER 长度/直径	RADIUS/CHAMFER 圆角/倒角	ANGLE (shorter side length) 角度 (短边长度)
	TOLERANCE 公差	TOLERANCE 公差	TOLERANCE 公差	TOLERANCE 公差
		0.5-6 >6-30 >30-120 >120-400 >400-1000 >1000-2000 >2000-4000	0.5-3 >3-6 >6	0-10 >10-50 >50-120 >120-400 >400
		±0.1 ±0.2 ±0.3 ±0.5 ±0.8 ±1.2 ±2	±0.2 ±0.5 ±1	±1° ±0.5° ±0.3° ±0.15° ±0.1°

WELDS 焊接

z = LEG LENGTH
ANSI/ASME 39-21.90-29.8
WELDING SYMBOLS ARE
USED ON THIS DRAWING.
z = 焊脚尺寸
此图中焊接符号按照 ANSI/ASME 39-21.90-29.8



此图不按比例
drawing making with no proportion

- 1、图示为下部左侧桁架前沿板接口布置图，右侧与图对称；
 - 2、所有参数，零件号及数量参见相应的ODS
30°参见HE0102A
- 1) THIS DRAWING ONLY DESCRIBED THE LEFT SIDE ASSEMBLY BASE OF FLOOR PALTE ON LOWER LANDING, THE RIGHT SIDE IS SYMMETRICAL.
- 2) ALL PARAMETERS AND PARTS NUMBER PLEASE REFER TO THE ODS 30° REFER TO HE0102A

由中国区提供 图框版本: 2016-04-26
FROM CHINA AREA Rev. 2016-04-26

Changes		Auth. 授权号	Engineer 工程师
日期 (DATE)	Change Description 变更内容描述		
2015-12-29	图面整理	CAT21767	潘鑫

WARNING 声明

THIS WORK AND THE INFORMATION IT CONTAINS ARE THE PROPERTY OF OTIS ELEVATOR COMPANY ("OTIS"). IT IS DELIVERED TO OTHERS ON THE EXPRESS CONDITION THAT IT WILL BE USED ONLY FOR, OR ON BEHALF OF, OTIS; THAT NEITHER IT NOR THE INFORMATION IT CONTAINS WILL BE REPRODUCED OR DISCLOSED, IN WHOLE OR IN PART, WITHOUT THE PRIOR WRITTEN CONSENT OF OTIS; AND THAT ON DEMAND IT AND ANY COPIES WILL BE PROMPTLY RETURNED TO OTIS.

UNPUBLISHED WORK © OTIS ELEVATOR COMPANY
内部资料 © 奥的斯电梯公司版权所有

下部桁架 - 前沿板接口
FLOORPLATE INTERFACE

MATERIAL 材料:

SPEC 规格:

FINISH 表面:

DWG 图号	HE0102A	
奥的斯杭州研发中心 OTIS ENGINEERING HANGZHOU		
DRAWN 制图	潘鑫	ORIGINAL DATE 日期
CHK 校核	高慧玲	2016-04-30
STANDARD 标准	朱红波	共 页 SHEETS SHEET 第 6 页
APPD 批准	李俊	
AUTH 授权	CAT20449	