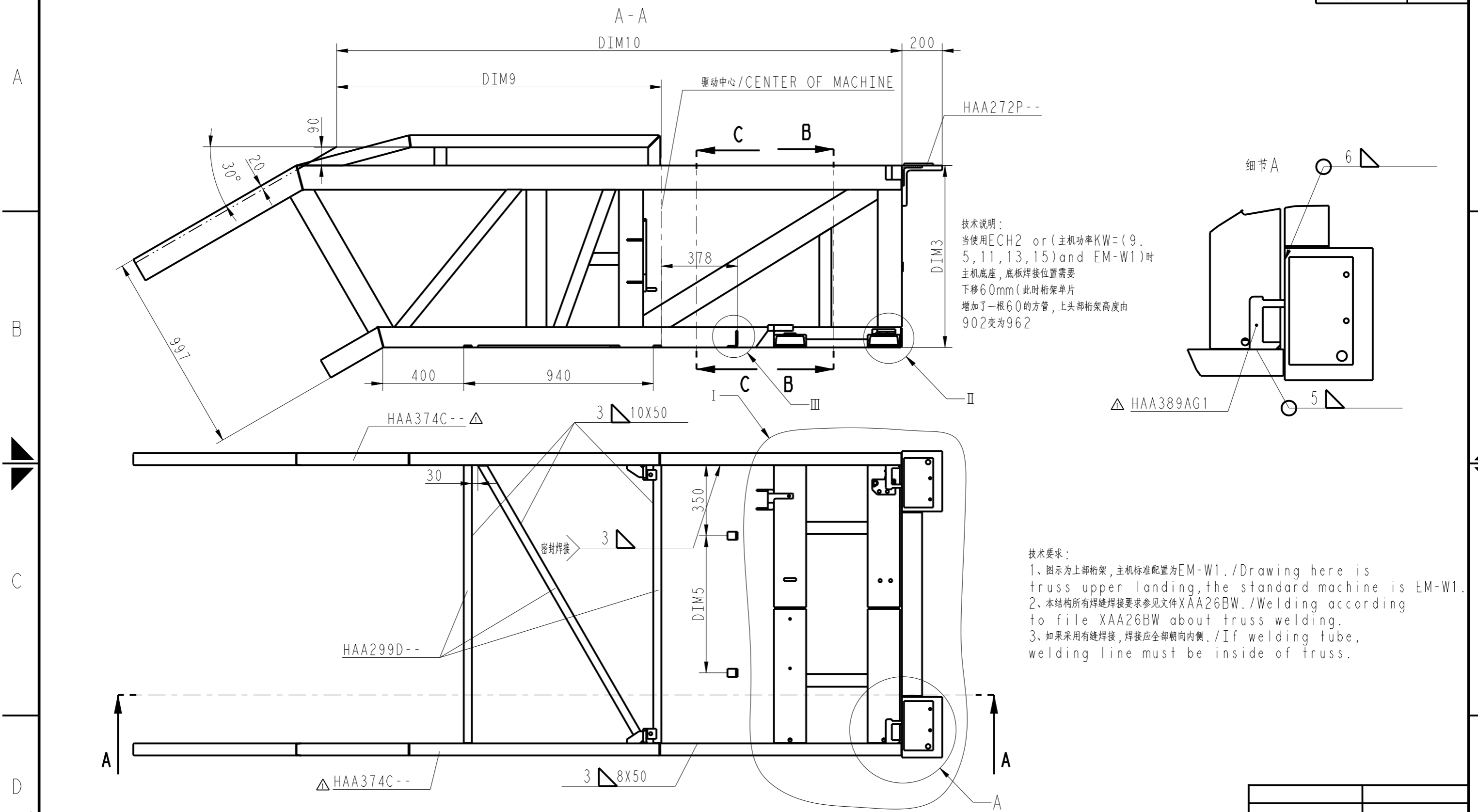


FIRST ANGLE 第一视角	LENGTH/DIAMETER 长度/直径	0.5-6	>6-30	>30-120	>120-400	>400-1000	>1000-2000	>2000-4000	RADIUS/CHAMFER 圆角/倒角	0.5-3	>3-6	>6	ANGLE (shorter side length) 角度(短边长度)	0-10	>10-50	>50-120	>120-400	>400
	TOLERANCE 公差	±0.1	±0.2	±0.3	±0.5	±0.8	±1.2	±2	TOLERANCE 公差	±0.2	±0.5	±1	TOLERANCE 公差	±1°	±0.5°	±0.3°	±0.15°	±0.1°

z = LEG LENGTH ANSI/ASME Z39-21 98-29.8 WELDING SYMBOLS ARE USED ON THIS DRAWING. Z = 焊脚尺寸 此图中焊接符号按照 ANSI/ASME Z39-21 98-29.8	
--	--



技术说明：
当使用ECH2 or (主机功率KW=(9, 5, 11, 13, 15) and EM-W1)时
主机底座，底板焊接位置需要
下移60mm(此时桁架单片
增加了一根60的方管，上头部桁架高度由
902变为962

技术要求：
1、图示为上桁架，主机标准配置为EM-W1./Drawing here is
truss upper landing, the standard machine is EM-W1.
2、本结构所有焊缝焊接要求参见文件XAA26BW./Welding according
to file XAA26BW about truss welding.
3、如果采用有缝焊接，焊接应全部朝向内侧./If welding tube,
welding line must be inside of truss.

由中国提供 图号版本: 2016-04-26
FROM CHINA AREA Rev. 2016-04-26

Changes		Auth. 授权号	Engineer 工程师
日期 (DATE)	Change Description 变更内容描述		
2016-12-29	号更新, 版面整理, 第2, 4, 6, 7页有更改;	CAT21767	潘鑫

WARNING 声明
THIS WORK AND THE INFORMATION IT CONTAINS ARE THE
PROPERTY OF OTIS ELEVATOR COMPANY ("OTIS"). IT IS
DELIVERED TO OTHERS ON THE EXPRESS CONDITION THAT
IT WILL BE USED ONLY FOR, OR ON BEHALF OF, OTIS;
THAT NEITHER IT NOR THE INFORMATION IT CONTAINS
WILL BE REPRODUCED OR DISCLOSED, IN WHOLE OR IN
PART, WITHOUT THE PRIOR WRITTEN CONSENT OF OTIS;
AND THAT ON DEMAND IT AND ANY COPIES WILL BE
PROMPTLY RETURNED TO OTIS.
UNPUBLISHED WORK © OTIS ELEVATOR COMPANY
内部资料 © 奥的斯电梯公司版权所有



30° 上部桁架
TRUSS UPPER LANDING

MATERIAL 材料: _____

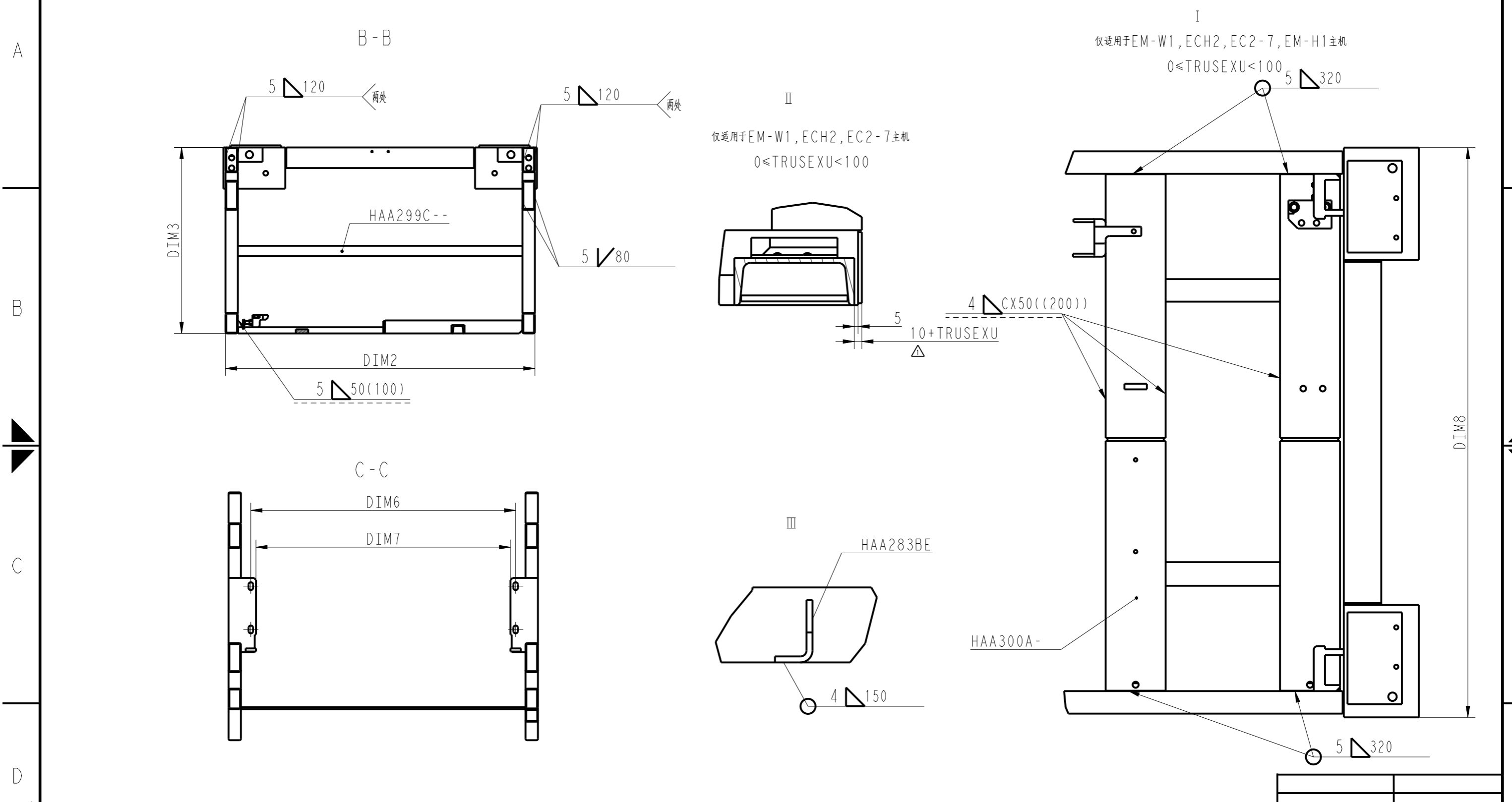
SPEC 规格: _____

FINISH 表面: _____

DWG 图号	HE0101A	
奥的斯杭州研发中心 OTIS ENGINEERING HANGZHOU		
DRAWN 制图	潘鑫	ORIGINAL DATE 日期
CHK 校核	高慧玲	2016-04-30
STANDARD 标准	朱红波	
APPD 批准	李俊	共 8 页 SHEETS
AUTH 授权	CAT20449	SHEET 第 1 页

1	ISO 2768-1 中性值 ISO 2768-1 MEDIUM	2	3	4	
A3	FIRST ANGLE 第一视角	LENGTH/DIAMETER 长度/直径	RADIUS/CHAMFER 圆角/倒角	ANGLE (shorter side length) 角度(短边长度)	WELDS 焊接
	TOLERANCE 公差	TOLERANCE 公差	TOLERANCE 公差	TOLERANCE 公差	
		0.5-6	0.5-3	0-10	
		>6-30	>3-6	>10-50	
		>30-120	>6	>50-120	
		>120-400		>120-400	
		>400-1000		>400	
		>1000-2000			
		>2000-4000			

z = LEG LENGTH
ANSI/ASME A92.3-2013
WELDING SYMBOLS ARE
USED ON THIS DRAWING.
z = 焊脚尺寸
此图中焊接符号按照 ANSI/ASME A92.3-2013



Changes		Auth. 授权号	Engineer 工程师
日期 (DATE)	Change Description 变更内容描述		
2016-12-29	尺寸更改, 版面整理	CAT21767	潘鑫

WARNING 声明
THIS WORK AND THE INFORMATION IT CONTAINS ARE THE PROPERTY OF OTIS ELEVATOR COMPANY ("OTIS"). IT IS DELIVERED TO OTHERS ON THE EXPRESS CONDITION THAT IT WILL BE USED ONLY FOR, OR ON BEHALF OF, OTIS; THAT NEITHER IT NOR THE INFORMATION IT CONTAINS WILL BE REPRODUCED OR DISCLOSED, IN WHOLE OR IN PART, WITHOUT THE PRIOR WRITTEN CONSENT OF OTIS; AND THAT ON DEMAND IT AND ANY COPIES WILL BE PROMPTLY RETURNED TO OTIS.
UNPUBLISHED WORK © OTIS ELEVATOR COMPANY
内部资料 © 奥的斯电梯公司版权所有



30° 上部桁架
TRUSS UPPER LANDING

MATERIAL 材料: _____

SPEC 规格: _____

FINISH 表面: _____

DWG 图号		HE0101A	
奥的斯杭州研发中心 OTIS ENGINEERING HANGZHOU			
DRAWN 制图	潘鑫	ORIGINAL DATE 日期	2016-04-30
CHK 校核	高慧玲		
STANDARD 标准	朱红波		
APPD 批准	李俊	共 页 SHEETS	
AUTH 授权	CAT20449	SHEET 第 2 页	

由中国区提供 图框版本: 2016-04-26
FROM CHINA AREA Rev. 2016-04-26

ALL DIMENSIONS METRIC 所有尺寸采用公制

ACCORDING WITH OTIS DOCUMENT 52847 & DRAWING MANUAL ENG_H.S002
依据 OTIS 52847 和 ENG_H.S002 制图规范起草

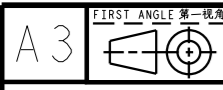
1

ISO 2768-1 中性值
ISO 2768-1 MEDIUM

2

3

4



LENGTH/DIAMETER 长度/直径	0.5-6	>6-30	>30-120	>120-400	>400-1000	>1000-2000	>2000-4000
TOLERANCE 公差	±0.1	±0.2	±0.3	±0.5	±0.8	±1.2	±2

RADIUS/CHAMFER 圆角/倒角	0.5-3	>3-6	>6
TOLERANCE 公差	±0.2	±0.5	±1

ANGLE (shorter side length) 角度 (短边长度)	0-10	>10-50	>50-120	>120-400	>400
TOLERANCE 公差	±1°	±0.5°	±0.3°	±0.15°	±0.1°

z = LEG LENGTH ANSI/ASME 31.21-98-29.8 WELDING SYMBOLS ARE USED ON THIS DRAWING. z = 焊脚尺寸 此图中焊接符号按照 ANSI/ASME 31.21-98-29.8	
--	--

A

B

C

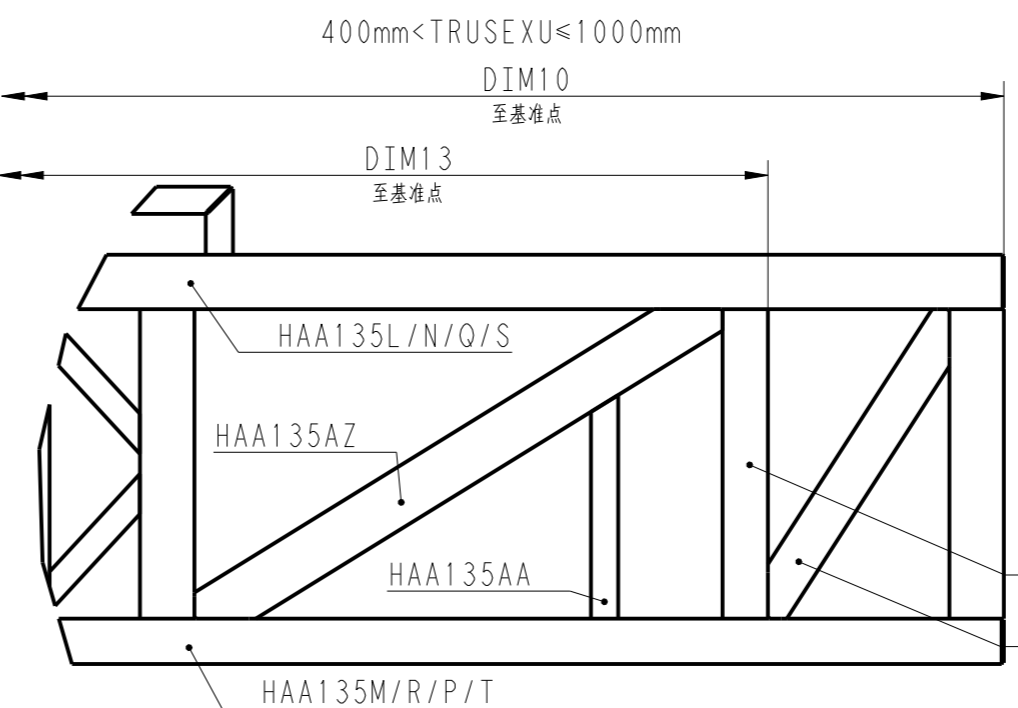
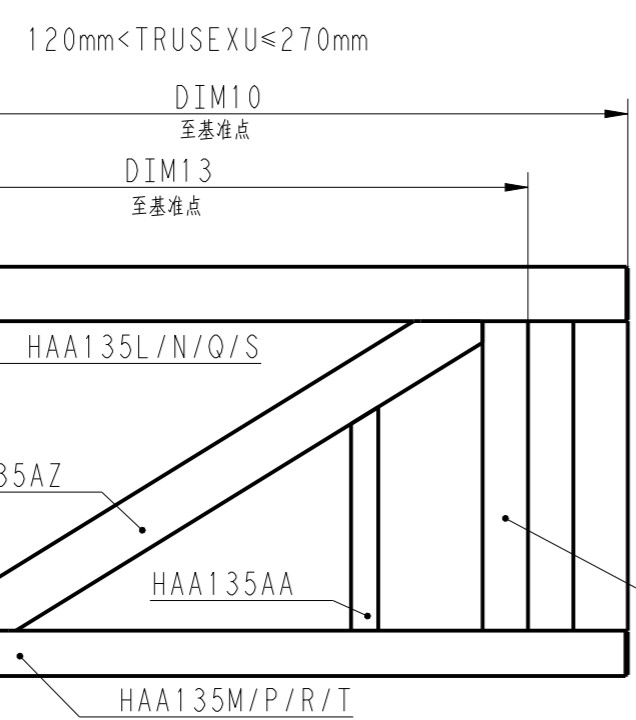
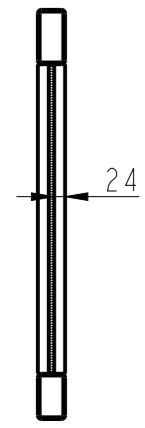
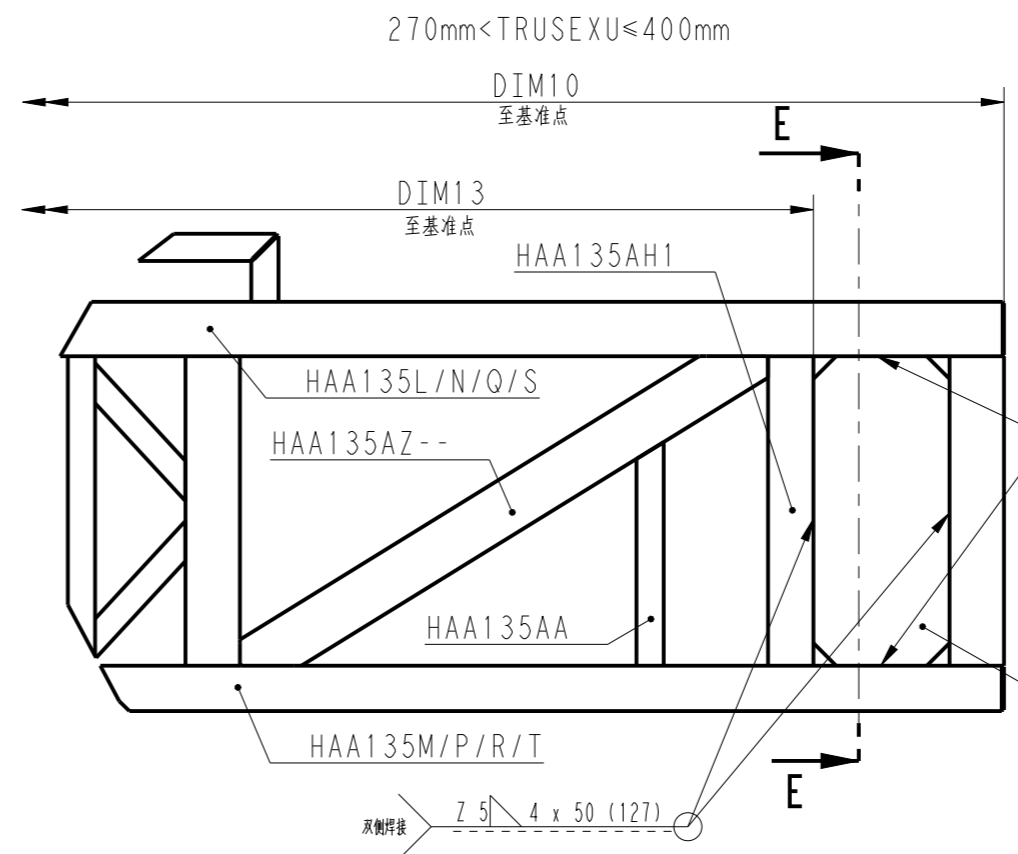
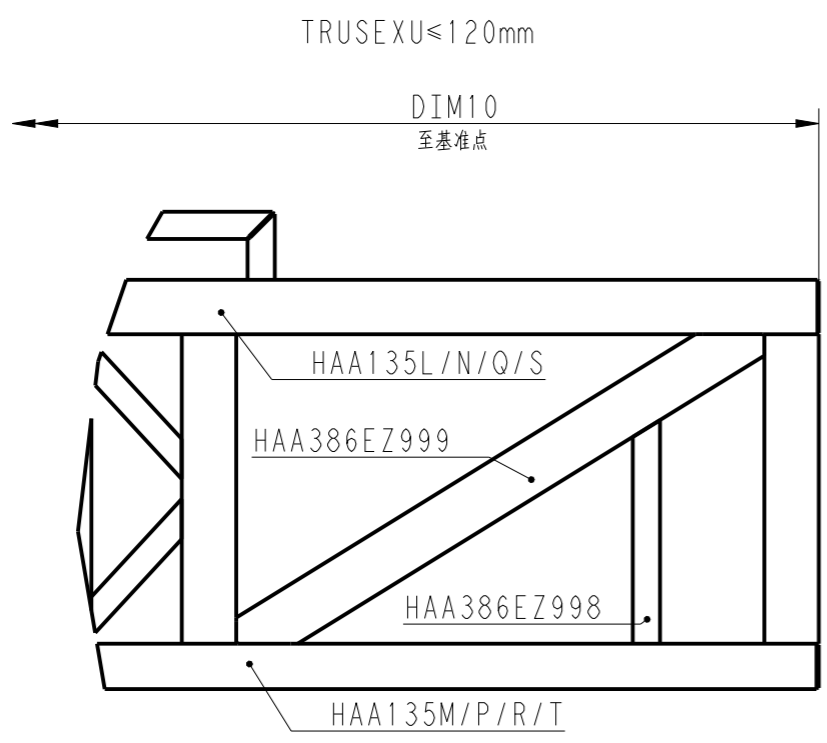
D

A

B

C

D



- 注:
1. 本页视图仅适用于上部桁架延长情况下左侧单片调整, 右侧单片与之对称, 其他部分与标准桁架同。
 2. 参数请参见HE0101A;
 3. 零件连接处都需要焊接, 未标注焊接符号参见XAA26BW.

由中国区提供 图框版本: 2016-04-26
FROM CHINA AREA Rev.: 2016-04-26

Changes

WARNING 声明
THIS WORK AND THE INFORMATION IT CONTAINS ARE THE PROPERTY OF OTIS ELEVATOR COMPANY ("OTIS"). IT IS DELIVERED TO OTHERS ON THE EXPRESS CONDITION THAT IT WILL BE USED ONLY FOR, OR ON BEHALF OF, OTIS; THAT NEITHER IT NOR THE INFORMATION IT CONTAINS WILL BE REPRODUCED OR DISCLOSED, IN WHOLE OR IN PART, WITHOUT THE PRIOR WRITTEN CONSENT OF OTIS; AND THAT ON DEMAND IT AND ANY COPIES WILL BE PROMPTLY RETURNED TO OTIS.
UNPUBLISHED WORK © OTIS ELEVATOR COMPANY
内部资料 © 奥的斯电梯公司版权所有



桁架延伸 (上部)
Truss extension (head)

MATERIAL 材料:
SPEC 规格:
FINISH 表面:

DWG 图号	HE0101A	
奥的斯杭州研发中心 OTIS ENGINEERING HANGZHOU		
DRAWN 制图	潘鑫	ORIGINAL DATE 日期
CHK 校核	高慧玲	2016-04-30
STANDARD 标准	朱红波	共 页 SHEETS
APPD 批准	李俊	SHEET 第 3 页
AUTH 授权	CAT20449	

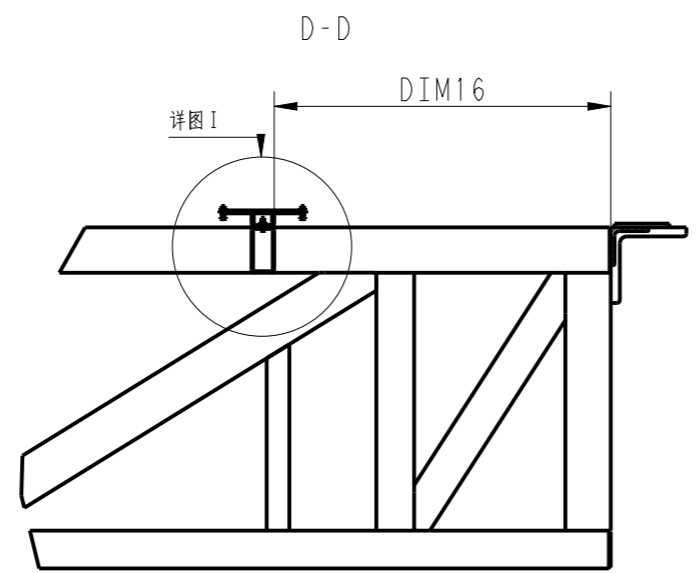
ALL DIMENSIONS METRIC 所有尺寸采用公制

ACCORDING WITH OTIS DOCUMENT 52847 & DRAWING MANUAL ENG_H.S002
依据 OTIS 52847 和 ENG_H.S002 制图规范起草

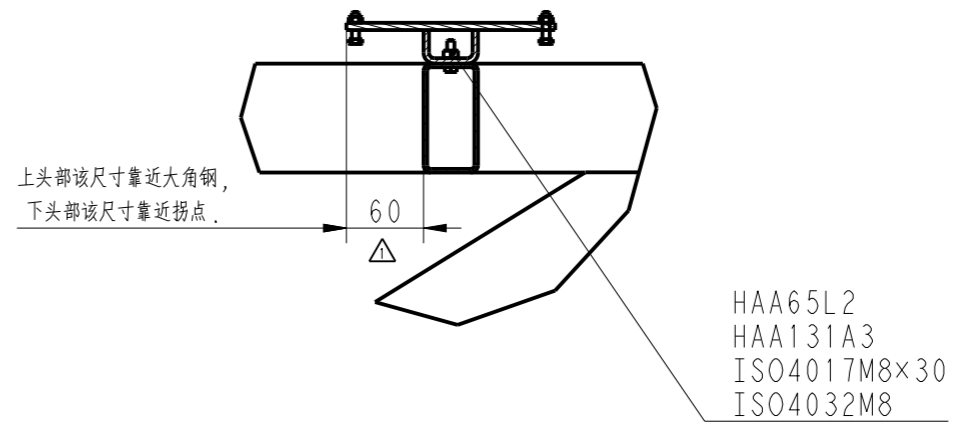
1	ISO 2768-1 中性值 ISO 2768-1 MEDIUM	2	3	4																																	
A3	FIRST ANGLE 第一视角	LENGTH/DIAMETER 长度/直径	0.5-6	>6-30	>30-120	>120-400	>400-1000	>1000-2000	>2000-4000	RADIUS/CHAMFER 圆角/倒角	0.5-3	>3-6	>6	ANGLE (shorter side length) 角度(短边长度)	0-10	>10-50	>50-120	>120-400	>400	TOLERANCE 公差	±0.1	±0.2	±0.3	±0.5	±0.8	±1.2	±2	±0.2	±0.5	±1	±1°	±0.5°	±0.3°	±0.15°	±0.1°	z = LEG LENGTH ANSI/ASME Z39-21 98-29.8 WELDING SYMBOLS ARE USED ON THIS DRAWING. z = 焊脚尺寸 此图中焊接符号按照 ANSI/ASME Z39-21 98-29.8	WELDS 焊接

A
B
C
D

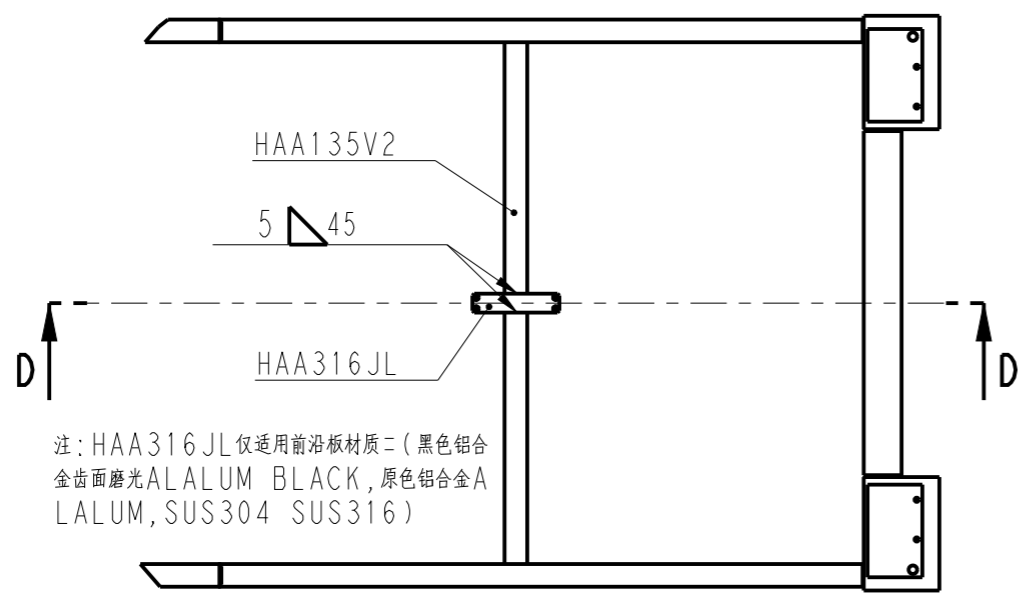
A
B
C
D



详图 I



上部桁架
(仅用于TRUSEXU ≥ 500mm时)



注: HAA316 JL 仅适用前沿板材质= (黑色铝合金齿面磨光ALALUM BLACK, 原色铝合金ALALUM, SUS304 SUS316)

由中国提供 图样版本: 2016-04-26
FROM CHINA AREA Rev. 2016-04-26

Changes			
日期 (DATE)	Change Description 变更内容描述	Auth. 授权号	Engineer 工程师
2016-12-29	尺寸更改, 版面整理	CAT21767	潘鑫

WARNING 声明
THIS WORK AND THE INFORMATION IT CONTAINS ARE THE PROPERTY OF OTIS ELEVATOR COMPANY ("OTIS"). IT IS DELIVERED TO OTHERS ON THE EXPRESS CONDITION THAT IT WILL BE USED ONLY FOR, OR ON BEHALF OF, OTIS; THAT NEITHER IT NOR THE INFORMATION IT CONTAINS WILL BE REPRODUCED OR DISCLOSED, IN WHOLE OR IN PART, WITHOUT THE PRIOR WRITTEN CONSENT OF OTIS; AND THAT ON DEMAND IT AND ANY COPIES WILL BE PROMPTLY RETURNED TO OTIS.
UNPUBLISHED WORK © OTIS ELEVATOR COMPANY
内部资料 © 奥的斯电梯公司版权所有



整体桁架延伸
The overall truss stretching

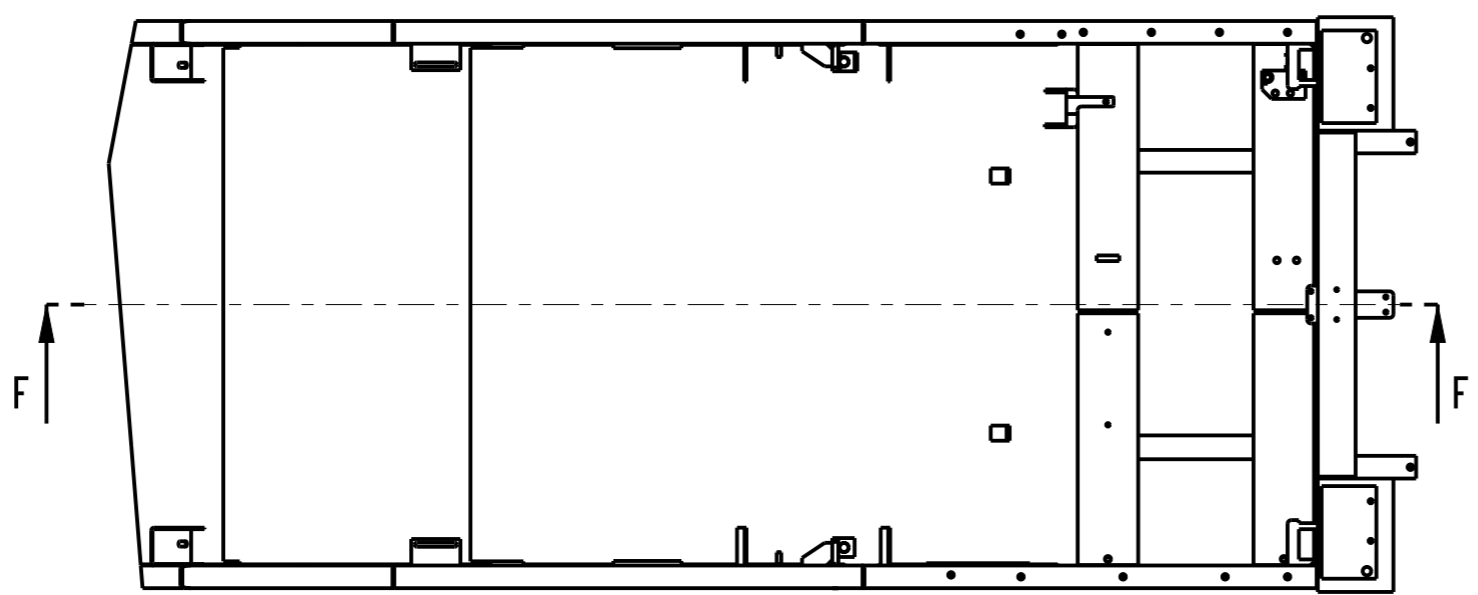
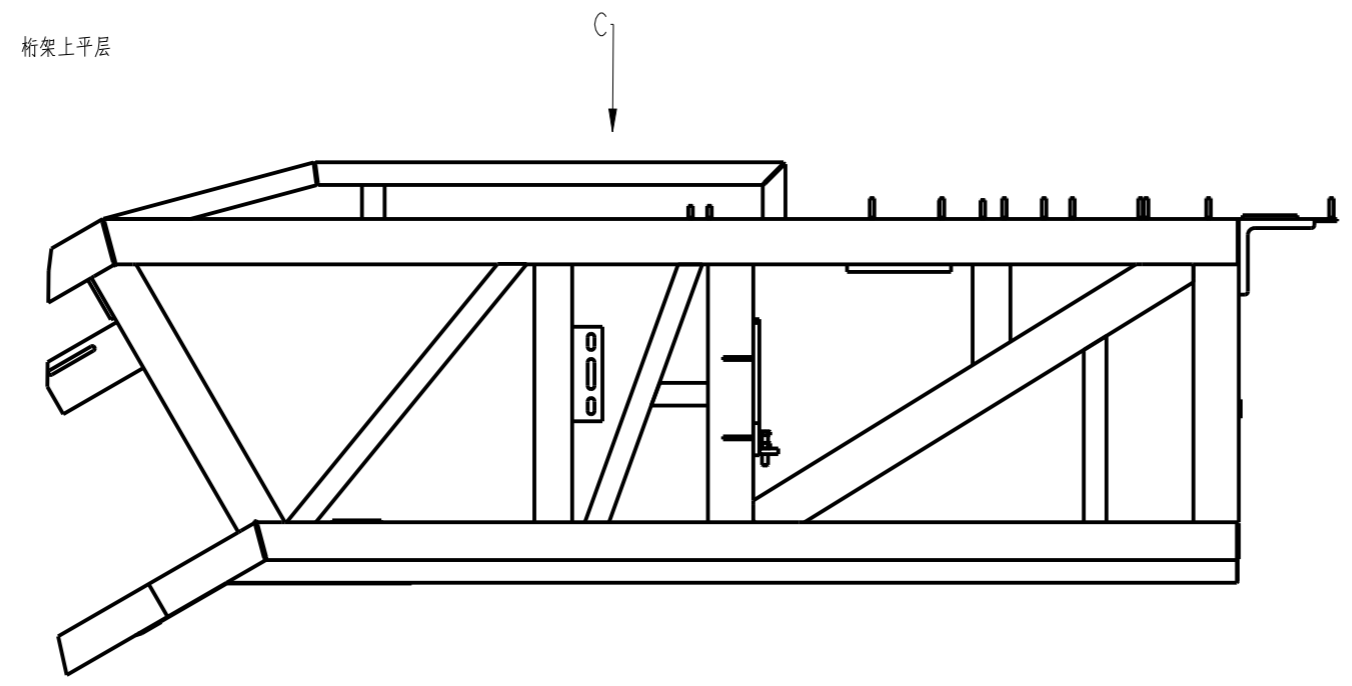
MATERIAL 材料:
SPEC 规格:
FINISH 表面:

DWG 图号		HE0101A	
奥的斯杭州研发中心 OTIS ENGINEERING HANGZHOU			
DRAWN 制图	潘鑫	ORIGINAL DATE 日期	2016-04-30
CHK 校核	高慧玲		
STANDARD 标准	朱红波		
APPD 批准	李俊	共 页 SHEETS	
AUTH 授权	CAT20449	SHEET 第	4 页

A3	FIRST ANGLE 第一视角	ISO 2768-1 中性值							RADIUS/CHAMFER	0.5-3	>3-6	>6	ANGLE (shorter side length)	0-10	>10-50	>50-120	>120-400	>400
		ISO 2768-1 MEDIUM	LENGTH/DIAMETER	0.5-6	>6-30	>30-120	>120-400	>400-1000	>1000-2000	>2000-4000	圆角/倒角		角度(短边长度)					
		TOLERANCE	±0.1	±0.2	±0.3	±0.5	±0.8	±1.2	±2	公差	±0.2	±0.5	±1	TOLERANCE	±1°	±0.5°	±0.3°	±0.15°

WELDS 焊接

z = LEG LENGTH
ANSI/ASME 31.21-99-29.8
WELDING SYMBOLS ARE
USED ON THIS DRAWING.
z = 焊脚尺寸
此图中焊接符号按照 ANSI/ASME 31.21-99-29.8



此图不按比例
drawing making with no proportion

Changes

WARNING 严重
THIS WORK AND THE INFORMATION IT CONTAINS ARE THE PROPERTY OF OTIS ELEVATOR COMPANY ("OTIS"). IT IS DELIVERED TO OTHERS ON THE EXPRESS CONDITION THAT IT WILL BE USED ONLY FOR, OR ON BEHALF OF, OTIS; THAT NEITHER IT NOR THE INFORMATION IT CONTAINS WILL BE REPRODUCED OR DISCLOSED, IN WHOLE OR IN PART, WITHOUT THE PRIOR WRITTEN CONSENT OF OTIS; AND THAT ON DEMAND IT AND ANY COPIES WILL BE PROMPTLY RETURNED TO OTIS.
UNPUBLISHED WORK © OTIS ELEVATOR COMPANY
内部资料 © 奥的斯电梯公司版权所有



前沿板接口
FLOORPLATE INTERFACE

MATERIAL 材料:
SPEC 规格:
FINISH 表面:

DWG 图号	HE0101A	
奥的斯杭州研发中心 OTIS ENGINEERING HANGZHOU		
DRAWN 制图	周争光	ORIGINAL DATE 日期
CHK 校核	何晓松	2016-04-30
STANDARD 标准	朱红波	共 页 SHEETS SHEET 第 5 页
APPD 批准	李俊	
AUTH 授权	CAT20449	

由中国区提供 图框版本: 2016-04-26
FROM CHINA AREA Rev. 2016-04-26

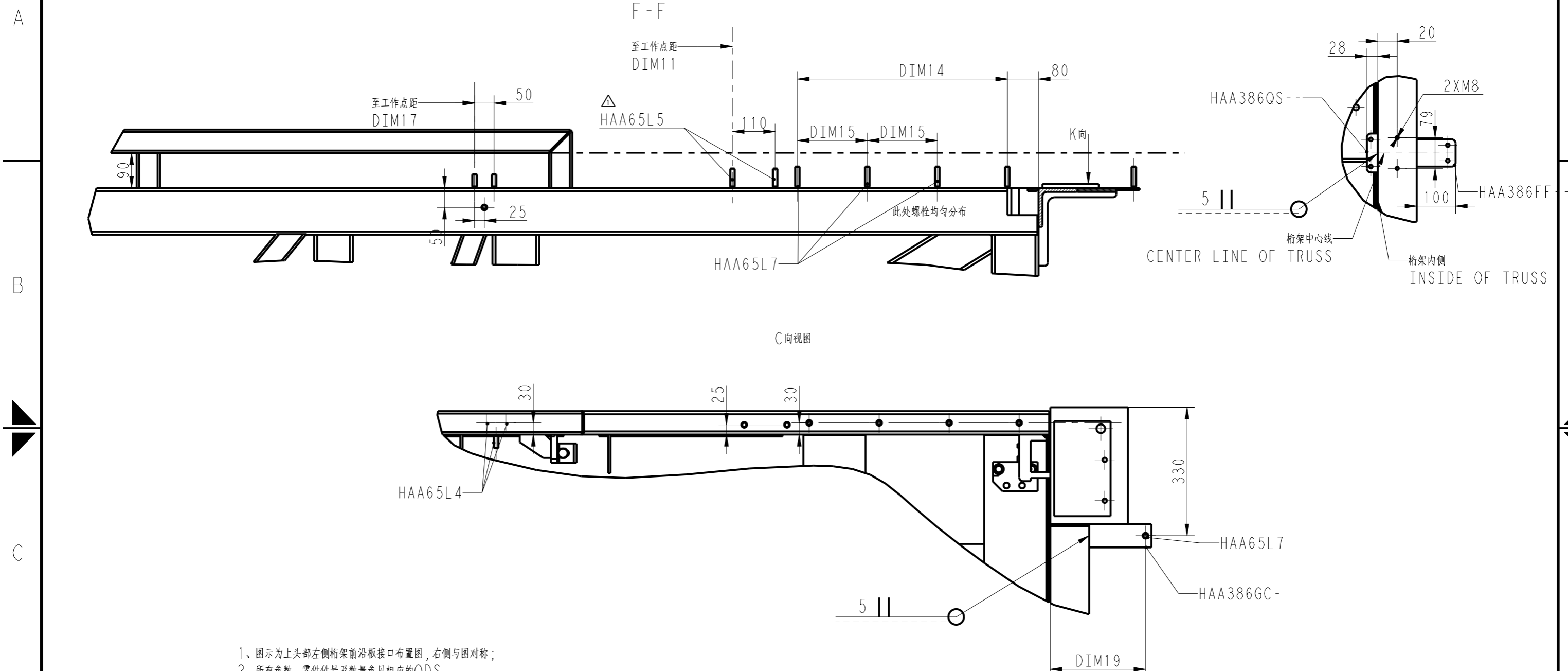
1 ALL DIMENSIONS METRIC 所有尺寸采用公制

4 ACCORDING WITH OTIS DOCUMENT 52847 & DRAWING MANUAL ENG_H.S002
依据 OTIS 52847 和 ENG_H.S002 制图规范起草

1	ISO 2768-1 中性值 ISO 2768-1 MEDIUM	2	3	4
A3	FIRST ANGLE 第一视角	LENGTH/DIAMETER 长度/直径	RADIUS/CHAMFER 圆角/倒角	ANGLE (shorter side length) 角度(短边长度)
	TOLERANCE 公差	TOLERANCE 公差	TOLERANCE 公差	TOLERANCE 公差

WELDS 焊接

z = LEG LENGTH
ANSI/ASME 31.21-98/29.8
WELDING SYMBOLS ARE
USED ON THIS DRAWING.
z = 焊脚尺寸
此图中焊接符号按照 ANSI/ASME 31.21-98/29.8



- 1、图示为上头部左侧桁架前沿板接口布置图，右侧与图对称；
 2、所有参数，零件号及数量参见相应的ODS
 30° 参见HE0101A
 1) THIS DRAWING ONLY DESCRIBED THE LEFT SIDE ASSEMBLY BASE OF FLOOR PALTE ON UPPER LANDING, THE RIGHT SIDE IS SYMMETRICAL.
 2) ALL PARAMETERS AND PARTS NUMBER PLEASE REFER TO THE ODS
 30° REFER TO HE0101A,

由中国提供 图号版本: 2016-04-26
FROM CHINA AREA Rev. 2016-04-26

Changes		Auth. 授权号	Engineer 工程师
日期 (DATE)	Change Description 变更内容描述	CAT21767	潘鑫
2016-12-29	符号更改, 版面整理		

WARNING 警告
 THIS WORK AND THE INFORMATION IT CONTAINS ARE THE PROPERTY OF OTIS ELEVATOR COMPANY ("OTIS"). IT IS DELIVERED TO OTHERS ON THE EXPRESS CONDITION THAT IT WILL BE USED ONLY FOR, OR ON BEHALF OF, OTIS; THAT NEITHER IT NOR THE INFORMATION IT CONTAINS WILL BE REPRODUCED OR DISCLOSED, IN WHOLE OR IN PART, WITHOUT THE PRIOR WRITTEN CONSENT OF OTIS; AND THAT ON DEMAND IT AND ANY COPIES WILL BE PROMPTLY RETURNED TO OTIS.
 UNPUBLISHED WORK © OTIS ELEVATOR COMPANY
 内部资料 © 奥的斯电梯公司版权所有

OTIS
 United Technologies

上部桁架 - 前沿板接口
 FLOORPLATE INTERFACE

MATERIAL 材料:

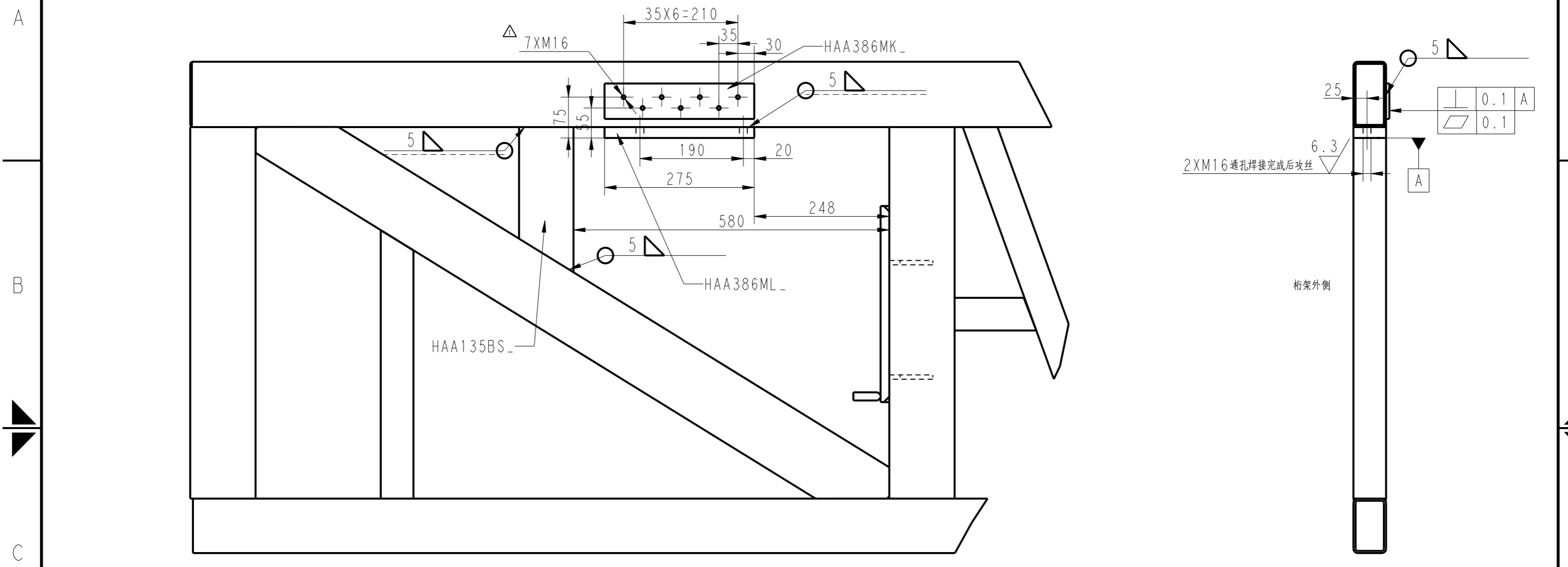
SPEC 规格:

FINISH 表面:

DWG 图号		HE0101A	
奥的斯杭州研发中心 OTIS ENGINEERING HANGZHOU			
DRAWN 制图	潘鑫	ORIGINAL DATE 日期	2016-04-30
CHK 校核	高慧玲		
STANDARD 标准	朱红波		
APPD 批准	李俊	共 页 SHEETS	
AUTH 授权	CAT20449	SHEET 第 6 页	

A3	FIRST ANGLE 第一视角	LENGTH/DIAMETER 长度/直径	0.5-6	>6-30	>30-120	>120-400	>400-1000	>1000-2000	>2000-4000	RADIUS/CHAMFER 圆角/倒角	0.5-3	>3-6	>6	ANGLE (shorter side length) 角度(短边长度)	0-10	>10-50	>50-120	>120-400	>400
		TOLERANCE 公差	±0.1	±0.2	±0.3	±0.5	±0.8	±1.2	±2	TOLERANCE 公差	±0.2	±0.5	±1	TOLERANCE 公差	±1°	±0.5°	±0.3°	±0.15°	±0.1°

z = LEG LENGTH ANSI/ASME Z39-21 949-29.6 WELDING SYMBOLS ARE USED ON THIS DRAWING. z = 焊脚尺寸 此图中焊接符号按照 ANSI/ASME Z39-21 949-29.6	
--	--



注：该图为附加制动器在桁架非主驱动侧，桁架接口如图

由中国区提供 图框版本: 2016-04-26
FROM CHINA AREA Rev. 2016-04-26

Changes		Auth. 授权号	Engineer 工程师
日期 (DATE)	Change Description 变更内容描述		
2016-12-29	尺寸更改, 版面整理	CAT21767	潘鑫

WARNING 声明
THIS WORK AND THE INFORMATION IT CONTAINS ARE THE PROPERTY OF OTIS ELEVATOR COMPANY ("OTIS"). IT IS DELIVERED TO OTHERS ON THE EXPRESS CONDITION THAT IT WILL BE USED ONLY FOR, OR ON BEHALF OF, OTIS; THAT NEITHER IT NOR THE INFORMATION IT CONTAINS WILL BE REPRODUCED OR DISCLOSED, IN WHOLE OR IN PART, WITHOUT THE PRIOR WRITTEN CONSENT OF OTIS; AND THAT ON DEMAND IT AND ANY COPIES WILL BE PROMPTLY RETURNED TO OTIS.
UNPUBLISHED WORK © OTIS ELEVATOR COMPANY
内部资料 © 奥的斯电梯公司版权所有



桁架 - 附加制动器接口
The truss-additional brake port

MATERIAL 材料:

SPEC 规格:

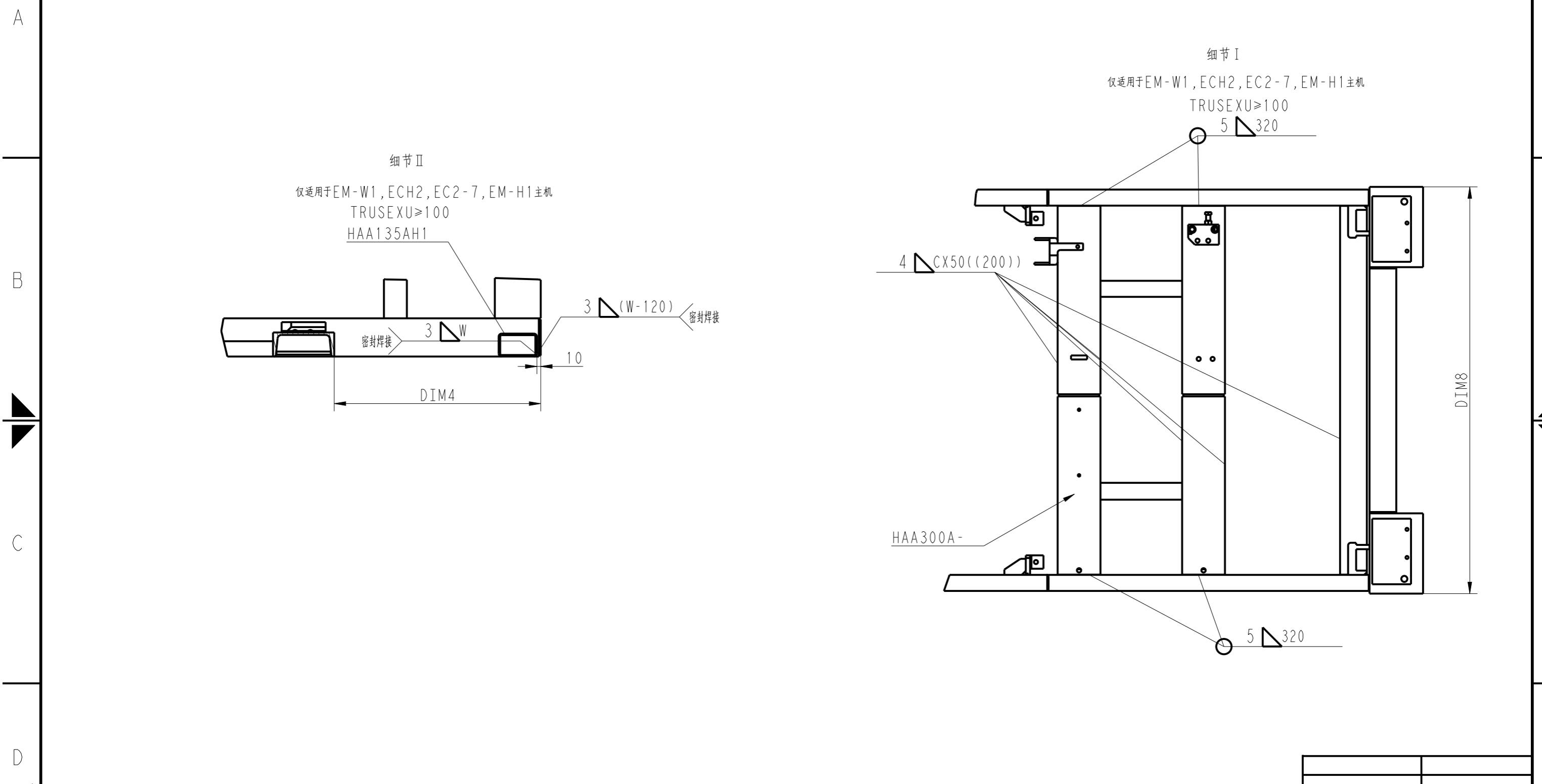
FINISH 表面:

DWG 图号	HE0101A	
奥的斯杭州研发中心 OTIS ENGINEERING HANGZHOU		
DRAWN 制图	潘鑫	ORIGINAL DATE 日期
CHK 校核	高慧玲	2016-04-30
STANDARD 标准	朱红波	
APPD 批准	李俊	共 页 SHEETS
AUTH 授权	CAT20449	SHEET 第 7 页

1	ISO 2768-1 中性值 ISO 2768-1 MEDIUM	2	3	4
A3	FIRST ANGLE 第一视角	LENGTH/DIAMETER 长度/直径	RADIUS/CHAMFER 圆角/倒角	ANGLE (shorter side length) 角度(短边长度)
	TOLERANCE 公差	TOLERANCE 公差	TOLERANCE 公差	TOLERANCE 公差
		0.5-6	0.5-3	0-10
		>6-30	>3-6	>10-50
		>30-120	>6	>50-120
		>120-400		>120-400
		>400-1000		>400
		>1000-2000		
		>2000-4000		

WELDS 焊接

z = LEG LENGTH
ANSI/ASME 31.21-99-29.8
WELDING SYMBOLS ARE
USED ON THIS DRAWING.
z = 焊脚尺寸
此图中焊缝符号按照 ANSI/ASME 31.21-99-29.8



Changes	
<p>WARNING 声明</p> <p>THIS WORK AND THE INFORMATION IT CONTAINS ARE THE PROPERTY OF OTIS ELEVATOR COMPANY ("OTIS"). IT IS DELIVERED TO OTHERS ON THE EXPRESS CONDITION THAT IT WILL BE USED ONLY FOR, OR ON BEHALF OF, OTIS; THAT NEITHER IT NOR THE INFORMATION IT CONTAINS WILL BE REPRODUCED OR DISCLOSED, IN WHOLE OR IN PART, WITHOUT THE PRIOR WRITTEN CONSENT OF OTIS; AND THAT ON DEMAND IT AND ANY COPIES WILL BE PROMPTLY RETURNED TO OTIS.</p> <p>UNPUBLISHED WORK © OTIS ELEVATOR COMPANY 内部资料 © 奥的斯电梯公司版权所有</p>	

30° 上部桁架
TRUSS UPPER LANDING

MATERIAL 材料:

SPEC 规格:

FINISH 表面:

DWG 图号		HE0101A	
奥的斯杭州研发中心 OTIS ENGINEERING HANGZHOU			
DRAWN 制图	潘鑫	ORIGINAL DATE 日期	2016-04-30
CHK 校核	高慧玲	共 页 SHEETS	SHEET 第 8 页
STANDARD 标准	朱红波		
APPD 批准	李俊		
AUTH 授权	CAT20449		

由中国区提供 图框版本: 2016-04-26
FROM CHINA AREA Rev. 2016-04-26