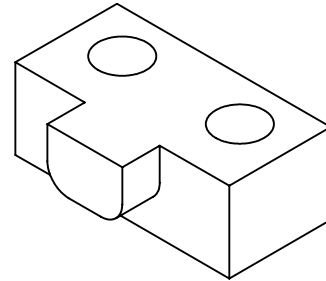
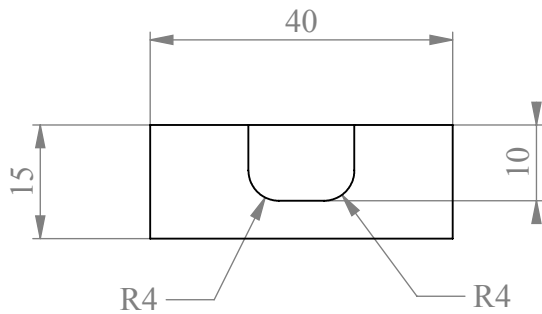


Material :  
**Steel 34 CrNiMo6 or AISI 4340**  
 Heat treat (quench and temper) to tensile strength of Rm 750 - 950 MPa.

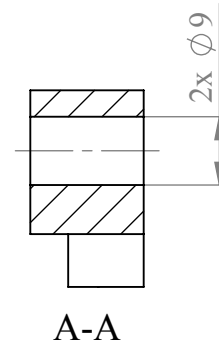
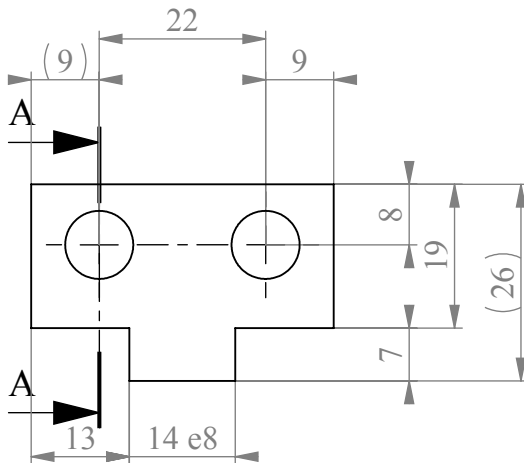
Heat treatment :  
 Everywhere  
 Protection of surf :

√3.2  
 Unless Otherwise Indicated

A



A



EXEPT OTHER INDICATION

General tolerances to be respected :  
 ISO 2768 : m & k  
 Welding : v  
 Sheet Metal : v  
 Mould : ISO 8062  
 Surface texture : ISO 1302  
 Welding Symbols : ISO 2553

WA +10

-	17/03/2016	FX10394	Creation du document
Mod	Date	By	Modifications

Mass (Kg) :  
 0.082

Reference Number

**CLAVETTE**

CAUTION :  
 All dimensions are in millimeters  
 and projected view in ISO std

**21637-00813-MPE**

Rev :  
 -

Toute copie imprimée de ce document n'est pas gérée  
 Propriété exclusive de notre société. Reproduction  
 ou utilisation interdite sans notre accord écrit.  
 Any printed copy of this document is not managed  
 Exclusive property of our company. Reproduction  
 or prohibited use without our written agreement.

Drawing Number

DTM Class : 2-01-07	DTE Class : ...	D3
Size : A4	Scale : 1:1	Units : mm SolidWorks 2012

Sheet :  
**1/1**