

1 2 3 4 5 6

A

B

C

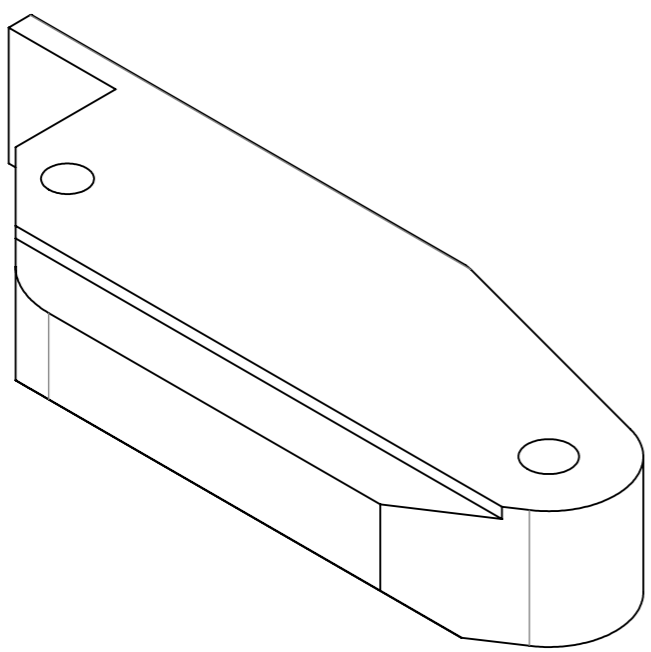
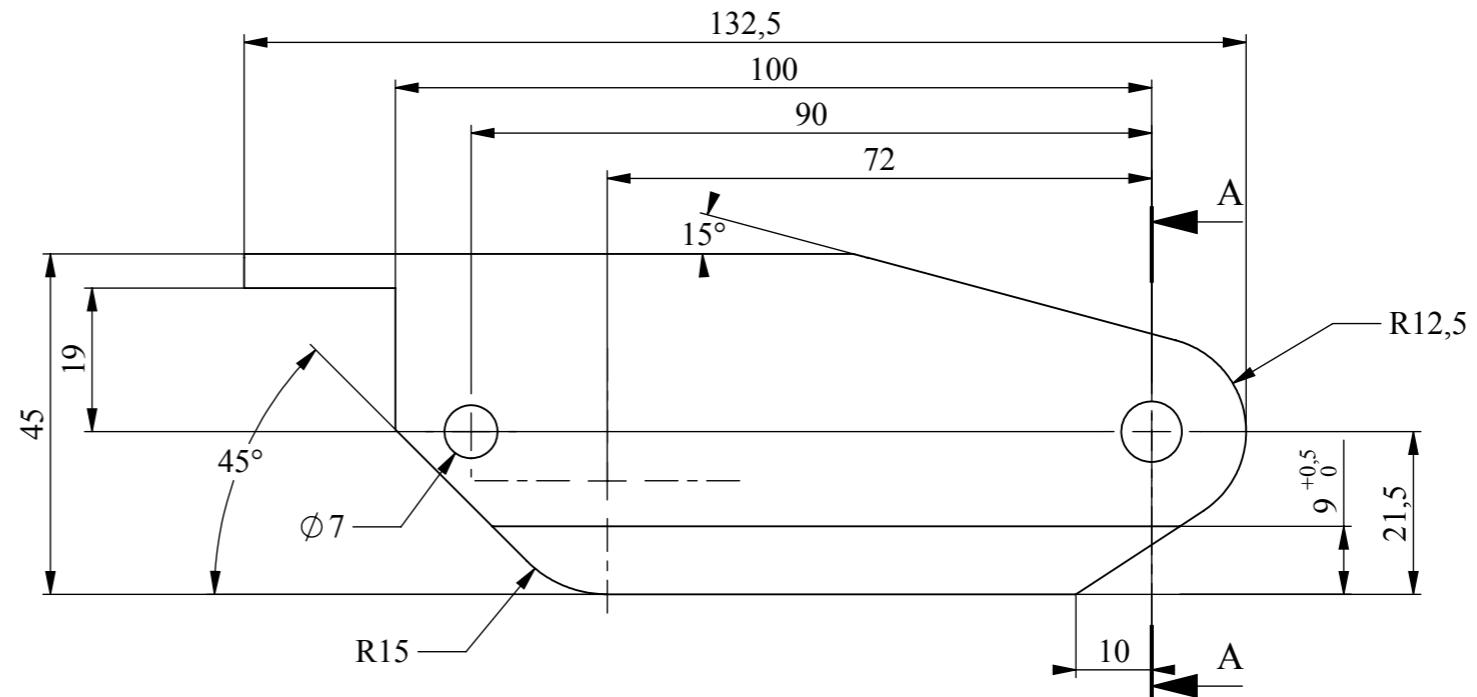
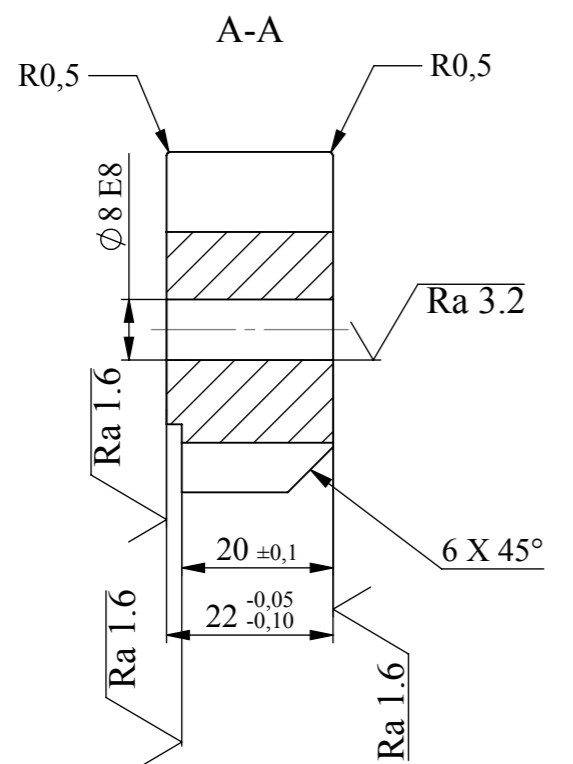
D

A

B

C

D



Casser les angles vifs / Remove sharp edges

√6.3  
Unless Otherwise Indicated

EXEPT OTHER INDICATION General tolerances to be respected : ISO 2768 : m & k Welding : v Sheet Metal : v Mould : ISO 8062 Surface texture : ISO 1302 Welding Symbols : ISO 2553	WA +10	-	17/03/2016	FX10394	Creation du document			
	Mod	Date	By	Modifications				
CAUTION : All dimensions are in millimeters and projected view in ISO std	Reference Number						Mass (Kg) :	0.714
	<b>VERROU COTE POINTE</b>							
<b>21637-00810-MPE</b>						Rev : -		
Drawing Number								
DTM Class : 2-01-07		DTE Class : ...		D3		Sheet :		
Size : A3		Scale : 1:1		Units : mm		SolidWorks 2012		
						<b>1/1</b>		

Material :  
**Steel 42 CrMoS4 or AISI 4140**  
 Heat treat (quench and temper) to tensile strength of Rm 800 - 1100 MPa.

Heat treatment :  
 Everywhere

Protection of surf :

Toute copie imprimée de ce document n'est pas gérée  
 Propriété exclusive de notre société. Reproduction  
 ou utilisation interdite sans notre accord écrit.  
 Any printed copy of this document is not managed  
 Exclusive property of our company. Reproduction  
 or prohibited use without our written agreement.

1 2 3 4 5 6