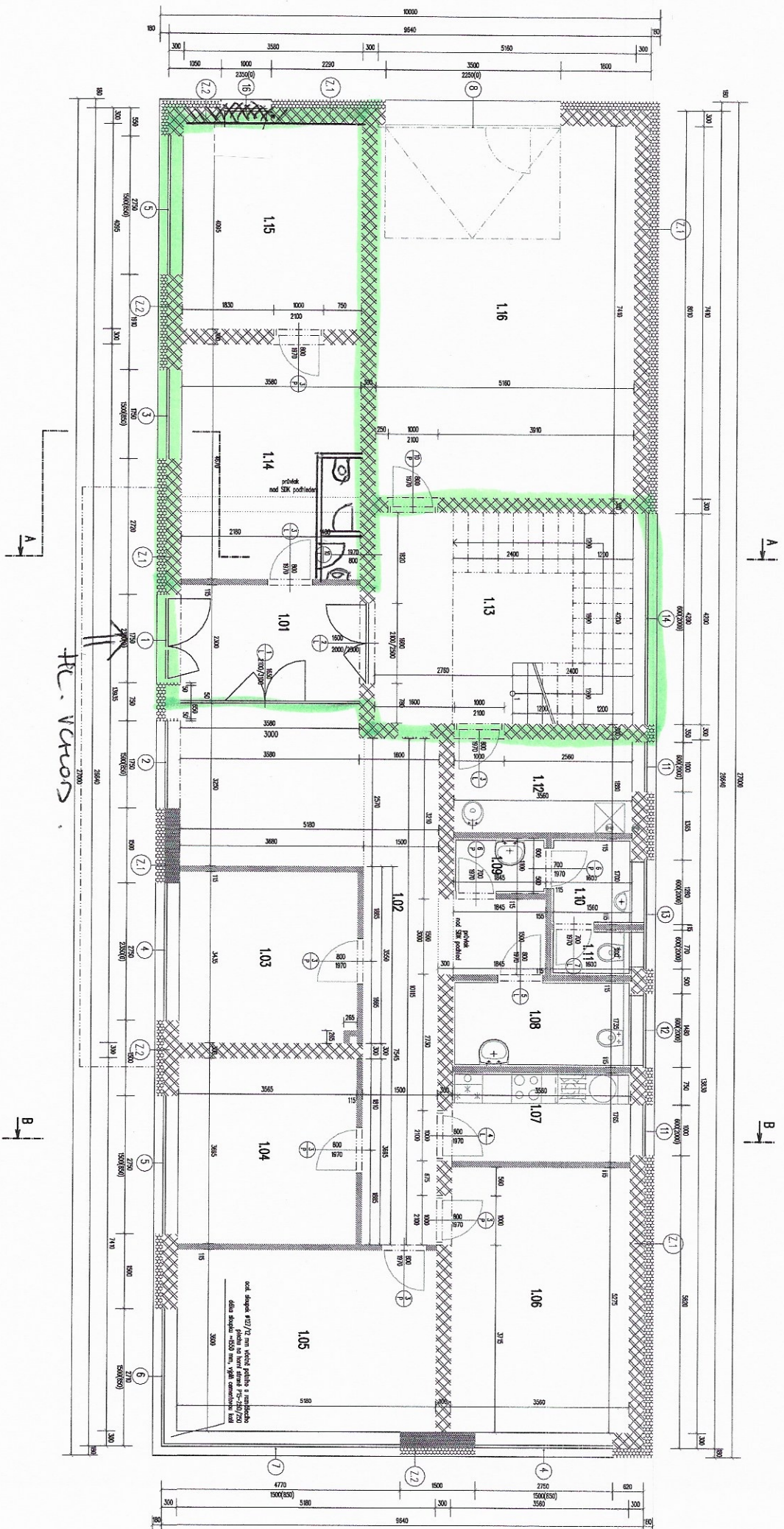


1. NP - POUZE ZELENA



HC. VCHOD

- 1.13
- 1.01
- 1.14
- 1.15
- 1.16
- 1.12
- 1.10
- 1.08
- 1.07
- 1.06
- 1.05
- 1.04
- 1.03
- 1.02
- 1.01
- 1.14
- 1.15
- 1.16

- KANAL - 21,8 m² (VIVYL)
 - STODBA - 6,8 m² (DVAZBA)
 - DVAZBA - 19 m² (STODBA)