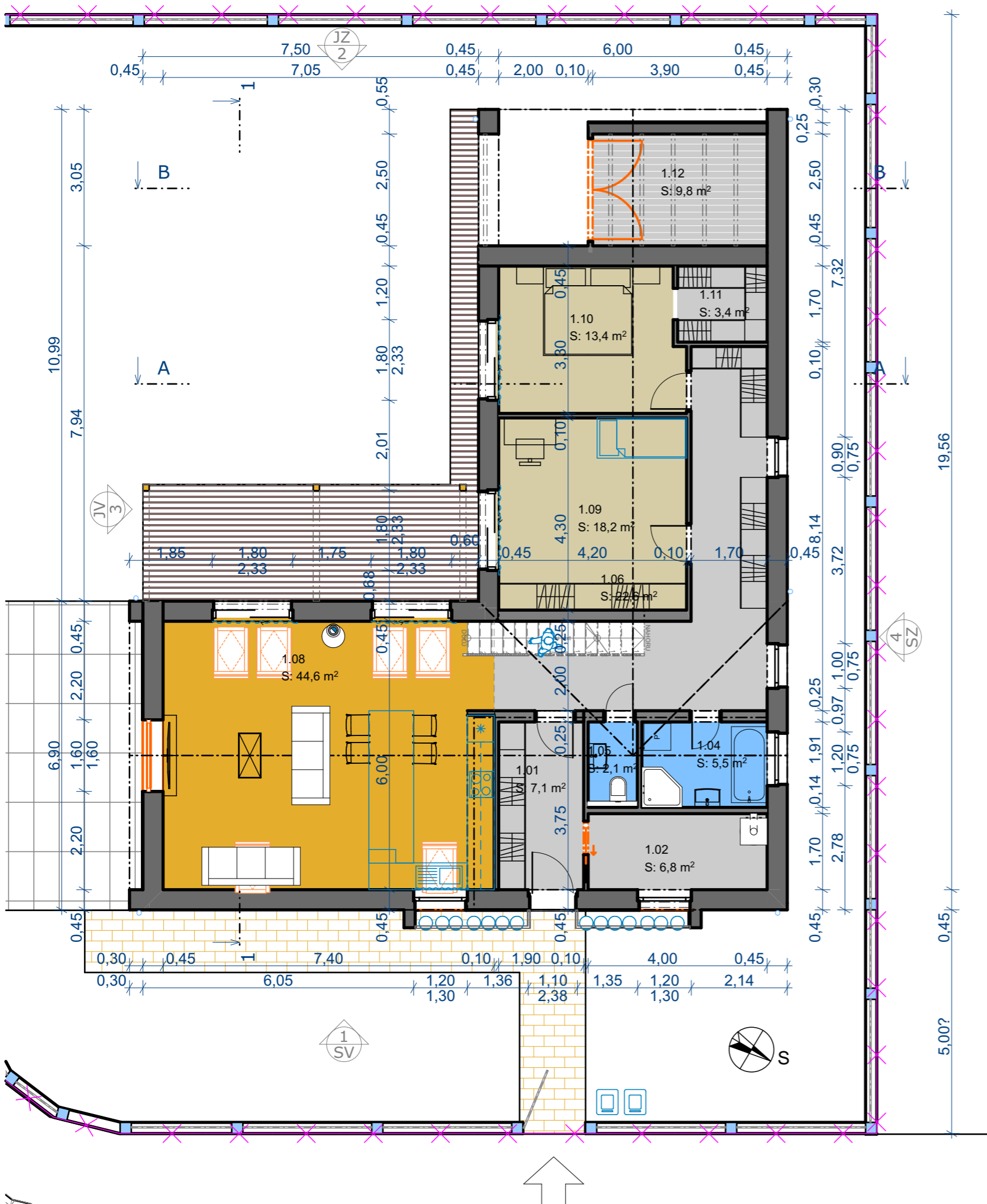

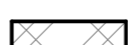
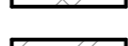
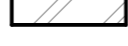
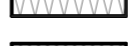





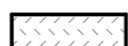




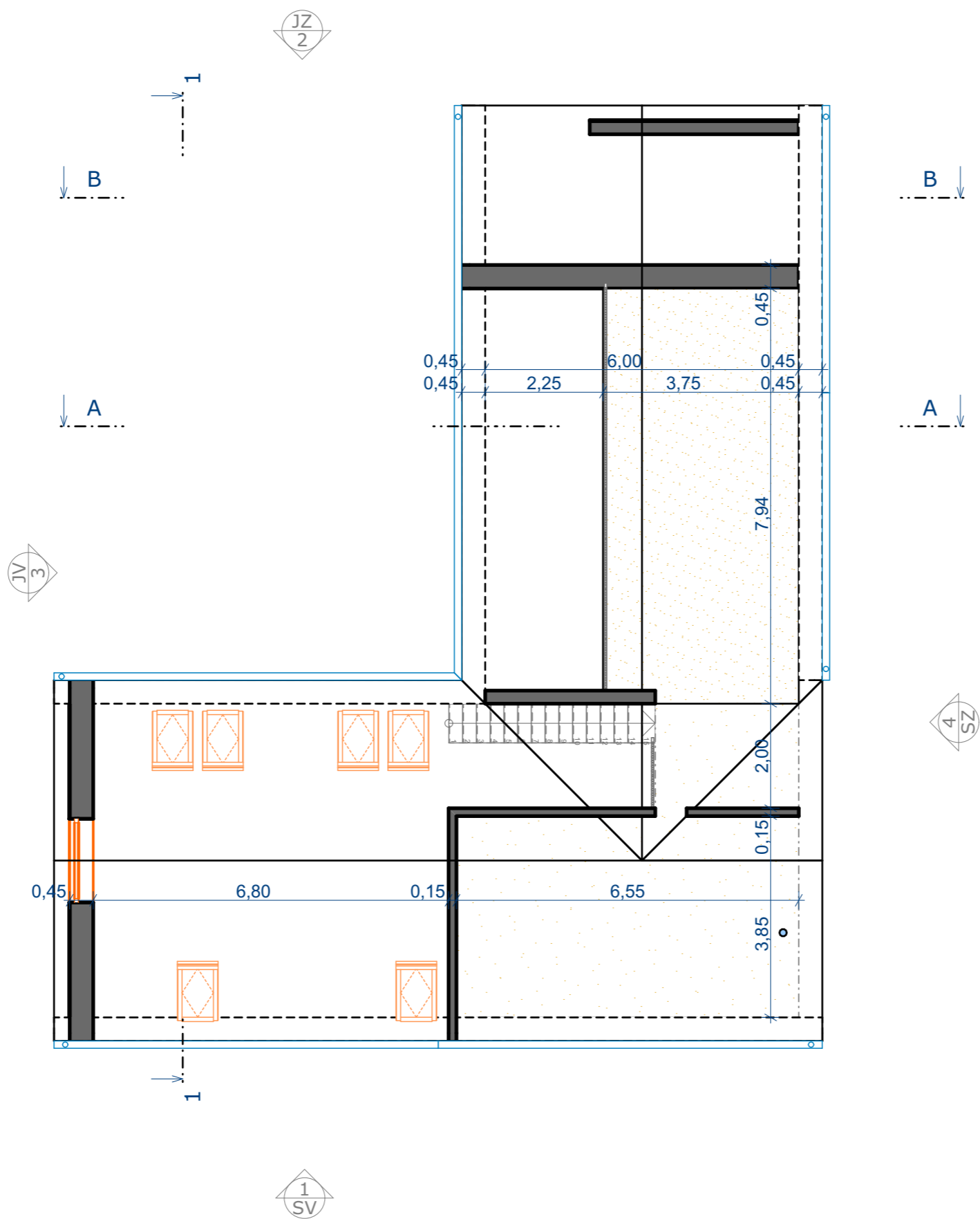
Tabulka miestností 1.NP

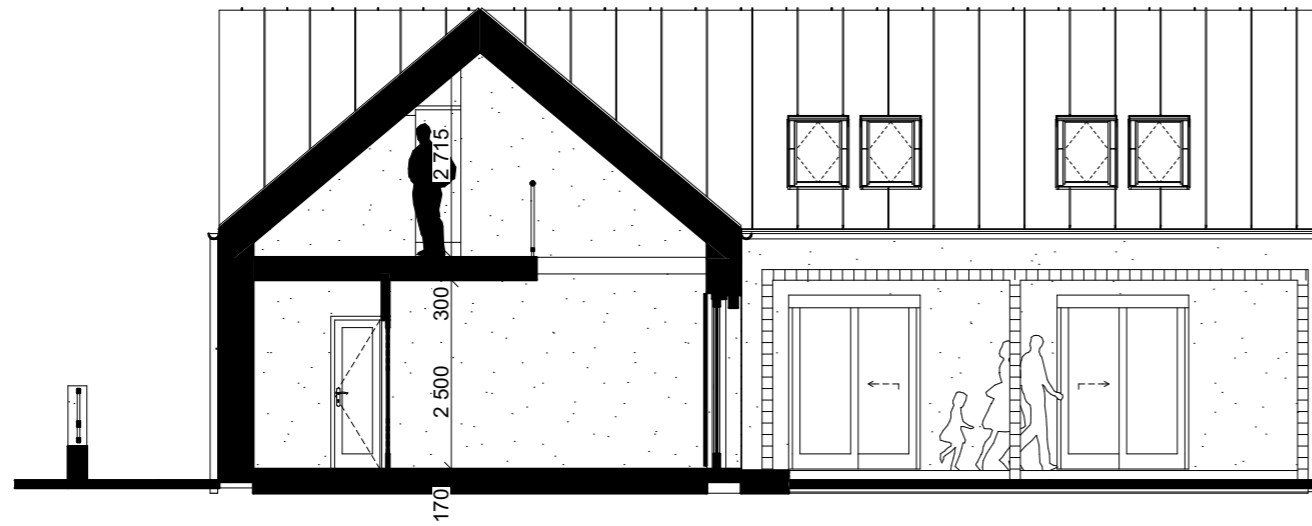
Č.m	Název miestnosti	Plocha (m ²)	Nášlapná vrstva
1.01	Zádvrie	7,13	Parkety
1.02	Tech. m.	6,80	Parkety
1.04	Kúpeľňa	5,46	Keramická dlažba
1.05	WC	2,10	Keramická dlažba
1.06	Chodba	22,64	Parkety
1.08	Obývačka s kuchyňou	44,59	Parkety
1.09	Izba	18,16	Parkety
1.10	Spáľňa	13,43	Parkety
1.11	Šatník	3,40	Parkety
1.12	Garáž	9,75	Parkety
		133,46 m ²	

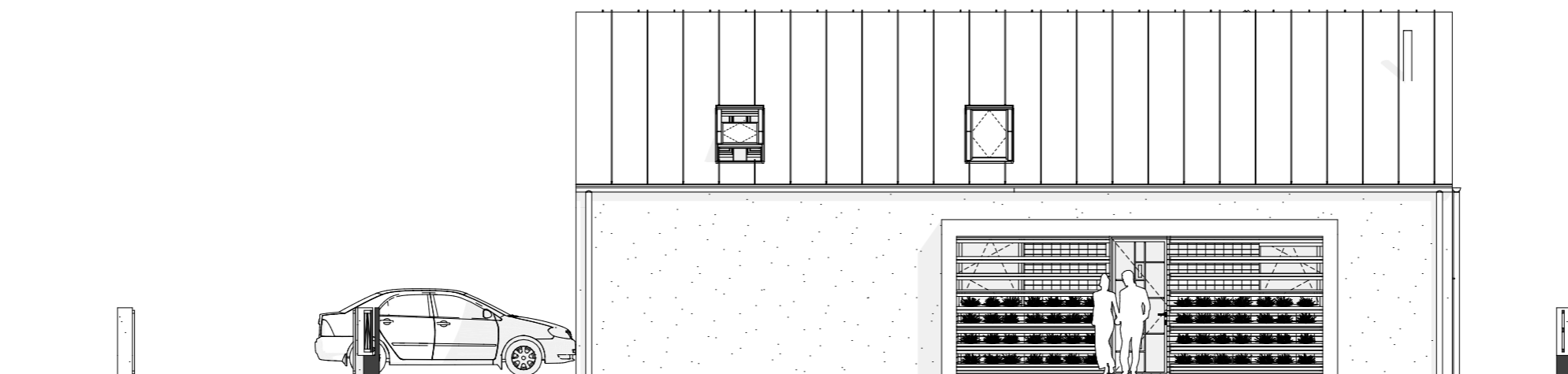


LEGENDA MATERIÁLOV

-  OBVODOVÉ NOSNÉ STENY Z TVÁRNIC HELUZ FAMILY 30 BRÚSENÁ HR. 300 mm, S MALTOU NA CELOPLOŠNÚ TENKÚ ŠPÁRU
 $\lambda = 0,093 \text{ W/(m.K)}$; $U = 0,29 \text{ W/(m}^2\text{.K)}$, $R_2 = 3,22 \text{ (m}^2\text{K/W)}$, rozmer 300x247x249(šxdxv)
-  VNÚTORNÉ NOSNÉ MURIVO Z TVÁRNIC HELUZ PLUS HR. 250 mm, NA LEPIDLO ROZMER 250x375x249(šxdxv)
-  PRIEČKY Z TVÁRNIC HELUZ HR. 100 mm NA LEPIDLO
-  XPS POLYSTYRÉN HR. 200 mm
 $\lambda = 0,034 \text{ W/m.K}$
-  MINERÁLNA VLNA, $\lambda = 0,039$ resp. $0,036 \text{ W/m.K}$
-  ŠTRKOVÝ NÁSYP FR. 4/8; 16/32; 32/63 mm
-  PROSTÝ BETÓN
-  VYSTUŽENÝ BETÓN
-  PÔVODNÁ ZEMINA
-  ZEMINA NASYPANÁ ZHUTNENÁ NA ÚNOSNOSŤ 0,25 MPa
-  DEBNIACE TVÁRNICE HR. 250 mm ZALIATE BETÓNOM
-  OBKLAD CETRIS PROFIL HR. 25 mm NA ZVISLOM ROŠTE HR. 50 mm
-  FASÁDNA IZOLÁCIA ISOVER EPS 70F HR. 150 mm,
 $\lambda = 0,038 \text{ W/m.K}$







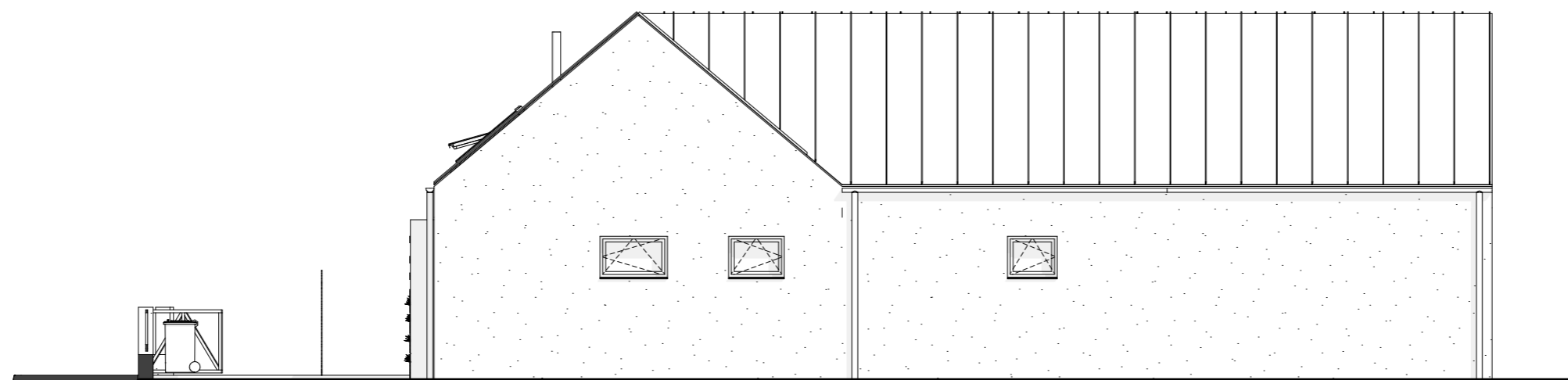
SV
1:100



JZ
1:100



JV
1:100



SZ
1:100