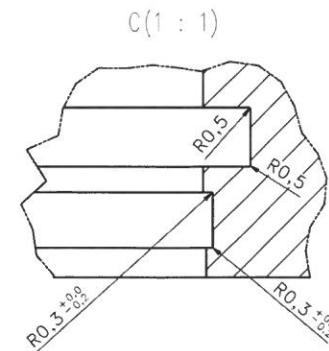
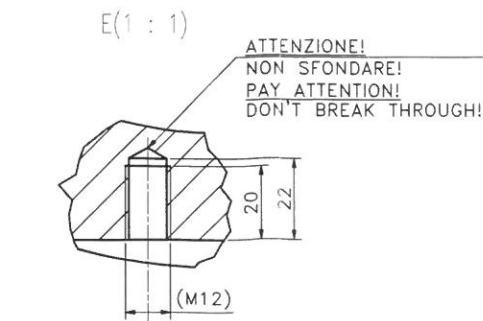
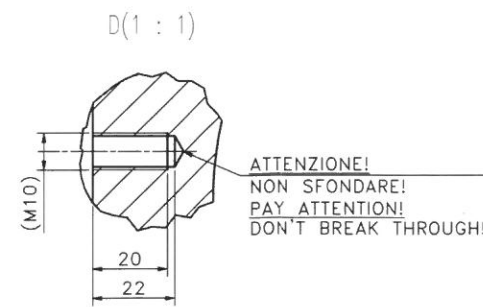
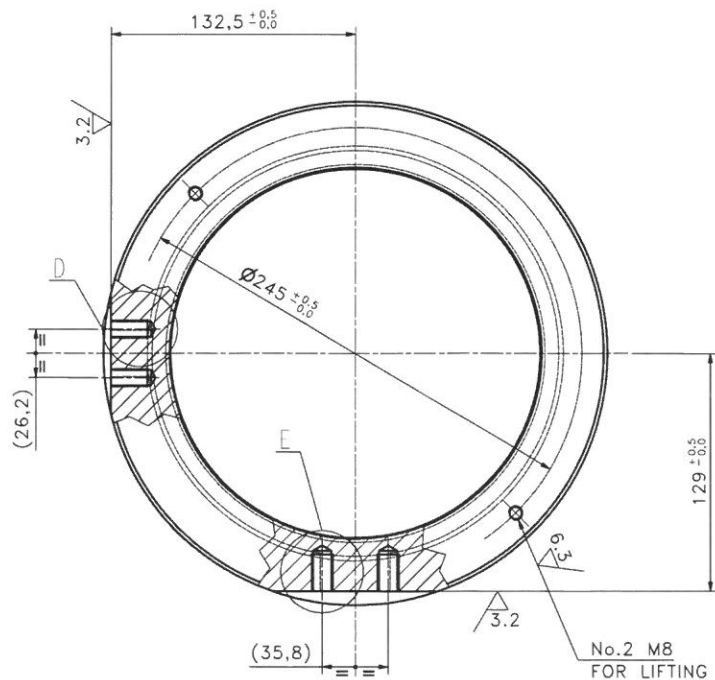
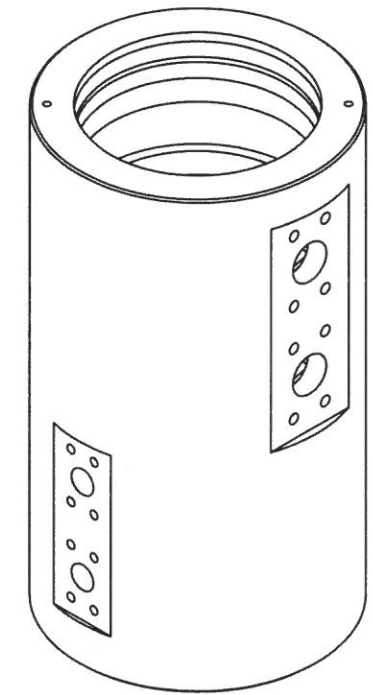
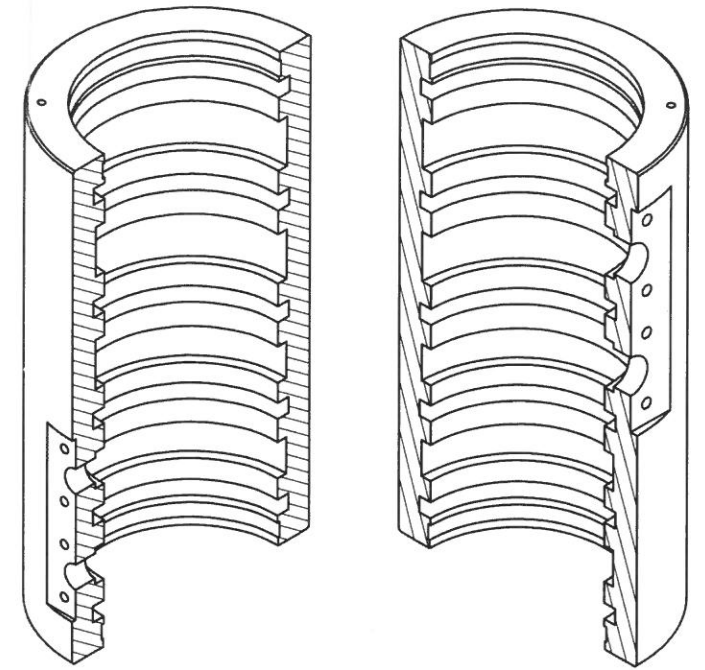
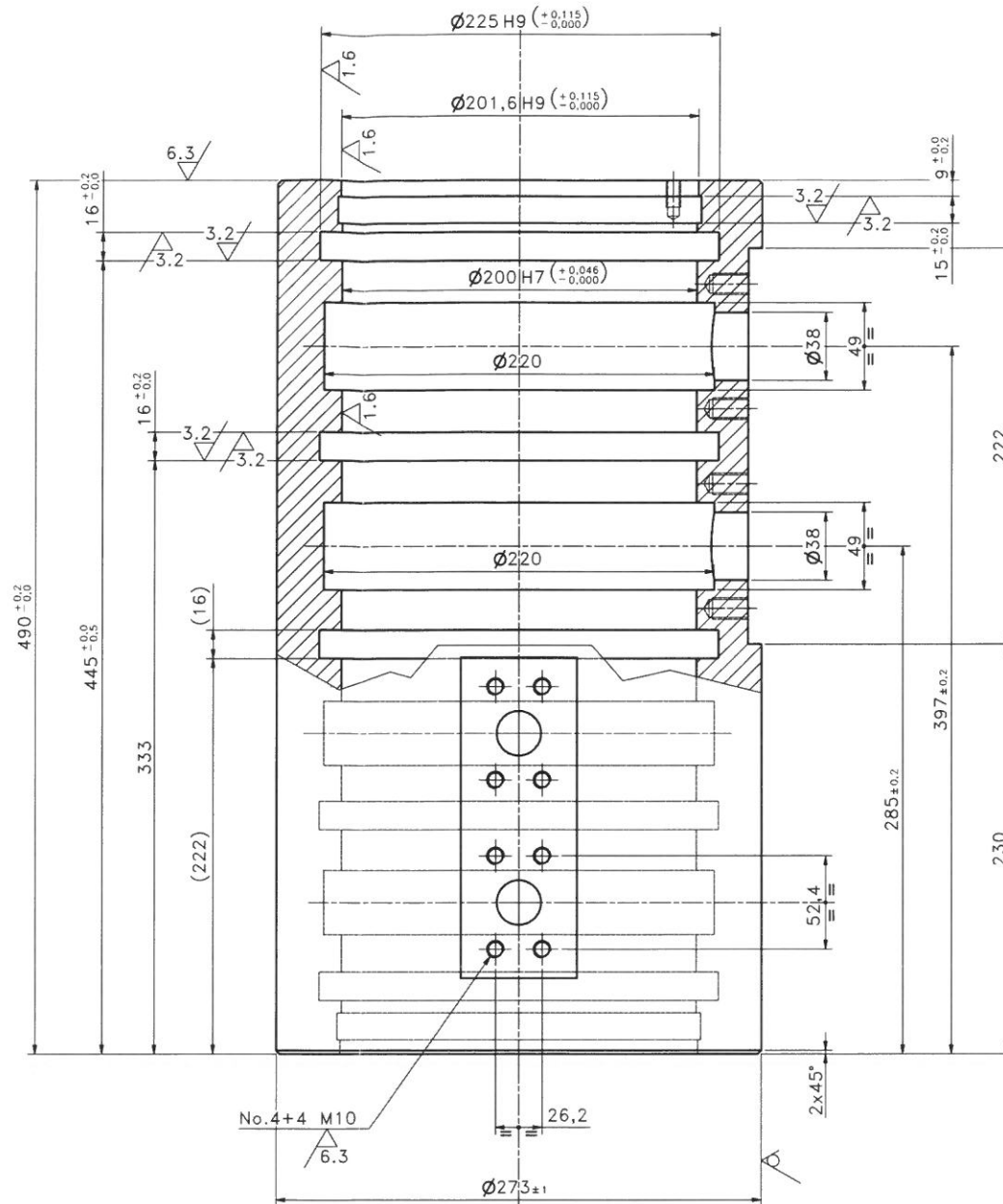
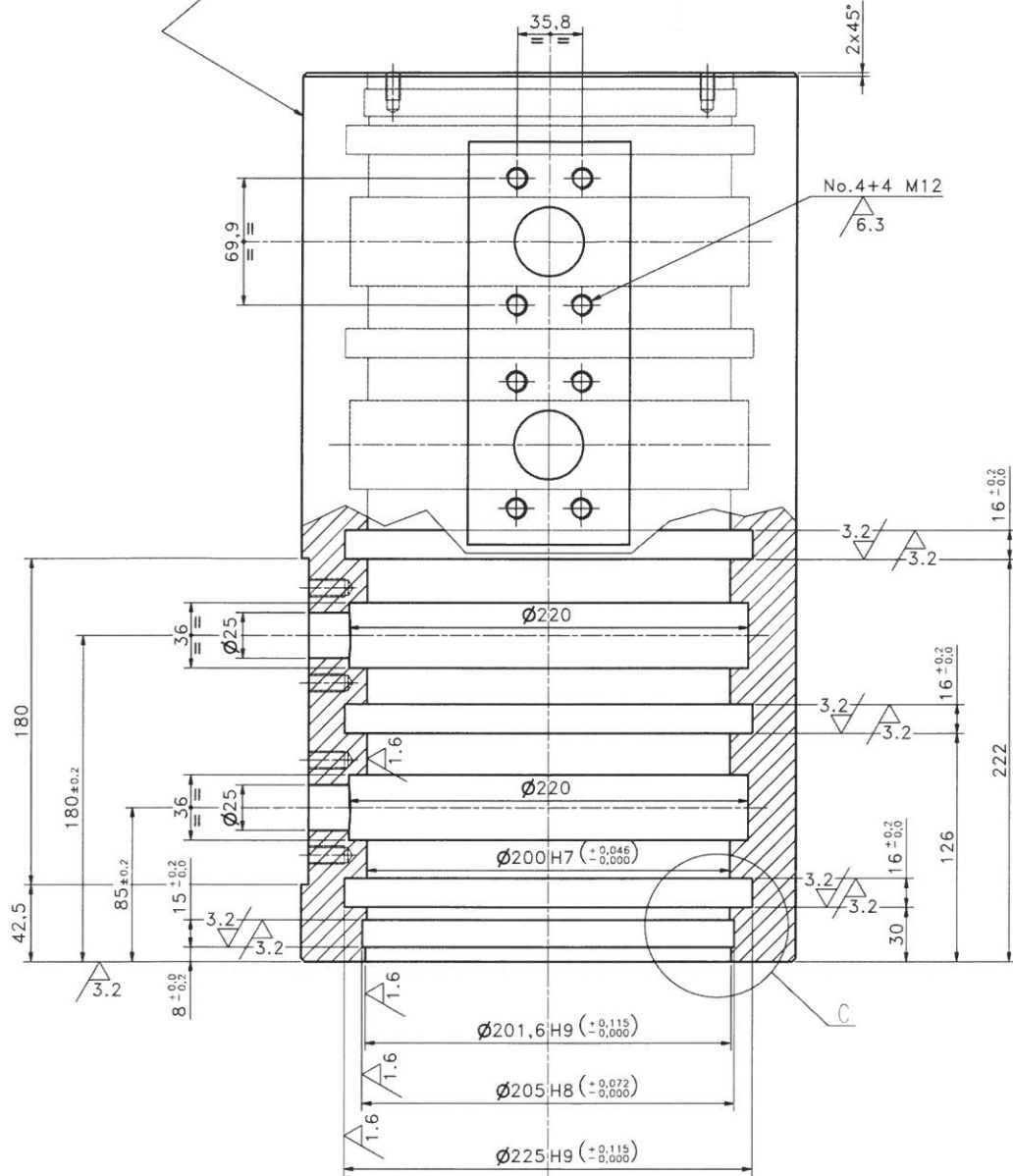


RICAVARE DA TUBO Ø273x45  
OBTAIN FROM PIPE Ø273x45  
UNI EN 10220



- **ATTENZIONE: FORATURE PER CIRCUITO IN PRESSIONE (160 bar)**
- **ALLEGARE I SEGUENTI CERTIFICATI:**
  - # COMPOSIZIONE CHIMICA
  - # CONTROLLO AD ULTRASUONI (CL.3 - EN10228/3)
- **PAY ATTENTION: DRILLINGS FOR CIRCUIT UNDER PRESSURE (160 bar)**
- **ALLEGARE I SEGUENTI CERTIFICATI:**
  - # CHEMICAL COMPOSITION
  - # ULTRASONIC TESTING (CL.3 - EN10228/3)

										SMS group	
NO. 10.13	EMESSO - ISSUED	MICHELLI	MI	SMS	SHELL	SPILL	SA 200	1	1		
REV. DATA	DESCRIZIONE - DESCRIPTION	DRAWN	CHECKED	APPROVED	MATERIAL	MECHANICAL					
1x45	0.5	CH.P. FORGING	ISO 2768 - mH	WELDED STRUCTURES	ISO 15920 - BF	C45E+N	EN 10083				
OBJ.	CAMICIA PLAST									COMMISSA - JOB	
FIG.	JACKET									2 kusy	
NO. DISEGNO - DRAWING	81.021.07/402.01	POS-ITEM	102	SCALE	1:2.5	Peso - Mass	88,50 kg	RIF. DIS. - REF. DRAW.		POS. - TR.	
Ricevuto da - Obtained from:	1.314.0097/402.01									N. Modello Fusione - Casting Pattern	

12.5 / (6.3 / 3.2 / 1.6) ✓