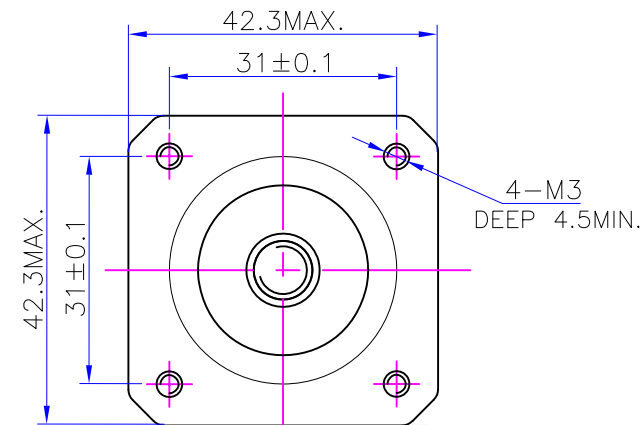
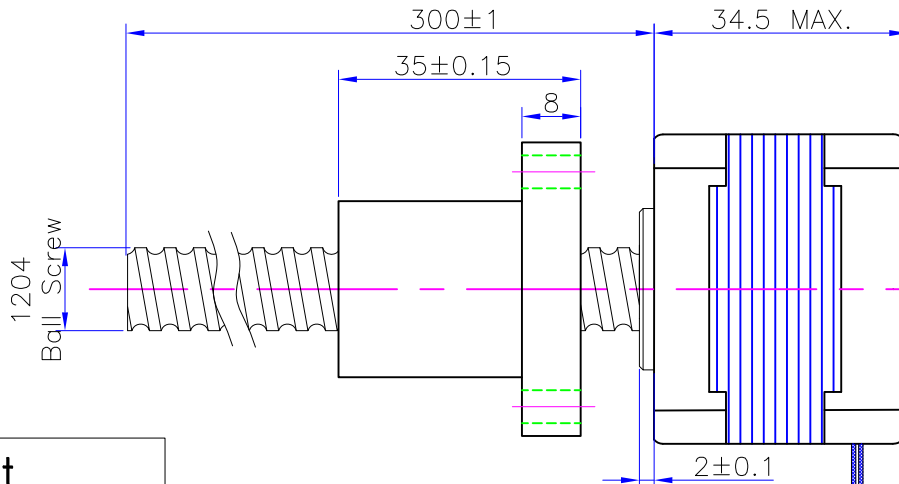
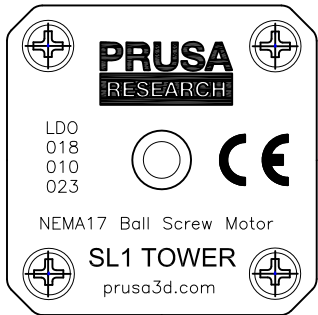
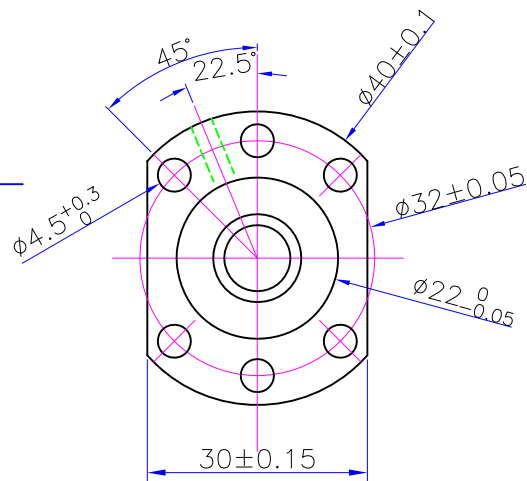


Label by laser print on back side. (printing be centered, font per printing file)

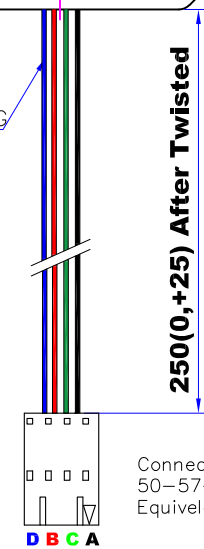
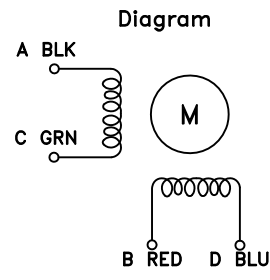


### Ball Screw Nut



Lead	4 mm
Diameter	12 mm
Ball Diameter	2.381 mm
Bead Circuit Number	4
Stiffness	12kgf/μm

UL1007 24AWG twisted cable  
电线绞起来



Items	Specs	Items	Specs
Phase Number	2 Phases	Step Angle/Length	1.8° ± 0.09° /0.02mm
Rated Voltage	DC 7V	Rated Current	DC 1.0A / Phase
Resistance(20°C)	7 × (1 ± 15% Ω) ohm	Inductance	15 × (1 ± 20%) mH
Push Force	≥ 18Kg (176N)	Detent Torque	20 mN.m
Rotate Direction	ACBDA CW	MAX Starting PPS	≥ 800 PPS
MAX slewing PPS	≥ 1600 PPS	Insulation Resistance	≥ 100 MΩ (DC 500V)
HI POT	AC600V/1mA/1S	Insulation Class	B
Rotor Inertia	230 g.cm <sup>2</sup>	Weight	0.55 Kg REF.

A	---	New Release	XuSD	J.B.	10/23/18
REV	ECN	Description	Made	Appr	Date
		View			
		Scale	1:1		
		<b>LDO MOTORS CO.,LTD</b> <b>Ball Screw Linear Stepper</b> <b>LDO-42STH34-1004LB300E(SL1)</b>			
Des	Check	Appr	Date	Factory Code	page