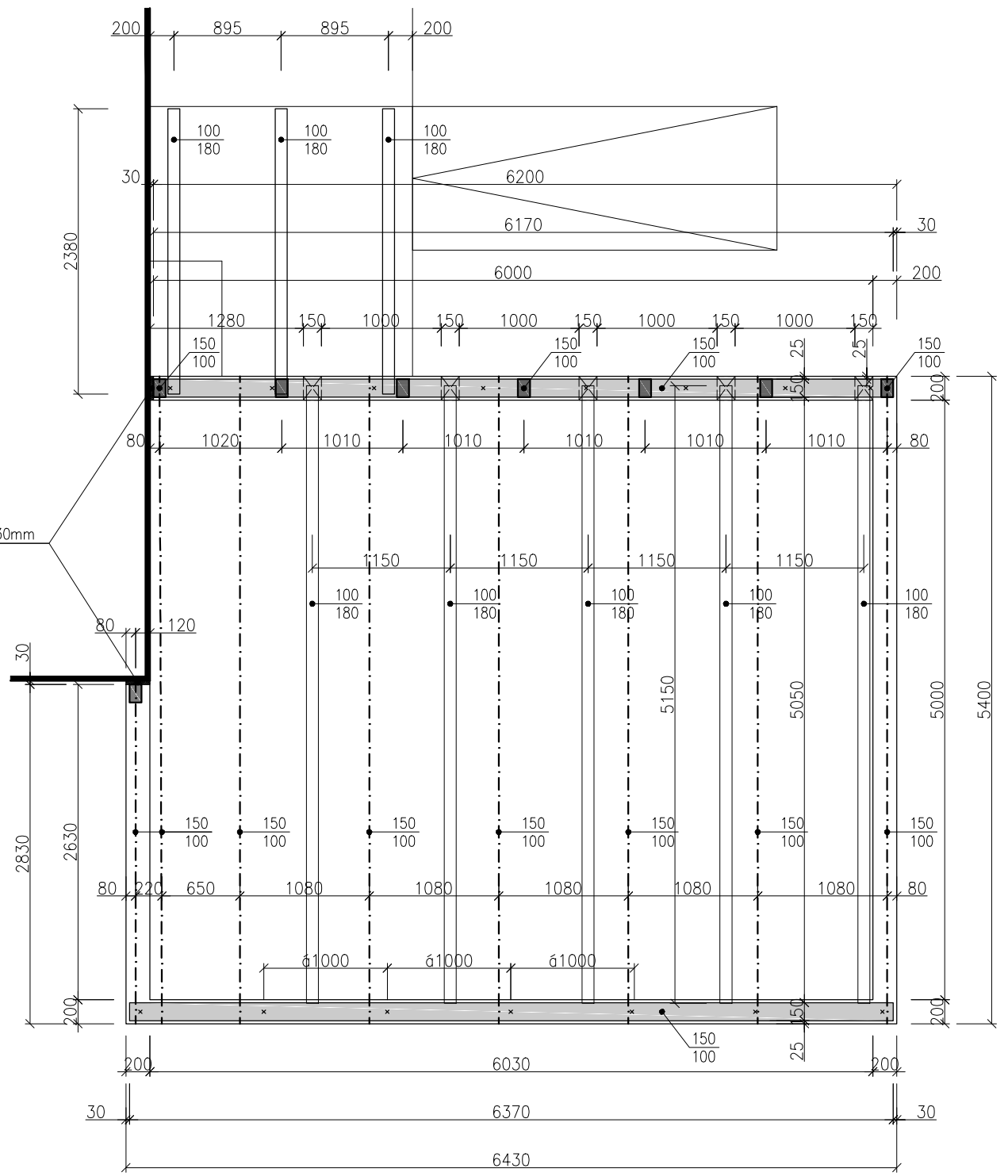
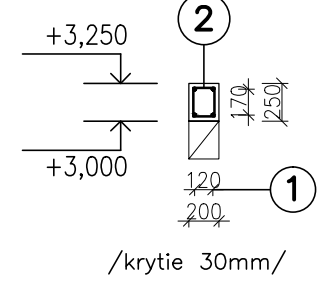


PODORYS



VÝKRES_KROVU

Veniec - V1 20,680 bm



- ① $\frac{2770}{2+2\phi R12/m - 2770 \text{ mm} - 4 \text{ ks}}$
- ① $\frac{6370}{2+2\phi R12/m - 6370 \text{ mm} - 4 \text{ ks}}$
- ② $\frac{140 \times 70}{190 \times 140} 5\phi R8/m-800-KS 90$
- ① $\frac{5340}{2+2\phi R12/m - 5340 \text{ mm} - 4 \text{ ks}}$
- ① $\frac{6140}{2+2\phi R12/m - 6140 \text{ mm} - 4 \text{ ks}}$
- ③ $\frac{600 \times 600}{5\phi R12/m - 1200 \text{ mm} - 18 \text{ ks} / \text{previazanie rohov/}}$