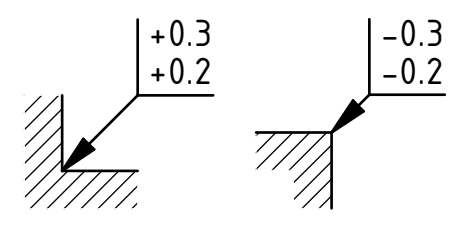
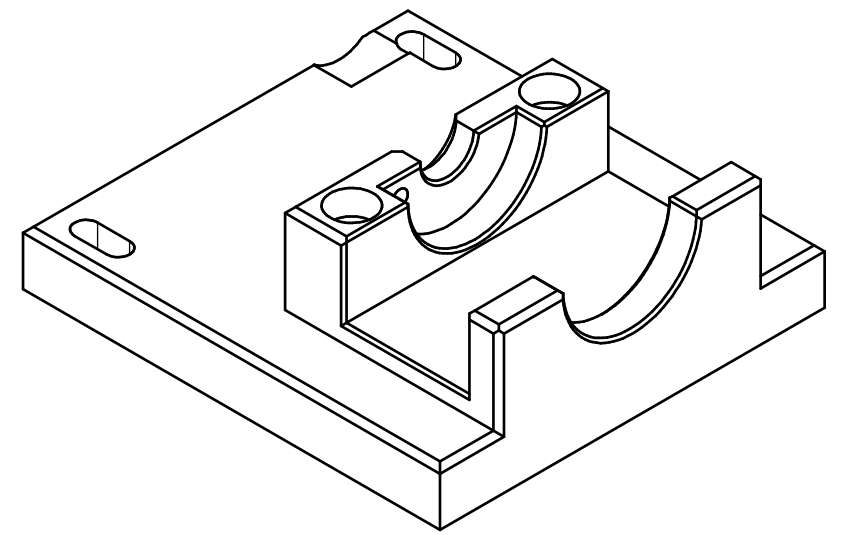
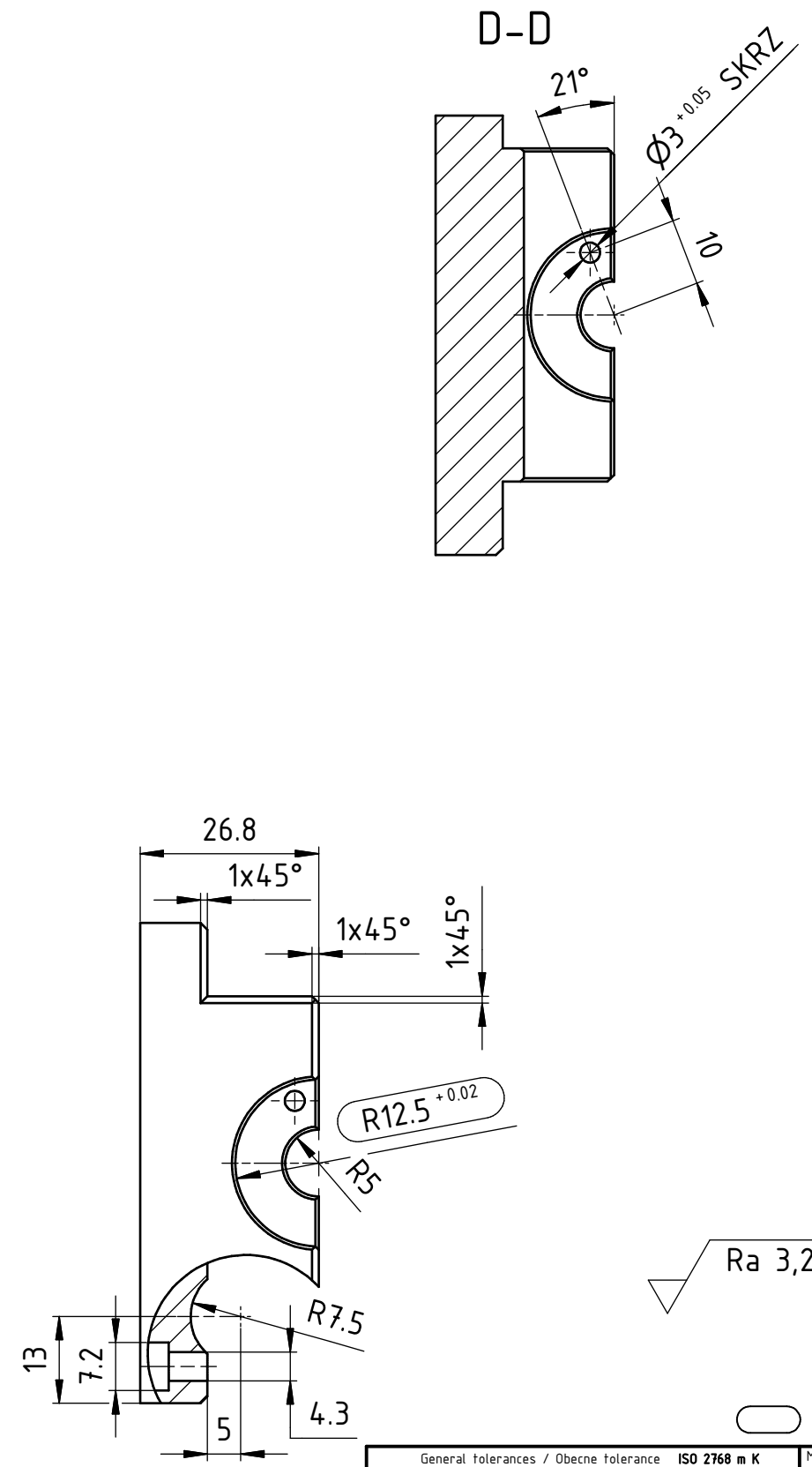
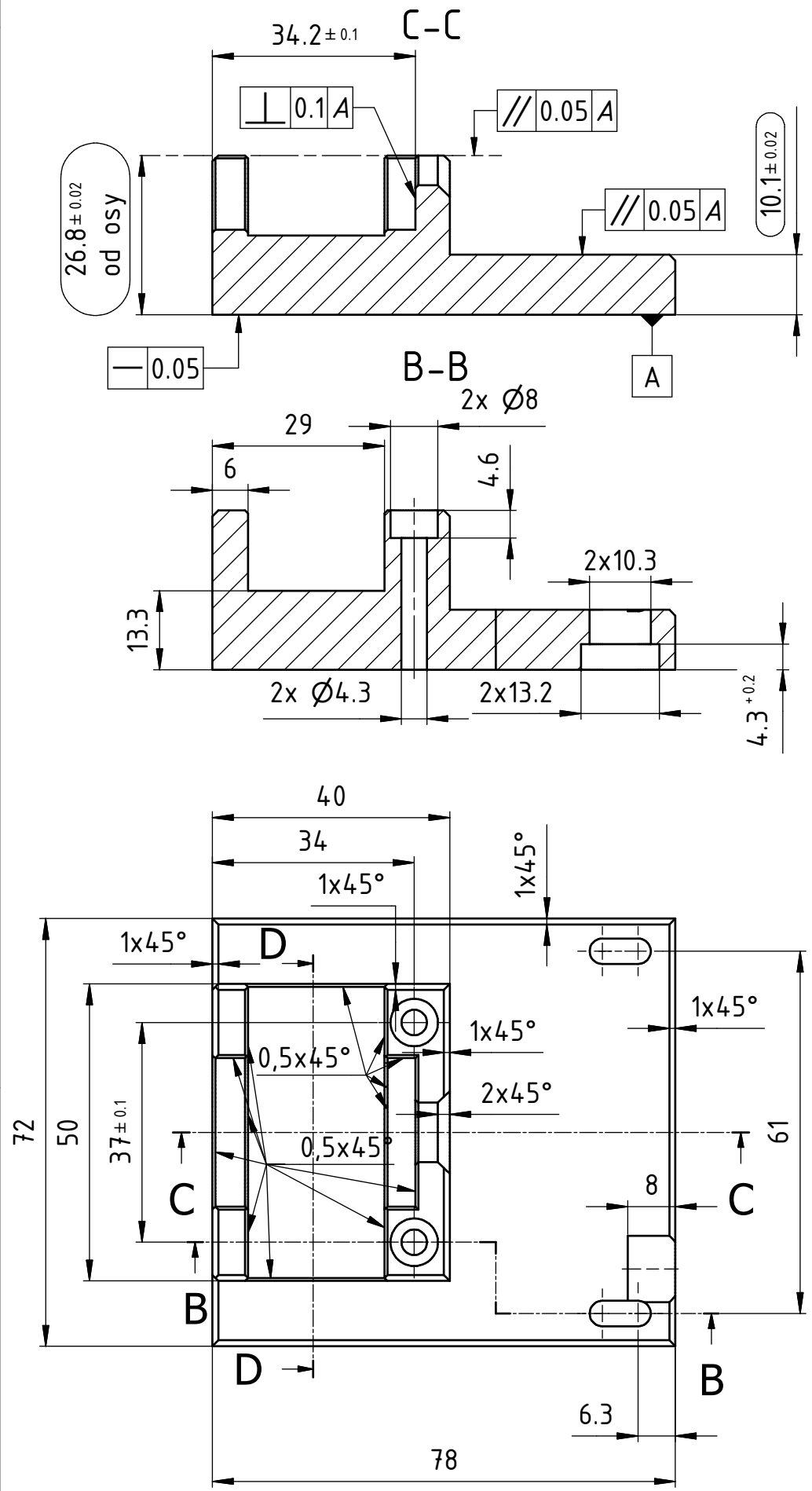


Copying this document, giving it to others and the use or communication of the contents, are forbidden without express authority. Offenders are liable to the payment of damages. All rights are reserved in the event of the grant of patent or the registration of an utility model or design.



Undefined edges according to DIN ISO 13715  
Nedefinované hrany podle DIN ISO 13715

⬭ Takto označený rozměr je důležitý pro správnou funkci

General tolerances / Obecné tolerance ISO 2768 m K								Material: PA6 černý		Projection	
Lenght/Delka		Rad., Cham./Zaob., Zkos.		Angle/Uhel		Raw material: Polotovary:		Component description Popis součásti		Replacement for: Zamena za:	
fr./od	to/do	toler.	fr./od	to/do	toler.	fr./od	to/do	toler.	Mass: Hmotnost: N/A		<b>Přípravek QG</b> Drawing Nr.: MFGM00000029 Císlo vykresu: MFGM00000029 Cust. Drawing Nr.: Zakazn. cislo vykresu:
0.5	6	±0.1	0.5	3	±0.2	0	10	±1°	Partlist Kusovník		
6	30	±0.2	3	6	±0.5	10	50	±0°30'	Rev.: 1		
30	120	±0.3	6	-	±1	50	120	±0°20'	Date / Datum: 8.4.2019		
120	400	±0.5	-	-	-	120	400	±0°10'	Name / Jmeno: J. Taufer		
400	1000	±0.8	-	-	-	400	-	±0°5'	Page: Strana: 1 of 1		
Scale: Meritko: 1:1 File name: MFGM00000029.idw Sheet format: A3								IMI Precision Engineering		Drawing Nr.: MFGM00000029 Císlo vykresu: MFGM00000029 Cust. Drawing Nr.: Zakazn. cislo vykresu:	