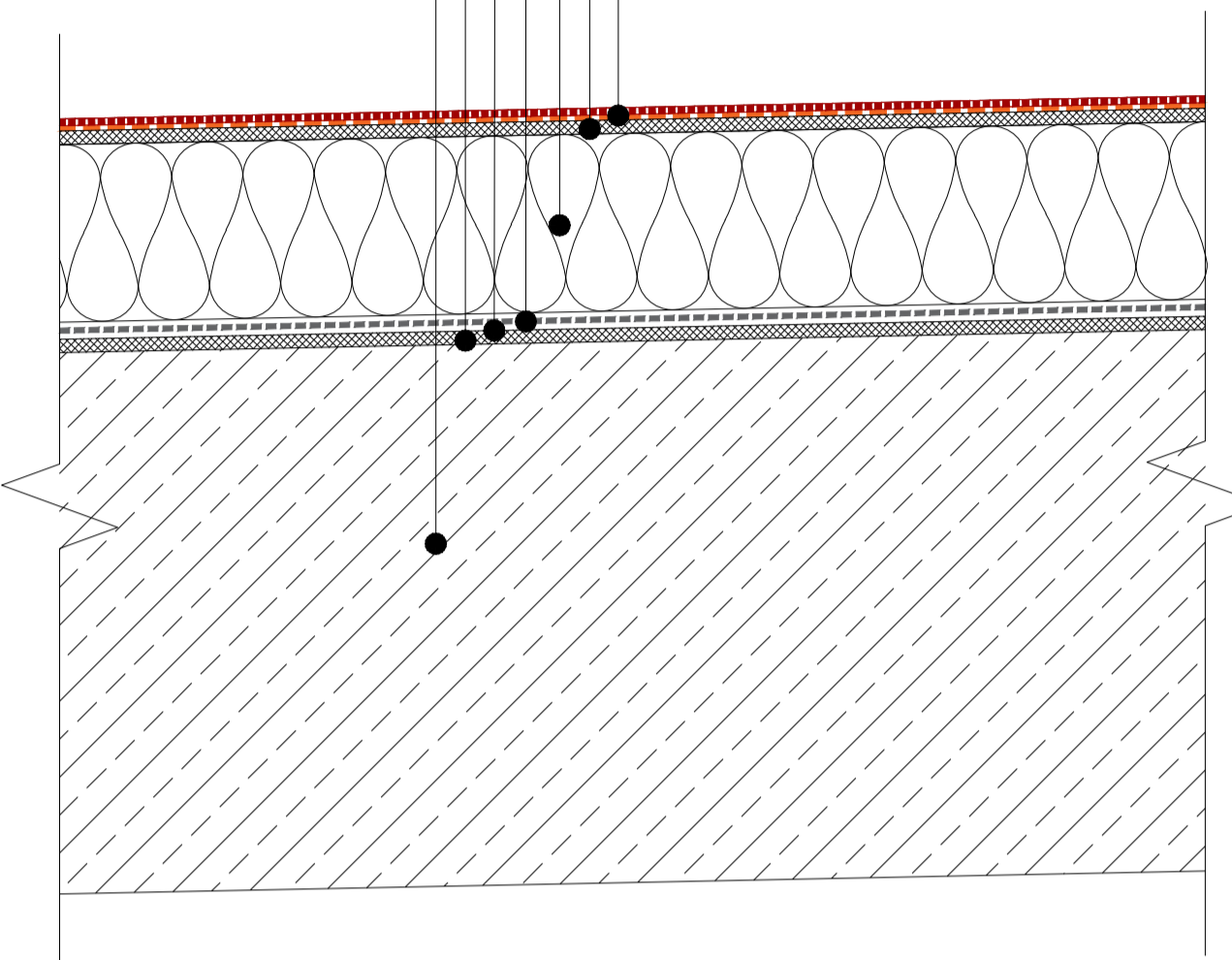
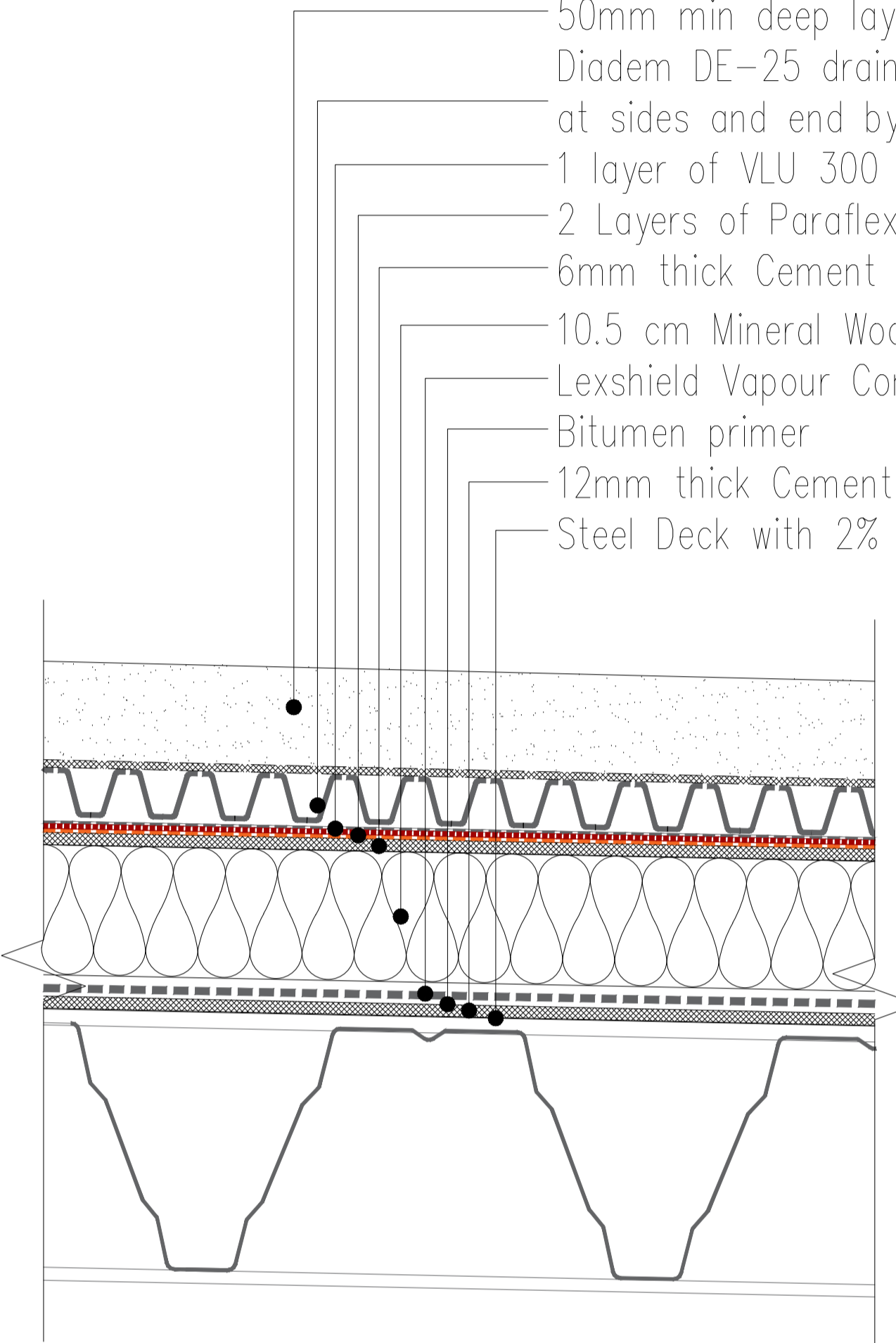


2 Layers of Paraflex Bitumen membrane  
 6mm thick Cement Protection Board  
 10.5 cm Mineral Wool Insulation to meet 0.36w/m<sup>2</sup>k  
 Paraflex Vapour Control Layer  
 Bitumen primer  
 12mm thick Cement Protection Board  
 Concrete deck with 2% slope



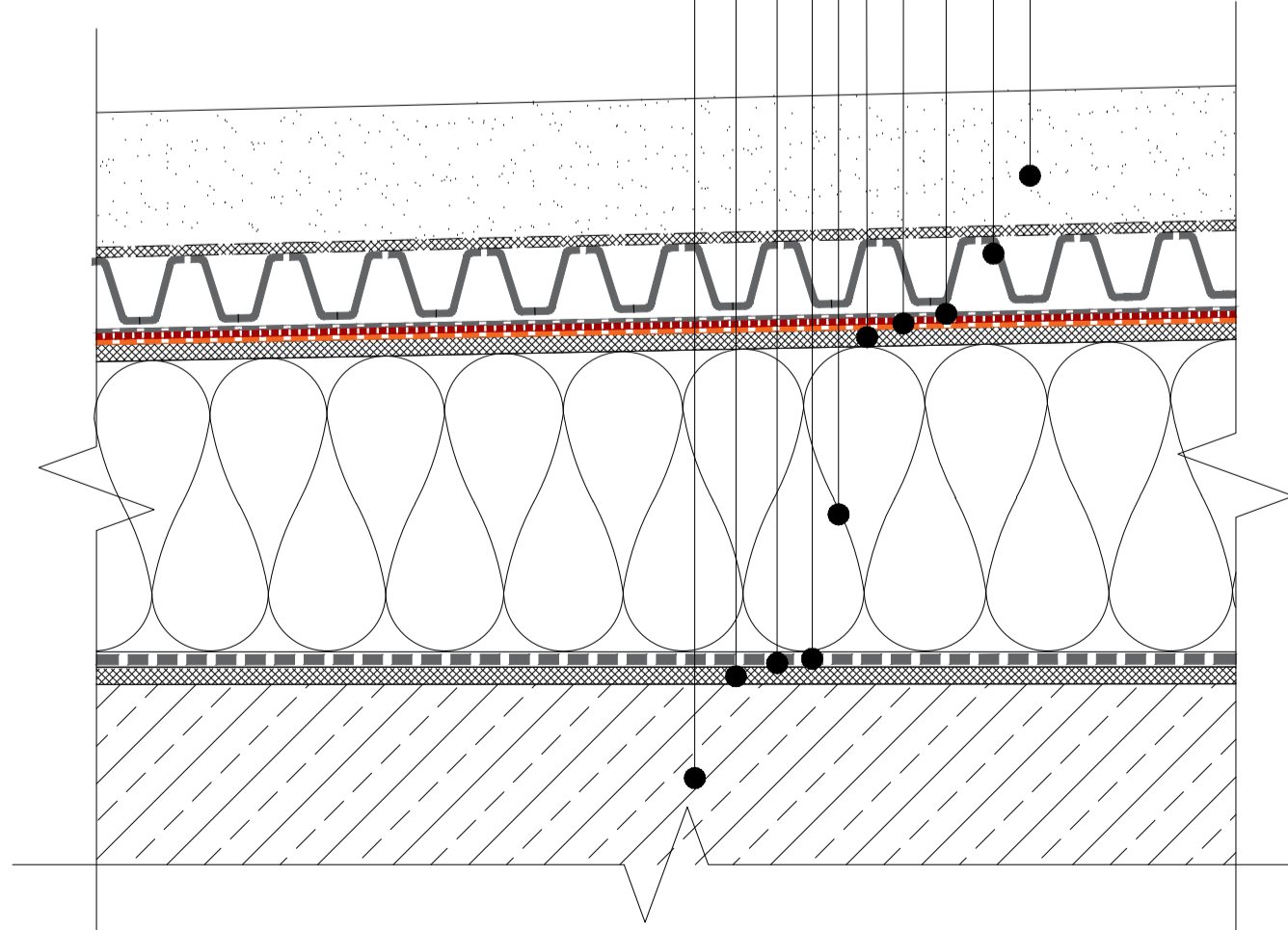
**1 BUILDUP TYPE 1**  
 Scale: NTS

50mm min deep layer of standard extensive growth substrate  
 Diadem DE-25 drainage and reservoir board to be overlapped at sides and end by one row  
 1 layer of VLU 300 Separation Fleece  
 2 Layers of Paraflex Bitumen membrane  
 6mm thick Cement Protection Board  
 10.5 cm Mineral Wool Insulation to meet 0.36w/m<sup>2</sup>k  
 Lexshield Vapour Control Layer  
 Bitumen primer  
 12mm thick Cement Protection Board  
 Steel Deck with 2% slope



**2 BUILDUP TYPE 2**  
 Scale: NTS

50mm min deep layer of standard extensive growth substrate  
 Diadem DE-25 drainage and reservoir board to be overlapped at sides and end by one row  
 1 Layer VLU 300 separation fleece  
 2 layers of Paraflex bitumen membrane  
 6mm thick Cement Protection Board  
 200mm tapered Mineral Wool Insulation to meet 0.19w/m<sup>2</sup>k  
 Paraflex Vapour Control Layer  
 Bitumen Primer  
 12mm thick Cement Protection Board  
 Concrete deck with 2% slope



**3 BUILDUP TYPE 3**  
 Scale: NTS

**LEGENDE / LEGEND**

**TÜRSTEMPELN / ROOM STAMP**

**MATERIALÜBERSICHTSPLÄNE / OVERVIEW OF MATERIALS / FINISHES**

**MATERIALANGABEN / MATERIAL SPECS**

**SYMBOLS / SYMBOLS**

**ABKÜRZUNGEN DURCHBRÜCHE / ABBREVIATIONS OF TYPES OF PENETRATION**

**ALLGEMEINE ABKÜRZUNGEN / ABBREVIATIONS IN GENERAL**

**FEUERWIDERSTANDSKLASSEN / FIRE CLASSIFICATION ACCORDING TO DIN EN AND DIN**

**SCHALLSCHUTZANGABEN / COMMENTS TO SOUND INSULATION SPECIFICS**

**BEMERKUNGEN / COMMENTS**

**VERWEIS / INDEX / PLAN CHANGES**

**SCHUTZPLAN / PROTECTION SEE FOUNDATION PLANS**