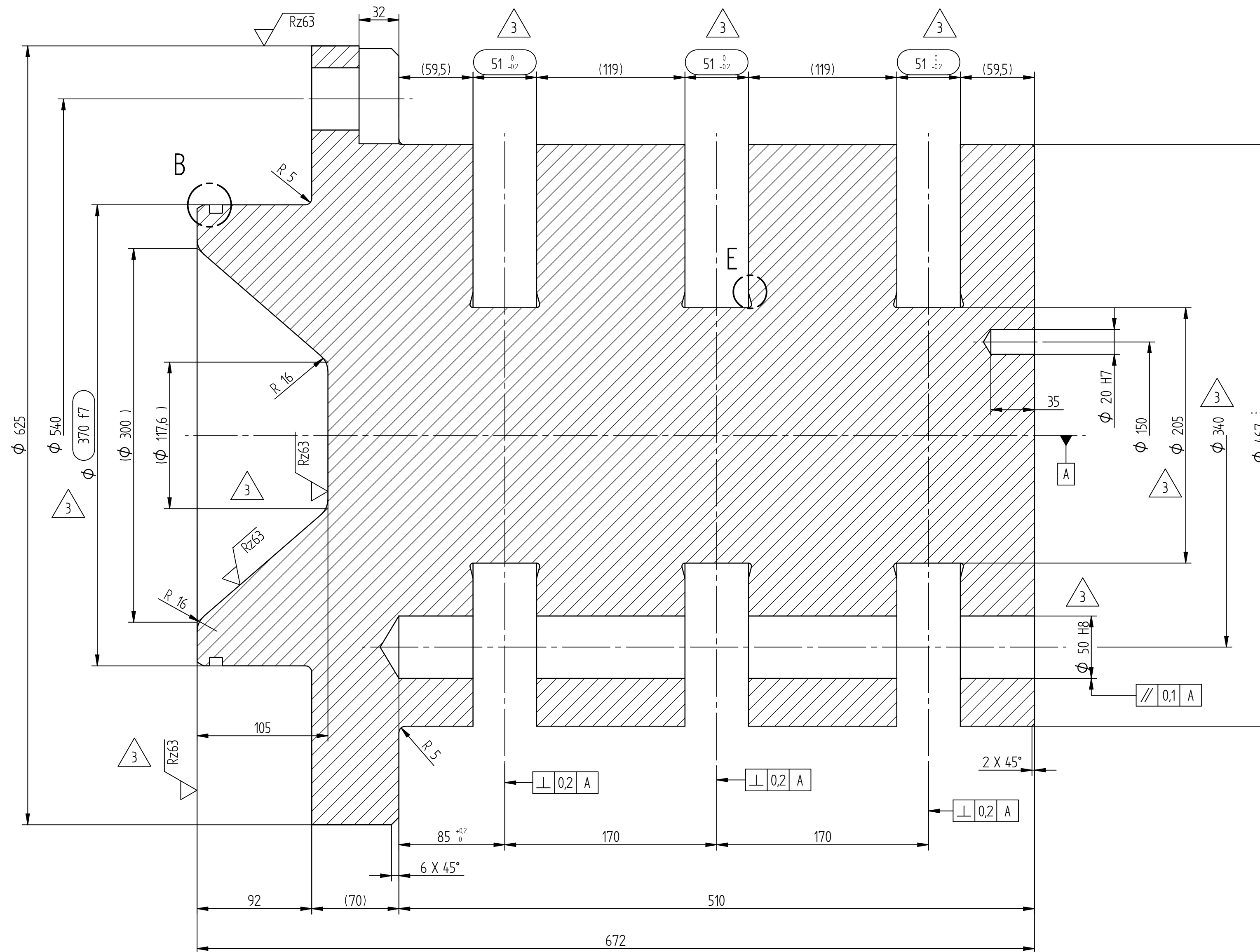


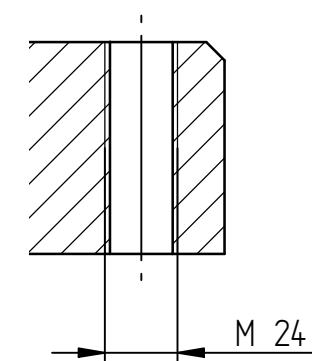
SECTION A-A



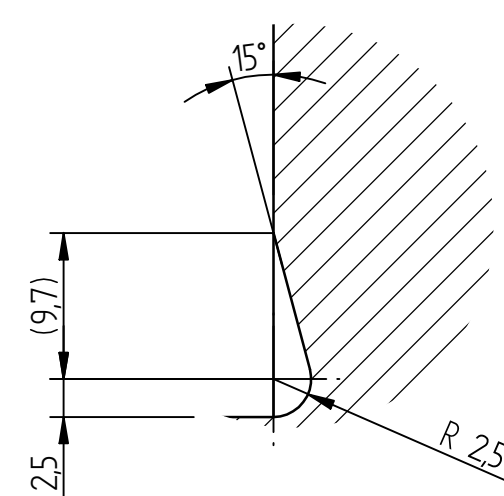
allseitig Fasen 0,5 x 45°
all-round chamfer 0,5 x 45°

Rz 12 (Rz 63)

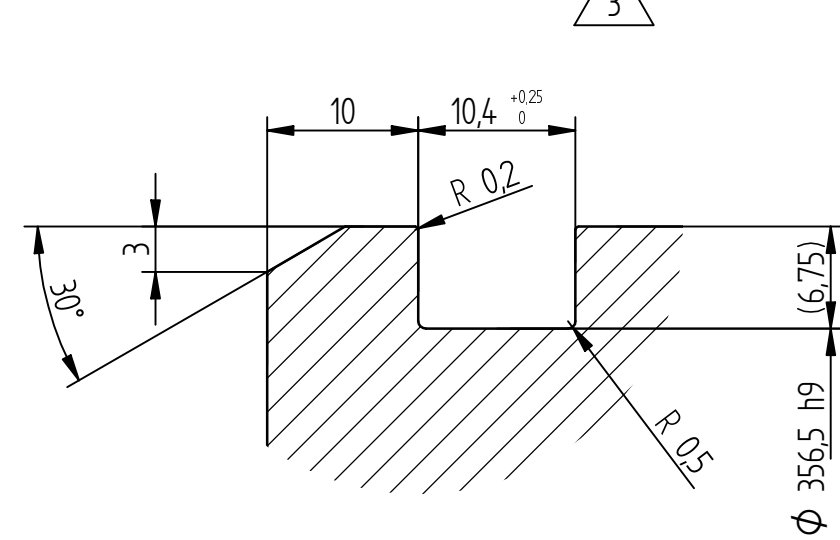
SECTION C-C



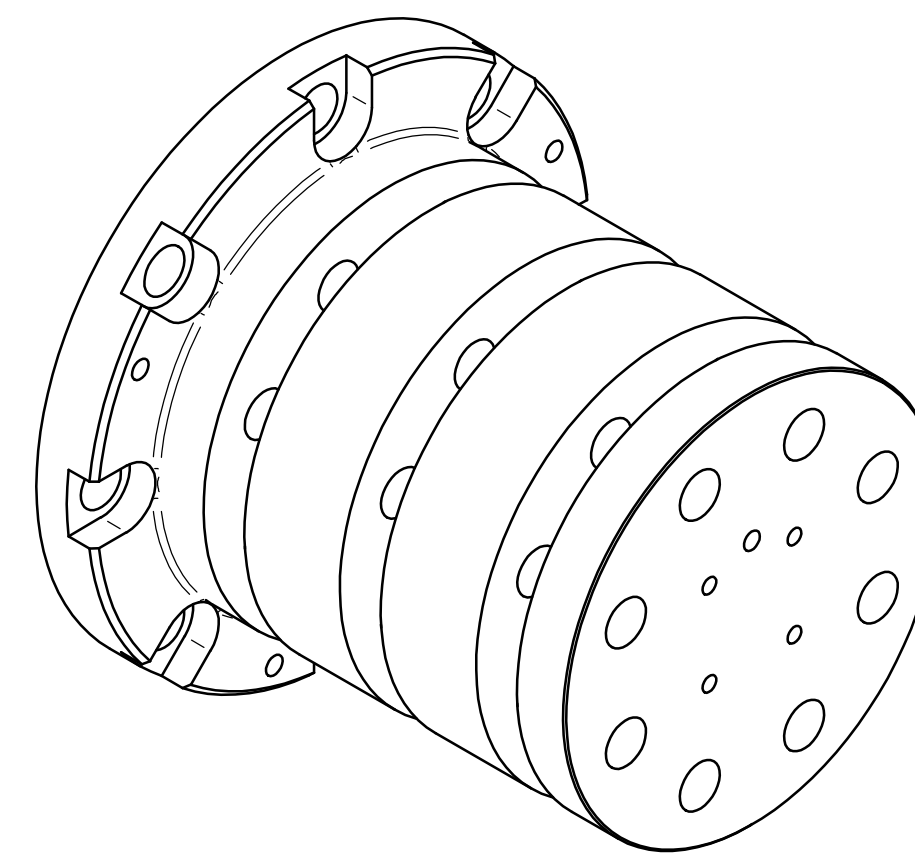
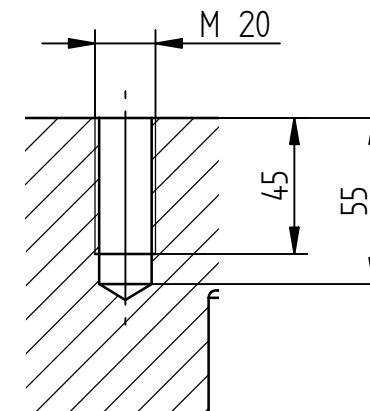
DETAIL E



DETAIL B



SECTION D-D



Tolerances		Freimaßtoleranzen	
Castings	: GTB 17 DIN 1680, Bl. 1 + 2	Gußrohrtteile	: GTB 17 DIN 1680, Bl. 1 + 2
Welded fabrications	: BF ISO 13920	Schweißkonstruktionen	: BF ISO 13920
All other dimensions	: medium DIN ISO 2768	alle übrigen Maße	: mittel DIN ISO 2768
Surface symbols	: DIN ISO 1302	Oberflächenzeichen	: DIN ISO 1302
Geometrical tolerancing	: DIN ISO 1101	Form- und Lagetoleranzen	: DIN ISO 1101
○ : Dimensions which are to be adhered to		○ : Istmaße werden protokolliert	

Consortium Partner Document Code
Kód na dokumenta na partnera od konsorcijuma
148115/00 370-0014
Project Doc. Number / Nosa projektnia dokument

Rev.	Date	Lang.	Sheet
4	20.09.2006	DE/EN	Stranica

THIS DOCUMENT IS NOT TO BE REPRODUCED OR TRANSMITTED IN ANY FORM OR BY ANY MEANS, ELECTRONIC OR MECHANICAL, INCLUDING PHOTOCOPYING, RECORDING, OR BY ANY INFORMATION STORAGE AND RETRIEVAL SYSTEM. Without express authority is strictly forbidden. Права върху този документ и информацията в него са запазени. Размножаването, използването или разпространяването на трети страни без специални пълномощия е строго забранено.