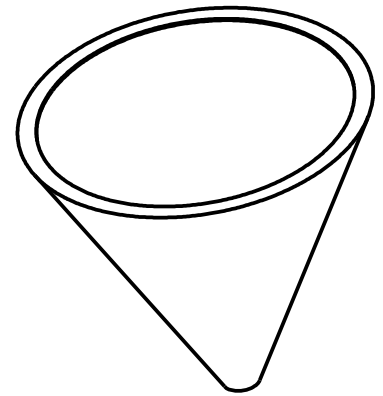
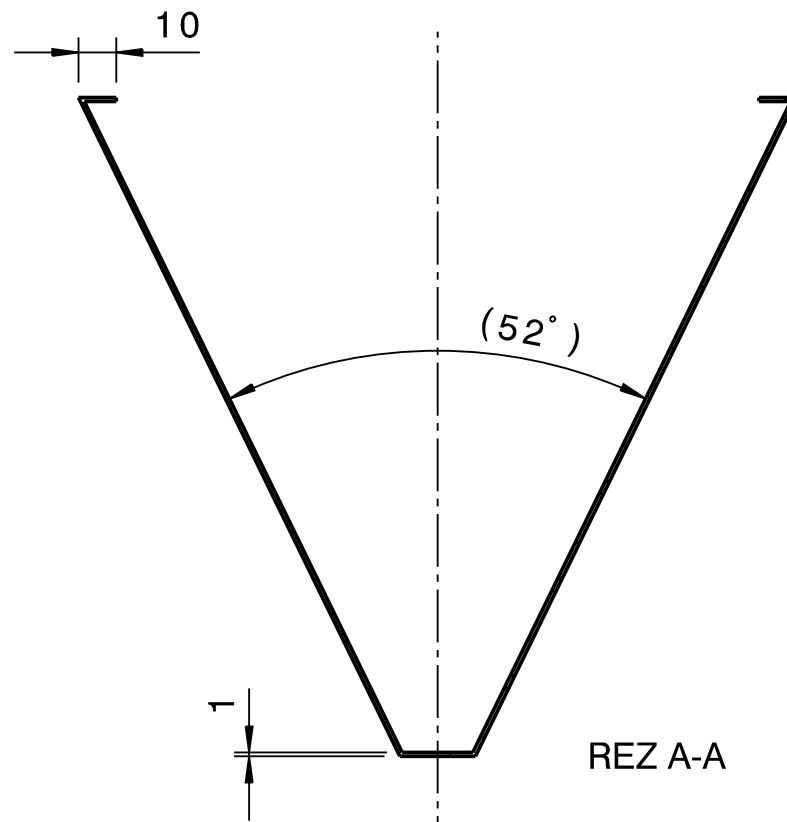
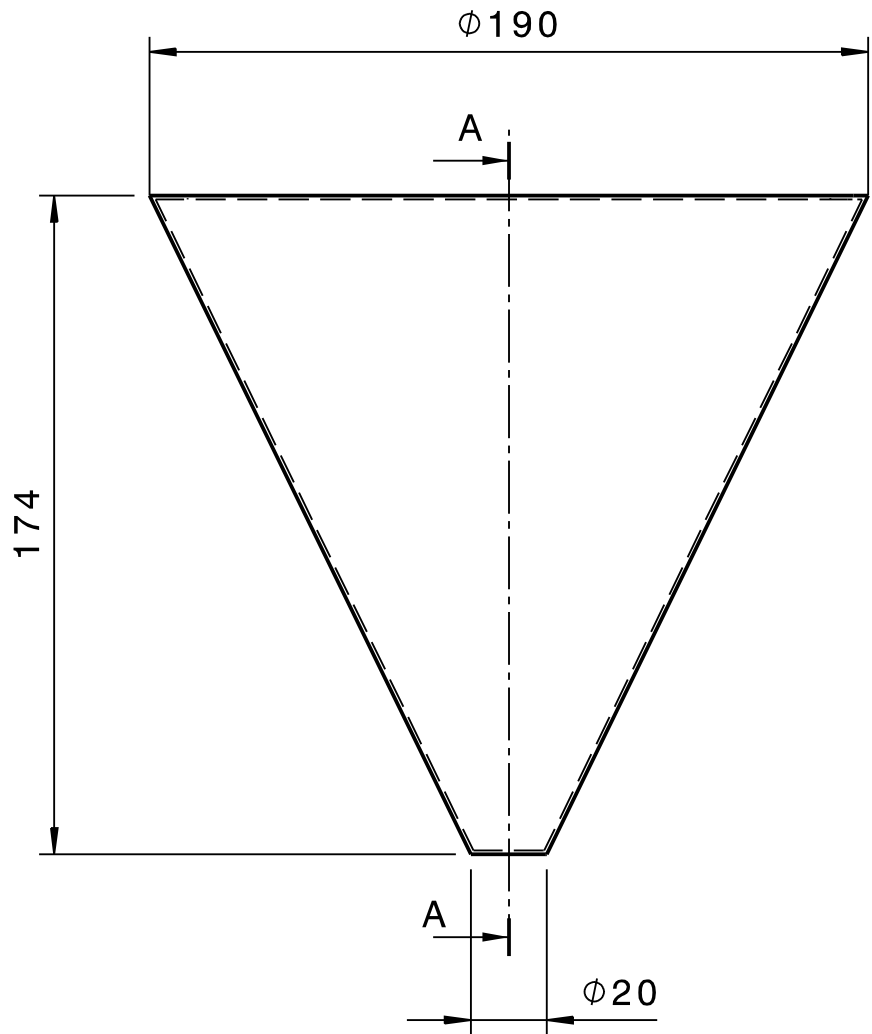
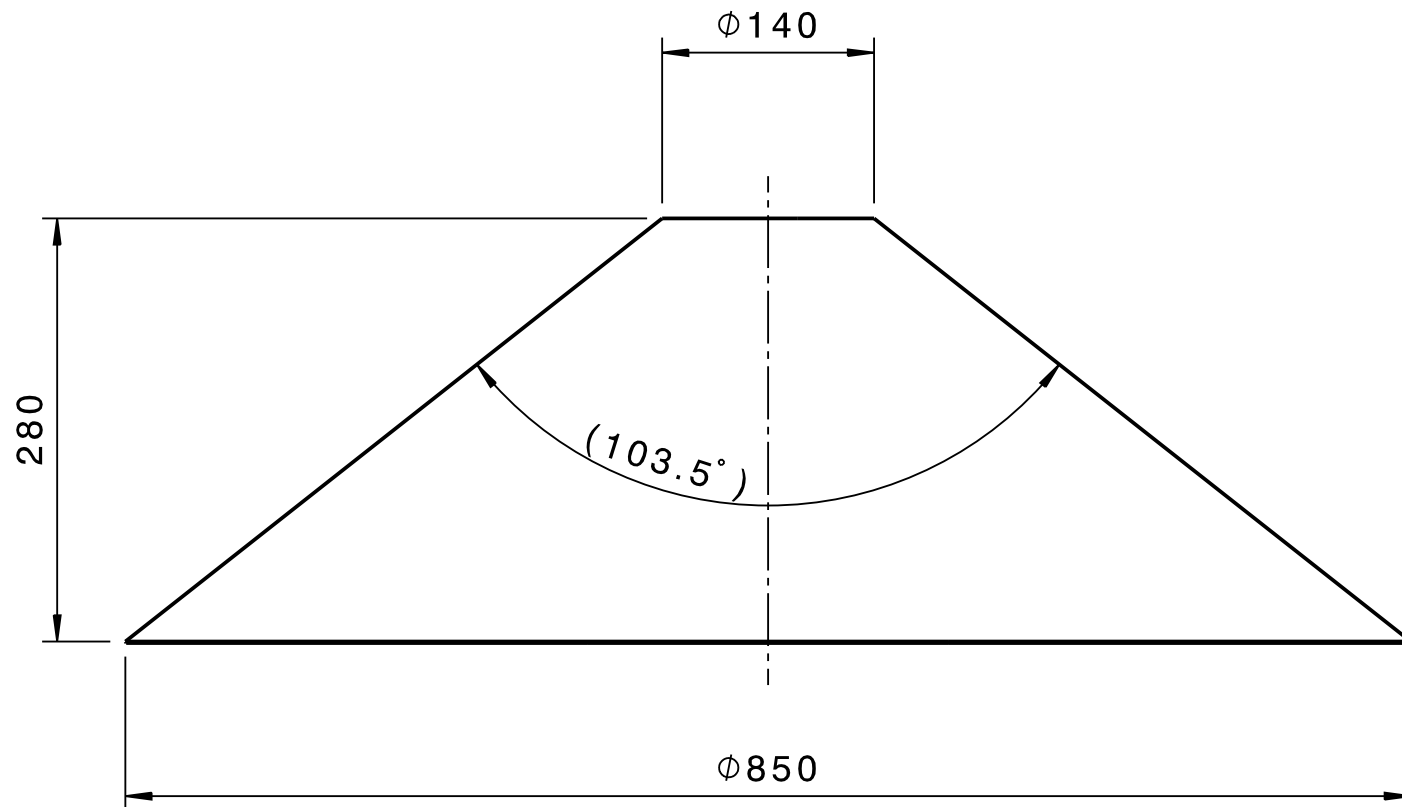


kuzel variant 2
 hrubka plechu = 1 mm
 M 1:5

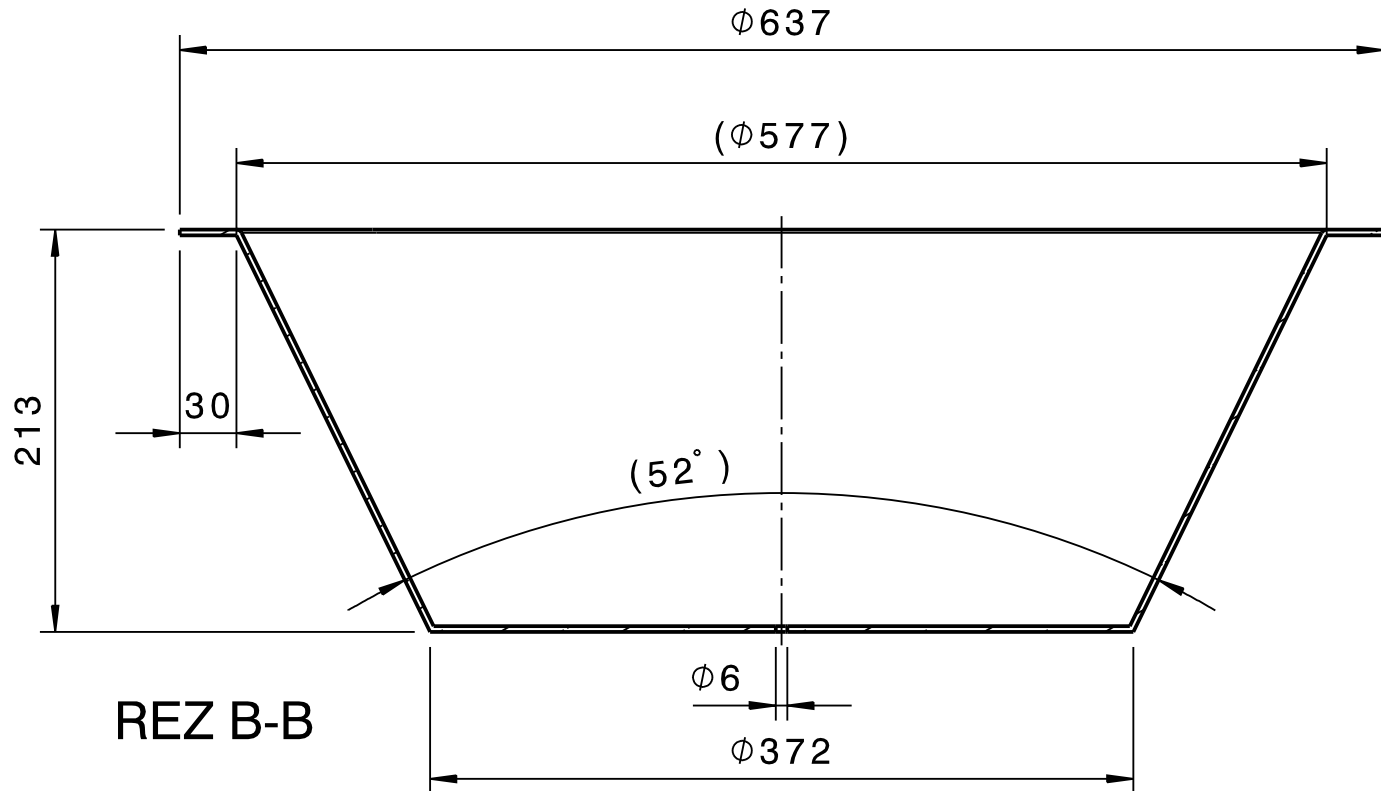
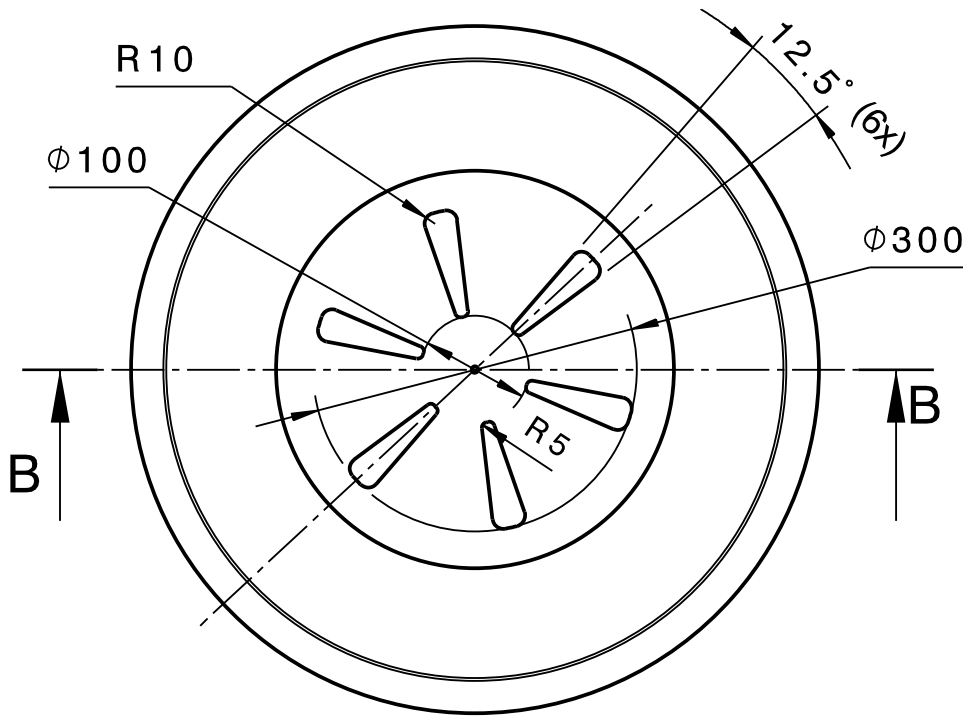


REZ A-A

vrchnak variant2
 hrubka plechu = 1 mm
 M 1:2



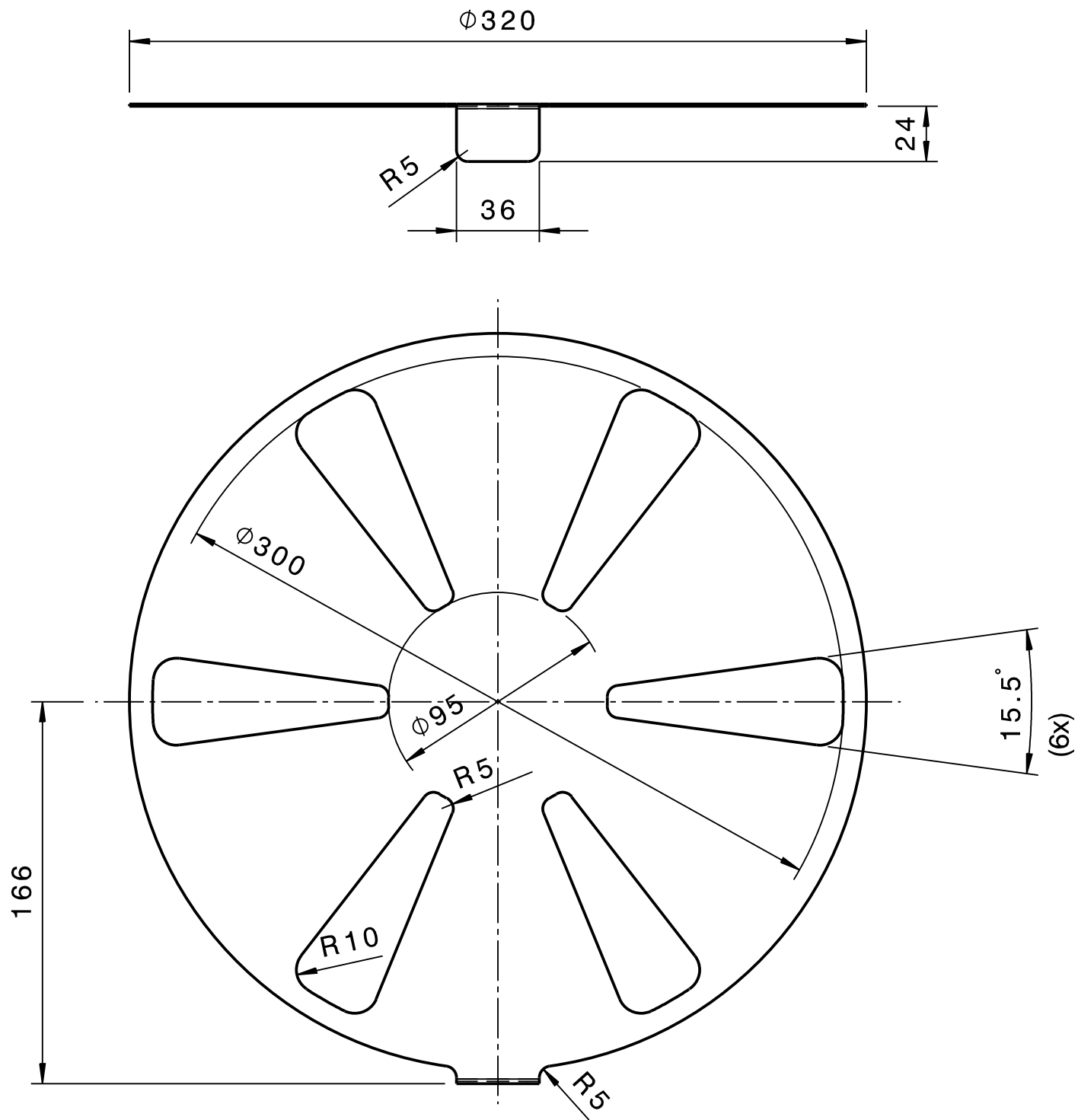
strecha 1
hrubka plechu = 1 mm
M 1:5



Nadoba 1

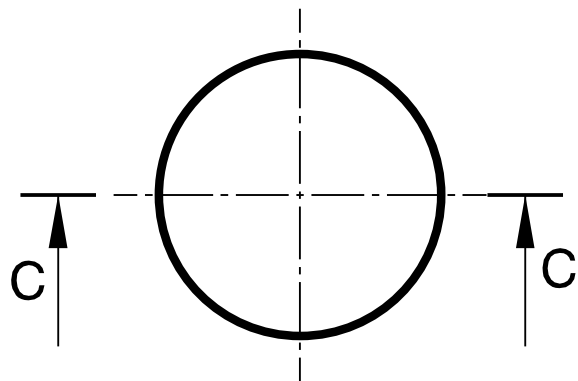
hrubka plechu = 3 mm

material = kotlova ocel (11 416, 11 444)

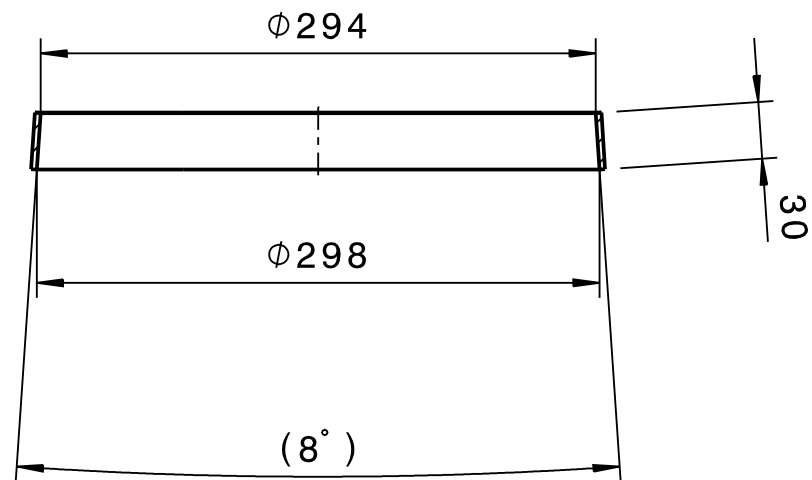


Klapka 1

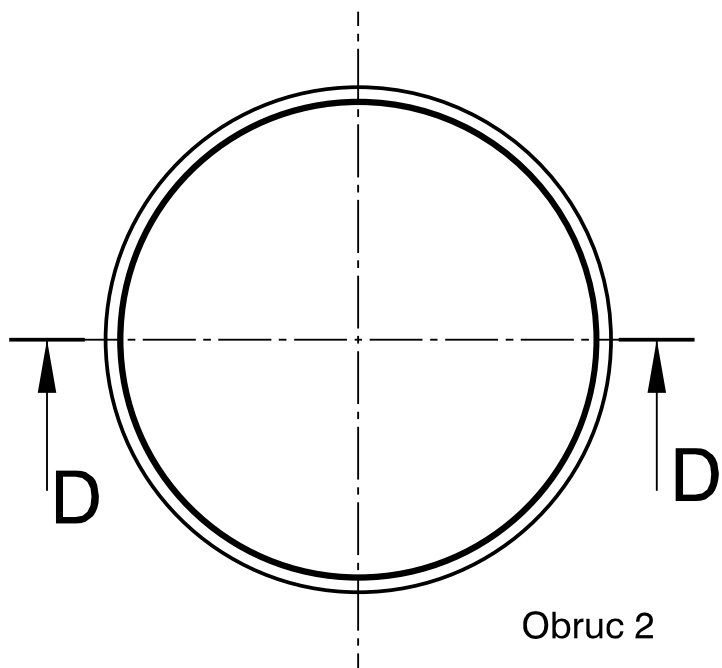
hrubka plechu = 1 mm



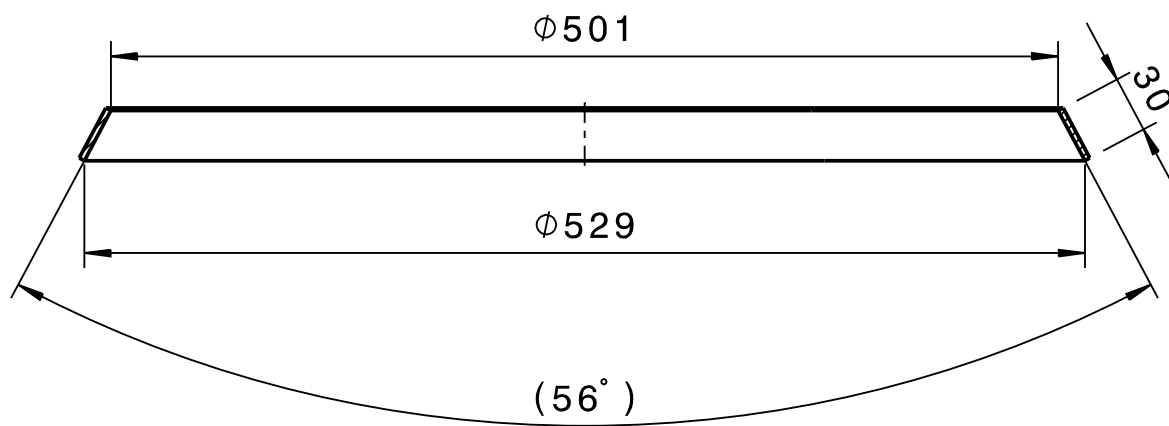
Obruc 1
Hrubka plechu= 3 mm



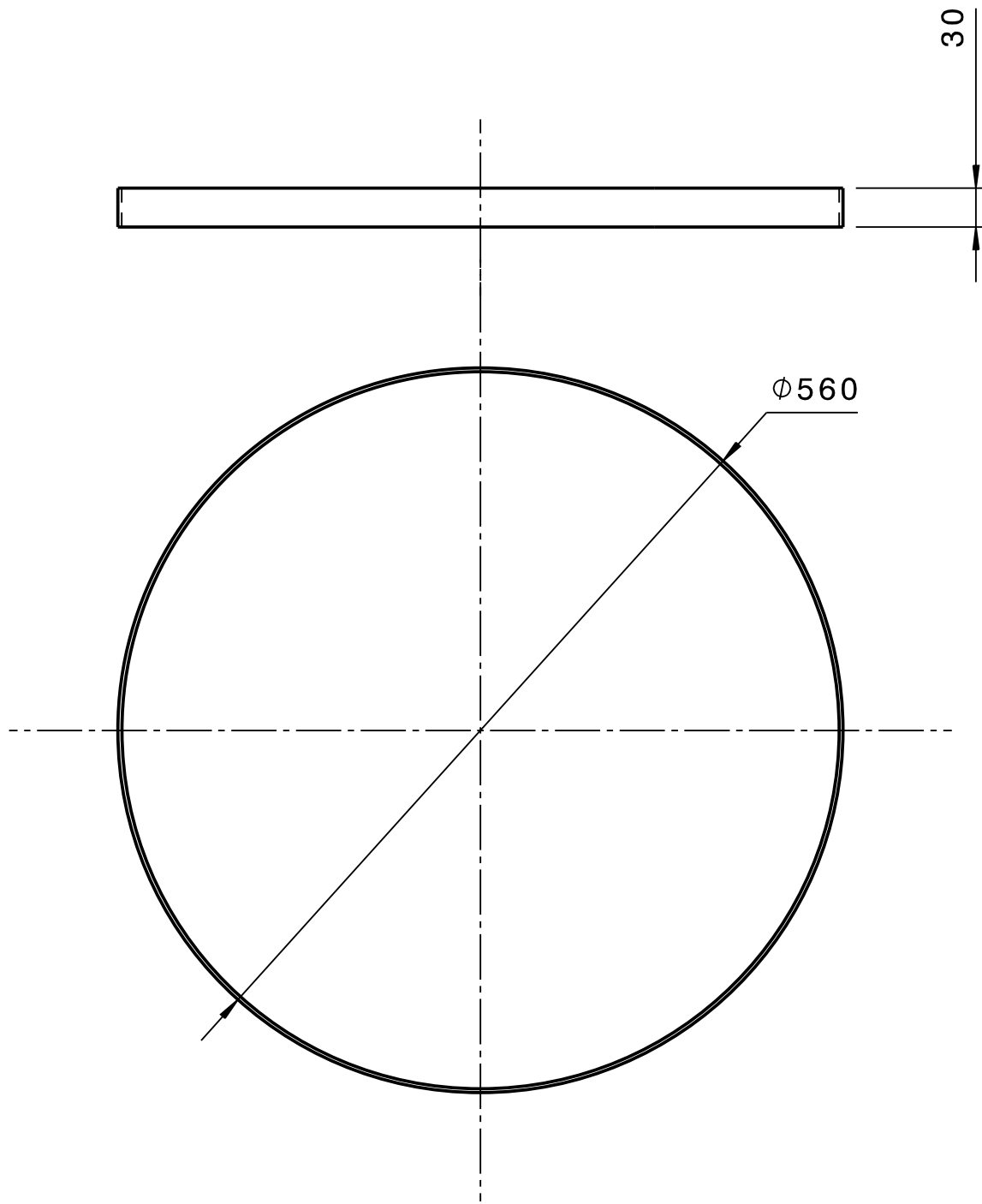
REZ C-C



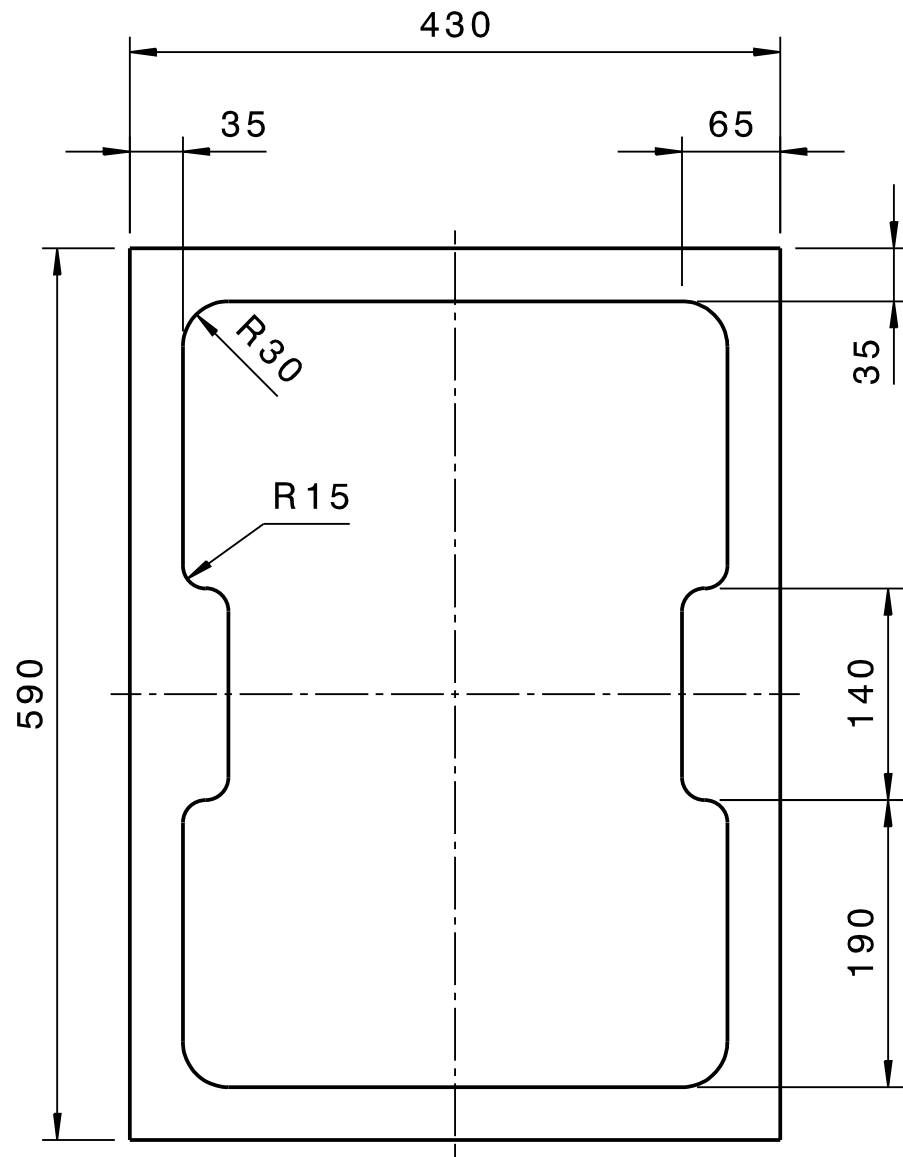
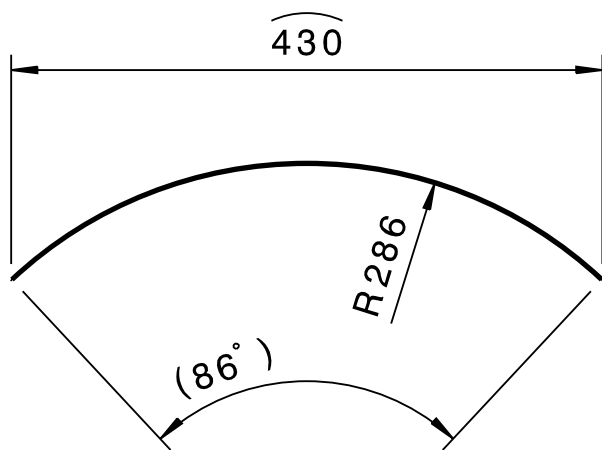
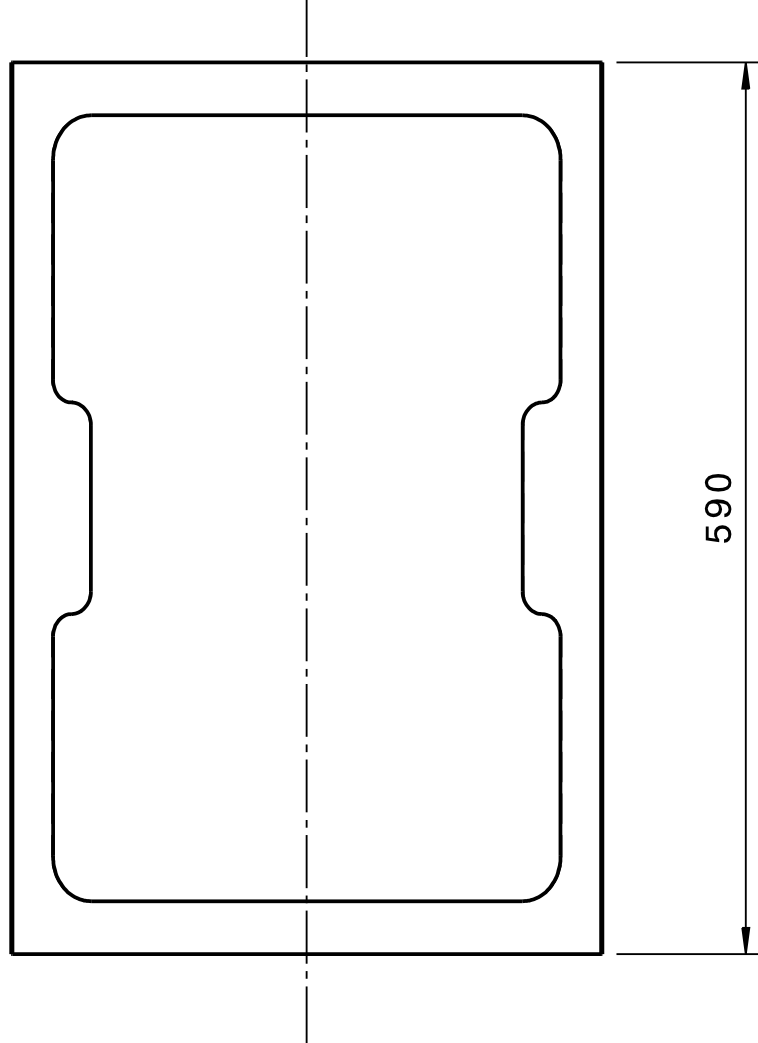
Obruc 2
Hrubka plechu= 3 mm



REZ D-D

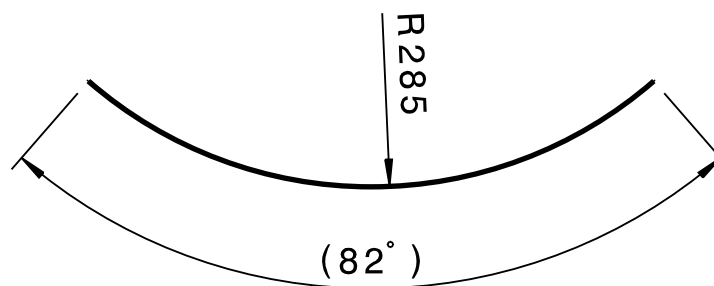
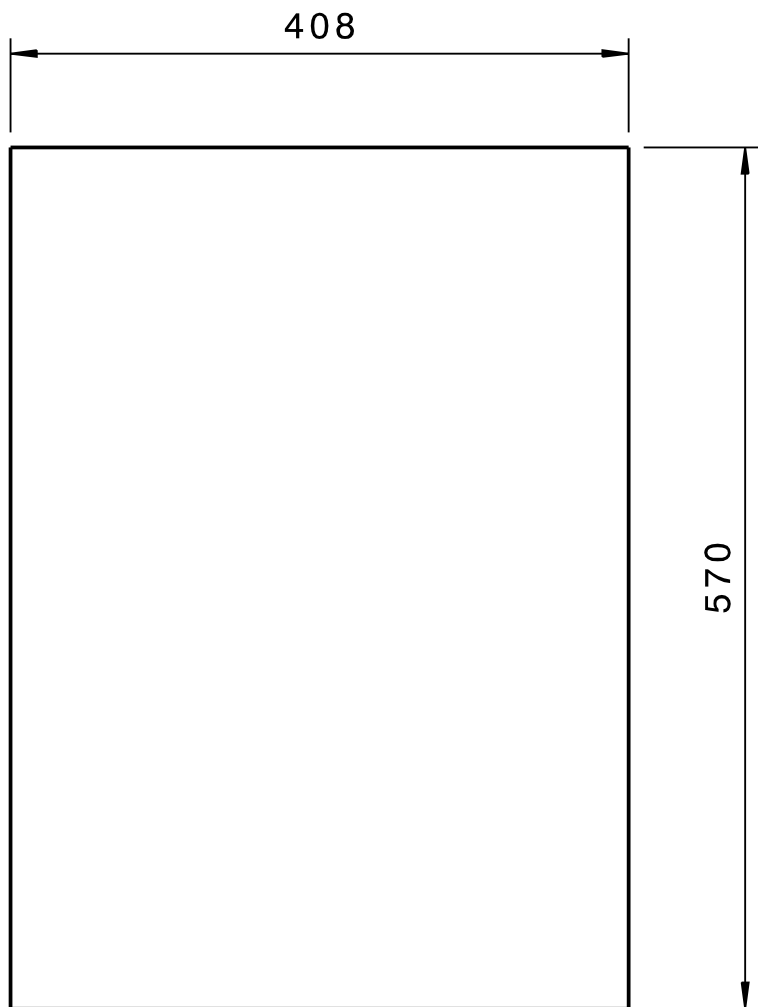


Obruc 3
Hrubka plechu= 3 mm



rozvinuty tvar

Clona 1
Hrubka materialu=0,5mm
M 1:5
4 ks



Tahokov 1
I KTR6x3,4x0,5/2Zn
Hrubka materialu=0,5mm
M 1:5
2ks