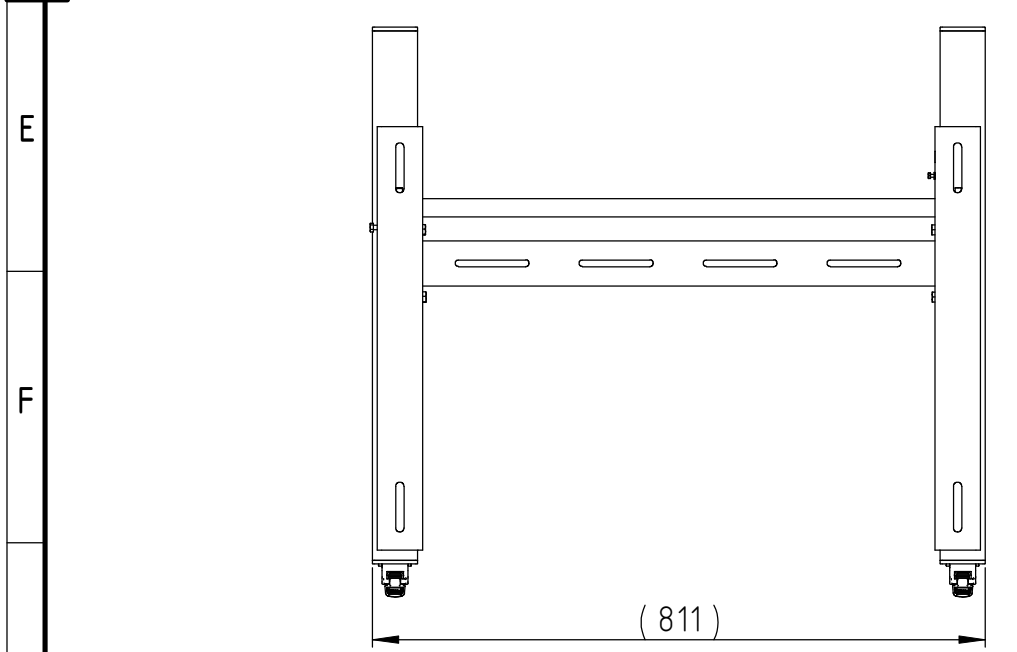
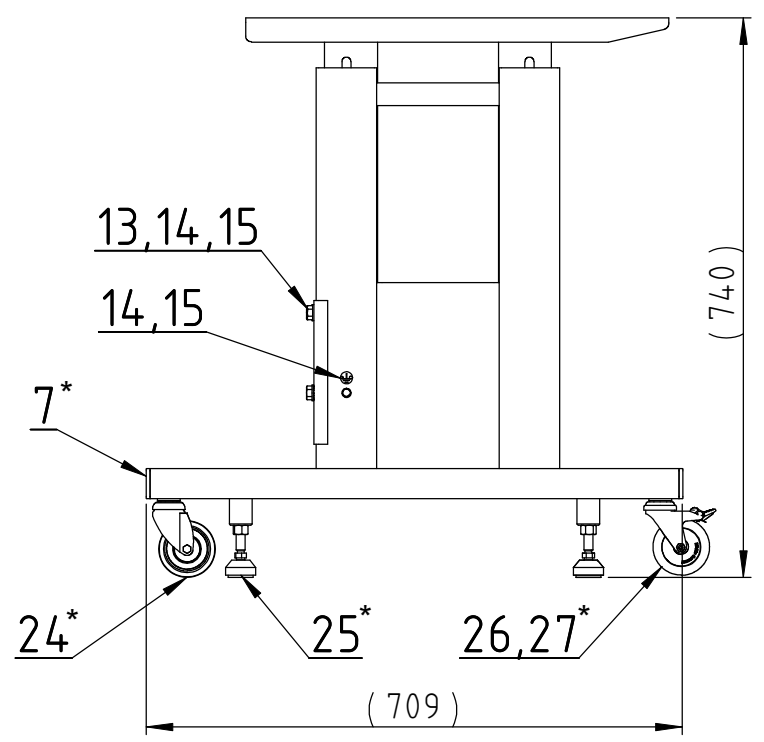
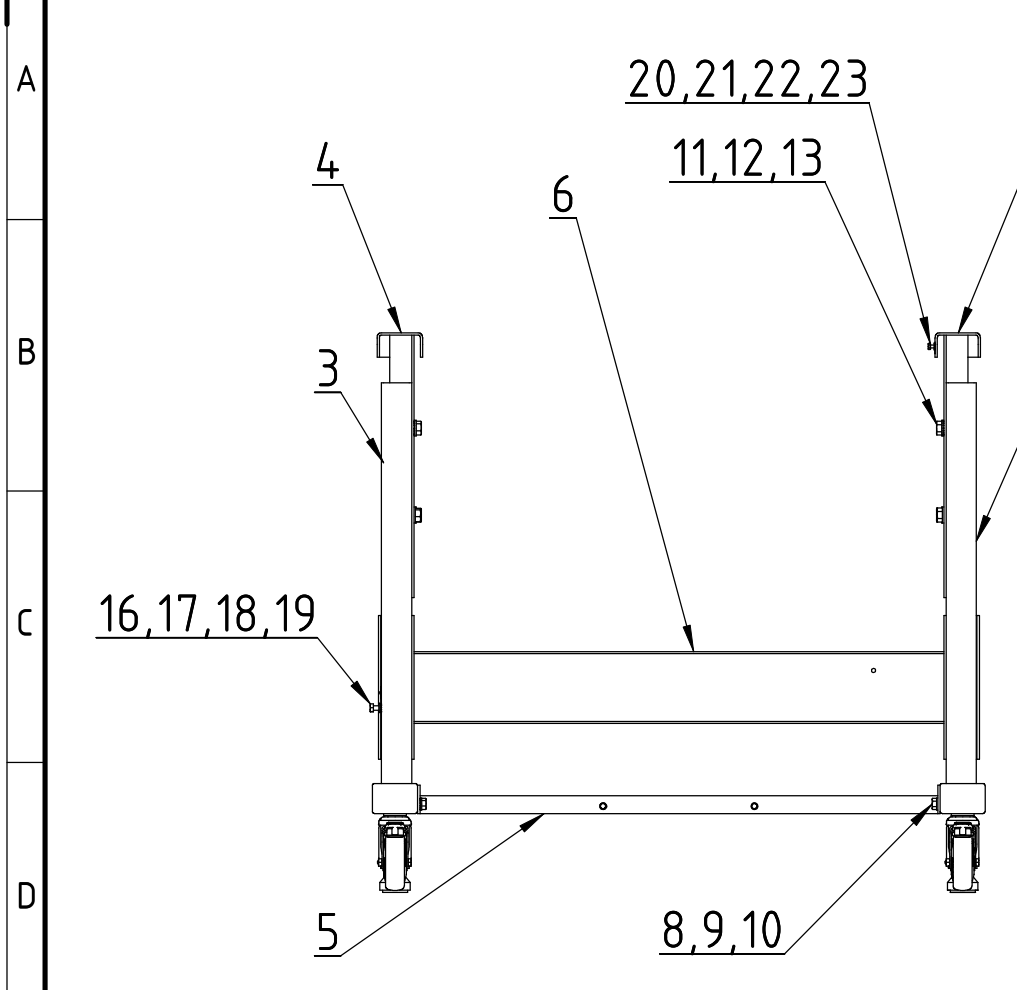
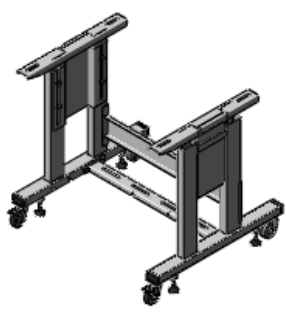


INDEX	POPIS	DATUM	ECN
-	ZAVEDENO	21.1.2010	TZ092007-G
A	DOPLNENI L3=6x	15.9.2010	TZ100101-B
B	UPRAVA PO OS L4=6x,L5=6x	14.12.2010	TZ100101-P
C	UPRAVA L1=2x,L8=2x	4.2.2011	TZ110101-B

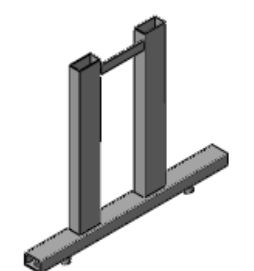
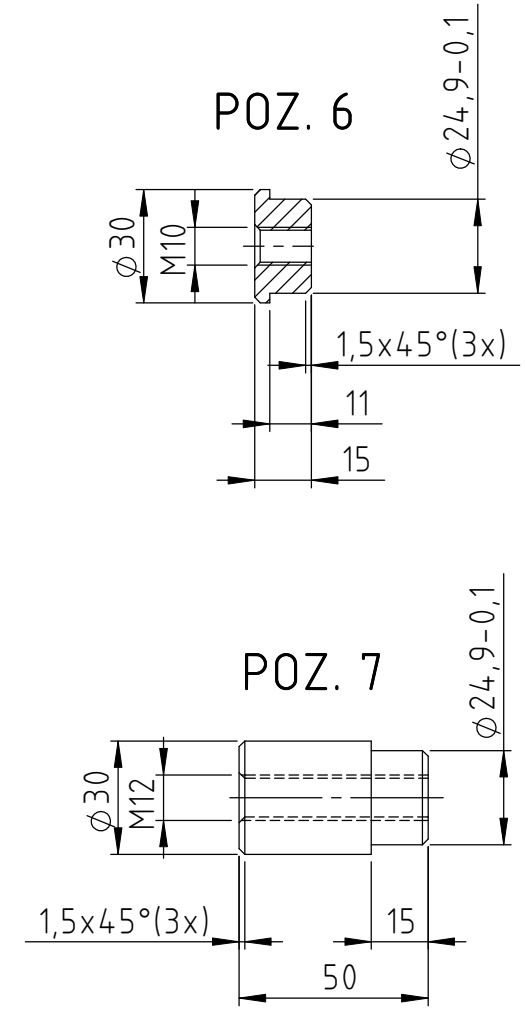
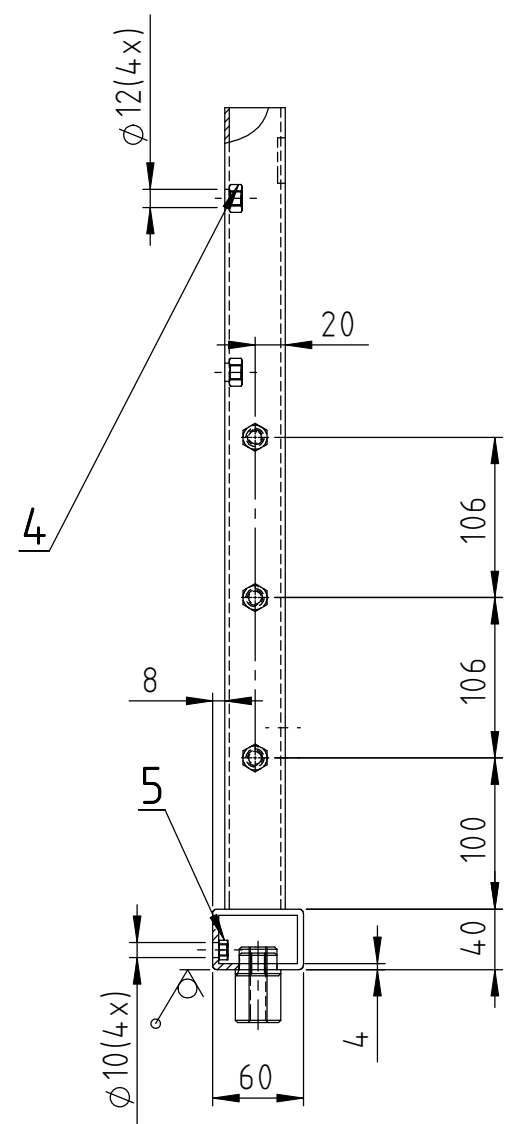
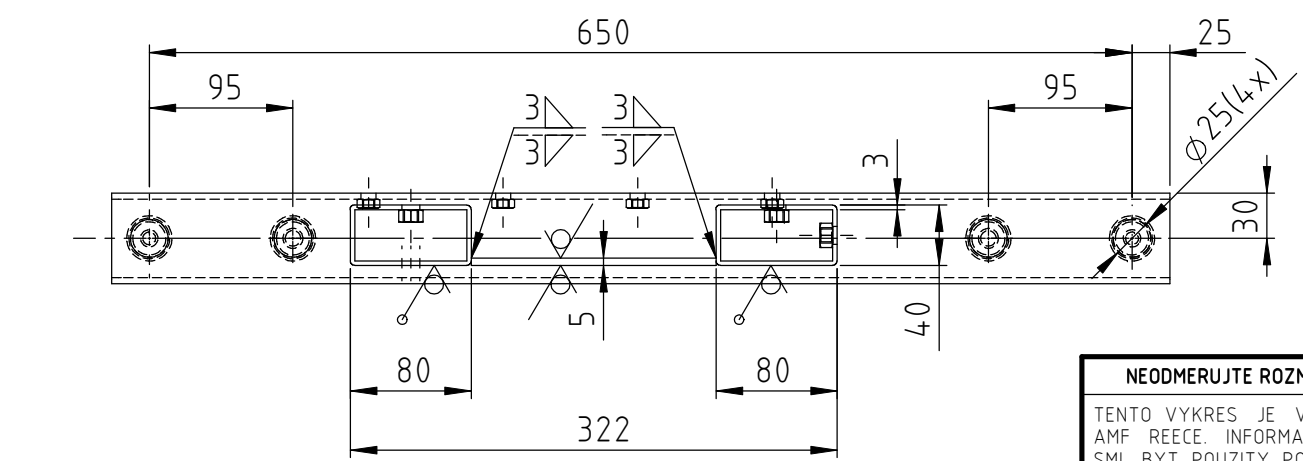
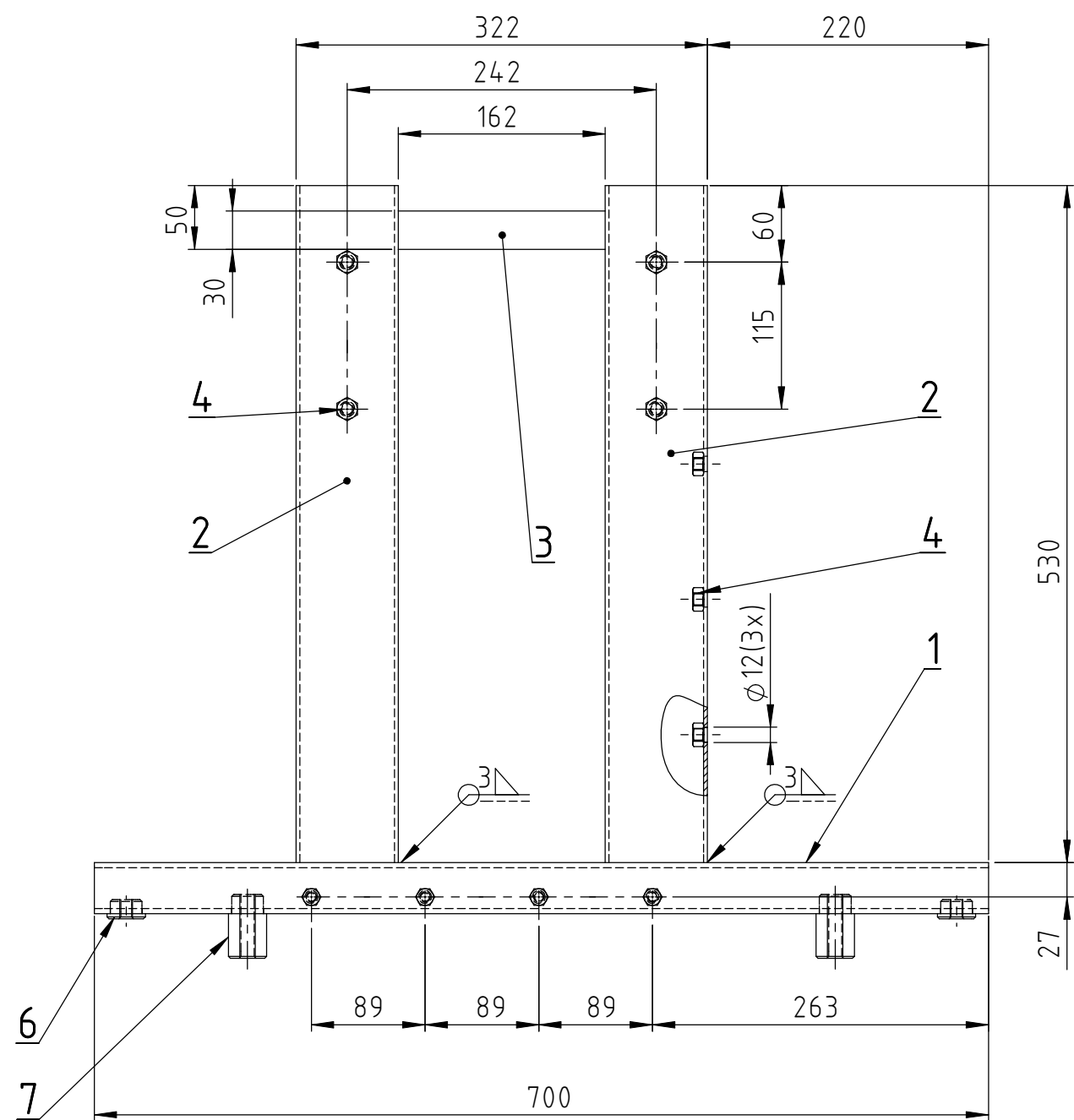


POZ.	C. DILU	NAZEV	Ks	INDEX
1	04.9015.0.000	FRAME KIT	1	
2	04.9015.0.000	FRAME KIT	1	
3	04.9015.0.000	FRAME KIT	1	
4	04.9015.0.000	FRAME KIT	1	
5	04.9015.0.000	FRAME KIT	1	
6	04.9015.0.000	FRAME KIT	1	
7	12.0008.6.996	PLUG 60x40	4	
8	08.6832.8.000	WASHER M8 CSN021745	2	
9	08.6852.8.000	WASHER M8 DIN125	4	
10	08.6312.8.020	SCREW M8-20 CSN021103	4	
11	08.6832.0.000	WASHER M10 CSN021745	6	
12	08.6852.0.000	WASHER 10,5 CSN 02 1702	12	
13	08.6312.0.020	SCREW M10x20 CSN021103	12	
14	17.0081.6.225	LABEL GROUND	1	
15	12.1016.0.000	RIVET	2	
16	08.6832.6.000	WASHER M6 CSN021745	1	
17	08.6852.6.000	WASHER 6,4 DIN 125A	1	
18	08.6802.6.000	SPRING WASHER M6 DIN128	1	
19	08.6312.6.020	SCREW M6-20 CSN021103	1	
20	08.6832.4.000	WASHER M4 CSN021745	1	
21	08.6852.4.000	WASHER M4 DIN125	1	
22	08.6312.4.008	SCREW M4-8 CSN 021103	1	
23	12.0008.4.052	LABEL GROUND	1	
24	12.0008.6.520	ROLLER LRA-TPA 75K-FK	2	C
25	12.0008.6.212	SHOCK MOUNT ACP 40 M12x102	4	
26	08.6000.0.025	SCREW M10-25 DIN912	4	
27	12.0008.6.529	WHEEL WITH BRAKE	2	C



\* ZAJISTENI A KOMPLETACE V AMF REECE

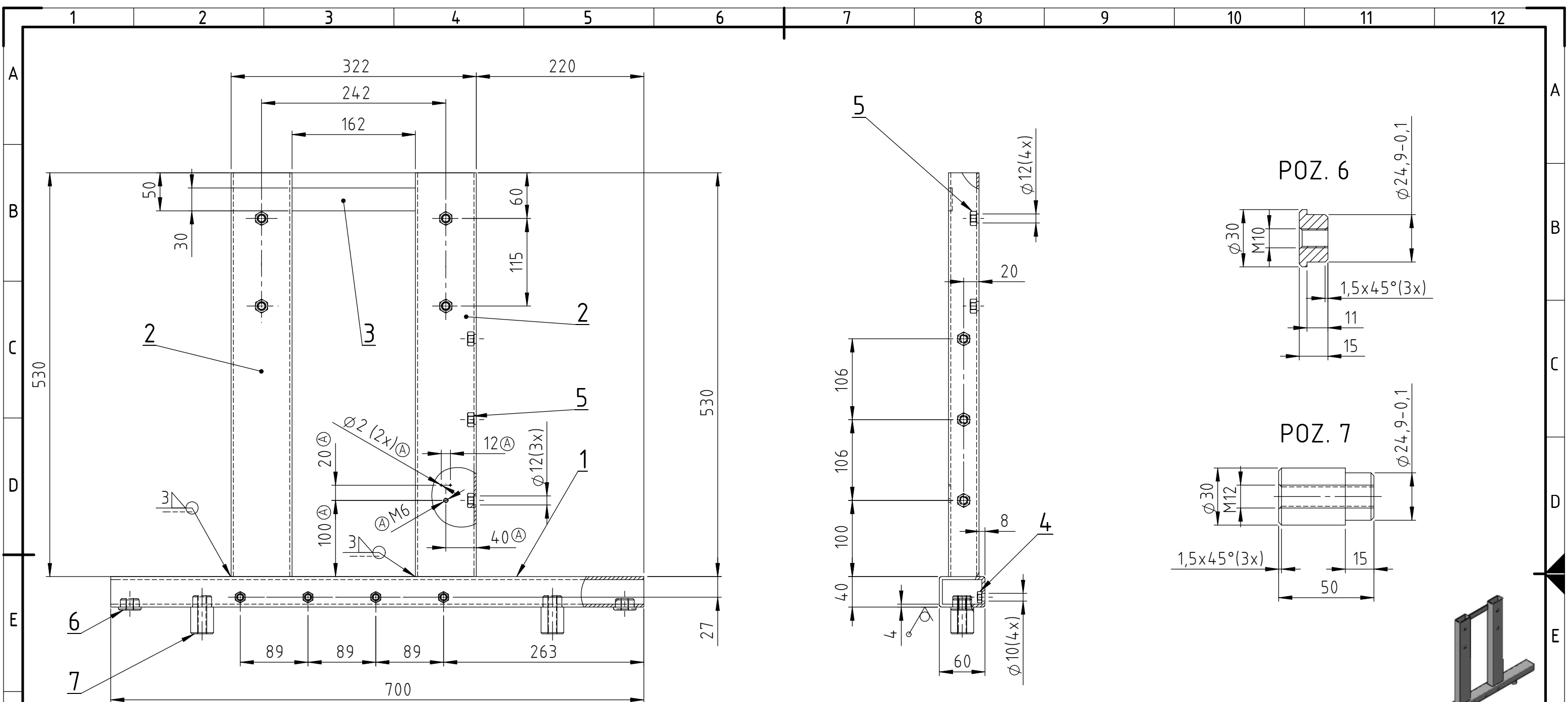
POVRCHOVA UPRAVA: NATER DLE PNM917081 RAL9002(BILA)		MERITKO: 1:10	
TEPELNE ZPRACOVANI: -		mm	
MATERIAL: DLE LISTU 2/8 - 7/8			
PODOBNY JAKO 04.9000.2.123			
SCHVALIL:	KOPÍ VYDAL:	DATUM KOPÍ:	
TECHNOLOGICKÝ PROVERIL: -	NAVRHL: HUBALEK	DATUM: 16.3.2009	
DRSNOST POVRCHU:	ISO 2768 m K	0.5...6 ±0.1	0.3
		0...10° ±1°	
		6...120 ±0.2	>10° ±0°30'
<p>TENTO VYKRES JE VYLUČNE MAJETKEM AMF REECE. INFORMACE ZDE OBSAZENE SMI BYT POUZITY POUZE PRO PŘIPRAVU NABÍDKY NEBO DODÁVKY PRO AMF REECE A NESMI BYT POSKYTNUTY NIKOMU TŘETÍMU ANI POUZITY PRO ZADNÝ JINÝ ÚČEL.</p>		<p>FRAME KIT RAM PODSTAVCE</p>	
		<p>04.9015.0.000</p>	
		<p>LIST: 1/8</p>	



DILY POZ. 4,5,6,7 JSOU SVARENY S DILY POZ.1,2

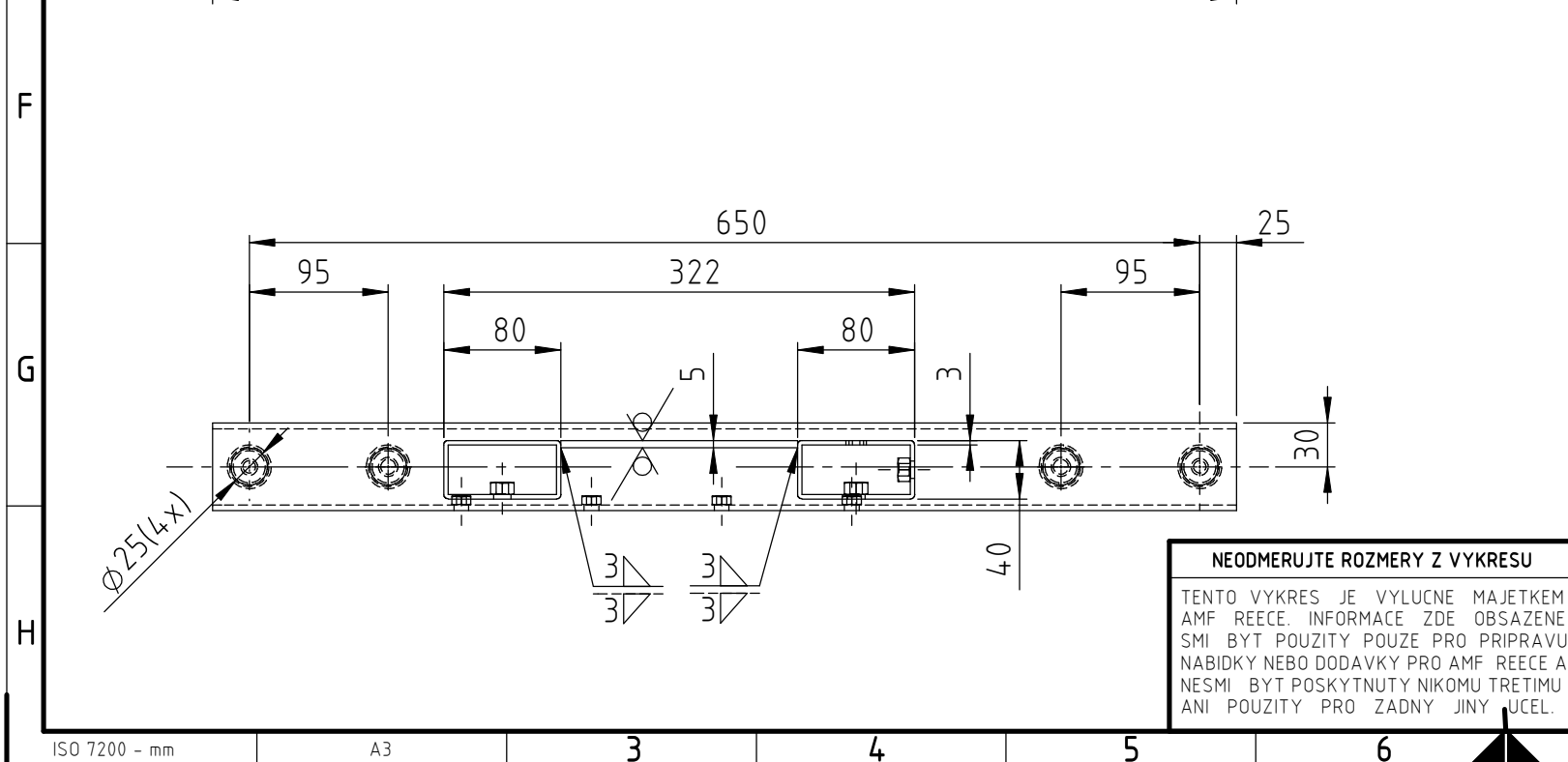
POZ.	C. DILU	Nazev	Material	Ks
1	-	ZAKLADNA	11 343 TYC 60x40x4	1
2	-	STOJINA	11 343 TYC 80x40x3	2
3	-	VYZTUHA	11 321 P5	1
4	08.6700.0.000	MATICE M10	-	7
5	08.6700.8.000	MATICE M8 CSN 021401.02	-	4
6	-	POUZDRO	11 373 TYC 30	2
7	-	POUZDRO	11 373 TYC 30	2

POVRCHOVA UPRAVA: NATER DLE PNM817081 RAL 9002(BILA)		MERITKO: 1:5		mm	
TEPELNE ZPRACOVANI: -					
MATERIAL: -					
-		TYP: ES-505			
SCHVALIL: -		KOPII VYDAL: NAVRHL: HUBALEK		DATUM KOPIE: DATUM: 24.2.2009	
TECHNOLOGICKY PROVERIL: -		ISO 2768 m K		0.3	
DRSNOST POVRCHU: 12,5		0.5...6 ±0.1		0...10° ±1°	
		6...120 ±0.2		>10° ±0°30'	
NEODMERUJTE ROZMERY Z VYKRESU		<b>FRAME KIT</b> RAM POSTAVCE <b>04.9015.0.000</b>			
TENTO VYKRES JE VYLUČNE MAJETKEM AMF REECE. INFORMACE ZDE OBSAZENE SMI BYT POUZITY POUZE PRO PŘIPRAVU NABÍDKY NEBO DODÁVKY PRO AMF REECE A NESMI BYT POSKYTNUTY NIKOMU TŘETÍMU ANI POUZITY PRO ŽÁDNÝ JINÝ ÚČEL.				LIST: 2/8	



DILY POZ.4,5,6,7 JSOU SVARENÝ S DILY POZ.1,2

POZ.	C. DILU	Nazev	Material	Ks
1	-	ZAKLADNA	11 343 TYC 60x40x4	1
2	-	STOJINA	11 343 TYC 80x40x3	2
3	-	VYZTUHA	11 321 P5	1
4	08.6700.8.000	MATICE M8 CSN 021401.02	-	4
5	08.6700.0.000	MATICE M10	-	7
6	-	POUZDRO	11 373 TYC 30	2
7	-	POUZDRO	11 373 TYC 30	2



**NEODMERUJTE ROZMERY Z VYKRESU**  
 TENTO VYKRES JE VYLUČNE MAJETKEM AMF REECE. INFORMACE ZDE OBSAZENE SMI BYT POUZITY POUZE PRO PRIPRAVU NABIDKY NEBO DODAVKY PRO AMF REECE A NESMI BYT POSKYTNUTY NIKOMU TRETIMU ANI POUZITY PRO ZADNY JINY UCEL.

POVRCHOVA UPRAVA: NATER DLE PNM817081 RAL9002(BILA)

TEPELNE ZPRACOVANI: -

MATERIAL: -

SCHVALIL: - KOPÍ VYDAL: NAVRHL: HUBALEK DATUM KOPIE: 24.2.2009

DRSNOST POVRCHU: ISO 2768 m K

AMF REECE

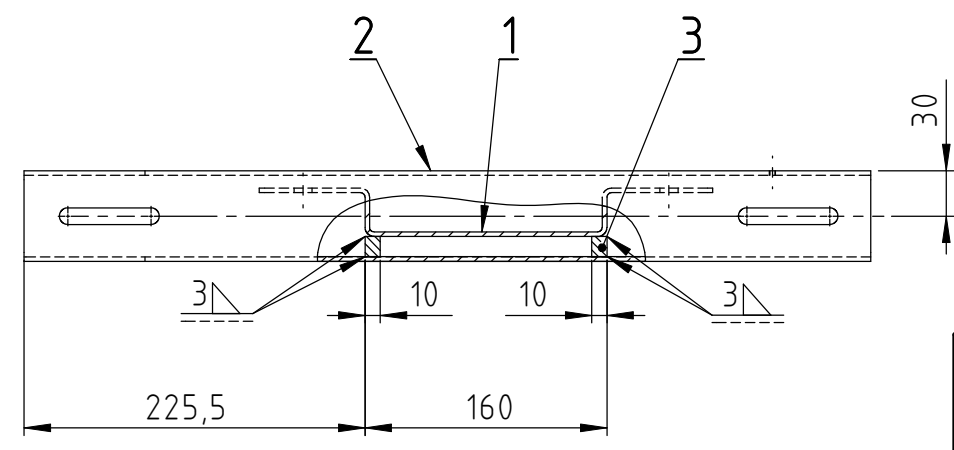
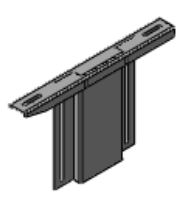
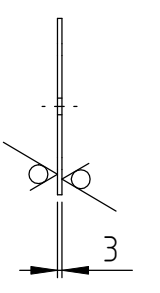
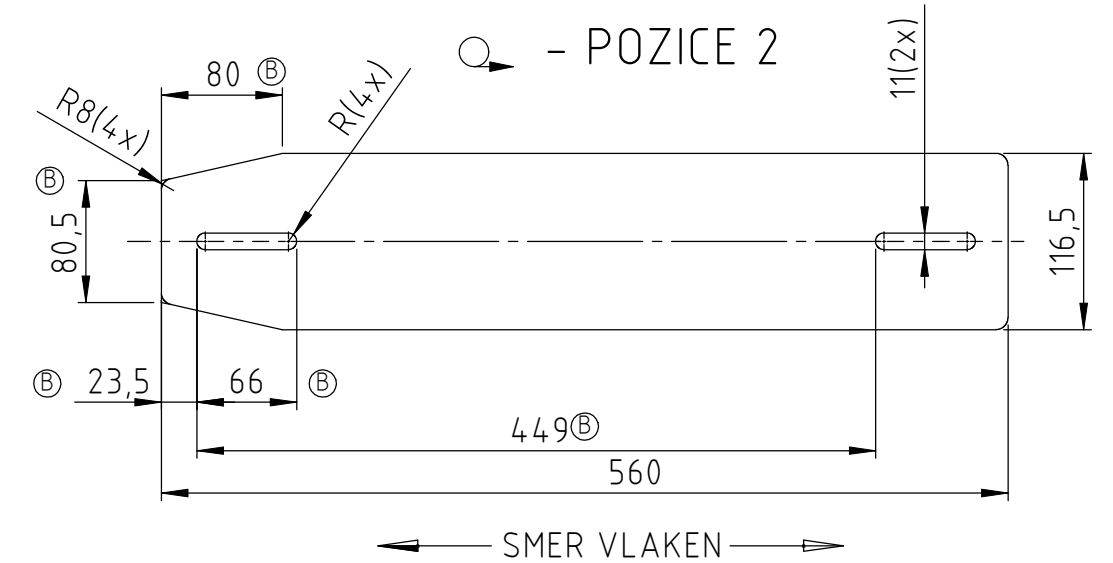
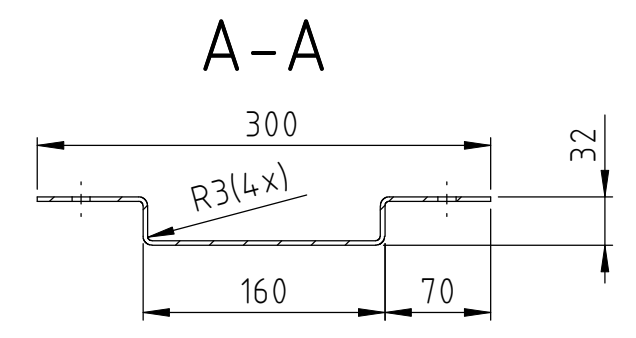
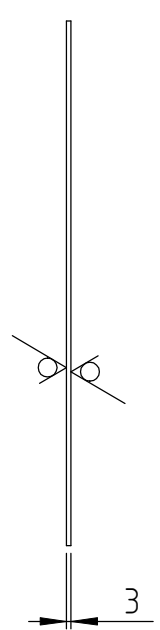
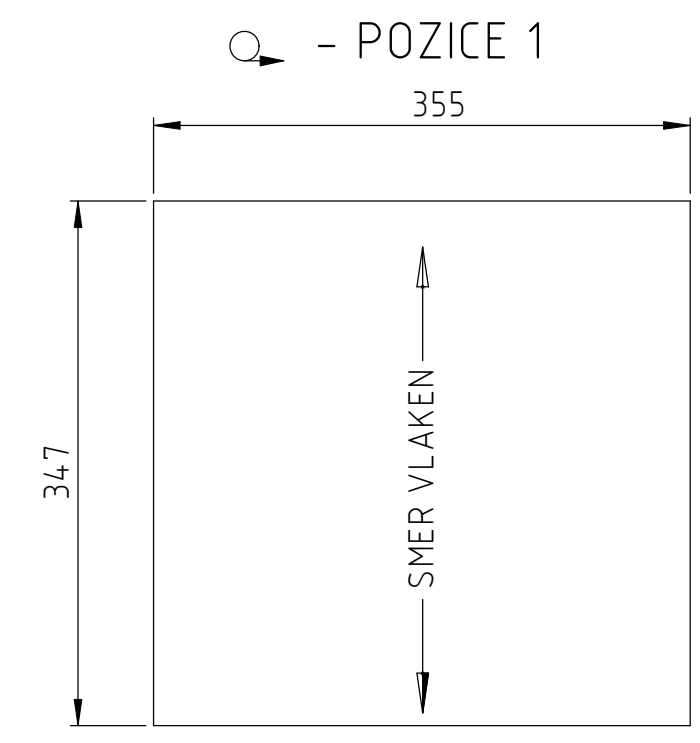
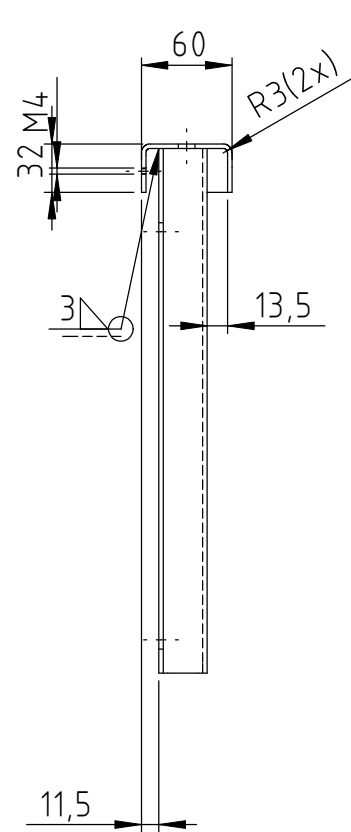
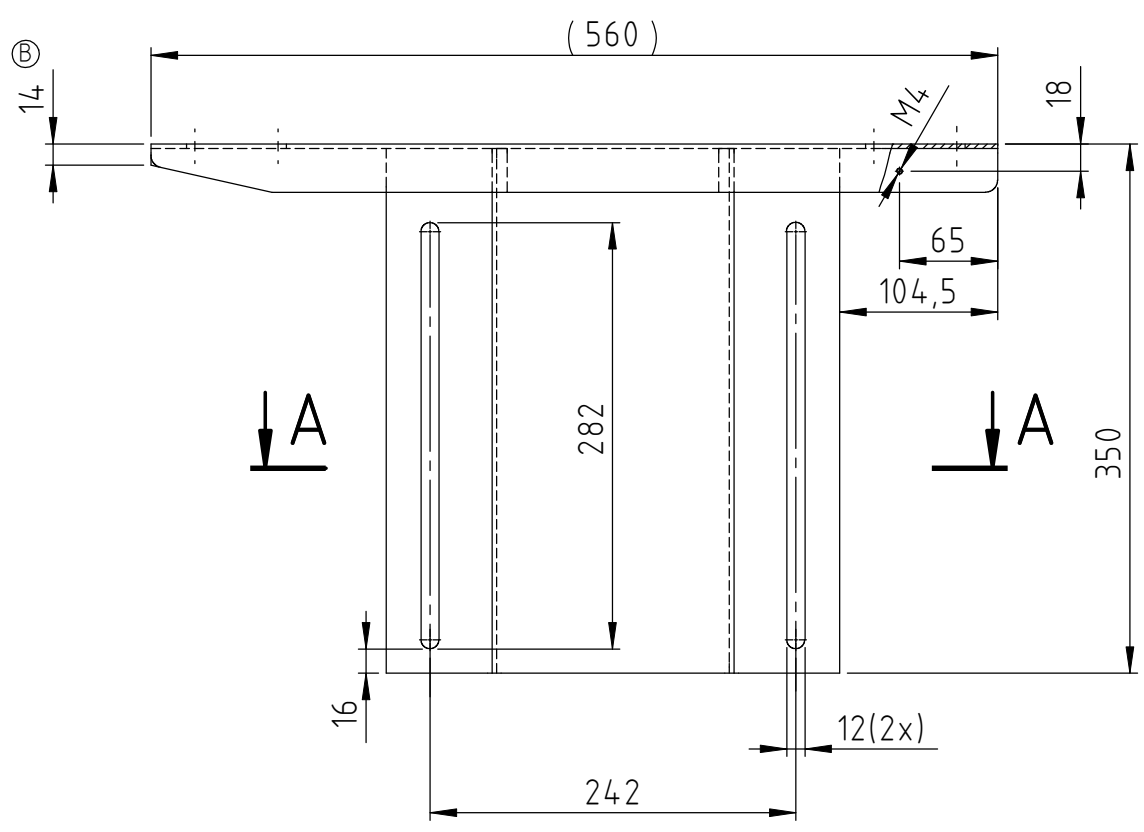
TYP: ES-505

**FRAME KIT**  
 RAM PODSTAVCE

**04.9015.0.000**

LIST: 3/8

AMF is a trademark of AMF GROUP

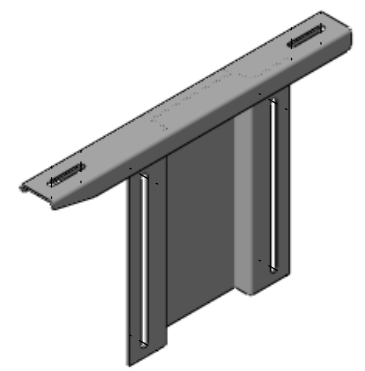
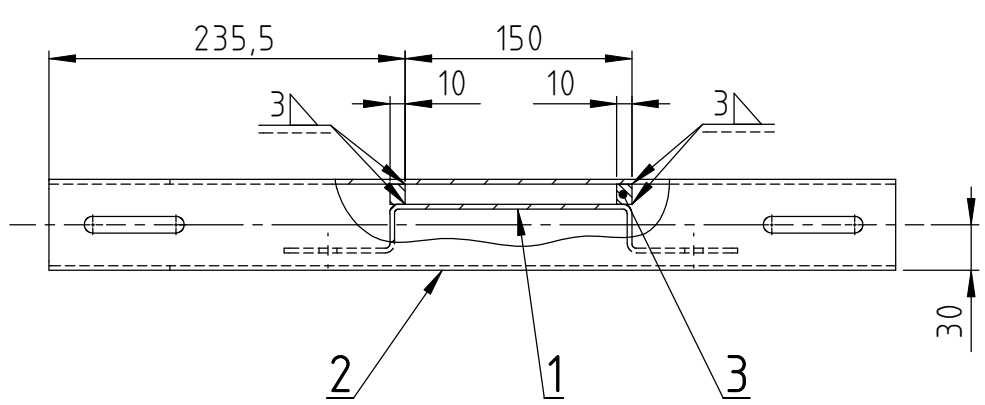
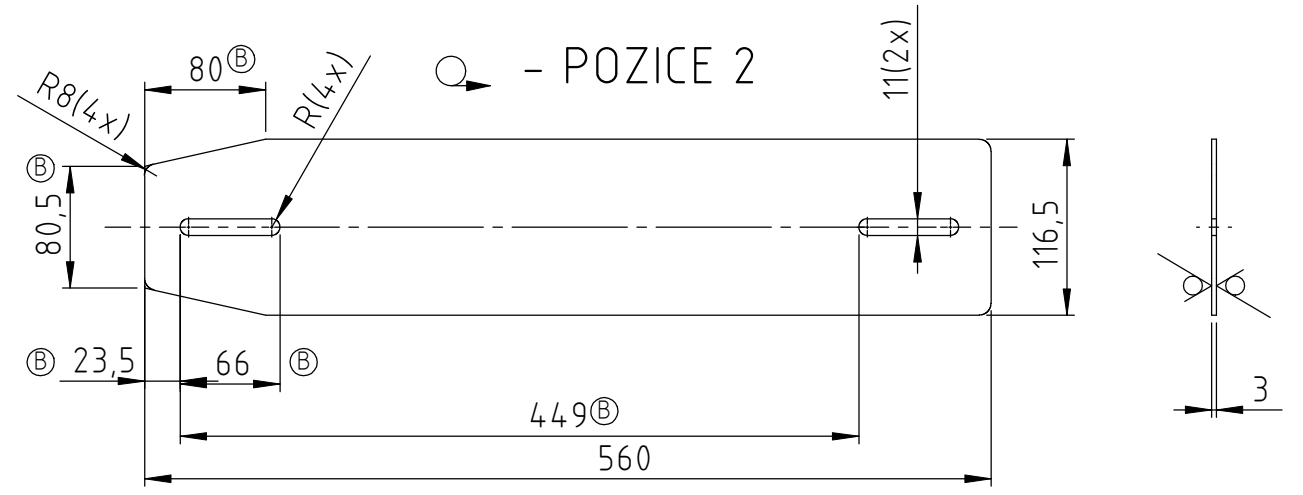
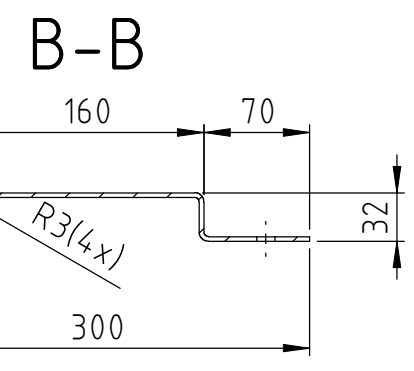
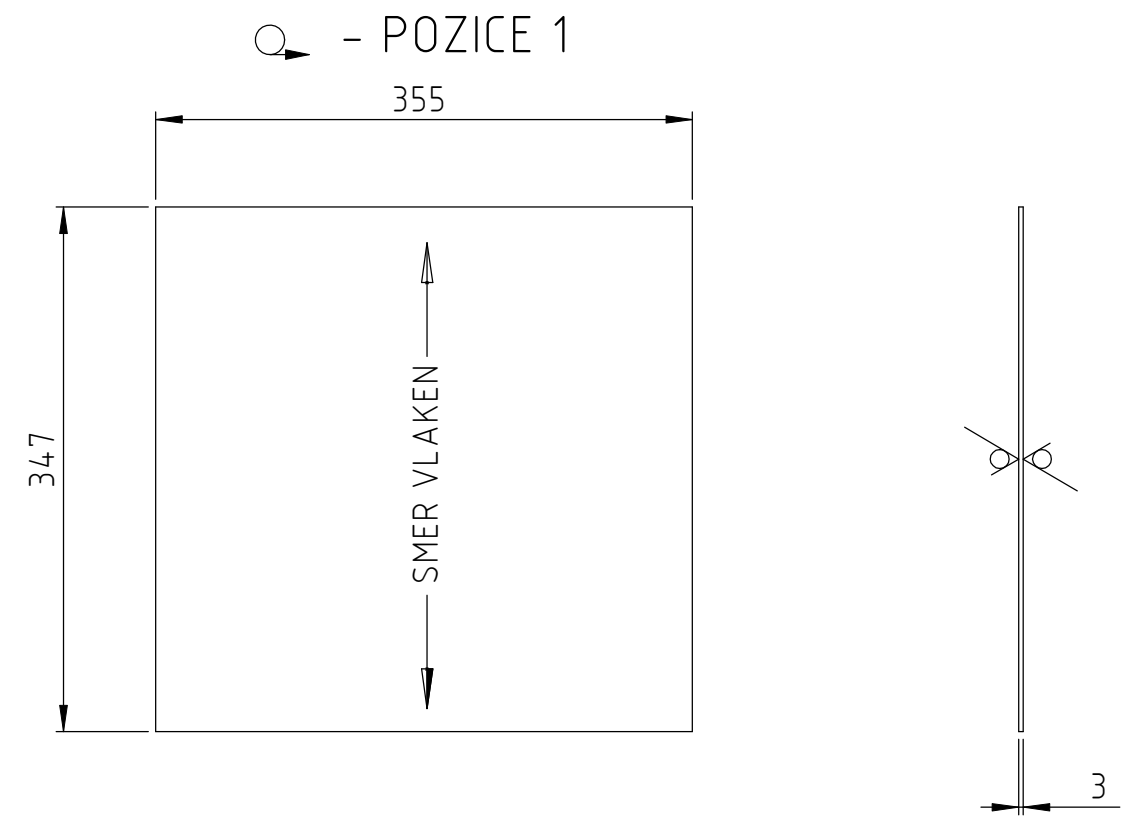
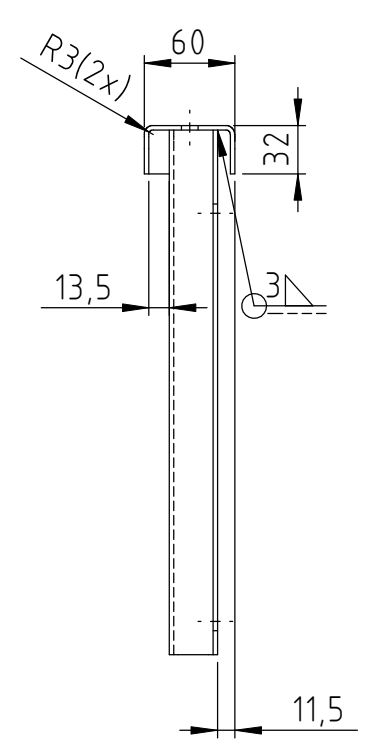
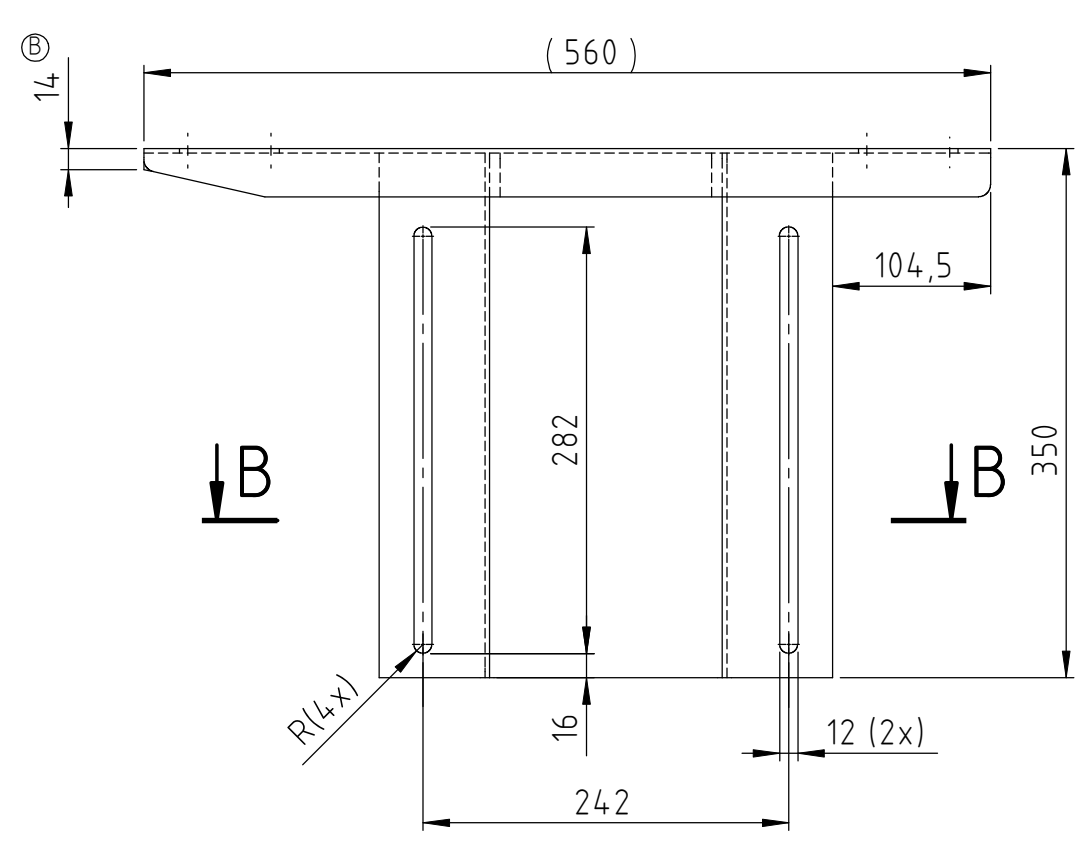


**NEODMERUJTE ROZMERY Z VYKRESU**  
 TENTO VYKRES JE VYLUČNE MAJETKEM AMF REECE. INFORMACE ZDE OBSAZENE SMI BYT POUZITY POUZE PRO PRIPRAVU NABIDKY NEBO DODAVKY PRO AMF REECE A NESMI BYT POSKYTNUTY NIKOMU TRETIMU ANI POUZITY PRO ZADNY JINY UCEL.

POZ.	C. DILU	Nazev	Material	Ks
1	-	STOJINA	11 523 P3	1
2	-	ZAKLADNA	11 523 P3	1
3	-	VYZTUHA	11 373	2

POVRCHOVA UPRAVA: NATER DLE PNM817081 RAL9002(BILA)  
 TEPELNE ZPRACOVANI: -  
 MATERIAL: -  
 SCHVALIL: -  
 KOPIL VYDAL: NAVRHL: HUBALEK  
 DATUM KOPE: 24.2.2009  
 DRSNOST POVRCHU: ISO 2768 m K  
 12,5  
 0.5..6 ±0.1 0...10° ±1°  
 6...120 ±0.2 >10° ±0°30'  
 0.3

AMF REECE  
 TYP: ES-505  
**FRAME KIT**  
 RAM PODSTAVCE  
**04.9015.0.000**  
 LIST: 4/8



POZ.	C. DILU	Nazev	Material	Ks
1	-	STOJINA	11 523 P3	1
2	-	ZAKLADNA	11 523 P3	1
3	-	VYZTUHA	11 373	2

**NEODMERUJTE ROZMERY Z VYKRESU**  
 TENTO VYKRES JE VYLUČNE MAJETKEM AMF REECE. INFORMACE ZDE OBSAŽENÉ SMÍ BYT POUŽITY POUZE PRO PŘIPRAVU NABÍDKY NEBO DODÁVKY PRO AMF REECE A NESMÍ BYT POSKYTNUTY NIKOMU TŘETÍMU ANI POUŽITY PRO ŽÁDNÝ JINÝ ÚČEL.

POVRCHOVA UPRAVA: NÁTER DLE PNM817081 RAL9002(BILA)

TEPELNÉ ZPRACOVÁNÍ: -

MATERIAL: -

SCHVALIL: \_\_\_\_\_ KOPÍ VYDAL: \_\_\_\_\_ DATUM KOPIE: \_\_\_\_\_

TECHNOLOGICKÝ PROVERIL: - NAVRHL: HUBALEK DATUM: 24.2.2009

DRSNOST POVRCHU: ISO 2768 m K

12,5 / 30

0.5..6 ±0.1 0...10° ±1°

6...120 ±0.2 >10° ±0°30'

0.3

AMF REECE

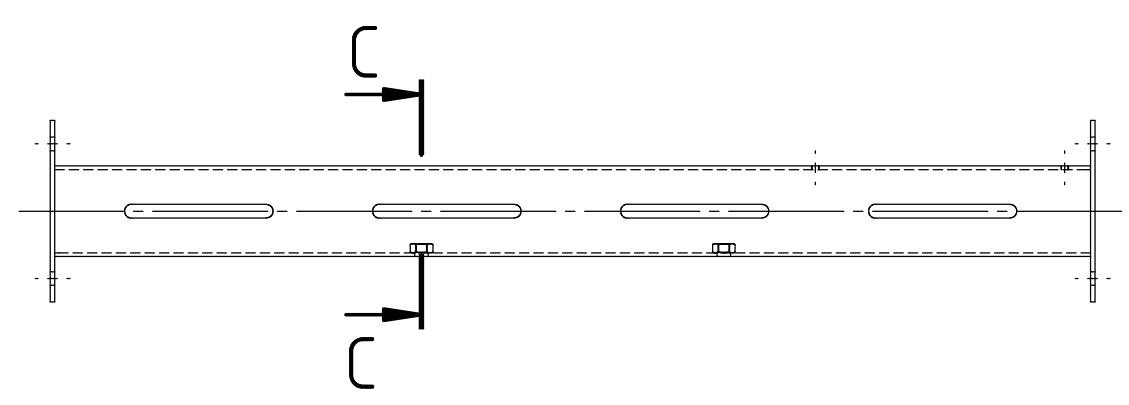
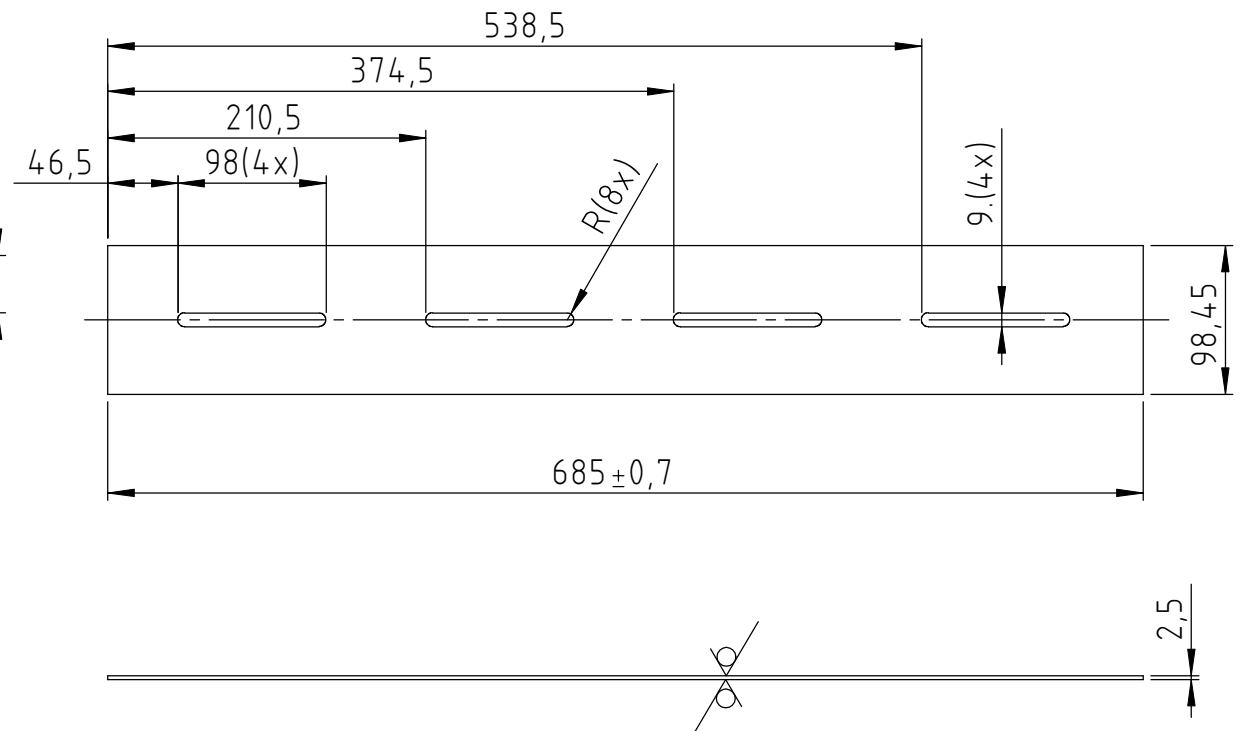
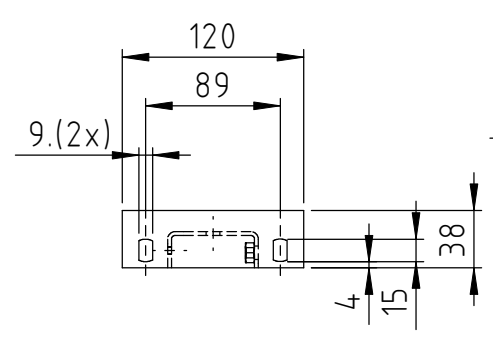
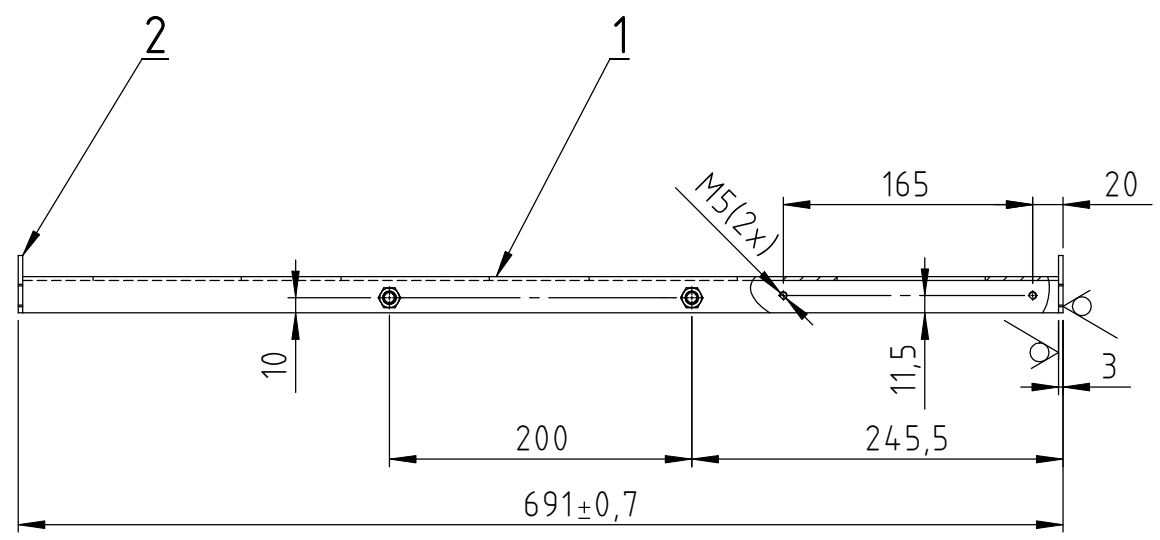
TYP: ES-505

**FRAME KIT**  
 RAM PODSTAVCE

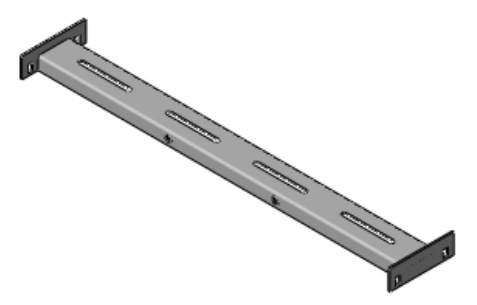
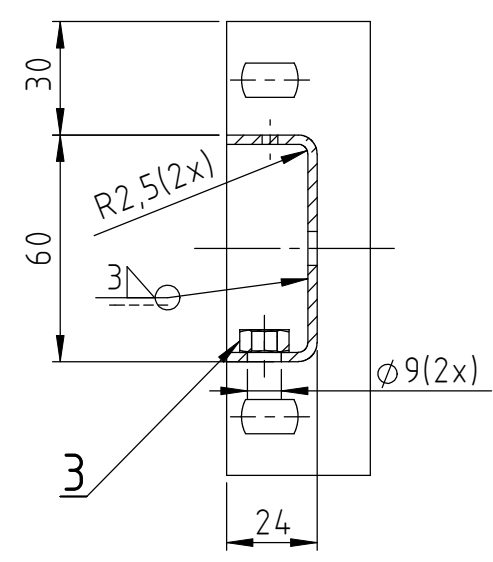
**04.9015.0.000**

LIST: 5/8

○ - POZICE 1



C-C  
(1:2)



POZ.	C. DILU	Nazev	Material	Ks
1	-	PRICKA	11 523 P2,5	1
2	-	PRIRUBA	11 523 P3	2
3	08.6700.8.000	MATICE M8 CSN 0214.01.02	-	2

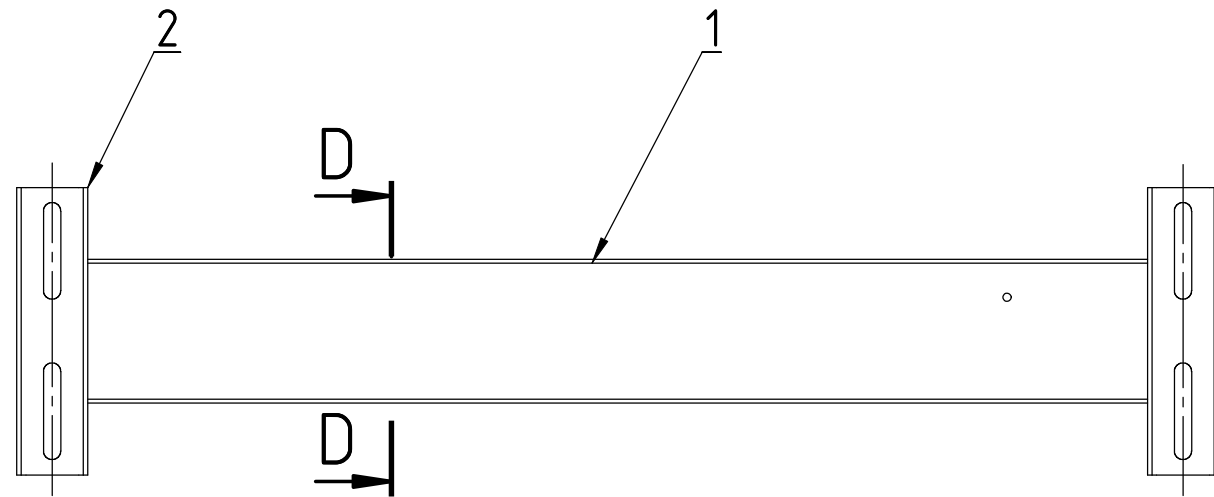
POVRCHOVA UPRAVA: NATER DLE PNM817081 RAL9002(BILA)	☉	MERITKO: 1:5	mm
TEPELNE ZPRACOVANI: -			

MATERIAL: -	<b>AMF REECE</b>		
-	TYP: ES-505		

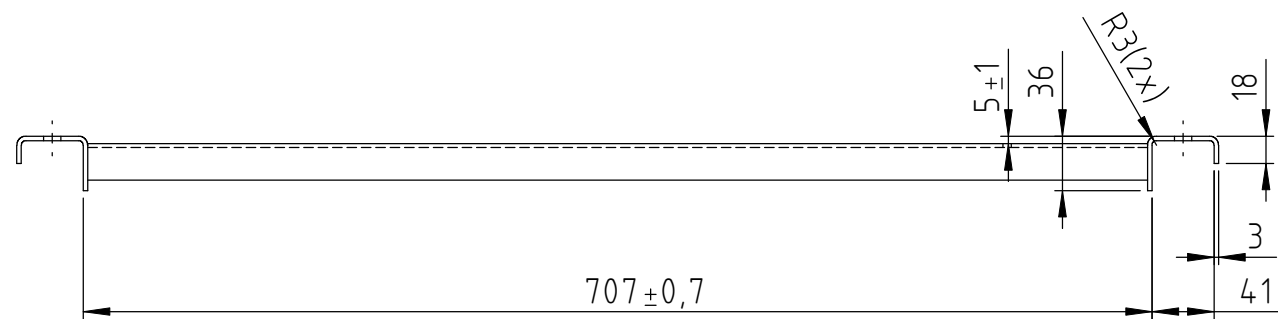
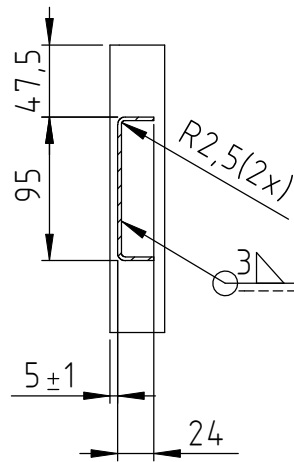
**NEODMERUJTE ROZMERY Z VYKRESU**  
 TENTO VYKRES JE VYLUČNE MAJETKEM AMF REECE. INFORMACE ZDE OBSAZENE SMI BYT POUZITY POUZE PRO PRIPRAVU NABIDKY NEBO DODAVKY PRO AMF REECE A NESMI BYT POSKYTNUTY NIKOMU TRETIMU ANI POUZITY PRO ZADNY JINY UCEL.

SCHVALIL: -	KOPII VYDAL: NAVRHL: HUBALEK	DATUM KOPIE: DATUM: 24.2.2009
TECHNOLOGICKY PROVERIL: -	DRSNOST POVRCHU: ISO 2768 m K	0.5..6 ±0.1 0...10° ±1° 6...120 ±0.2 >10° ±0°30'
12,5 / ✓	0.3	

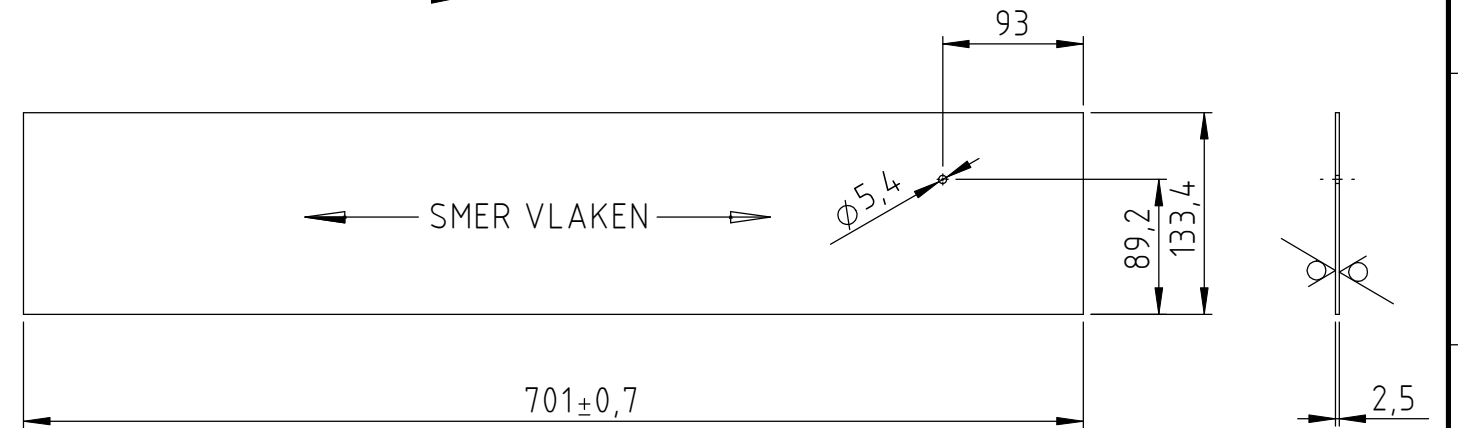
<b>FRAME KIT</b> RAM PODSTAVCE		LIST: 6/8
<b>04.9015.0.000</b>		



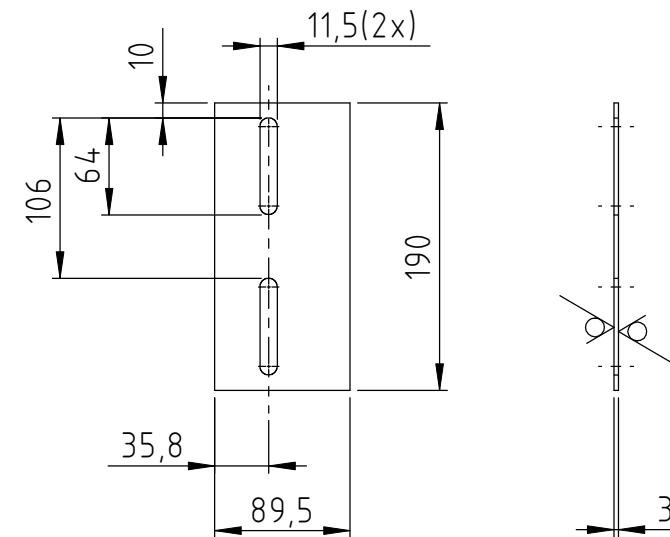
D-D



Q - POZICE 1



Q - POZICE 2



POZ.	C. DILU	Nazev	Material	Ks
1	-	PRICKA	11 523 P2,5	1
2	-	PRIRUBA	11 523 P3	2

POVRCHOVA UPRAVA: NATER DLE PNM817081 RAL9002(BILA)

TEPELNE ZPRACOVANI: -

MATERIAL: -

SCHVALIL:

TECHNOLOGICKY PROVERIL:

DRSNOST POVRCHU:

12,5 / 3

KOPII VYDAL:

NAVRHL: HUBALEK

ISO 2768 m K

0.5..6 ±0.1

6...120 ±0.2

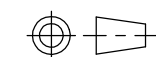
DATUM KOPIE:

DATUM: 24.2.2009

0...10° ±1°

>10° ±0°30'

0.3



MERITKO:

1:5



AMF REECE

TYP: ES-505

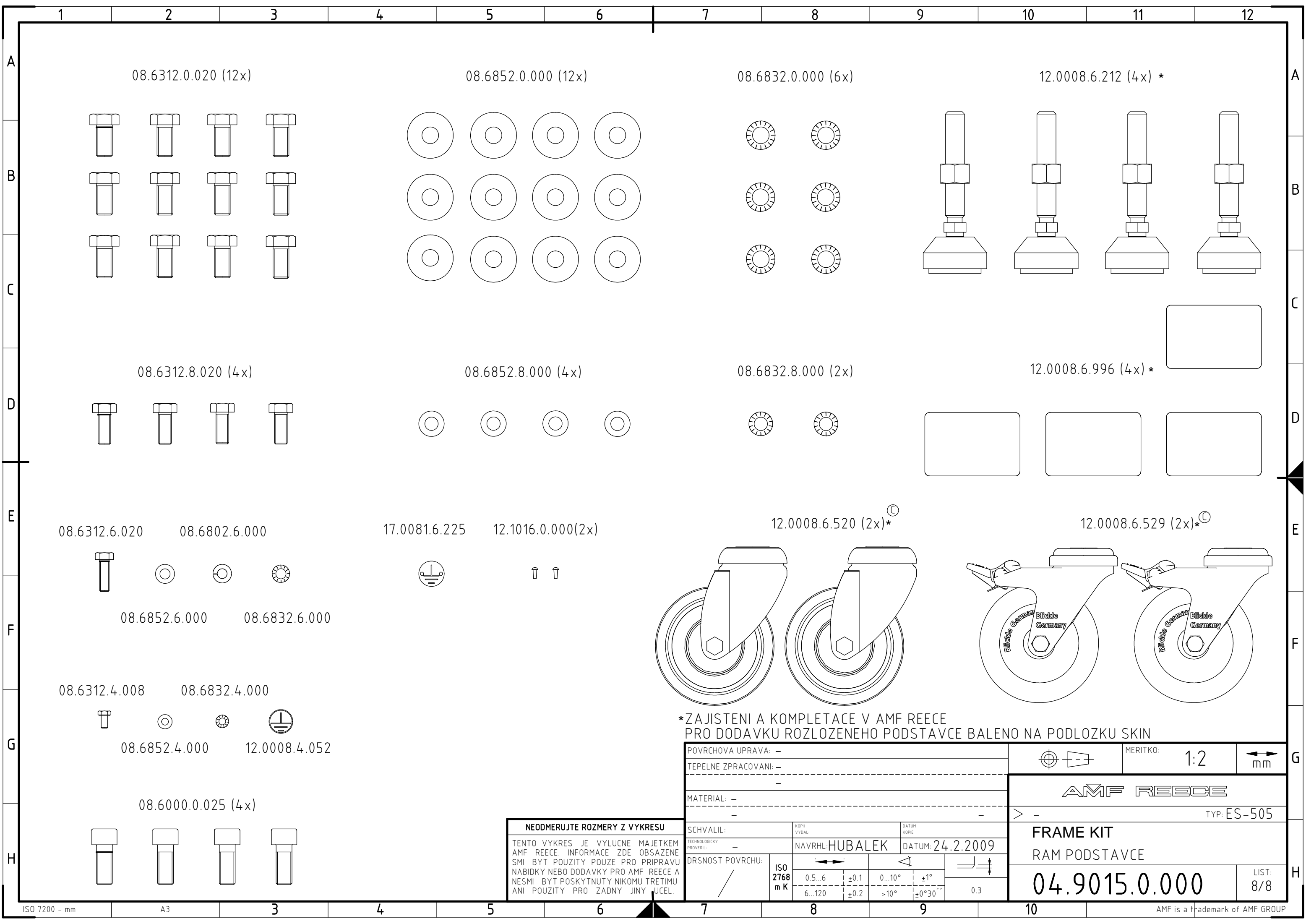
FRAME KIT  
RAM PODSTAVCE

04.9015.0.000

LIST:  
7/8

NEODMERUJTE ROZMERY Z VYKRESU

TENTO VYKRES JE VYLUČNE MAJETKEM AMF REECE. INFORMACE ZDE OBSAZENE SMI BYT POUZITY POUZE PRO PRIPRAVU NABIDKY NEBO DODAVKY PRO AMF REECE A NESMI BYT POSKYTNUTY NIKOMU TRETIMU ANI POUZITY PRO ZADNY JINY UCEL.

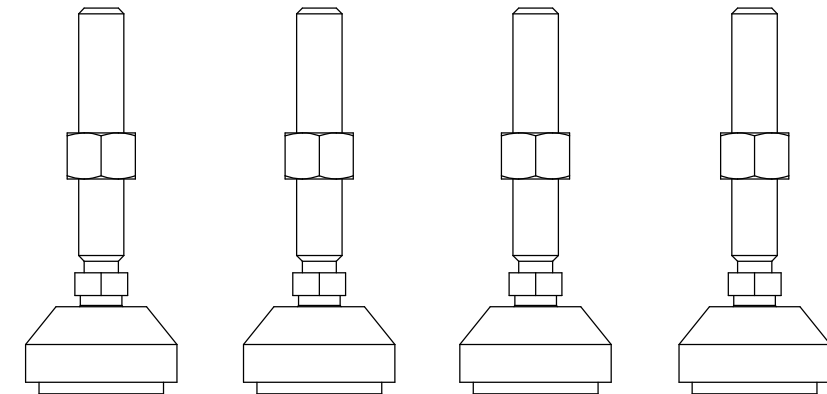
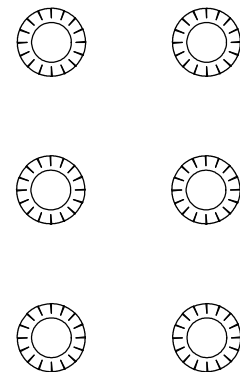
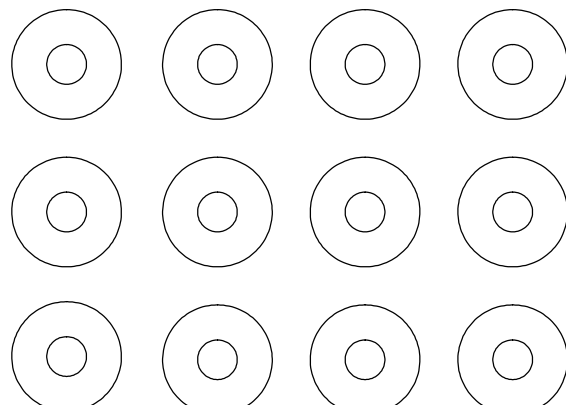
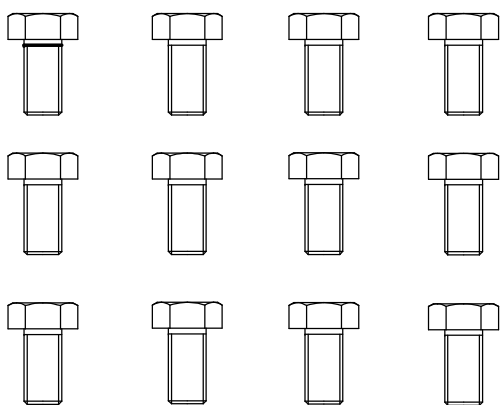


08.6312.0.020 (12x)

08.6852.0.000 (12x)

08.6832.0.000 (6x)

12.0008.6.212 (4x) \*

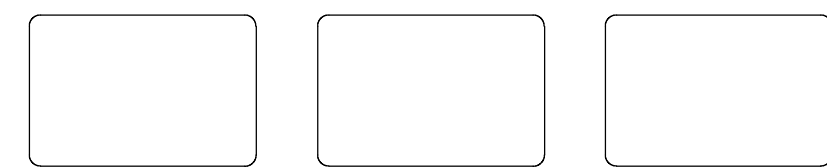
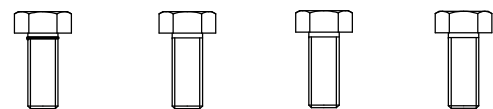


08.6312.8.020 (4x)

08.6852.8.000 (4x)

08.6832.8.000 (2x)

12.0008.6.996 (4x) \*



08.6312.6.020

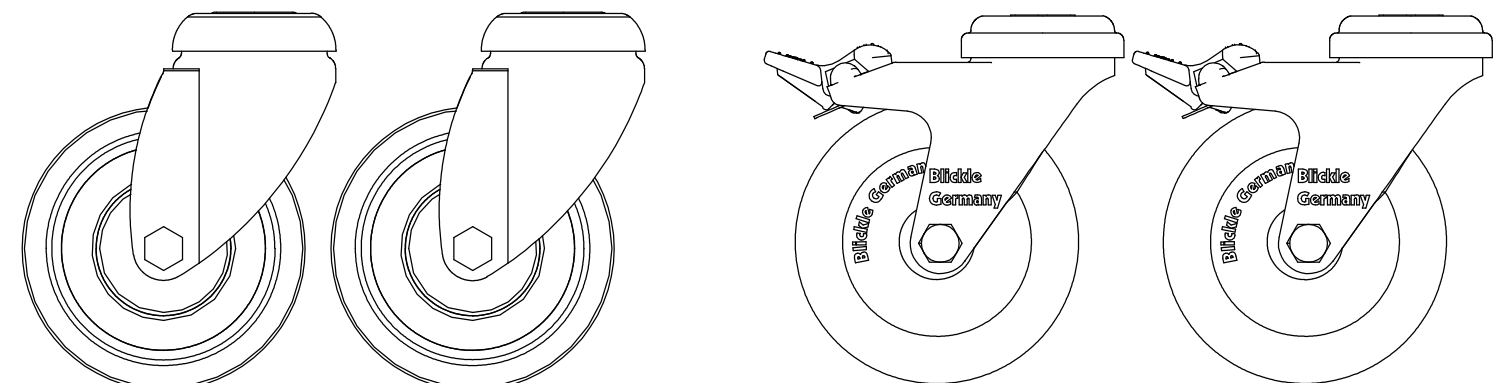
08.6802.6.000

17.0081.6.225

12.1016.0.000(2x)

12.0008.6.520 (2x)\*<sup>ⓐ</sup>

12.0008.6.529 (2x)\*<sup>ⓐ</sup>



08.6852.6.000

08.6832.6.000

08.6312.4.008

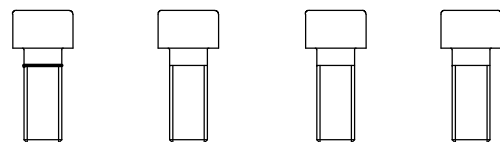
08.6832.4.000



08.6852.4.000

12.0008.4.052

08.6000.0.025 (4x)



\*ZAJISTENI A KOMPLETACE V AMF REECE PRO DODAVKU ROZLOZENEHOU PODSTAVCE BALENO NA PODLOZKU SKIN

**NEODMERUJTE ROZMERY Z VYKRESU**  
 TENTO VYKRES JE VYLUČNE MAJETKEM AMF REECE. INFORMACE ZDE OBSAZENE SMI BYT POUZITY POUZE PRO PRIPRAVU NABIDKY NEBO DODAVKY PRO AMF REECE A NESMI BYT POSKYTNUTY NIKOMU TRETIMU ANI POUZITY PRO ZADNY JINY UCEL.

POVRCHOVA UPRAVA: -	MERITKO: 1:2		mm
TEPELNE ZPRACOVANI: -	AMF REECE		
MATERIAL: -	TYP: ES-505		
SCHVALIL: -	KOPII VYDAL: NAVRHL: HUBALEK	DATUM KOPIE: 24.2.2009	FRAME KIT RAM PODSTAVCE
TECHNOLOGICKY PROVERIL: -	DRSNOST POVRCHU: ISO 2768 m K	0.5..6 ±0.1 0...10° ±1° 6...120 ±0.2 >10° ±0°30'	
0.3		04.9015.0.000	
			LIST: 8/8