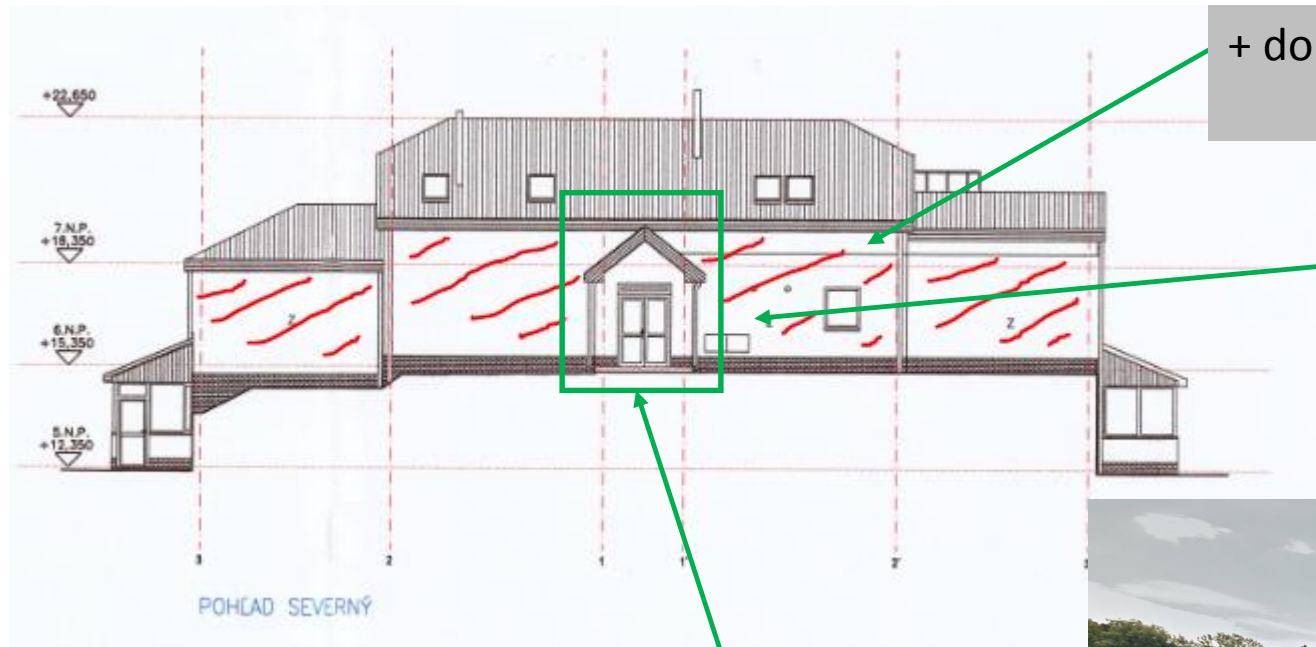


Severna strana



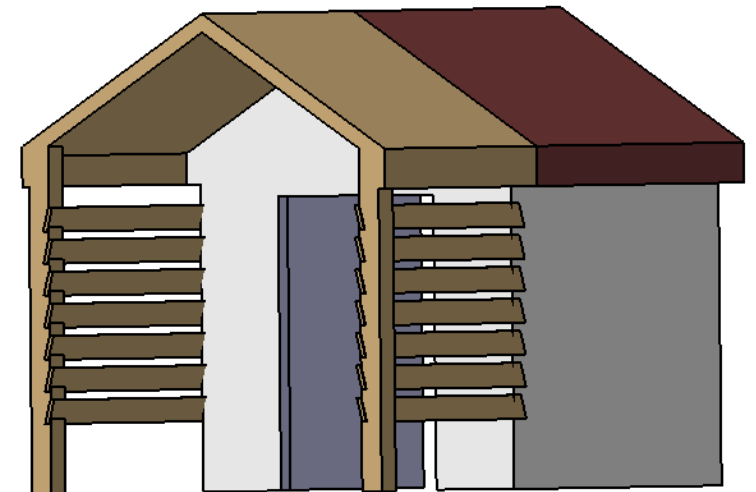
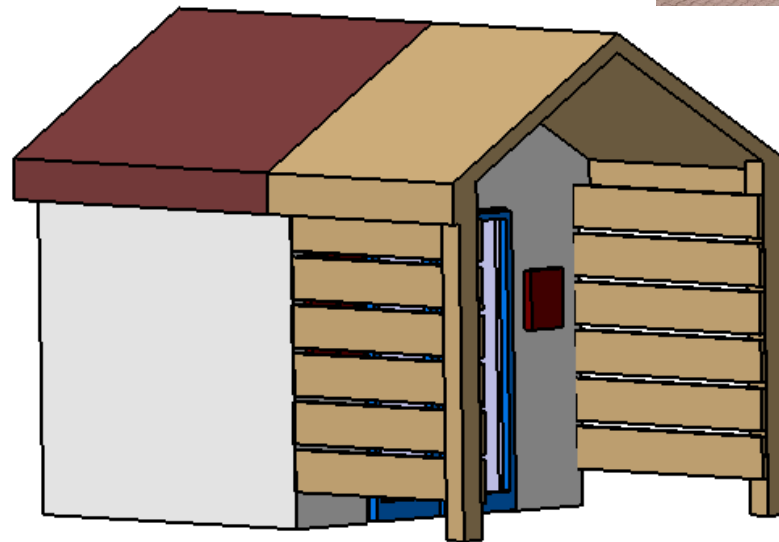
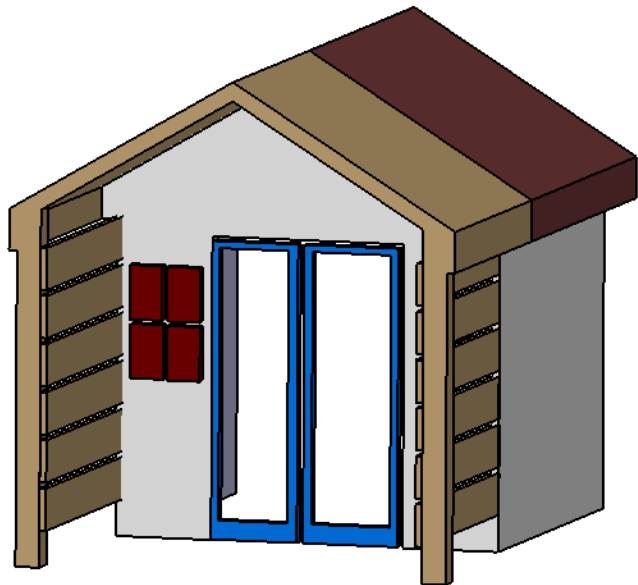
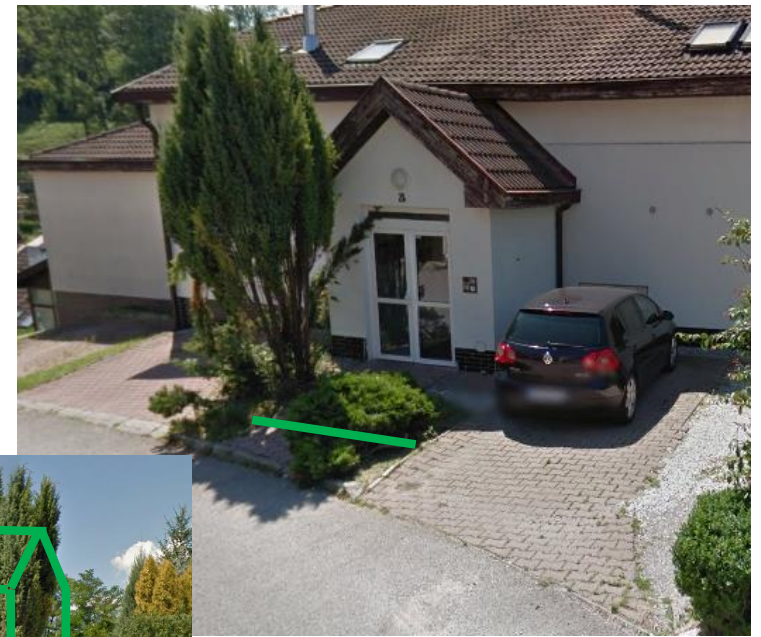
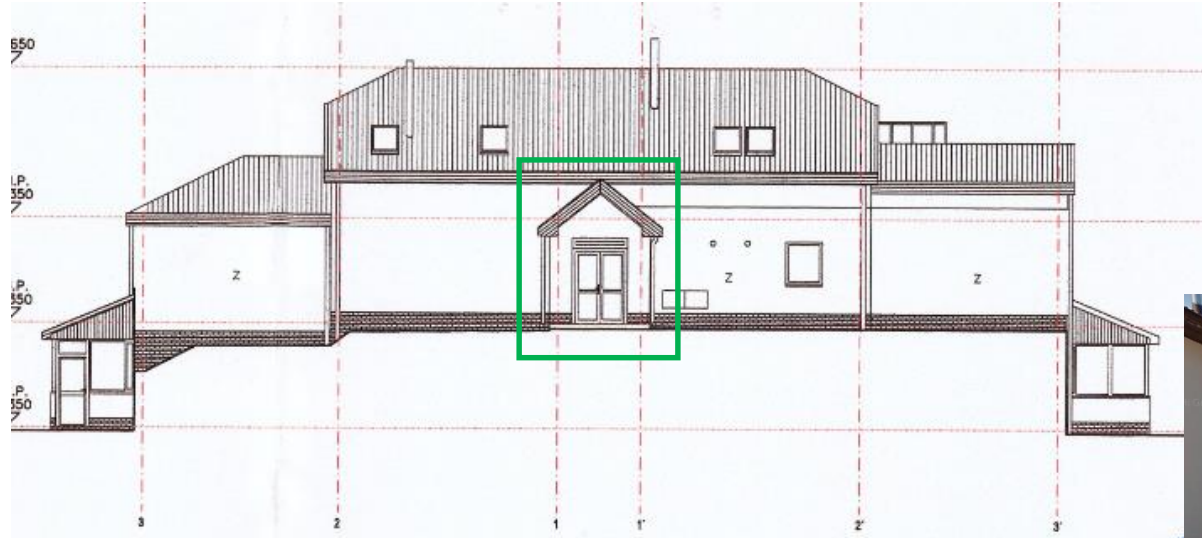
+ dorobenie "zateplenia" cca 40cm vrch.

Oprava fasady ,
namalovanie.

Zastresenie ,pozri dalsi
list.



Severna strana
Navrh zastresenia.



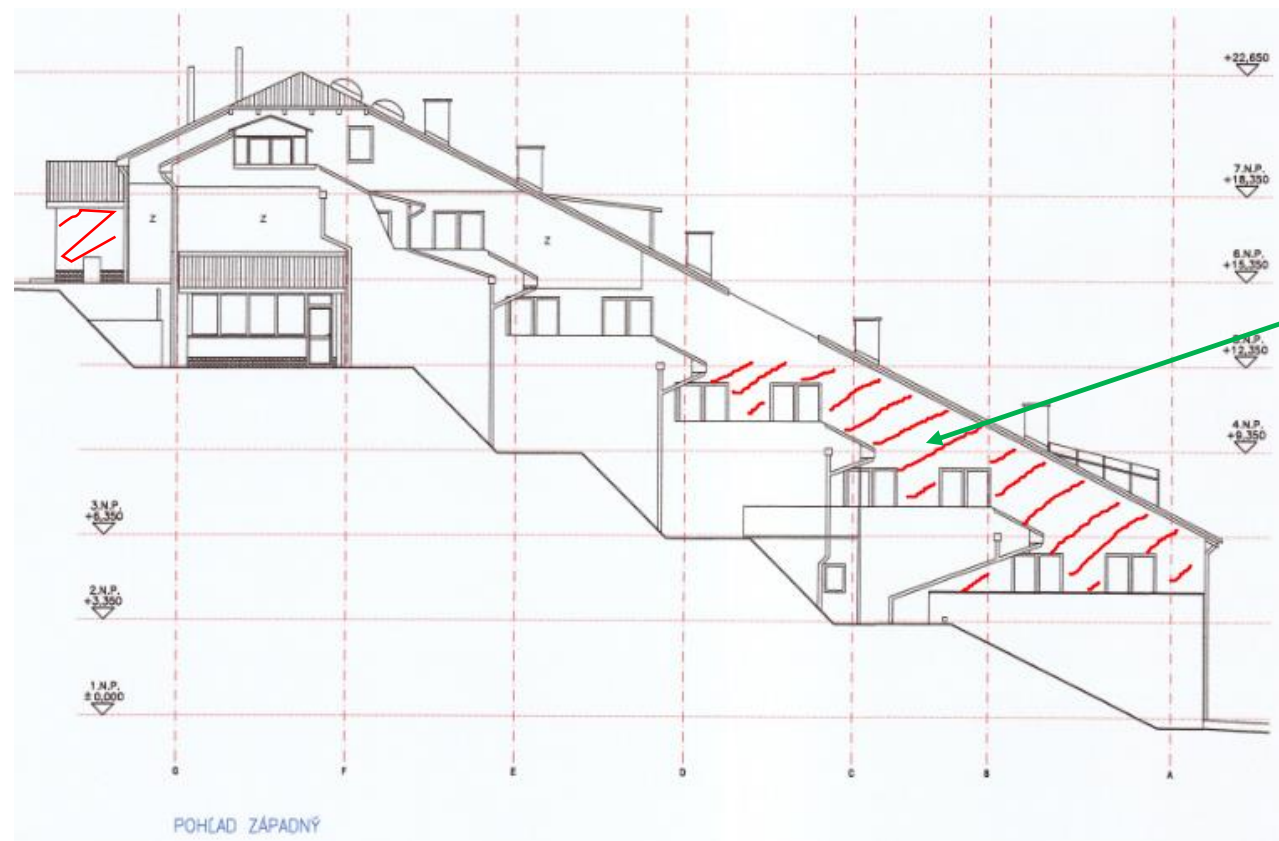
Vychodna strana



Oprava fasady (sietka)
, namalovanie.



Zapadna strana



Oprava fasady (sietka)
, namalovanie.

Podbitie strechy (odstranenie dosiek, instalacia usb dosiek, fasada, oplechovanie)

