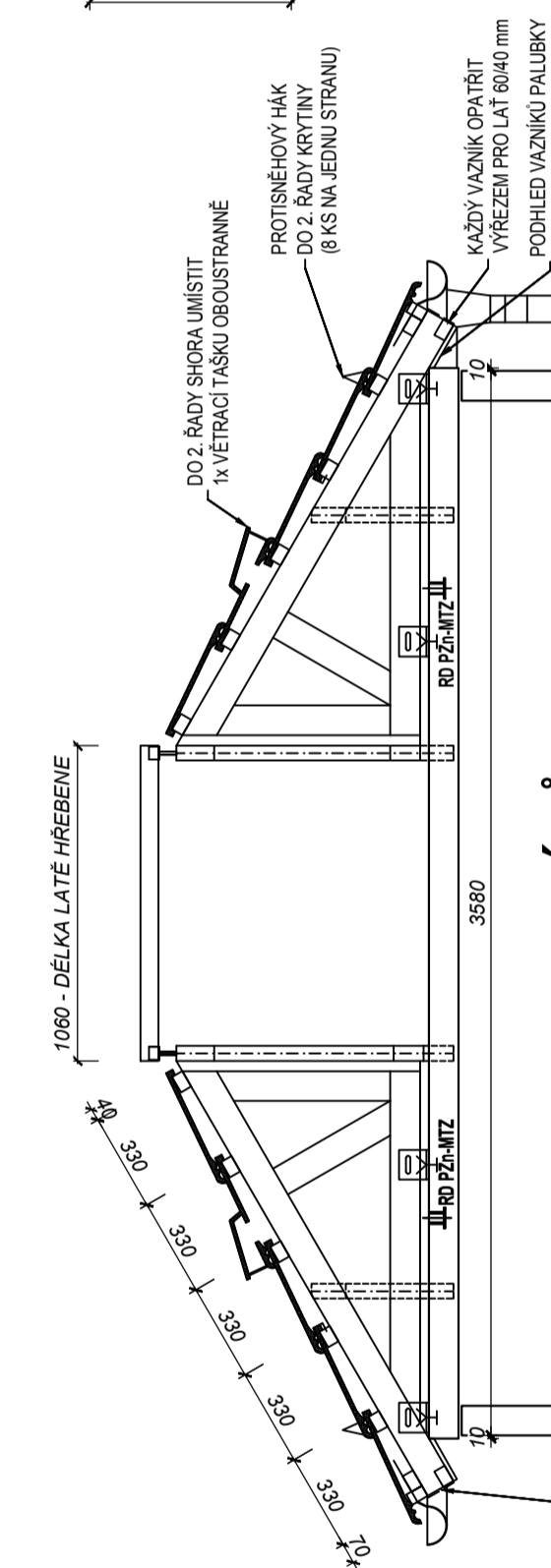
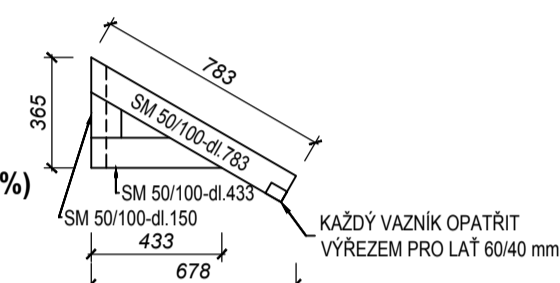
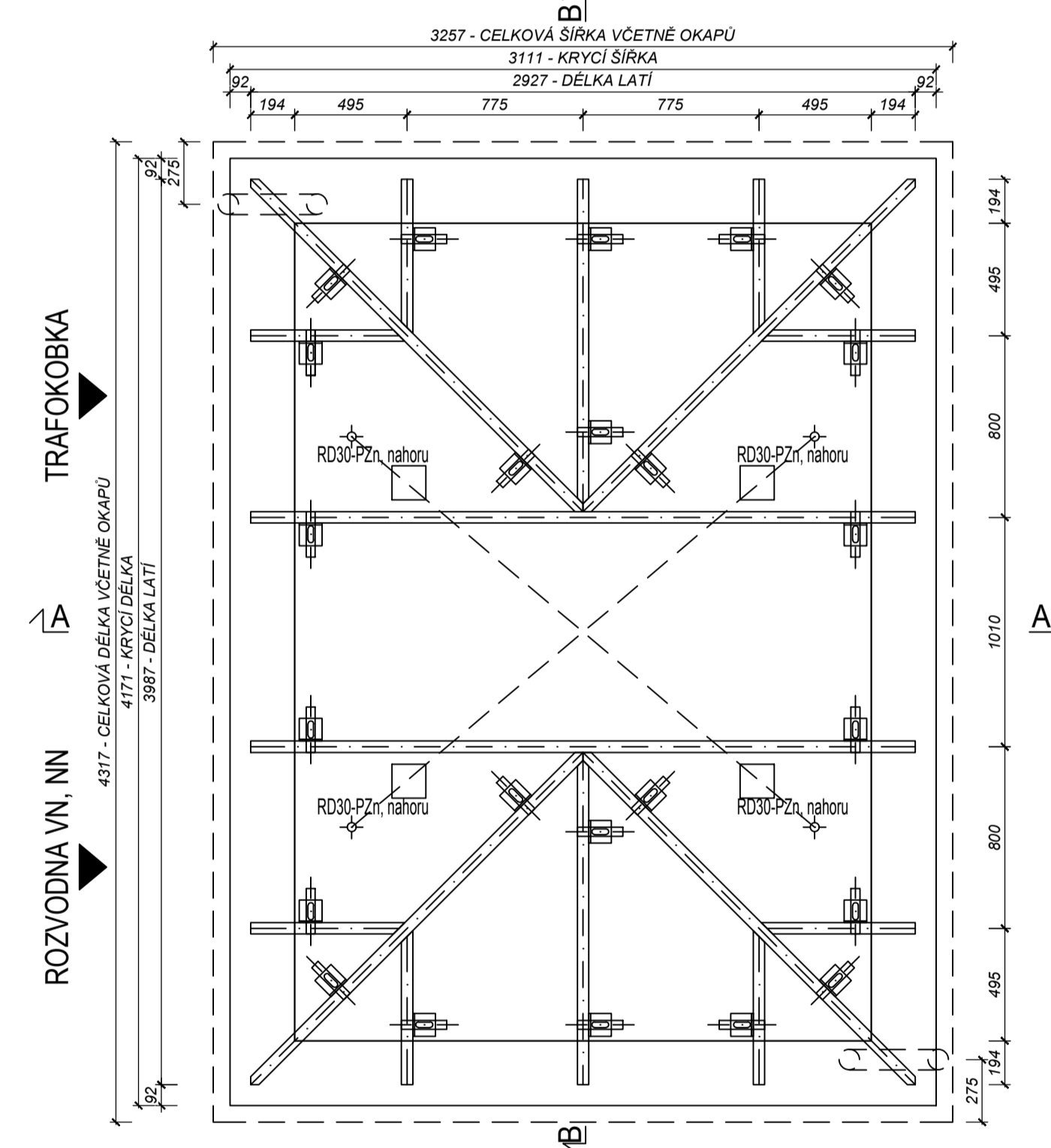
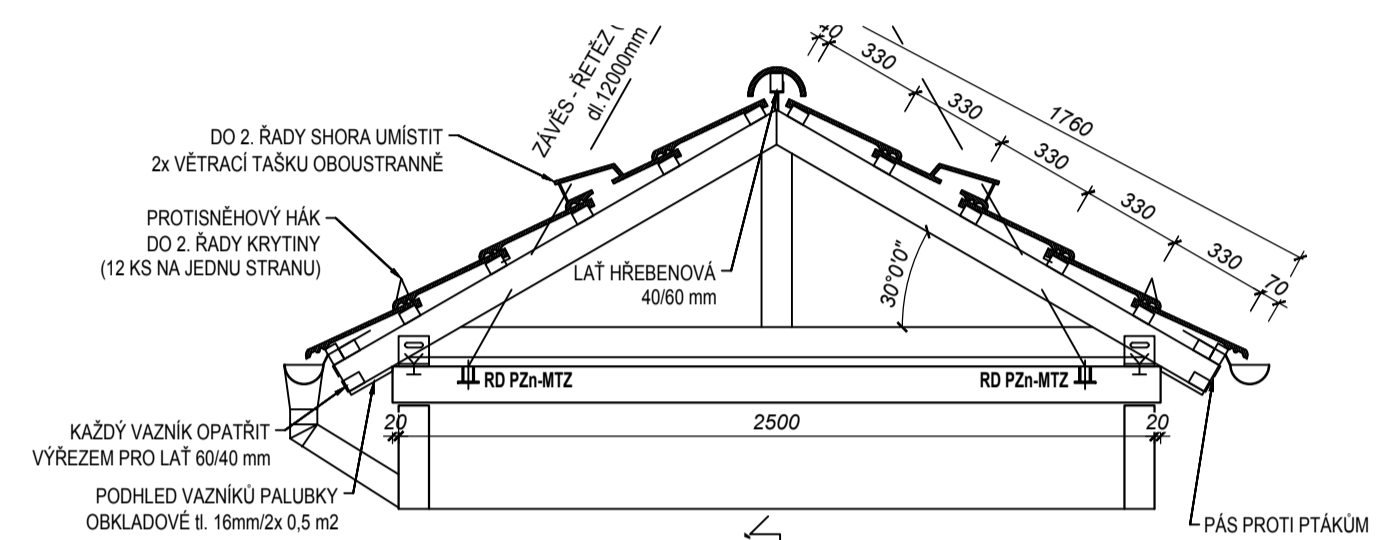


### STŘEŠNÍ VAZNÍK

**SKLON 30° - 4ks-levý, 4ks-pravý**  
**DŘEVO SMRK (SM), tř. I**  
**FOŠNA 50/100 mm**  
 - dl. 783 mm - 1 ks  
 - dl. 433 mm - 2 ks  
 - dl. 150 mm - 1 ks  
 - dl. 1500 mm / 1 ks (+ 10 %)

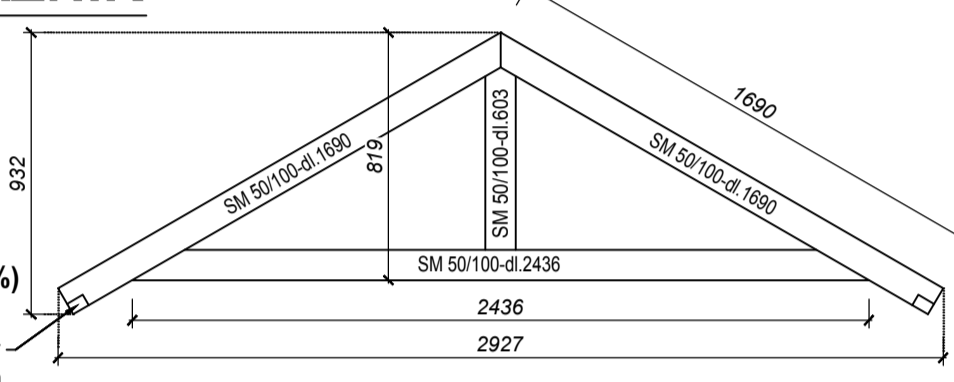


### SESTAVA VAZNÍKŮ, OKAPŮ

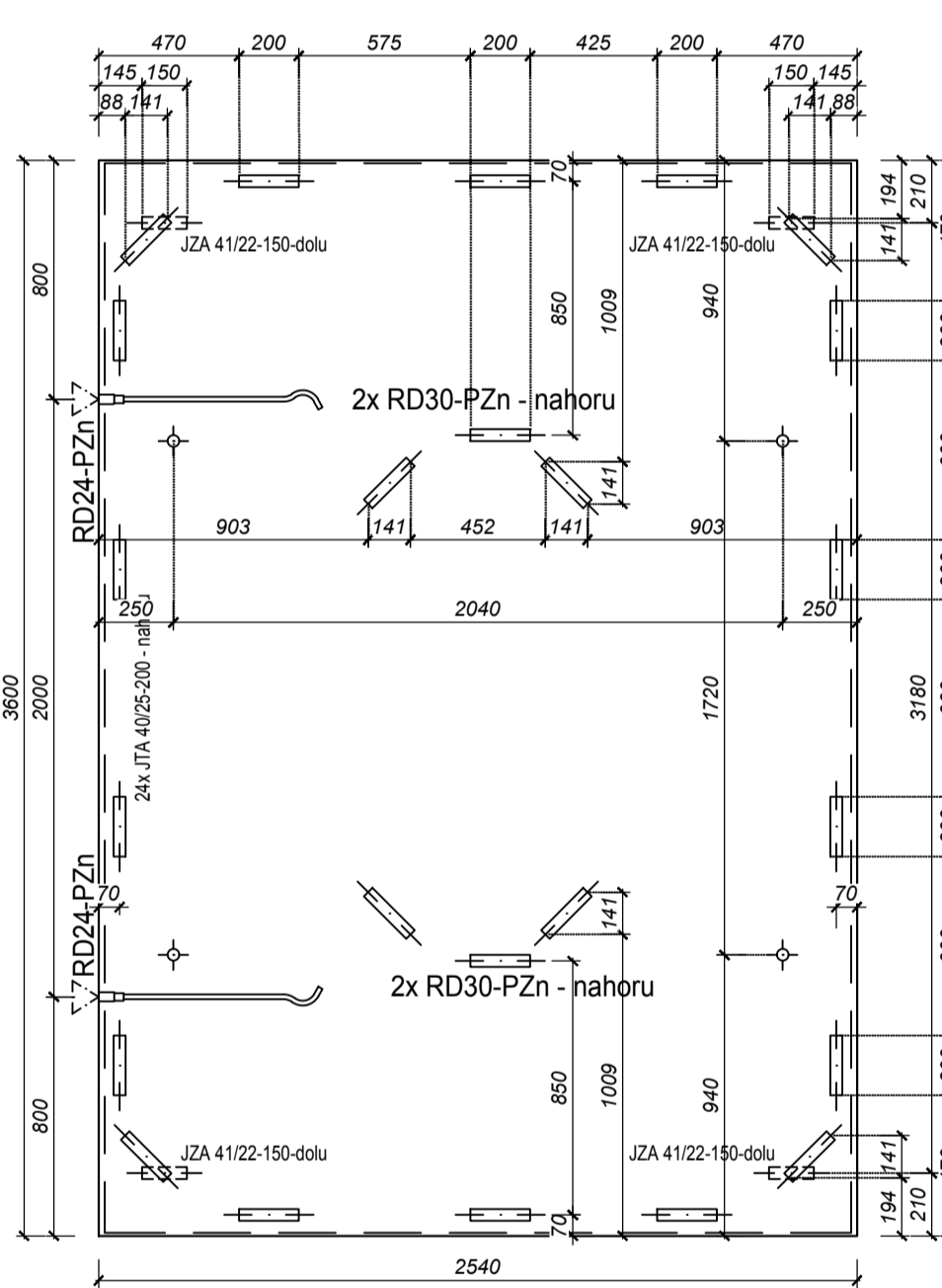


### STŘEŠNÍ VAZNÍK

**SKLON 30° - 5ks**  
**DŘEVO SMRK (SM), tř. I**  
**FOŠNA 50/100 mm**  
 - dl. 2436 mm - 1 ks  
 - dl. 1690 mm - 2 ks  
 - dl. 603 mm - 1 ks  
 - dl. 7060 mm / 1 ks (+ 10 %)

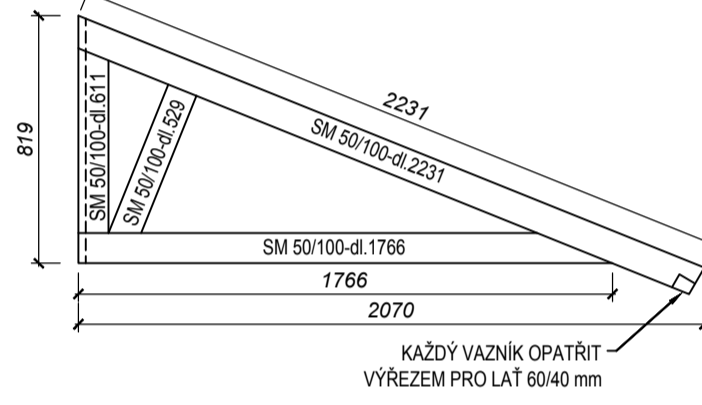


### DPL tl. 120mm - 1ks POHLED SHORA



### STŘEŠNÍ VAZNÍK

**SKLON 21°55' - 4ks**  
**DŘEVO SMRK (SM), tř. I**  
**FOŠNA 50/100 mm**  
 - dl. 2231 mm - 1 ks  
 - dl. 1766 mm - 1 ks  
 - dl. 611 mm - 1 ks  
 - dl. 529 mm - 1 ks  
 - dl. 5650 mm / 1 ks (+ 10 %)



### STŘEŠNÍ VAZNÍK

**SKLON 30° - 2ks**  
**DŘEVO SMRK (SM), tř. I**  
**FOŠNA 50/100 mm**  
 - dl. 1649 mm - 1 ks  
 - dl. 1183 mm - 1 ks  
 - dl. 583 mm - 1 ks  
 - dl. 455 mm - 1 ks  
 - dl. 4260 mm / 1 ks (+ 10 %)

