

SANGO BUILDING

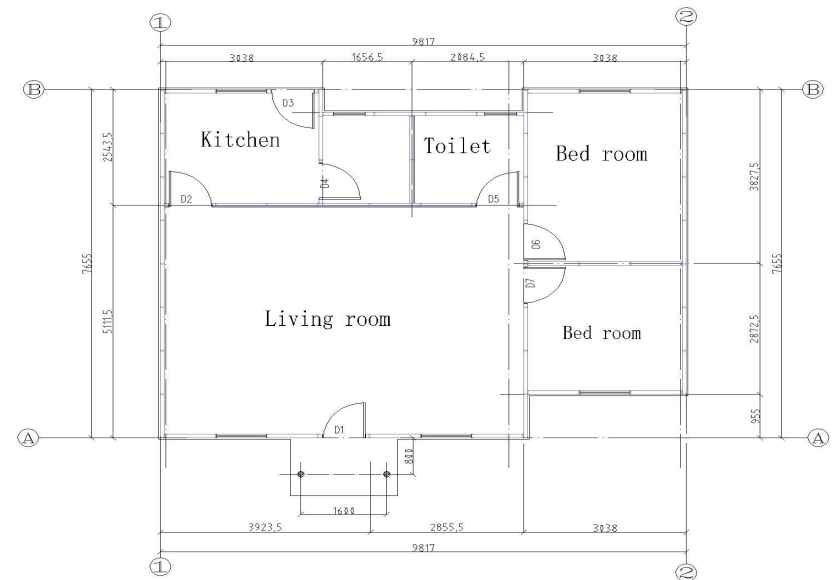
Prefab House Catalogue



SANGO BUILDING

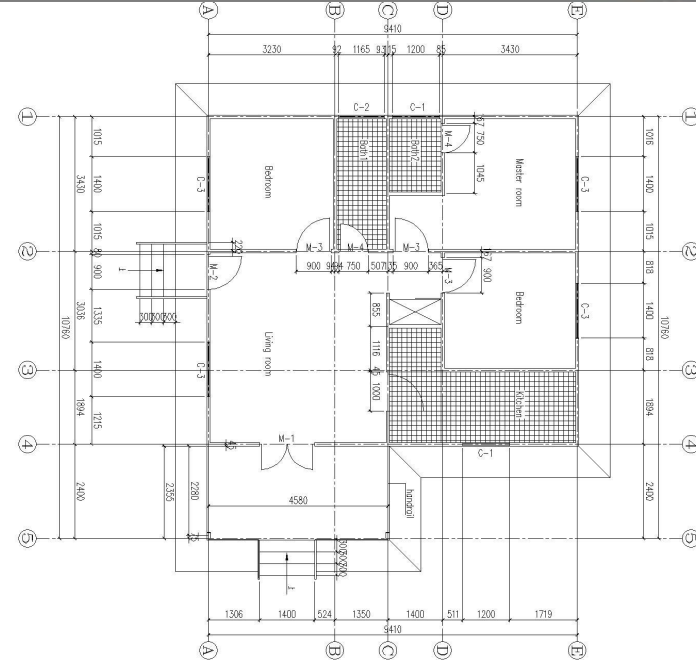
— Prefabricated house expert

Typical Prefab House SG-M001



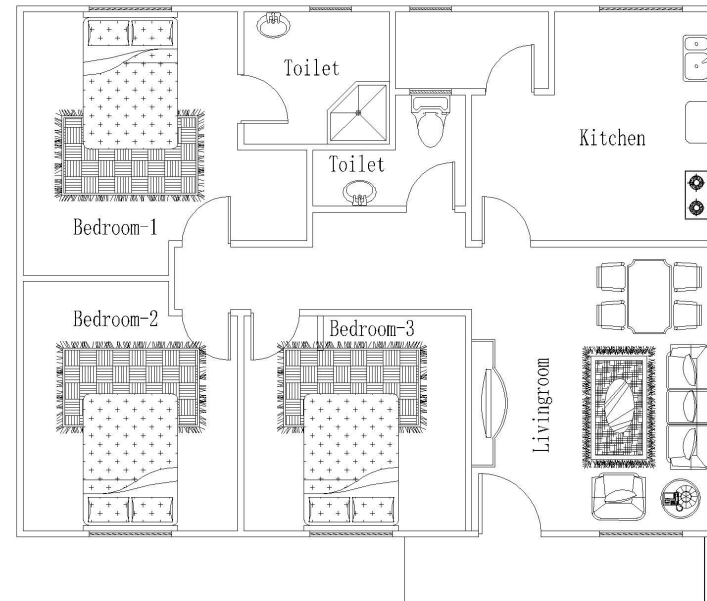
- ① High Cost-effective Model.
- ② Reference Price: \$7,000 FOB Qingdao,China
- ③ Area:71m². 2Bedroom,1 Bathroom,1,kitchen ,1 living room.
- ④ Material: steel frame+75mm EPS sandwich panel Wall and roof panels.
- ⑤ Basic Plumbing and Electric Systems
- ⑥ Usage scope: Widely used as prefab house, government project for large quantities projects

Typical Prefab House SG-M002



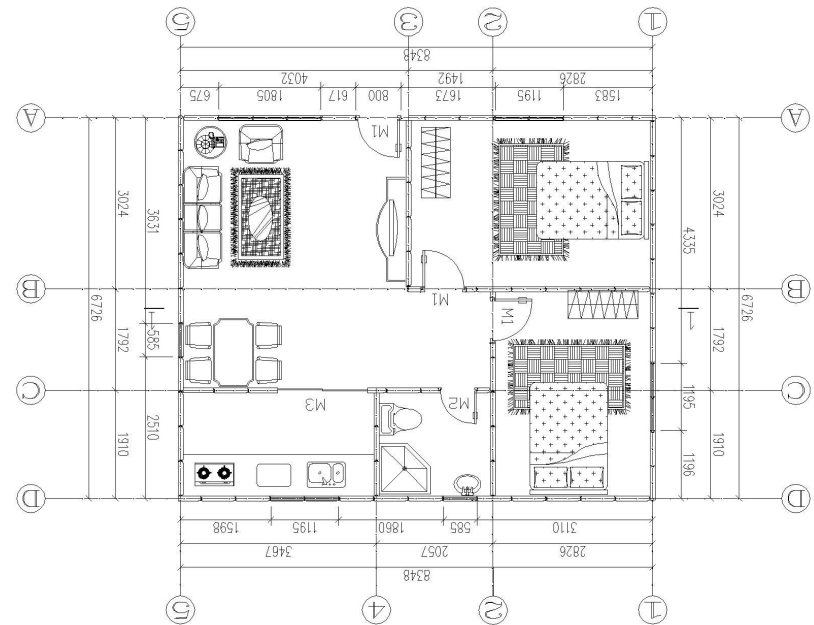
- ① HIGH QUALITY VILLA Model
- ② \$22000/set FOB Qingdao port
- ③ Area:80m². 2Bedroom,1 Bathroom,1,kitchen ,1 living room.
- ④ Material: steel C section frame+100mm fiberglass Composite Wall and roof panels
- ⑤ Basic Plumbing and Electric Systems
- ⑥ Usage scope: Used as prefab Villa, Travelling Beach house.

Typical Prefab House SG-M003



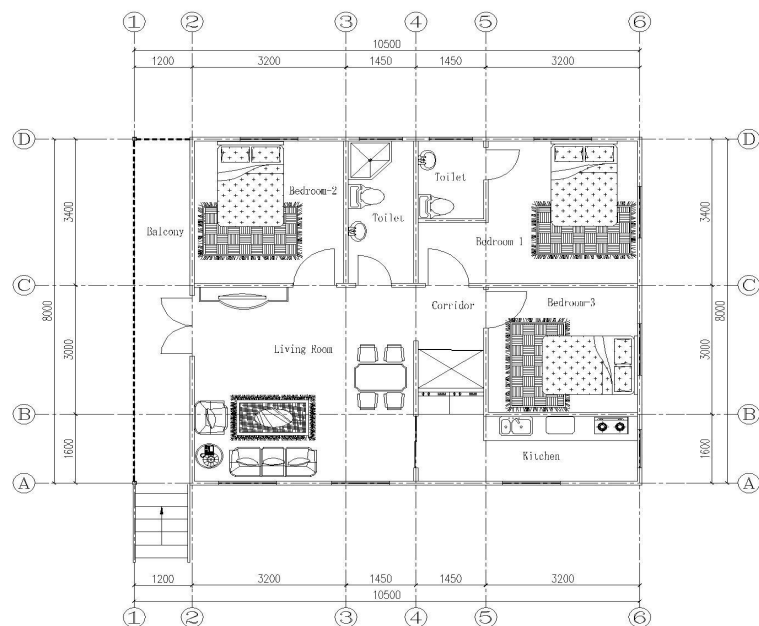
- ① Middle Class Model
- ② Reference Price:\$10000/set FOB Qingdao port
- ③ Area:76m². 3 Bedroom,1 Bathroom,1,kitchen ,1 living room
- ④ Material: steel frame+90mm Cement Composite Wall and roof panels
- ⑤ Basic Plumbing and Electric Systems
- ⑥ Usage scope: Normally House Apartment.

Typical Prefab House SG-M004



- ① Middle Class Model
- ② Reference Price:\$7000/set FOB Qingdao port
- ③ Area:56m². 2 Bedroom,1 Bathroom,1,kitchen ,1 living room
- ④ Material: steel frame+90mm Cement Composite Wall and roof panels
- ⑤ Basic Plumbing and Electric Systems
- ⑥ Usage scope: Normally House Apartment.

Typical Prefab House SG-M005



- ① lifelong Cement Class Model
- ② Reference Price:\$9500/set FOB Qingdao port
- ③ Area:85m². 3 Bedroom,2 Bathroom,1,kitchen ,1 living room
- ④ Material: steel frame+90mm Cement Composite Wall and roof panels
- ⑤ Basic Plumbing and Electric Systems
- ⑥ Usage scope: Lifelong House Apartment.

Square tube beam



Square tube purlin



Square tube column



U ground and lock channel



Collar roof



Sill anchor

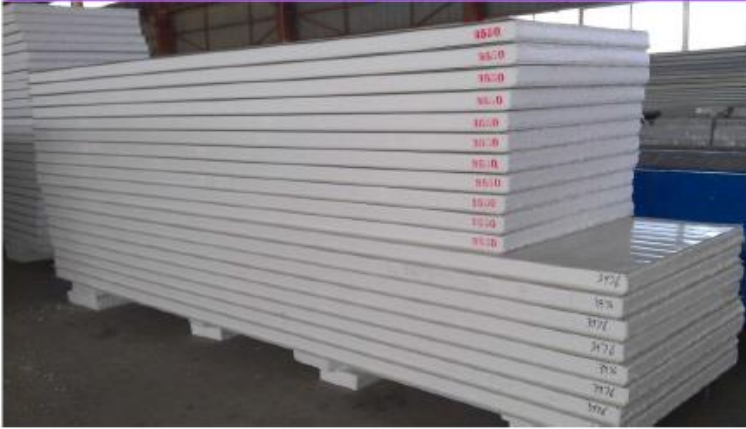


Roof panel



Material : Wall and Ceiling

EPS sandwich panel



Fiberglass sandwich panel



Rock wool sandwich panel



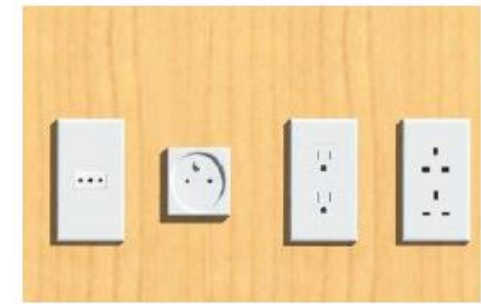
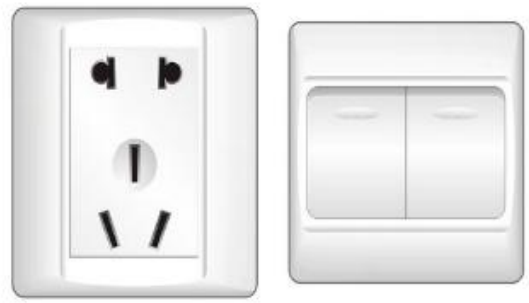
PU sandwich panel



Material : Window & Door



Material : Electrical System



Material:Kitchen& Bathroom accessory

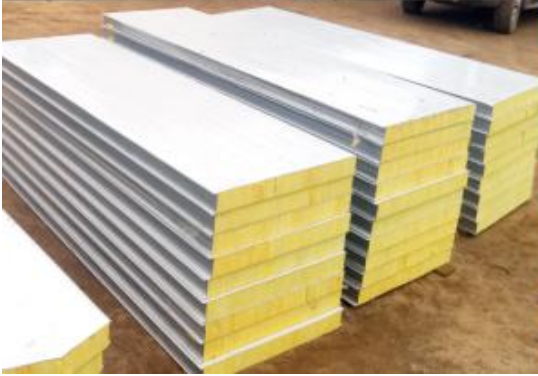


One-Stop Service

Designing



Manufacturing



Guiding Construction

SANGO BUILDING

Prefabricated house expert

Installation Steps

1 Steel structure



2 Wall and roof panel



3 Ceiling



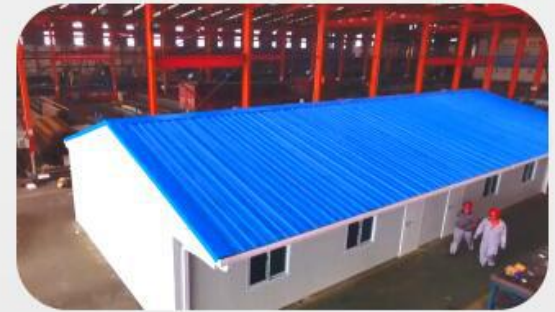
4 Window and door



5 Edge

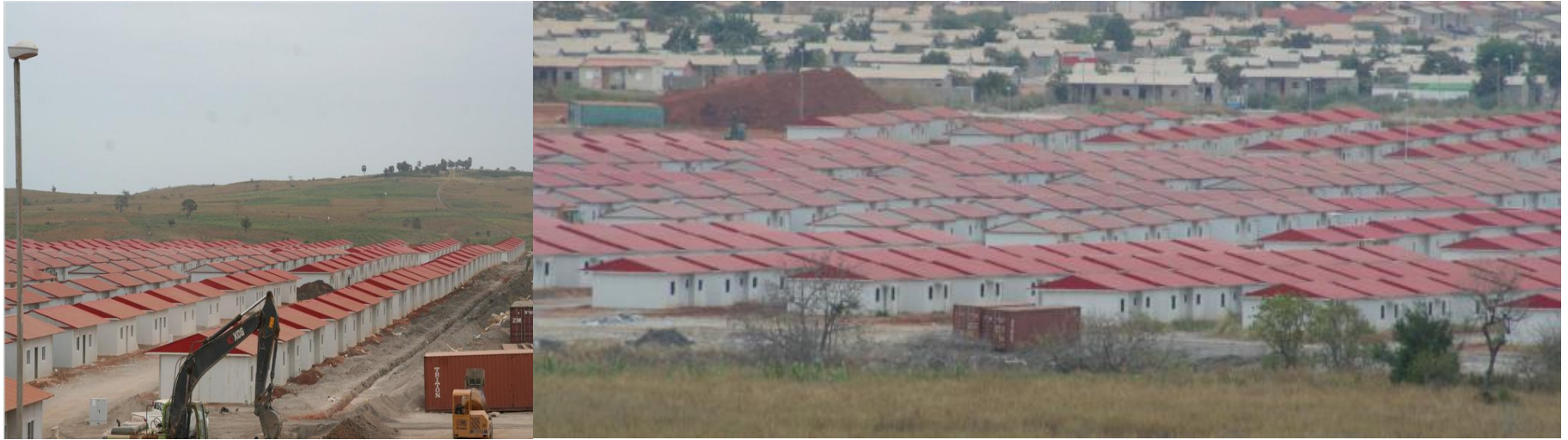


6 Finished



Project information

Angola Prefab house: Total 2000 units



Venezuela Prefab house: Total 15000 units



SANGO BUILDING

Prefabricated house expert

Project information

Madagascar Classroom: Total 436 units



South Africa Classroom



SANGO BUILDING

Prefabricated house expert

Project information

Bosnian Villa



Kenya Villa



SANGO BUILDING

Prefabricated house expert

Project information

Angola prefab house



Sri Lanka Villa



SANGO BUILDING

Prefabricated house expert

Project information

Office



SANGO BUILDING

Prefabricated house expert

Project information

Dormitory



SANGO BUILDING

Prefabricated house expert

Welcome to visit our company

Qingdao Sango Building
No.268 Sancheng Road, Pingdu, Qingdao
city, China
Tel/Whatsapp/Wechat/Skype:008618253285182
Email:851766822@qq.com
www.sangobuilding.com