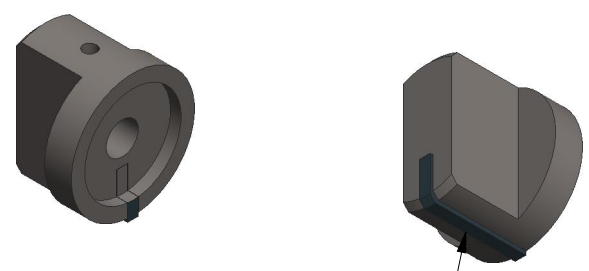
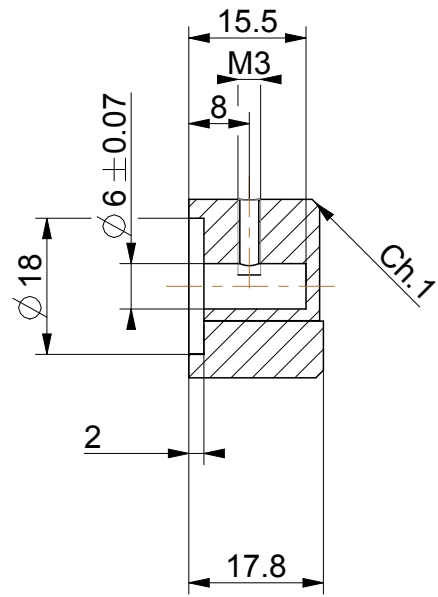
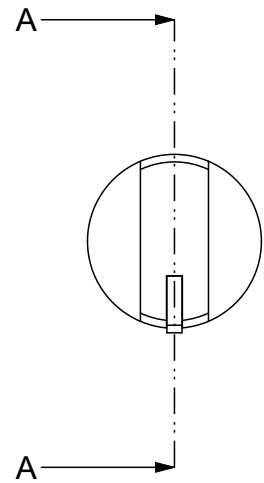
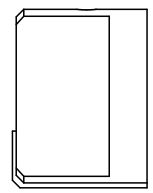
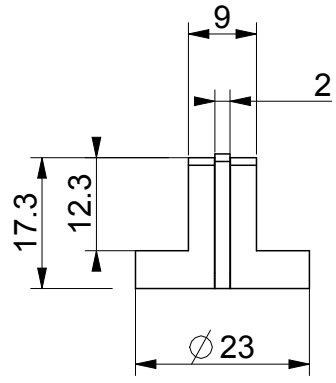


MODIFICATIONS			
REV.	DESCRIPTION	AUTEUR	DATE
C	R5 supprimé	T.CHIN	18/12/2017

NOTA :
 Apparence uniforme
 absence de rayures et traces d'usinage
 Microbillage 70µm



Pièce POM noir rapportée collée
 Colle bi-composant
 Appliquer une très faible dose
 pour éviter bavures



COUPE A-A

MATIERE/MATERIAL		INOX 316L		MASSE /WEIGHT	TOL. GEN. /GEN. TOL.	ECH. /SCALE	FORMAT	
TRAITEMENT/TREATMENT		--		--	ISO 2768-mk	1.000	A4	
FINITION/FINISH		--		APPROUVE/APPROVED				DATE
DESSINE/DRAWN	DATE	VERIFIE/CHECKED	DATE	APPROUVE/APPROVED				DATE
T.CHIN	11/12/2017	C.ECHAVE	11/12/2017					11/12/2017
TITRE/TITLE	Bouton rotatif							
REFERENCE							REV.	PAGE
MEC.161964.280.1							C	1/1