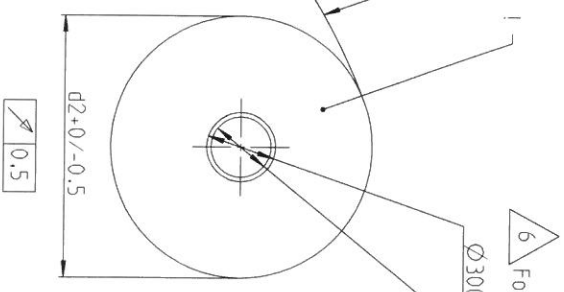
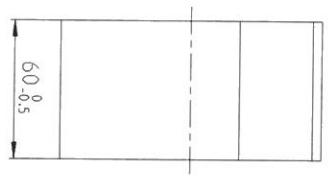


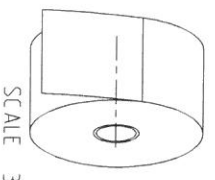
Safe handling : max burr height : ±0.1mm
 Manufacture security : Bavure Max
 Tolerances : ISO 2768-mk Unless specified
 Tol érances : Par défaut

±0.5	>6	>30	>120	>400	>1000	>2000	ALL material must be RoHS compatible (2002/95/EC)
-6	-30	-120	-400	-1000	-2000	-4000	Produit soumis à la directive RoHS (2002/95/EC)
±0.1	±0.2	±0.3	±0.5	±0.8	±1.2	±2	

5 STAMPS ONLY ALLOWED ON THIS SIDE !
 THERMAL SENSITIVE SIDE



6 For 906691-006 and 906691-007 use a PVC center roll



906691

paper weight : 70+/- 5 gr/m²
 thickness: 0.075+/- 0.005mm
 image colour: black
 initiation temperature: 65 degr max
 Saturation temp: 78-83 °C

French-english text on back of paper (colour red):
 La non utilisation du papier pr étonis é par
 la société Tokheim exclut la couverture de
 toute la garantie et contral de maintenance.

The use of paper not recommended by
 Tokheim excludes all guarantees and
 maintenance contracts coverage

German W&M text on back of paper:
 Verkauf der Kraft und Schmierstoffe in Namen
 und fuer Rechnung der Lieferfirma- incl. queltige MWSt.
 Daten aus gereichen Anlagen sind zur besonderen
 kennzeichnung in Sterne eiggeschlossen.
 Im verkaufspreis fuer kraftstoffe is der gesetzliche
 Bevorratungsbeitrag enthalten

	D2	DESCRIPTION	DESCRIPTIONFR	MATERIAL	REPLACE	REPLACE	SPECIFICATION	Paper length (m)
906691-001	95.000	PAPER ROLL Ø95	ROLL. PAPIER Ø95	-	5566000084	-	-	90
906691-002	113.000	PAPER ROLL Ø113	ROLL. PAPIER Ø113	-	904.193	-	-	127
906691-003	95.000	PAPER ROLL Ø95 W&M	ROLL. PAPIER Ø 95	-	9604976170	German W&M back	-	90
906691-004	113.000	PAPER ROLL Ø113 W&M	ROLL. PAPIER Ø113	-	904.194	German W&M back	-	127
906691-005	160.000	PAPER ROLL Ø160	ROLL. PAPIER Ø160	-	-	-	-	255
906691-006	200.000	PAPER ROLL Ø200	ROLL. PAPIER Ø200	-	-	-	-	400
906691-007	160.000	PAPER ROLL Ø160 Tok	ROLL. PAPIER Ø160 Tok	-	-	French text on back	-	255
906691-008	113.000	PAPER ROLL Ø113 Tok	ROLL. PAPIER Ø113 Tok	-	-	French text on back	-	127

Material/Matière:
 Surface treatment/Protection-traitement:

Nr	DATE	D. C. A.	REVISIONS/RÉVISIONS	ECN	Nr	DATE	D. C. A.	REVISIONS/RÉVISIONS	ECN
6	27/07/11	MA	EA	EO					
Change cardboard center roll to PVC center roll for -006 and -007									
5	27/01/10	BJ	MA	Mdl					
Added remark "stamps only allowed on this side"									
4	07/02/08	MA	RP	Mdl					
-007/-008 added -paper length added									
3	03/02/06	MA	EW	Mdl					
-006 added									
2	17/10/04	MA	EW	WB					
Versions -003/-004/-005 added to drawing									

TOKHEIM Europe & Africa
 22-01-2004

Scale/ Echelle: 1/2 Rev 6
 Drawn by/ Dessiné par: NA
 Checked by/ Vérifié par: EW
 Approved by/ Approuvé par: Mdl

Release date: 11-11-2011

Dimensions: mm A3
 Sheet: 1/1