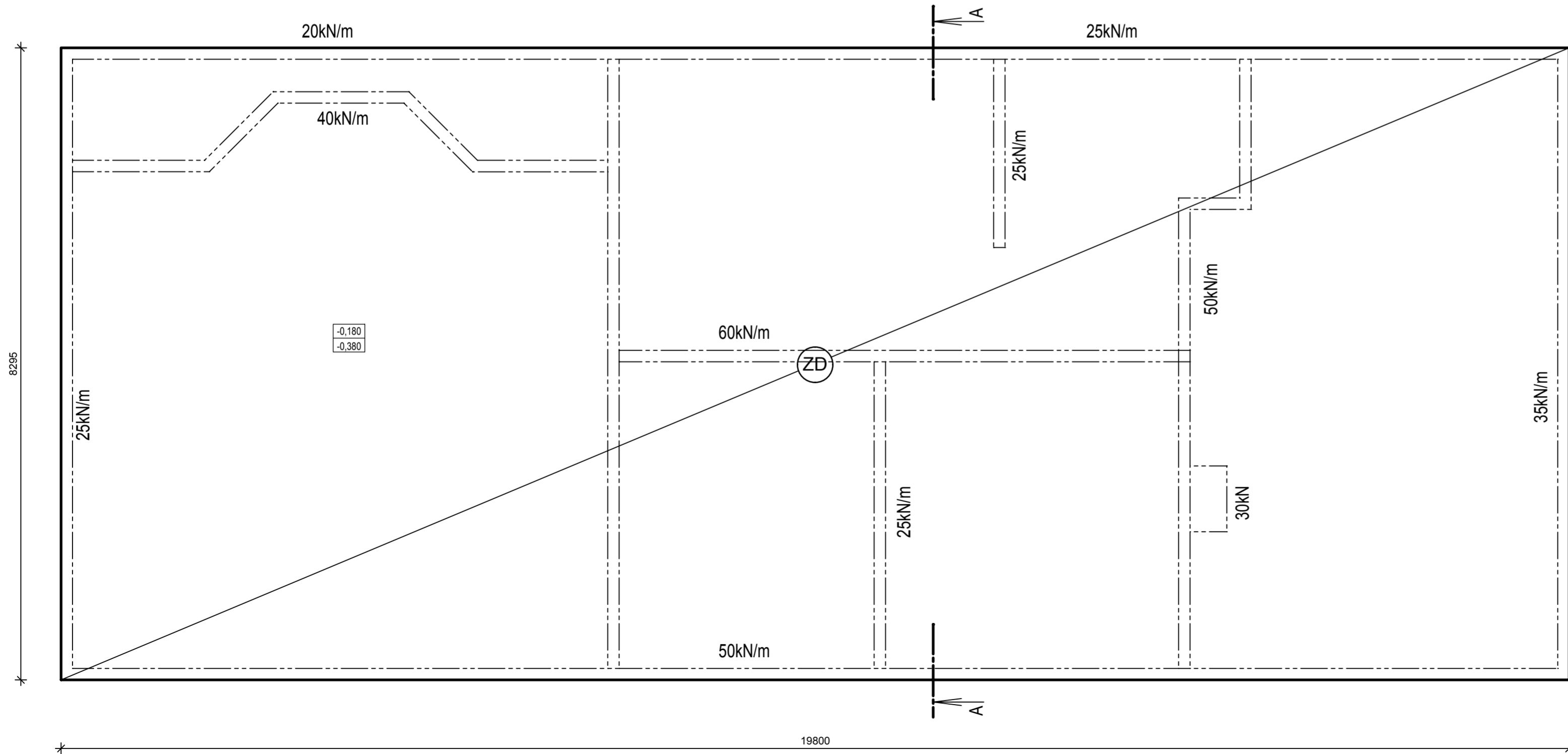
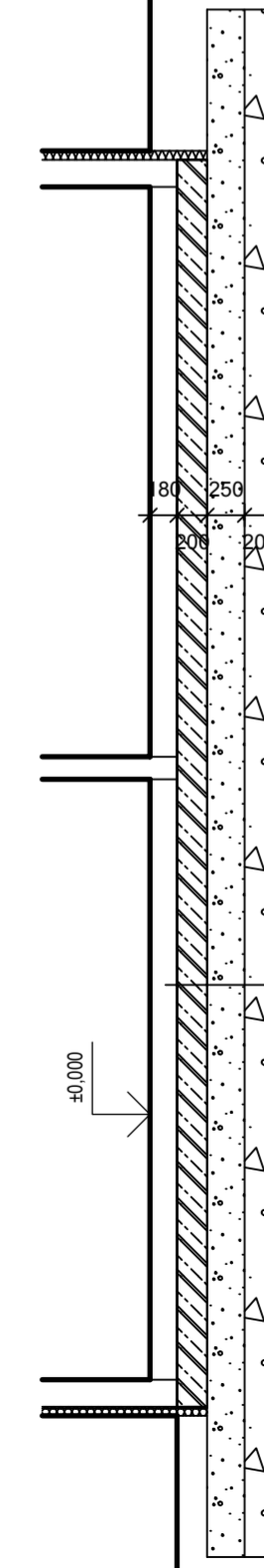


ZÁKLADY M1:50



REZ A-A



- PODLAHA tr. 180mm
- DRATKOBETONOVÁ ZÁKLADOVÁ DOSKA tr. 200mm
- PENOVÉ SKLO tr. 250mm
- ŠTRKOVÝ NASYP FR. 0.63mm, HR. 200mm, ZHUTNENÝ NA Edef = 40MPa