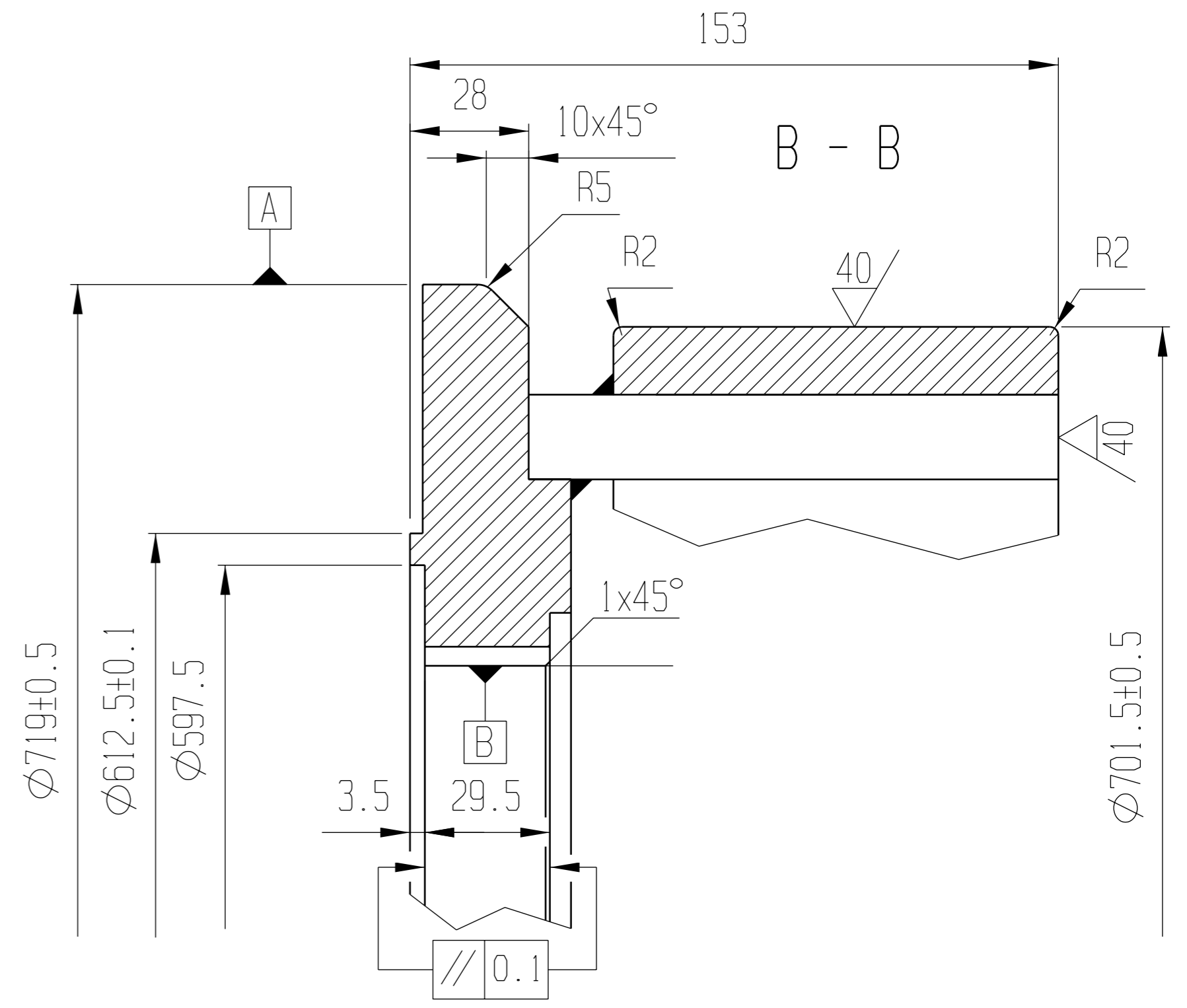
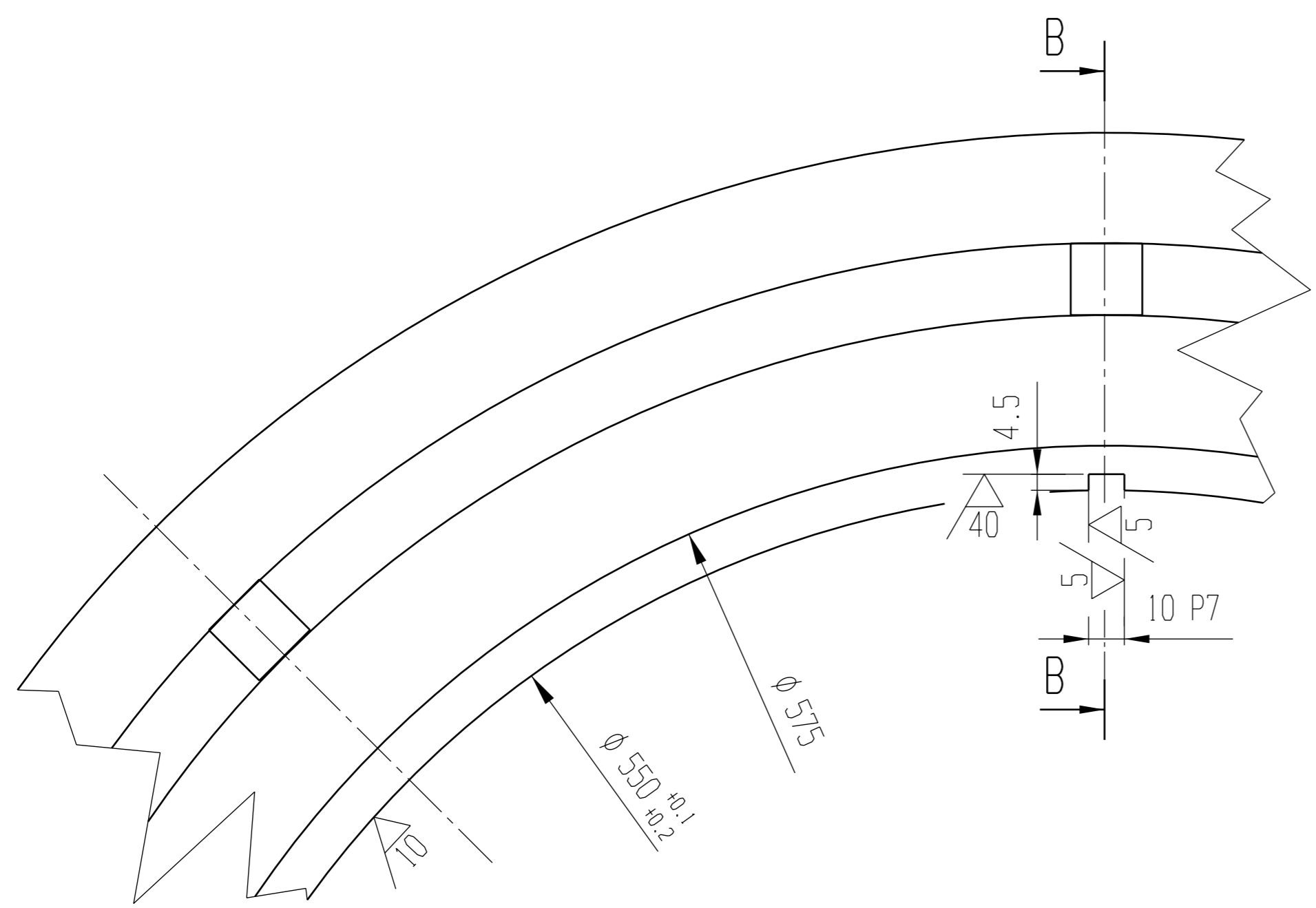


10 P7	-0.009 -0.024
Dim.	Toler.

NDE



2	1	NDE ROTOR PRESSING DISC WELDING	AWRCCN_0630601-200		55.91
Item	pcs	Name	Drgw Nr/Material code/Standard	Notice	Weight [kg]

B.O.M.

Rev.	Modification	Date	Sign	Rev.	Modification	Date	Sign



Notice  
Scale M=1:2 Weight [ kg ]  
Name  
NDE ROTOR PRESSING DISC WITH END WINDING CONSOLE

Designers	Date	Drawing number	AWRCCN_0630601-100	BOM YES <input checked="" type="checkbox"/> NO <input type="checkbox"/>	A3
Designer JUHASZ GYORGY ZOLTAN	16.11.2010.	Rev.			
Controller		Approval	PART ROBERT	16.11.2010.	Sheet 1 Page 1

ALL DIMENSIONS ARE IN MILLIMETRES