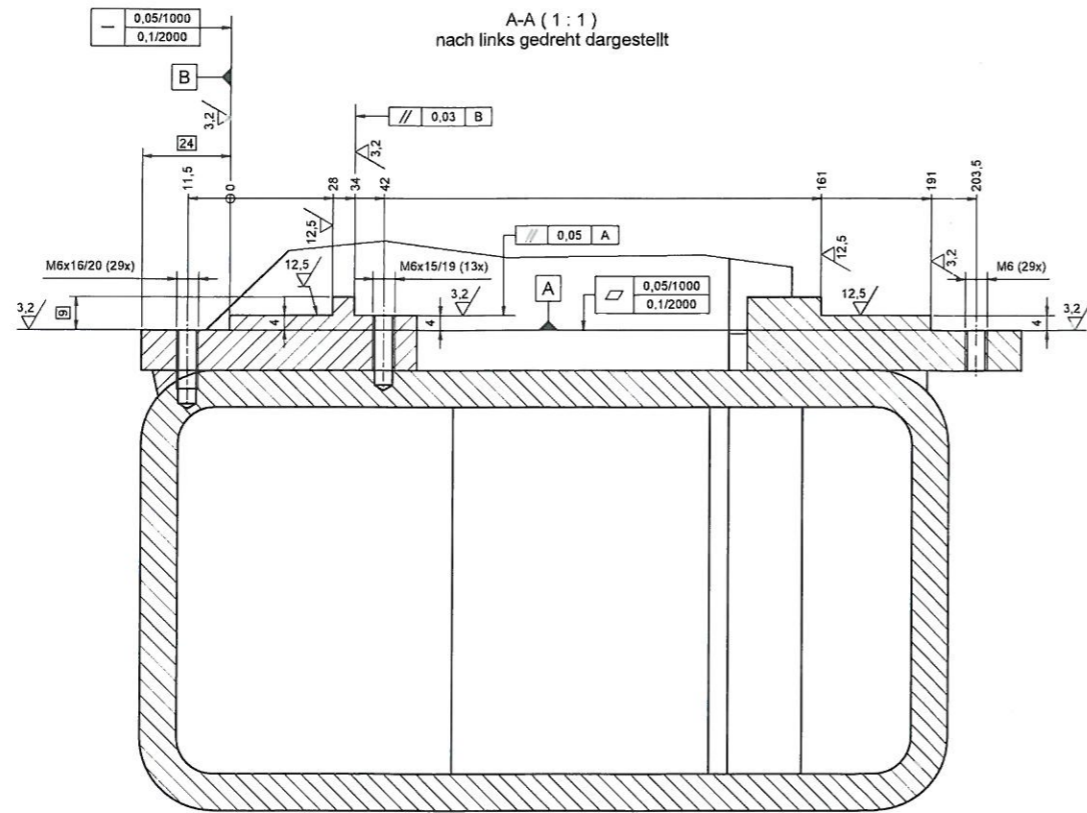
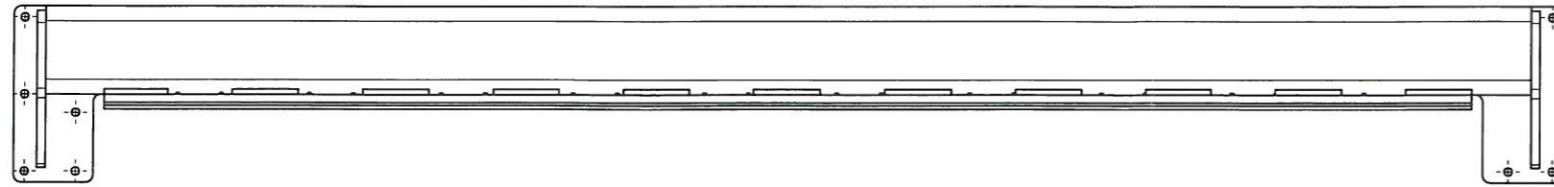
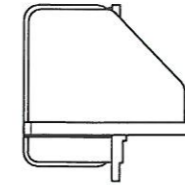
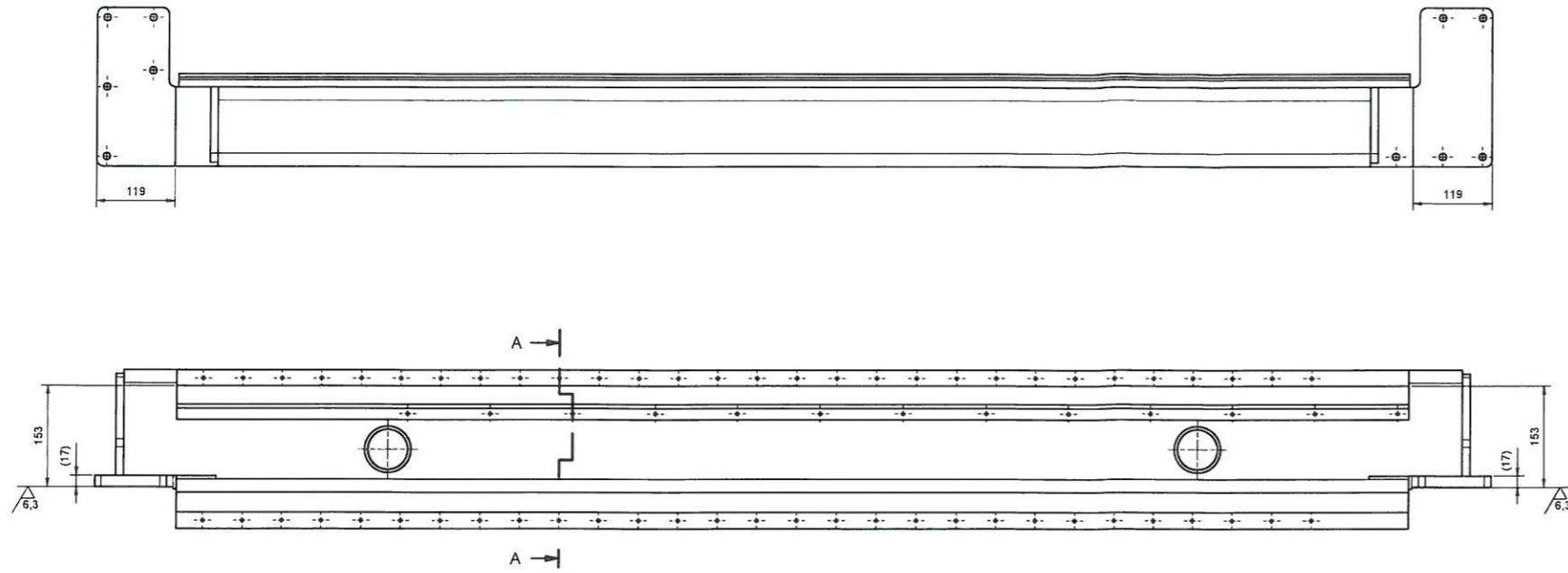


6,3 / 1,6 / -0,1 / +0,5

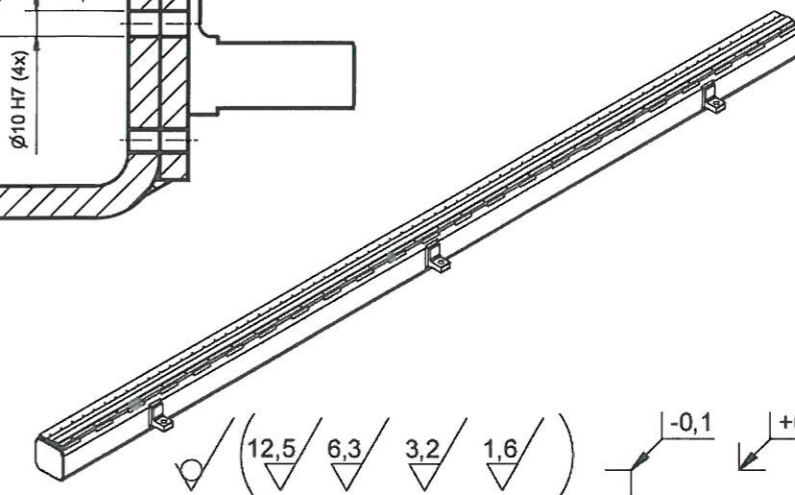
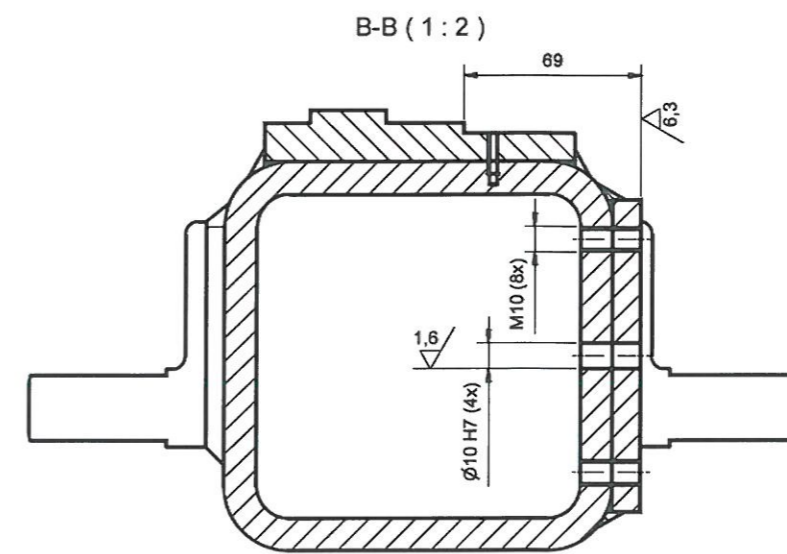
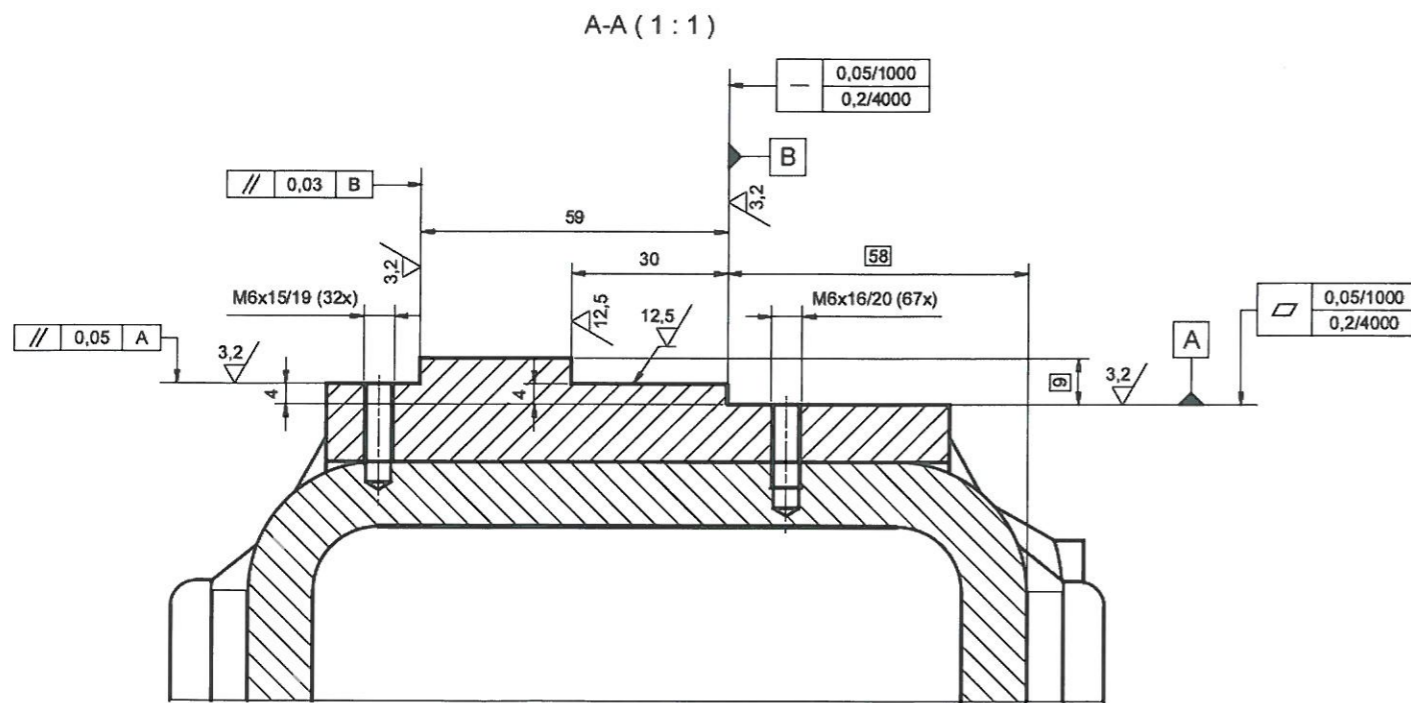
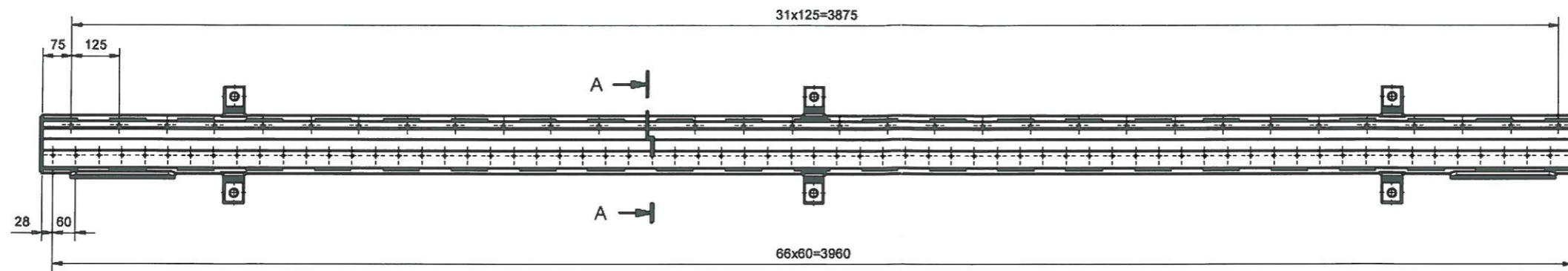
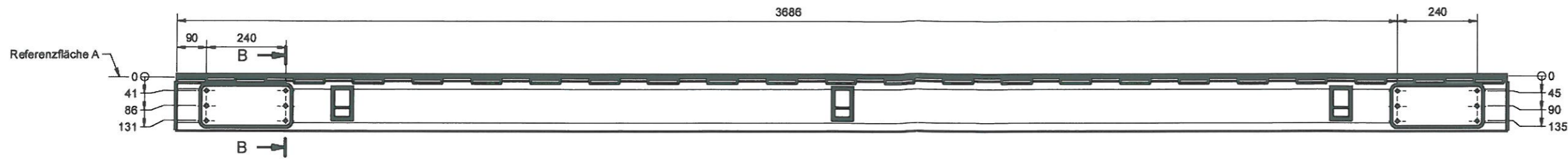
Farbgebung
RAL - 9010 (Reinweiß)
⊕ 0,3 gilt für alle Bohrungen
Schweißteilzeichnung siehe Blatt 2



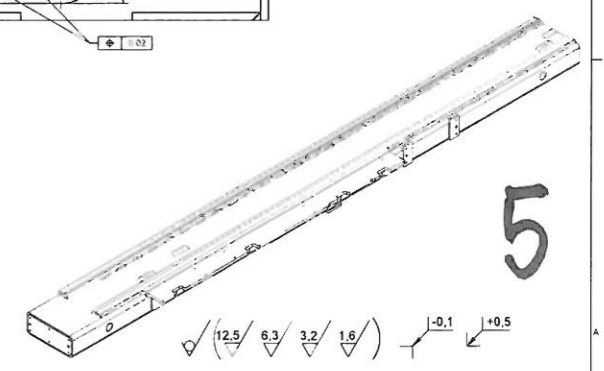
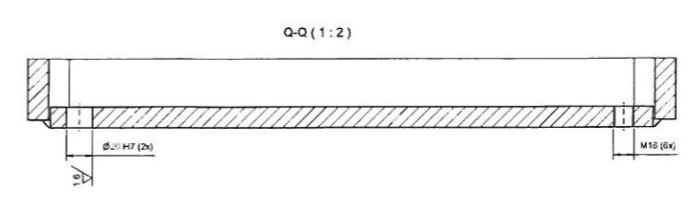
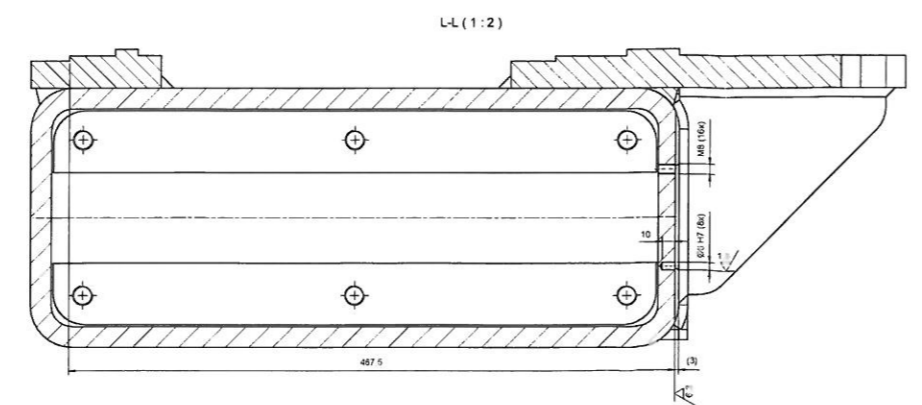
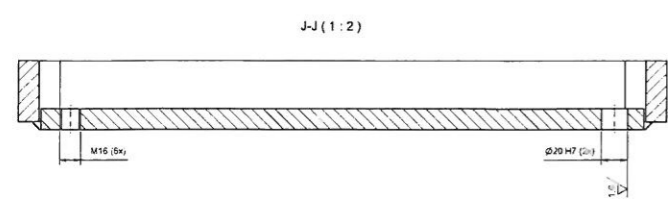
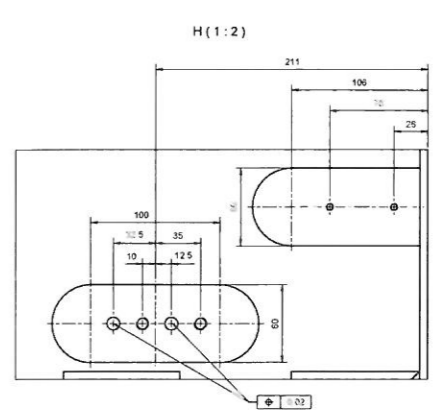
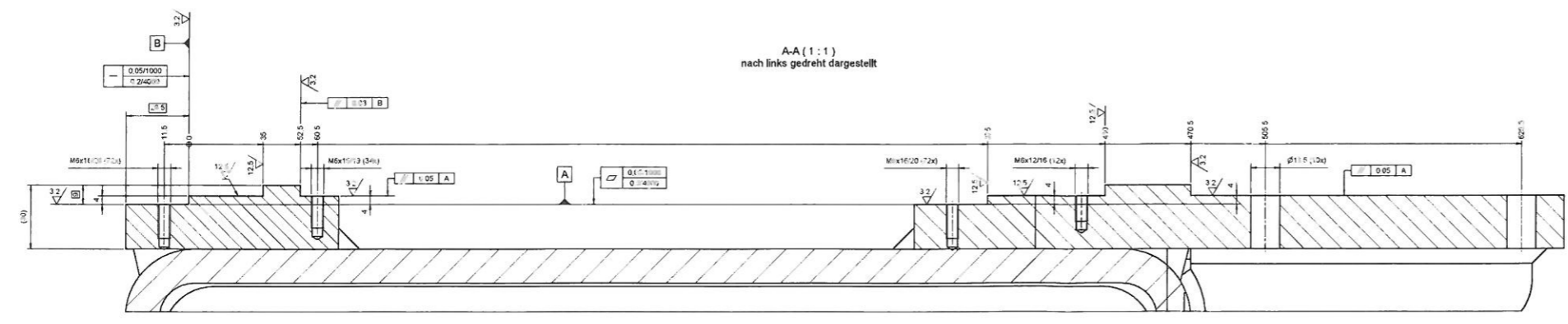
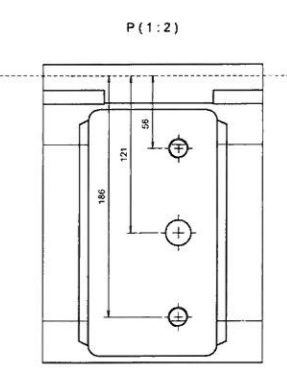
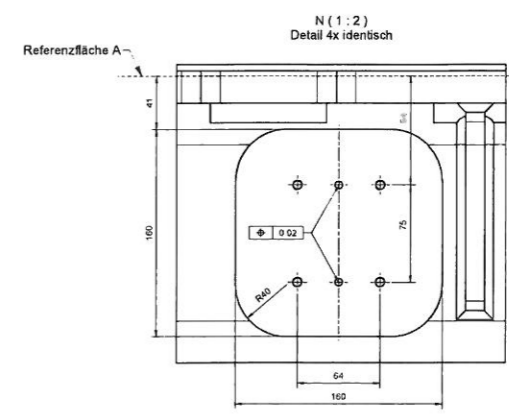
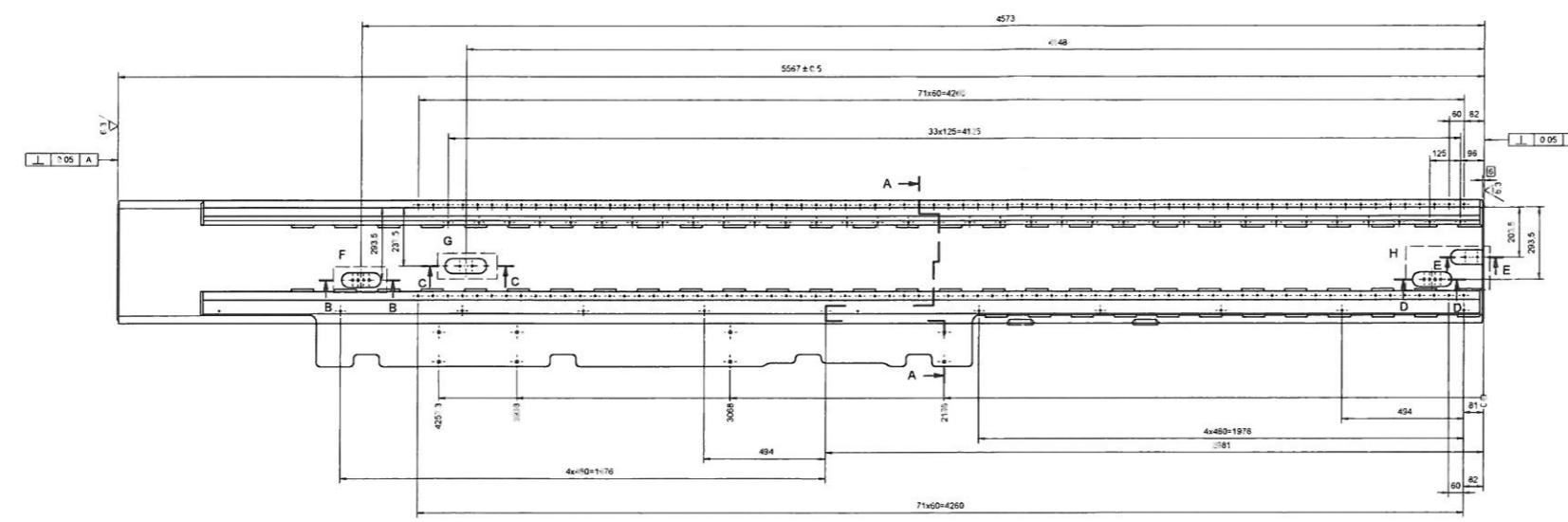
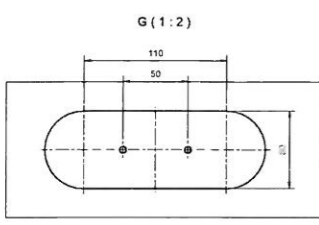
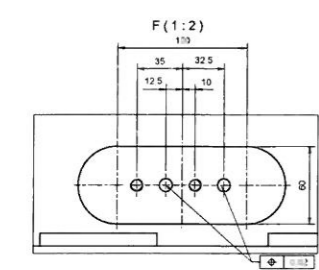
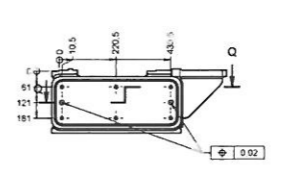
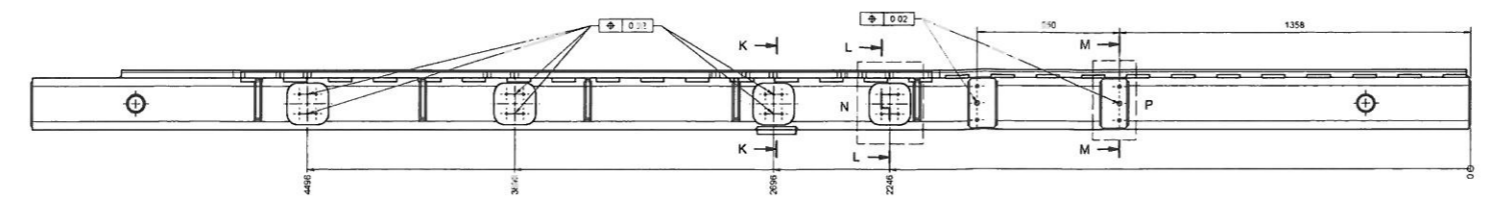
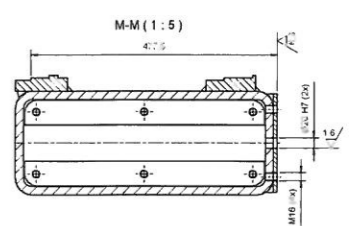
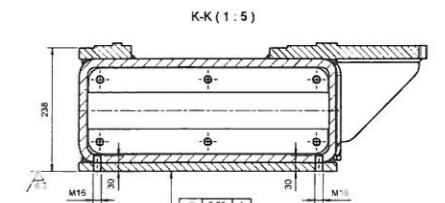
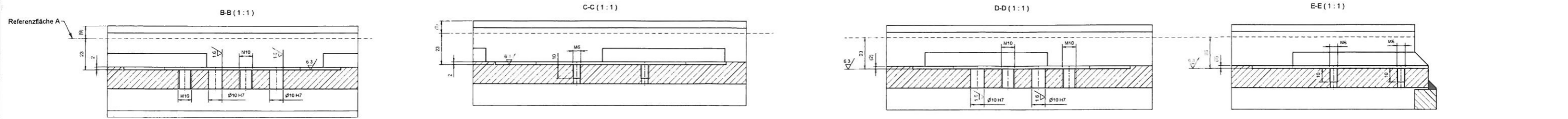
2

$\sqrt{12,5}$ $\sqrt{6,3}$ $\sqrt{3,2}$ $\sqrt{-0,1}$ $\sqrt{+0,5}$

Farbgebung
 RAL - 9010 (Reinweiß)
 $\oplus 0,2$ gilt für alle Bohrungen
 Schweißteilzeichnung siehe Blatt 2



Farbegebung RAL - 9010 (Reinweiß)
$\oplus 0,3$ gilt für alle Bohrungen
Schweißteilzeichnung siehe Blatt 2



bearbeitete Flächen und Gewinde beim Lackieren abdecken
Farbgebung RAL - 9010 (Reinweiß)
⊕ 0,2 gilt für alle Bohrungen
Schweißzeichnung siehe Blatt 2