

General tolerances DIN6930-m

Steel stampings 9-32316E

General tolerances ISO 2768

Forming	
>120	≤120
m	c
v	c

Separating

Linear dimension

Broken edges

Angular dimension

9-32312E

m

c

v

L

m

c

c

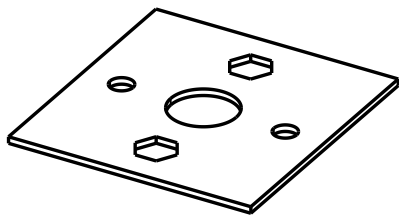
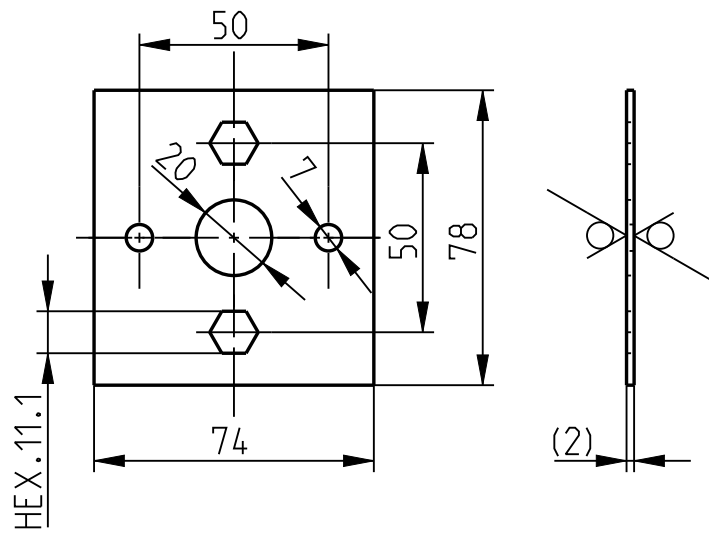
K

Form and position

9-32313E

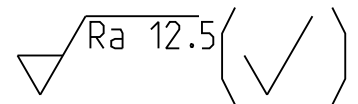
L

K



Notes:

- All sharp edges removed



A

B

C

D