

1

2

3

4

General tolerances DIN6930-m

Steel stampings 9-32316E

General tolerances ISO 2768

Forming
>120 | ≤120Sepa-
rating

Linear dimension

Broken edges

Angular dimension

9-32312E

m

c

c

c

m

v

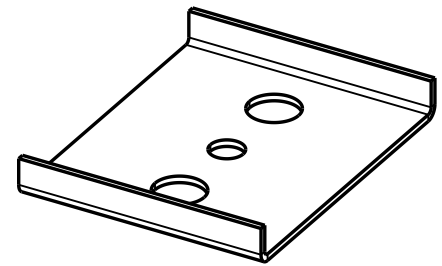
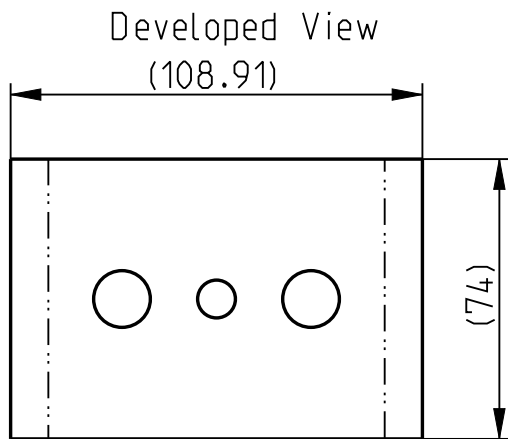
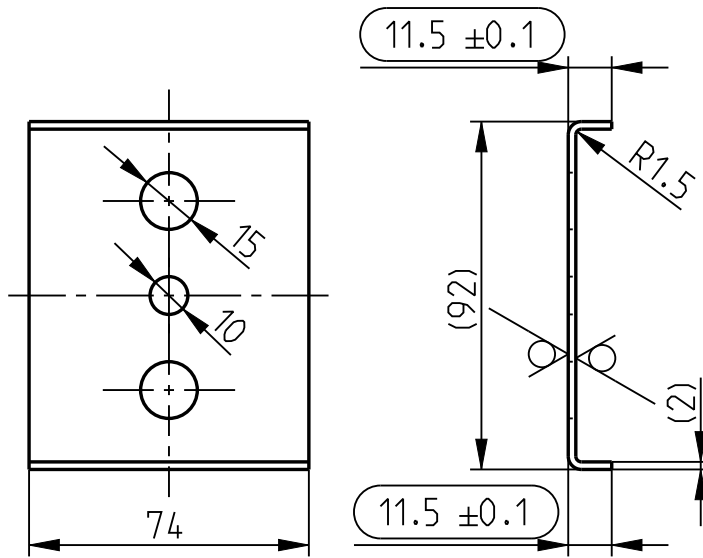
c

Form and position

9-32313E

L

K



Notes:

- Parts drawn according not specific bending process
- All sharp edges removed