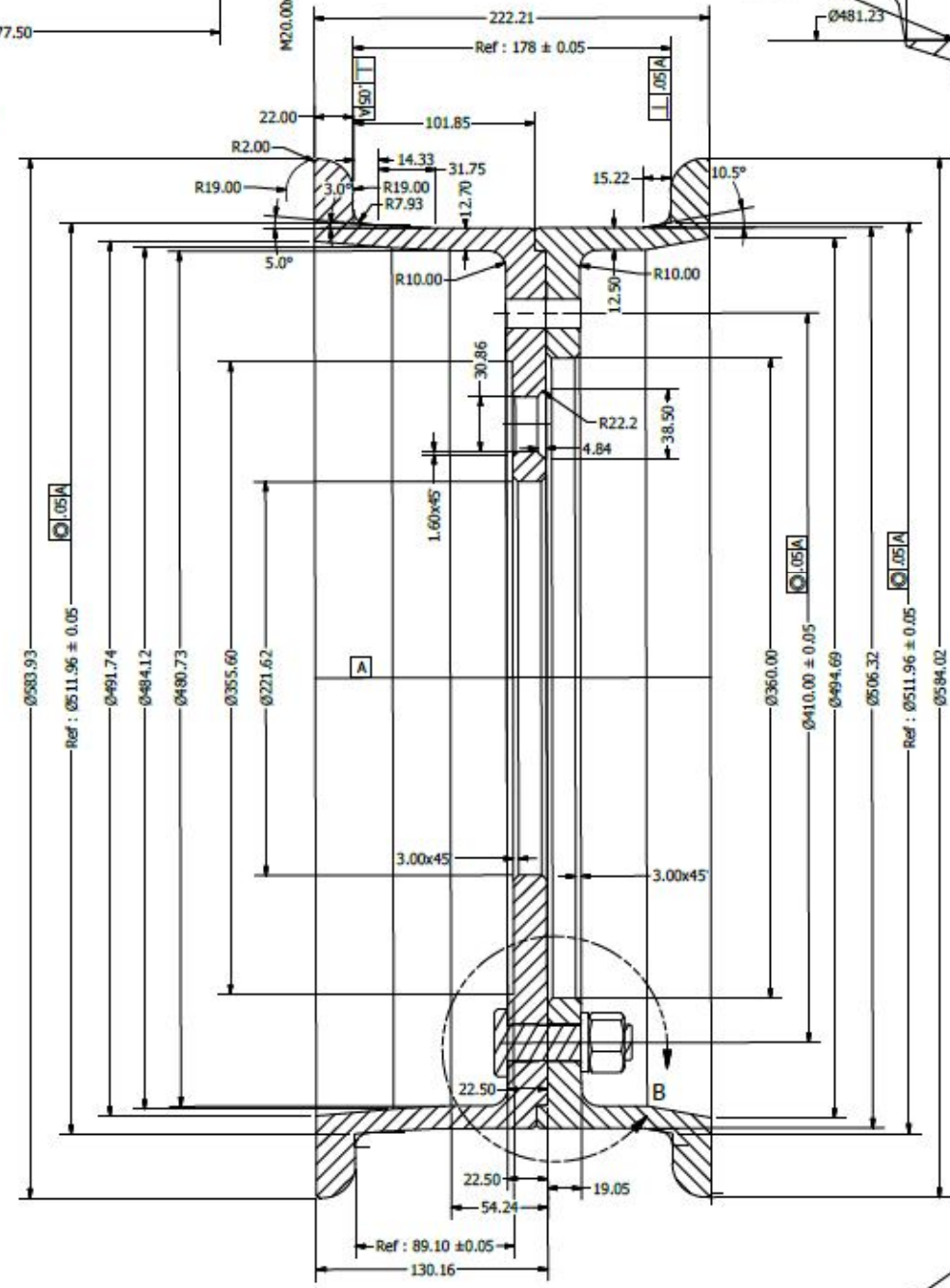
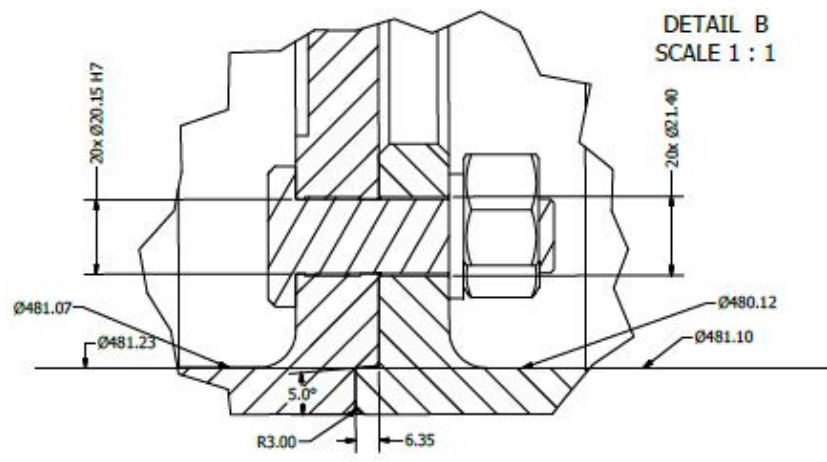


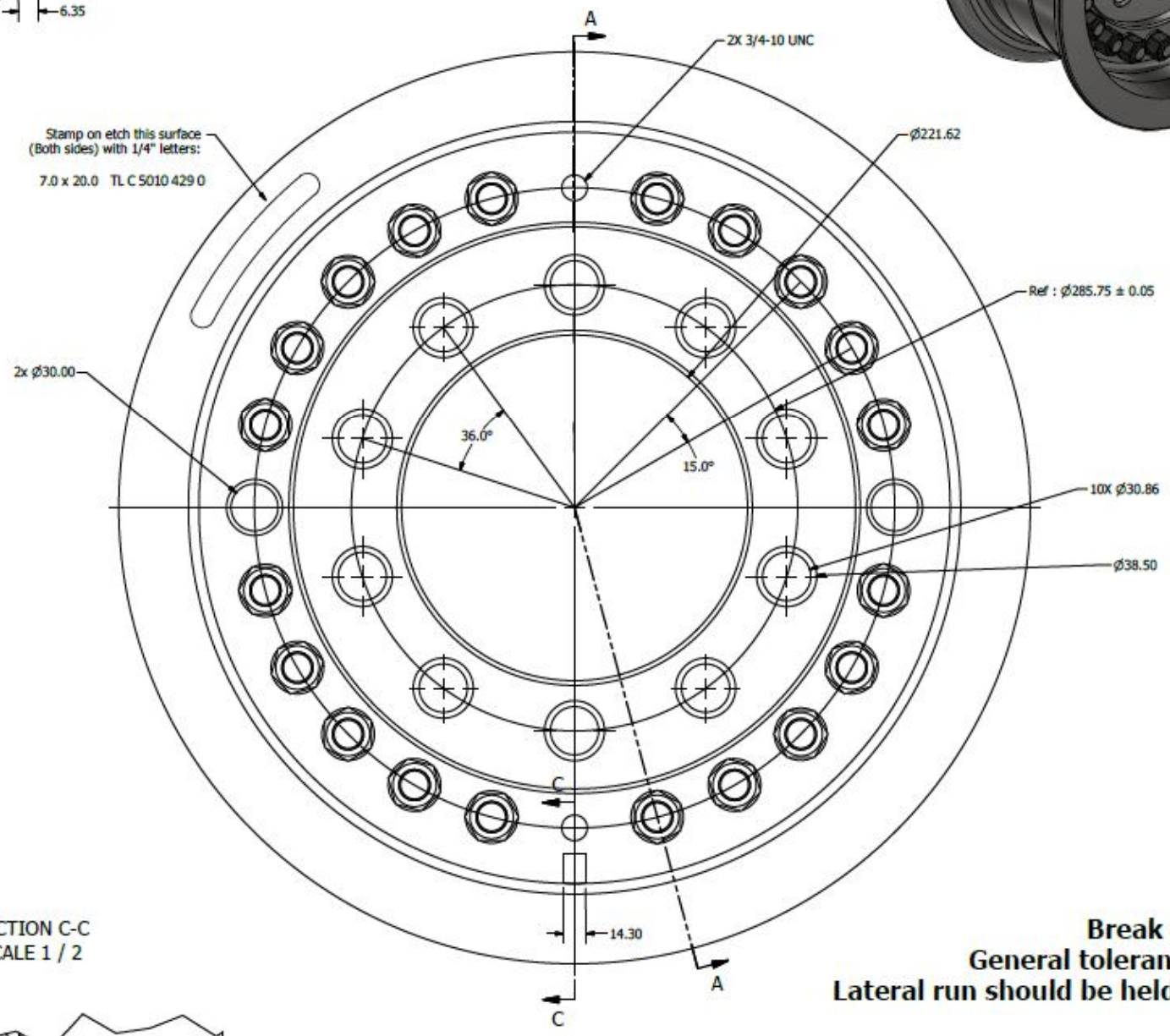
W515 stud  
Use disc wheel Nut - M20-1.5  
Euclid #E-10235 - 20 Required



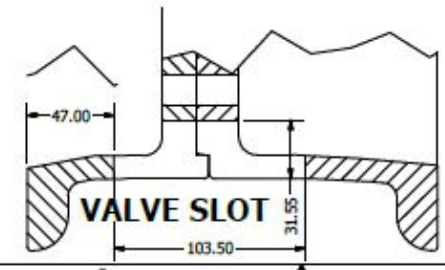
SECTION A-A  
SCALE 1 / 2



DETAIL B  
SCALE 1 : 1



SECTION C-C  
SCALE 1 / 2



VALVE SLOT

Mat : ST 52-3  
Break all sharp corners  
General tolerance ISO 2768-mH  
Lateral run should be held to 0.13mm Max

