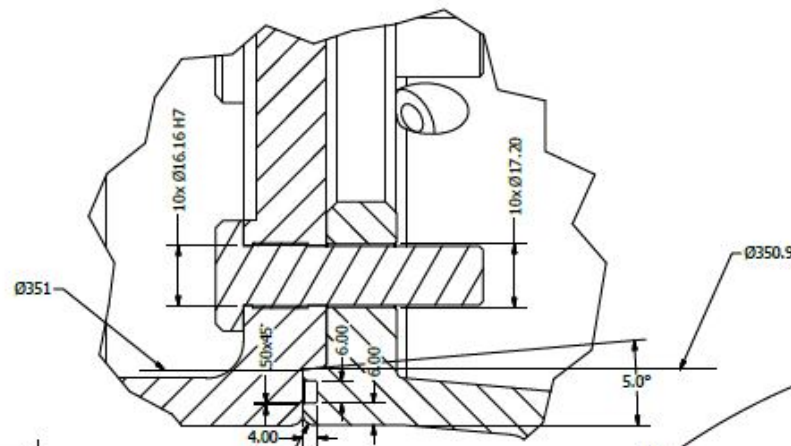
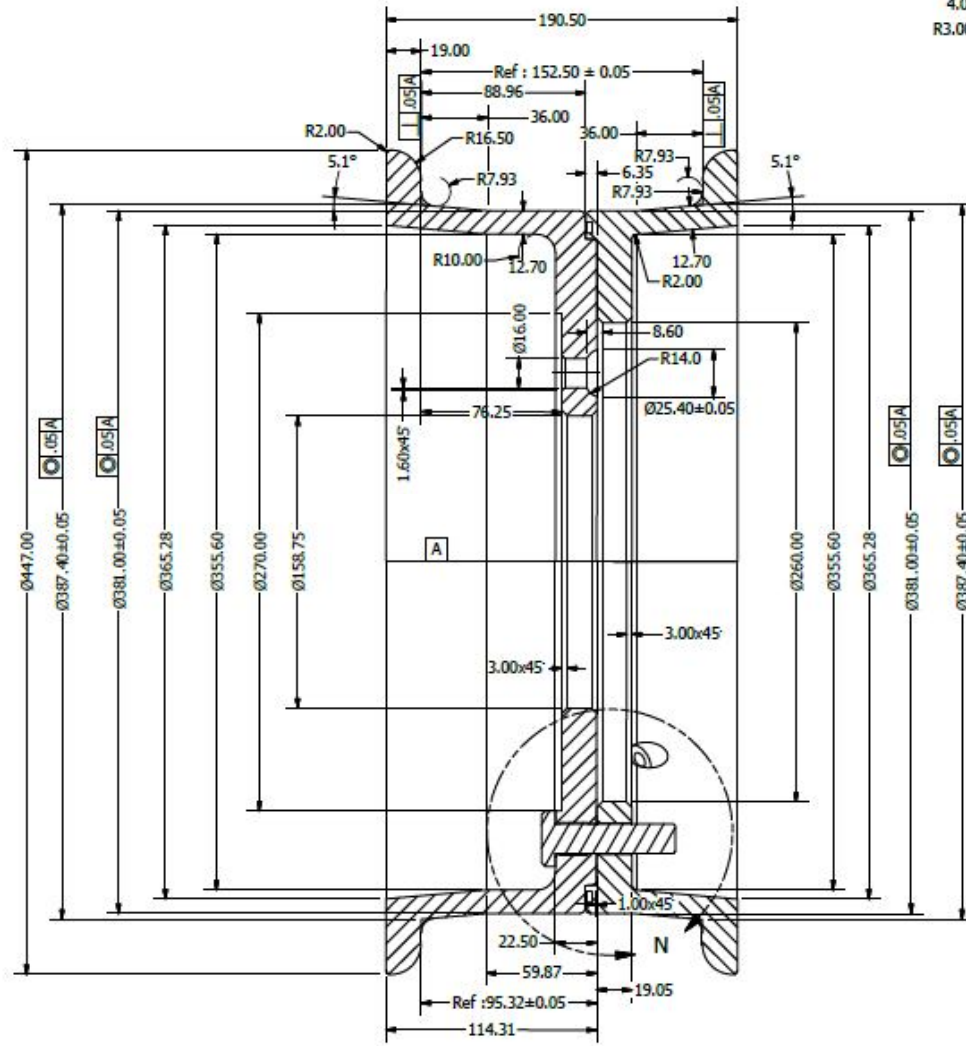


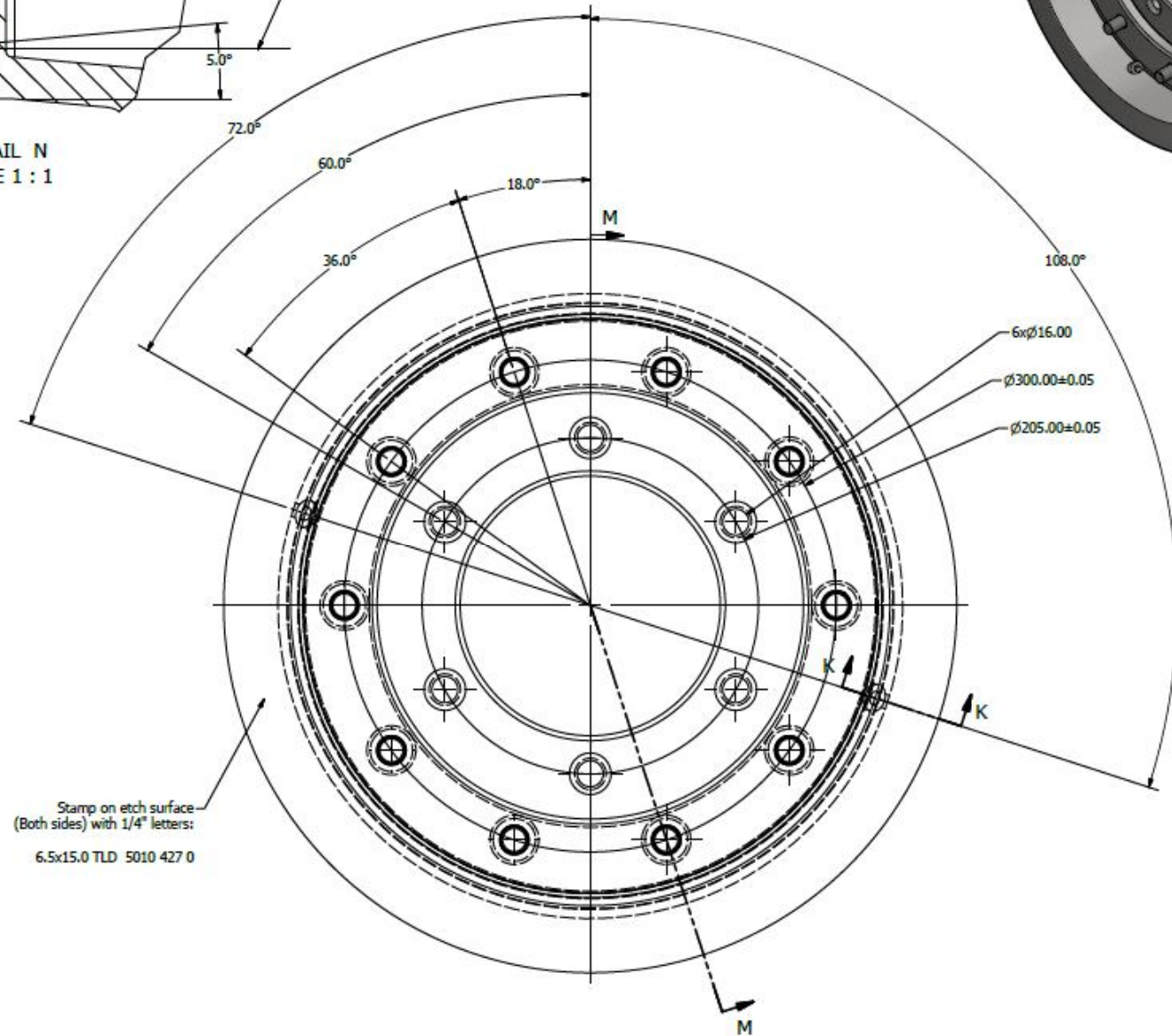
WS15 Stud
Use disc wheel Nut - M16-1.5
Euclid #E-10235 - 10 Required



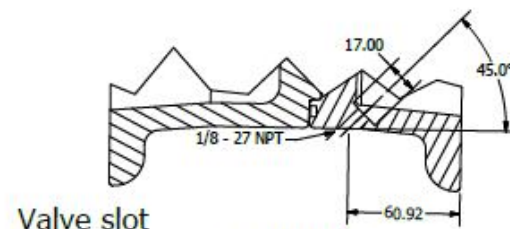
DETAIL N
SCALE 1 : 1



SECTION M-M
SCALE 1 / 2



Stamp on etch surface
(Both sides) with 1/4" letters:
6.5x15.0 TLD 5010 427 0



Valve slot

SECTION K-K
SCALE 1 / 2

Mat: ST 52-3
Break all sharp corners
General tolerance ISO 2768-mH
Lateral run out should be held to 0.13mm MAX,

