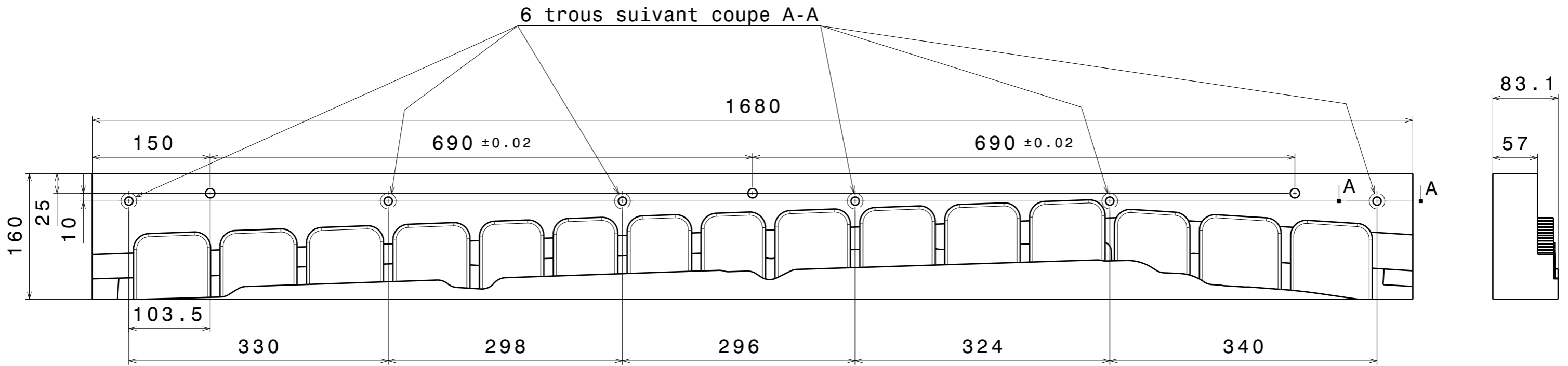
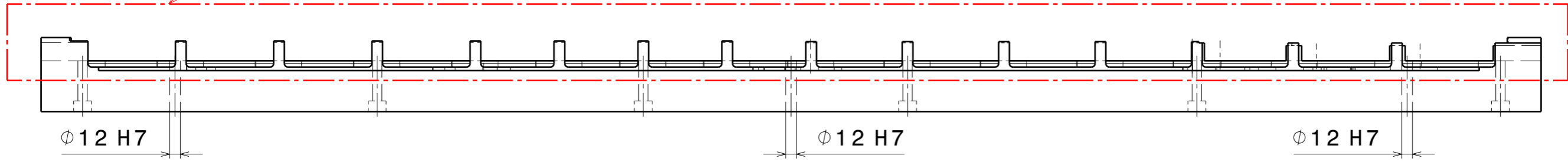
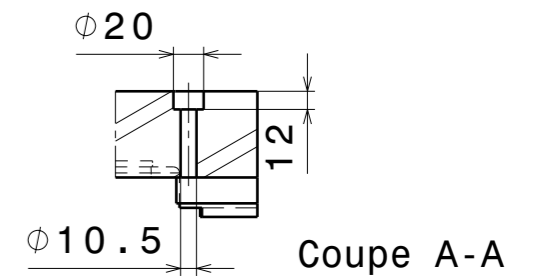
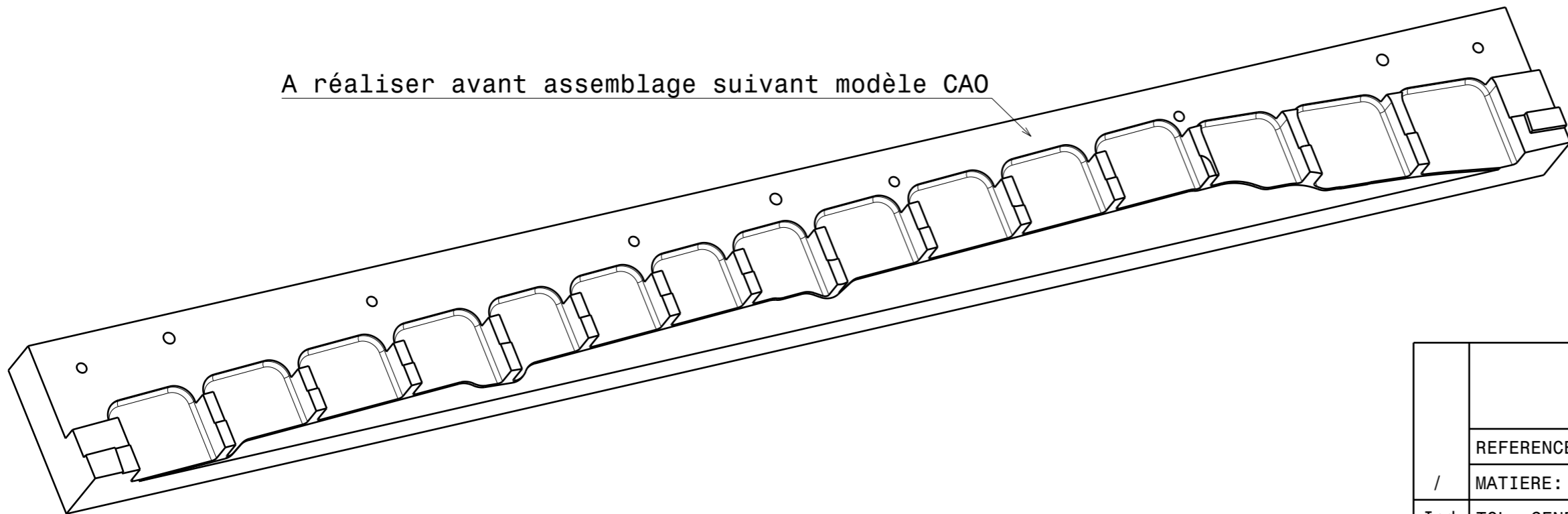


Usinage des peignes à réaliser suivant CAO après assemblage



A réaliser avant assemblage suivant modèle CAO



	DESIGNATION: SEMELLE	
	REFERENCE: 81601Z01 G05345218103/104	PLANCHE: 1
/	MATIERE: ALU	DESSINATEUR: PA
Ind	TOL. GENERALE: ±0.2	QUANTITE: 1P+ 1S