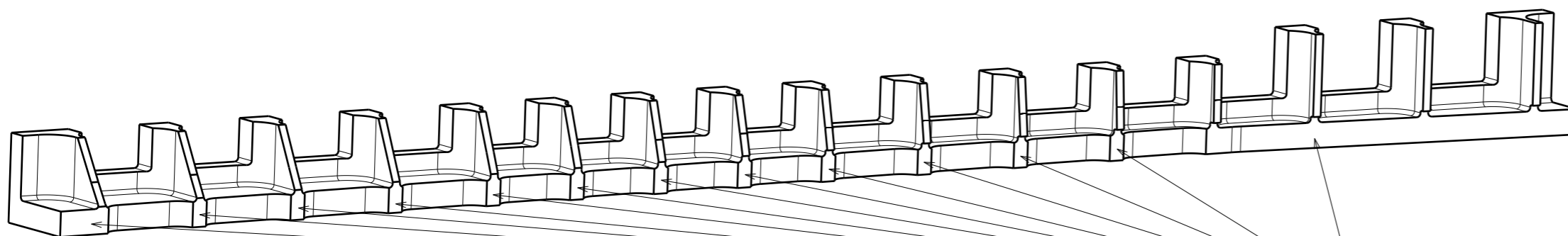
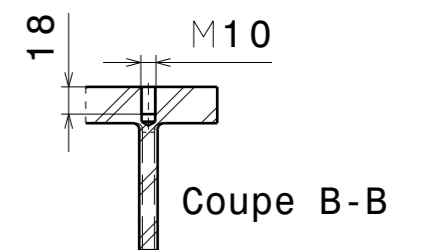
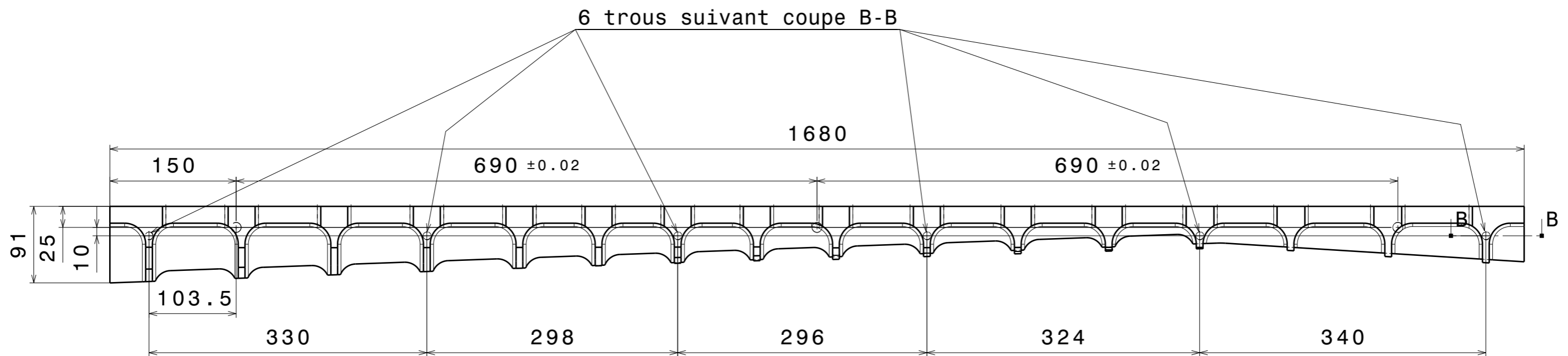
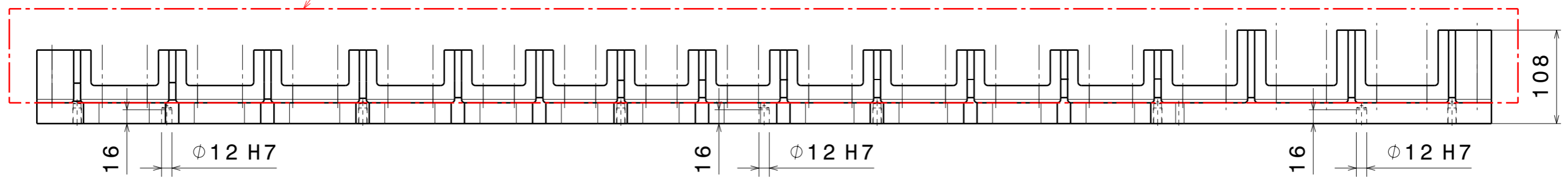


Usinage des peignes à réaliser suivant CAO après assemblage



Usinage contour inférieur à réaliser avant assemblage

		DESIGNATION: BLOC PEIGNE
	REFERENCE: 81601Z01 G05345218103/104	PLANCHE: 1
/	MATIERE: ALU	DESSINATEUR: PA
Ind	TOL. GENERALE: ±0.2	QUANTITE: 1P+ 1S