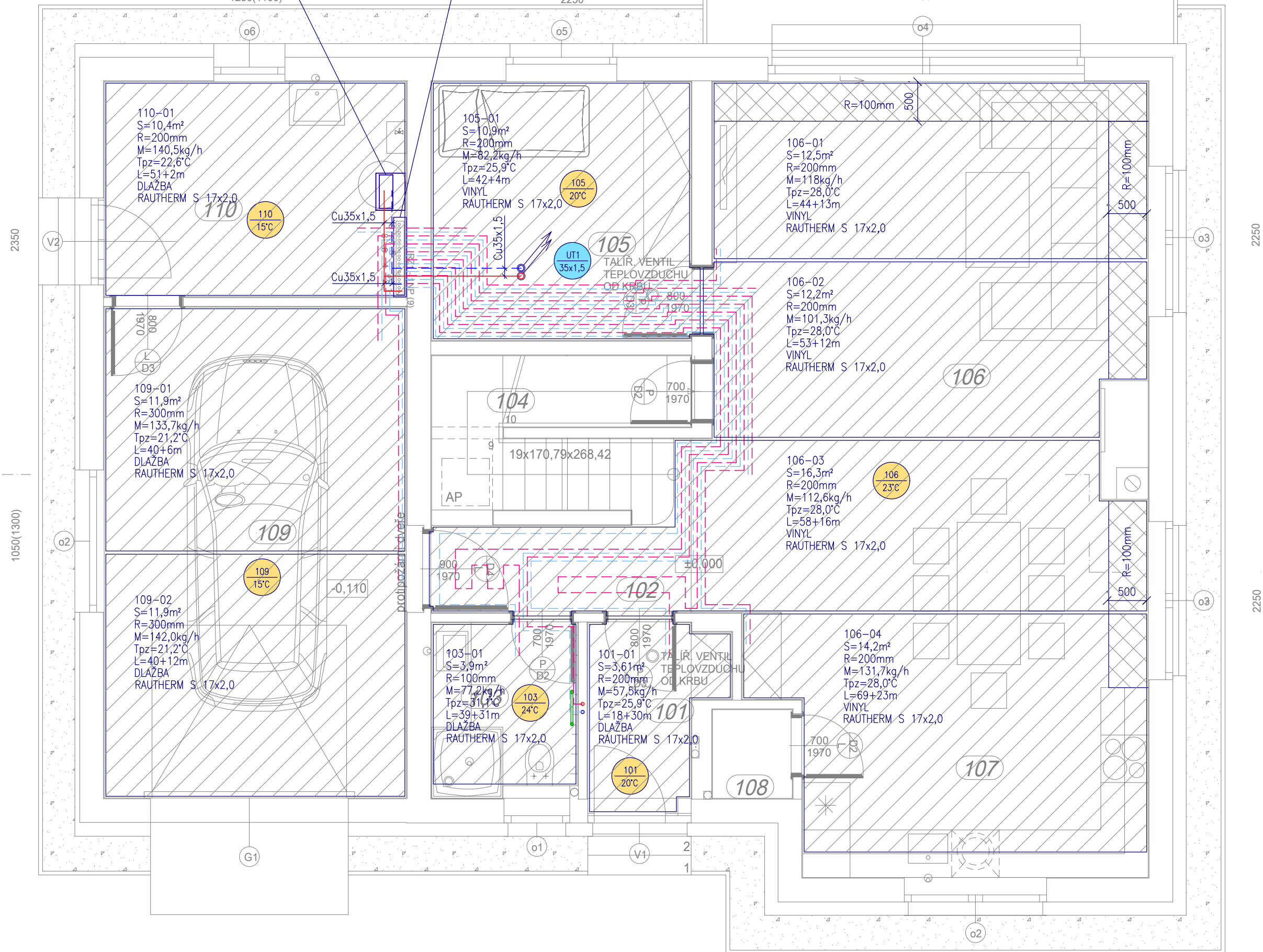


ELEKTROKOTEL TEPLOVODNÍ
 BOSCH TRONIC HEAT 3500 9kW
 m=1,95m³/h, H=3,0m
 VČETNĚ: EXPANZNÍ NÁDOBA 7l
 POJISTNÝ VENTIL 3bar
 MODUL EKVITERMNÍ REGULACE
 3xKK32, 1xFILTR 32 1250(1100)

R+S HKV-D 11 SMYČEK
 VČETNĚ 2xKK25
 SKŘÍŇ NAD OMÍTKU AP 1005
 2250



110-01
 S=10,4m²
 R=200mm
 M=140,5kg/h
 Tpz=22,6°C
 L=5,1+2m
 DLAŽBA
 RAUTHERM S 17x2,0

105-01
 S=10,9m²
 R=200mm
 M=82,2kg/h
 Tpz=25,9°C
 L=42+4m
 VINYL
 RAUTHERM S 17x2,0

106-01
 S=12,5m²
 R=200mm
 M=118kg/h
 Tpz=28,0°C
 L=44+13m
 VINYL
 RAUTHERM S 17x2,0

109-01
 S=11,9m²
 R=300mm
 M=133,7kg/h
 Tpz=21,2°C
 L=40+6m
 DLAŽBA
 RAUTHERM S 17x2,0

106-02
 S=12,2m²
 R=200mm
 M=101,3kg/h
 Tpz=28,0°C
 L=5,3+12m
 VINYL
 RAUTHERM S 17x2,0

109-02
 S=11,9m²
 R=300mm
 M=142,0kg/h
 Tpz=21,2°C
 L=40+12m
 DLAŽBA
 RAUTHERM S 17x2,0

106-03
 S=16,3m²
 R=200mm
 M=112,6kg/h
 Tpz=28,0°C
 L=58+16m
 VINYL
 RAUTHERM S 17x2,0

103-01
 S=3,9m²
 R=100mm
 M=77,2kg/h
 Tpz=24°C
 L=39+31m
 DLAŽBA
 RAUTHERM S 17x2,0

101-01
 S=3,61m²
 R=200mm
 M=57,5kg/h
 Tpz=25,9°C
 L=18+30m
 DLAŽBA
 RAUTHERM S 17x2,0

106-04
 S=14,2m²
 R=200mm
 M=131,7kg/h
 Tpz=28,0°C
 L=69+23m
 VINYL
 RAUTHERM S 17x2,0

2350

1050(1300)

2250

2250