

**inpro**<sup>®</sup>

• **IPC**<sup>®</sup>

Door + Wall Protection Systems

Uniclass L4423			
Cl/SfB			
(42)	X	(J4)	

**inpro**<sup>®</sup>

INTERIOR AND EXTERIOR  
ARCHITECTURAL PRODUCTS

Inpro<sup>®</sup> European Headquarters, Inpro<sup>®</sup> Europe S.R.L.  
Loc. Ponte Giulio, 05018 Orvieto - TR, Italy  
UK sales office: +44(0)7399 586677  
[www.inprocorp.com](http://www.inprocorp.com)  
©2017 Inpro<sup>®</sup> Corporation



# Obsessively protecting your buildings and the people who use them.<sup>™</sup>

Your building says a lot about you. What it looks like, the quality of construction, how well it functions – is a direct reflection of you. So why waste your time designing, constructing and maintaining a building that will only look good today? In 10 years, or even 2 years, will your building look as new as the day it opened? Will your building continue to be a positive reflection of you?

Protecting your bespoke designs, your buildings, your spaces, is how we began. And protecting your reputation, through our obsessive service, is the reason we're still here. In 1979 we began our obsessive commitment to protect buildings and the people who use them, and we haven't stopped. Since then, we've expanded the protection products we manufacture and opened global offices to bring protection to every space, in every building, everywhere.

Your building will stand for you as much now as it will in the years to come. Make sure it stays looking like you intended on the day it opened by protecting it.

## The Inpro<sup>®</sup> advantage



### Global experience

Inpro<sup>®</sup> has been supplying products throughout the world for over 35 years. We have the expertise to make sure your project conforms to local codes and standards.



### Superior service

With our extreme focus on customer service you can rest assured that your project will run smoothly.



### Variety of options

Between our colour palettes and product models, we have exactly what you're looking for in your building.

## Contents

### PVC-u

- 4 The Benefits of PVC-u
- 5 Sustainable Materials

### Handrails

- 6 Introduction
- 7 Anatomy of Handrails
- 8 800, 900SSR, 910, 920
- 9 940, 1000, 2000, 3110
- 10 3130, 3510, 3530, 3400
- 11 The Christie Centre

### Wall Guards

- 12 Introduction
- 13 Anatomy of Wall Guards
- Extruded Rubrail, 2500 Chair Rail
- 14 Infinity Bracket, 700, 1400, 1500
- 15 1600, 1800, 1300, 50SS Stainless Steel Wall Guard
- 16 High Impact Wall Base, NuTree<sup>®</sup> Wall Guard
- 17 The Tower Hotel

### Corner Guards

- 18 Introduction
- 19 Corner Guard No Tape
- 20 Aluminium Corner Guard, Clear Polycarbonate, NuTree<sup>®</sup> Corner Guard
- 21 130, 150, 160
- 22 130F, 150F, 160F
- 23 Queen Elizabeth Hospital

### Wall Protection

- 24 Introduction
- 25 Sanparrel<sup>™</sup> Sheet, Trim Options
- 26 Stainless Steel Wall Panels, NuTree<sup>®</sup> Diamond Plate Sheet
- 27 Tools and Accessories

### Door Protection

- 28 Introduction
- 29 Custom Door Frame Guard, 1700 Door Frame Guard, Door Edge Protectors
- 30 Door Face Protection, PVC-u, SS, 10, 20, 30

### Reference

- 31 Colours
  - Standard Solid
  - Woodland
  - Elements
- 32 Oakfield High School
- 33 Product Characteristics
- 34 Product Part Index



# The Benefits of PVC-U

## Safe, durable and recyclable.

At Inpro®, we are committed to finding breakthrough materials for Door + Wall Protection products to help protect your buildings and the people who use them.

Our PVC-u material gives you the durability you need to protect your building, your design and your budget.

Available in a wide array of colours and patterns, your building's unique personality will be fortified against the wear and tear of everyday building abuse.



# Sustainable Materials

## It may be elemental, but it's far from simple.

Despite the numerous certifications and accreditations available, specifiers have no way of knowing what materials comprise their Door + Wall Protection products, or - most importantly - how those materials will impact people and the environment.

### Our PVC-u Materials:

- ✓ Extremely durable, cost effective and environmentally responsible
- ✓ No Phthalates
- ✓ No Halogenated Fire Retardants
- ✓ No BPA (bisphenol-a)
- ✓ GREENGUARD™ Indoor Air Quality Children and Schools Certified
- ✓ May Qualify for LEED™ and Green Globes™ Credit
- ✓ Recyclable
- ✓ Fungal and Bacterial Resistant (ASTM G21 & G22 Testing)
- ✓ Lowest Fossil Fuel Consumption of Polymers in manufacturing
- ✓ Superior Impact Resistance (ASTM F-476 testing)



# Handrails

Safeguard people from slips, falls and more.

Protect your interior walls from damage, and safeguard the people who rely on your buildings from slips, falls and even odor-causing bacteria with our variety of handrails. Whether you're looking for maximum wall protection or code compliance, we have a handrail option for you.

Many of our handrails are designed to meet guidelines BS8300:2009 + A1:2010.

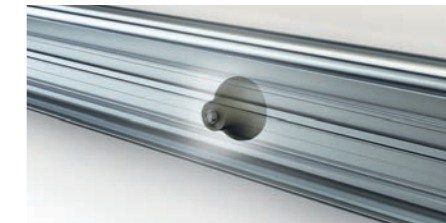


## Anatomy of handrails



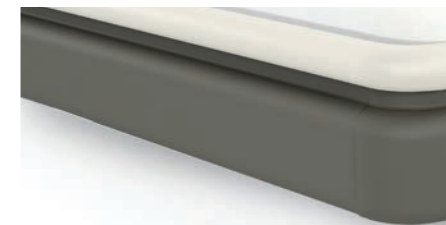
Aluminium retainer

Aluminium retainer and splice provides structural stability and allows extended lengths over 3.66m.



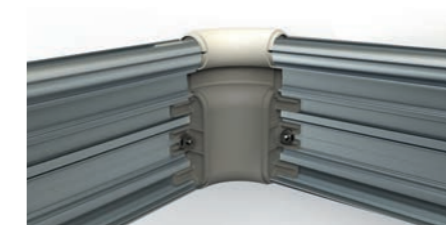
Mounting bracket

Mounting bracket keeps hands a safe distance from the wall.



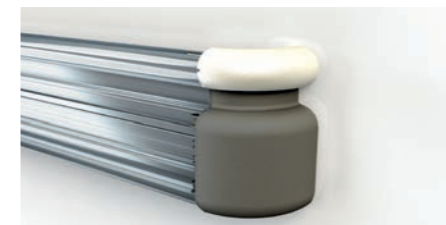
Cover

Covers are available in a variety of colours to coordinate with other interior finishes.



Inside/outside corners

Inside/outside corners provide a smooth transition for corner applications.



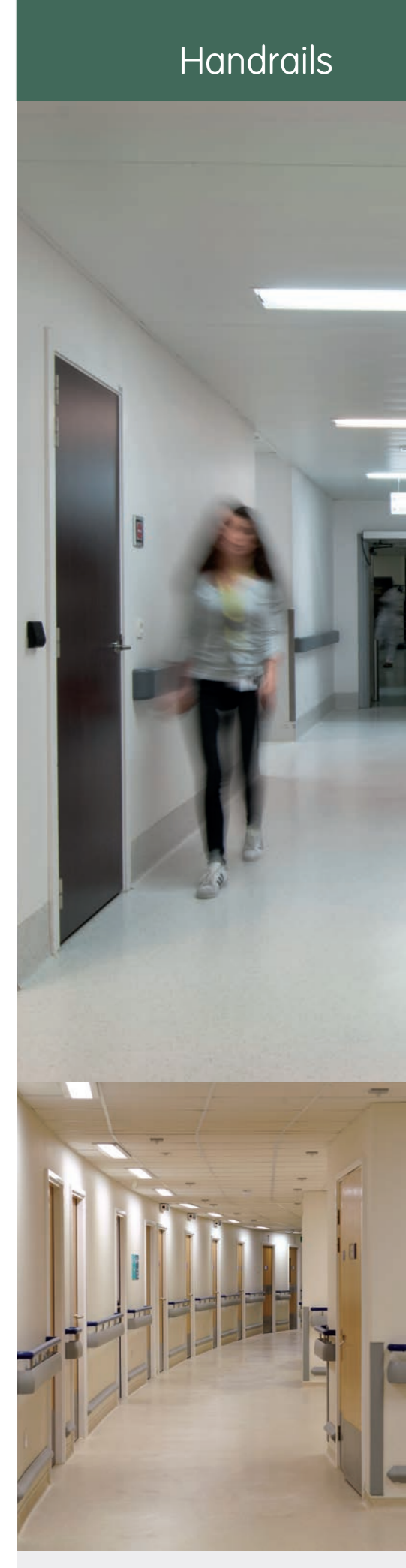
Returns

Returns finish gives the handrail installation a professional look.



Add a reveal

Add a reveal as a decorative element, standard with every Woodland Handrail order.



### 800 Handrail



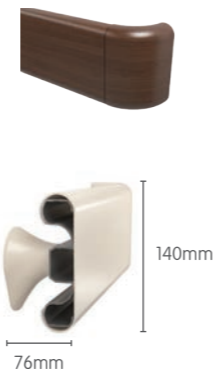
**Materials**

- PVC-u

**Colours**

- Standard solid colours
- Woodlands

- Ligature-resistant bracket and 50mm standoffs available upon request.



### 940 Handrail



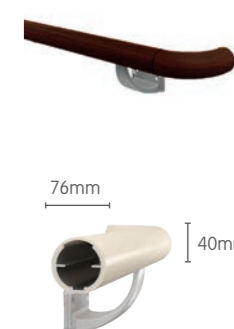
**Materials**

- PVC-u

**Colours**

- Standard solid colours
- Woodlands

- 50mm standoffs standard.
- HTM 00-04 compliant bracket available.



### 900SSR Round Handrail



**Materials**

- Type 304 Stainless Steel

**Colours**

- #4 Brushed Finish

- 50mm standoffs available upon request.



### 1000 Handrail



**Materials**

- PVC-u

**Colours**

- Standard solid colours
- Woodlands

- Ligature-resistant bracket and 50mm standoffs available upon request.



### 910 Handrail



**Materials**

- PVC-u

**Colours**

- Standard solid colours
- Woodlands
- Elements

- 50mm standoffs available upon request.



### 2000 Handrail



**Materials**

- PVC-u

**Colours**

- Standard solid colours
- Woodlands

- 50mm standoffs available upon request.



### 920 Handrail



**Materials**

- PVC-u

**Colours**

- Standard solid colours
- Woodlands
- Elements

- 50mm standoffs available upon request.



### 3110 Round Handrail



**Materials**

- PVC-u

**Colours**

- Standard solid colours
- Woodlands

- Ligature-resistant bracket and 50mm standoffs available upon request.



### 3130 Oval Handrail



**Materials**

- PVC-u

**Colours**

- Standard solid colours
- Woodlands

- Ligature-resistant bracket and 50mm standoffs available upon request.



### 3510 Handrail



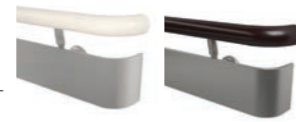
**Materials**

- V-Vinyl

**Options**

- FV - Woodlands
- S - Stainless Steel
- M - Metal Tone

- 50mm standoffs available upon request.



### 3530 Handrail



**Materials**

- V-Vinyl

**Options**

- FV - Woodlands
- S - Stainless Steel
- M - Metal Tone

- 50mm standoffs available upon request.



### 3400 Handrail



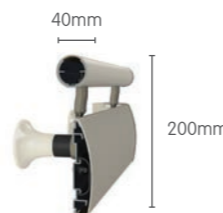
**Materials**

- PVC-u

**Colours**

- Standard solid colours
- Woodlands

- 50mm standoffs available upon request.
- HTM 00-04 bracket available.



## The Christie Manchester, UK

IPC® Door + Wall Protection products were installed during the construction of the new £35 million Patient Treatment Centre at The Christie in Manchester. These products help to create a hygienic, safe and stylish establishment for patients, staff and visitors.

The following products were installed throughout the corridors and treatment areas of the facility:

- 700i Wall Guards
- Standard Corner Guards

IPC® Door + Wall Protection Systems prevent the build-up of dirt and odor causing bacteria in damaged surfaces. This reduces the need for ongoing maintenance and repair, saving both time and money which allows for long-term improvement and advancement of the facility.



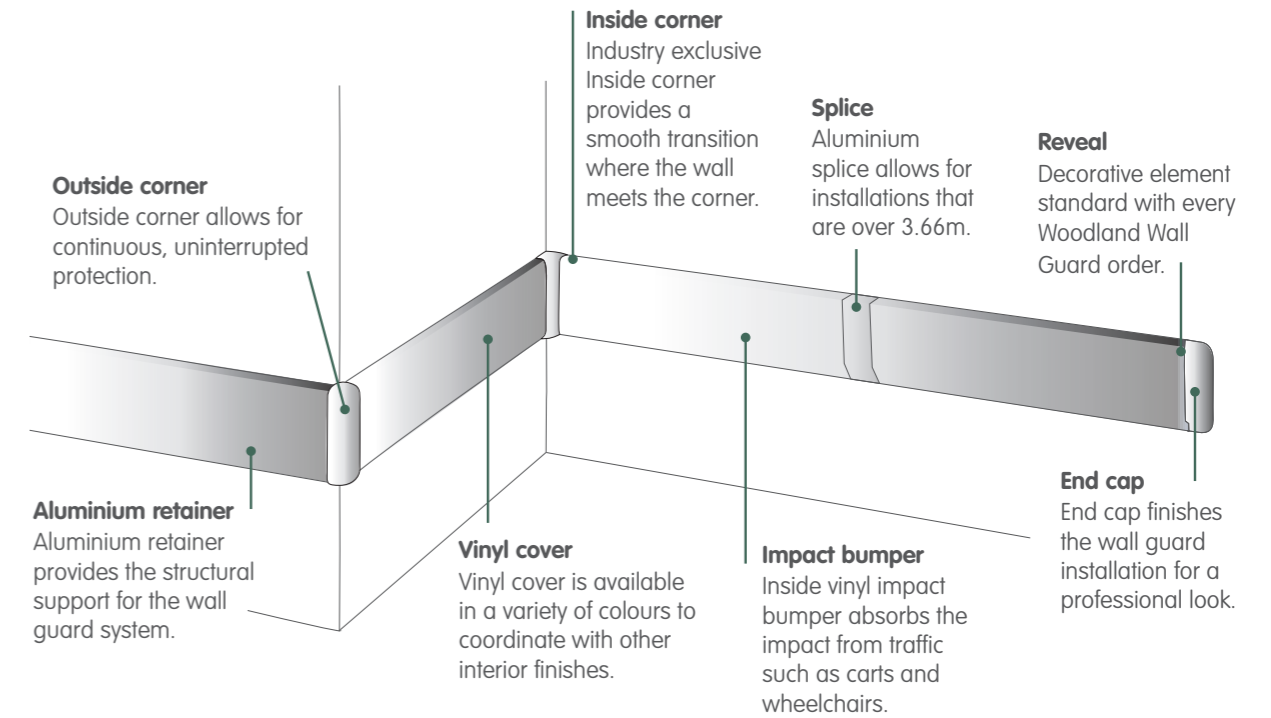
# Wall Guards

## Prevent scratches and dents.

Guard your walls from scratches, dents and scrapes by installing one of our Wall Guards. There's no need to let wheelchairs, hospital beds and service carts leave you with constant maintenance. Our Wall Guards add a decorative element while providing a continuous and highly durable impact bumper that keeps your walls free from damage.



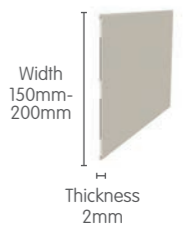
## Anatomy of wall guards



## Extruded Rubrail



- Materials**
- PVC-u with and without tape
- Colours**
- Standard solid colours
  - RR150 and RR200 Extruded Rubrail offer the same protection levels as Sanparrel™ Sheet.



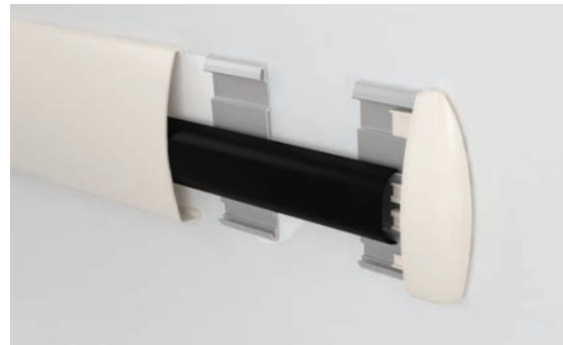
## 2500 Chair Rail



- Materials**
- PVC-u
- Colours**
- Standard solid colours
  - Woodlands



### Infinity Bracket



The Infinity Bracket is a shortened Aluminium retainer that reduces the cost of having a full retainer. It's also easier to install in short runs.

**Features and benefits**

- Reduces cost
- Easy to install
- Reduces material waste

● Available on the 700, 1400, 1500, 1600, 1800 wall guards.

### 700 Wall Guard



**Materials**

- PVC-u

**Colours**

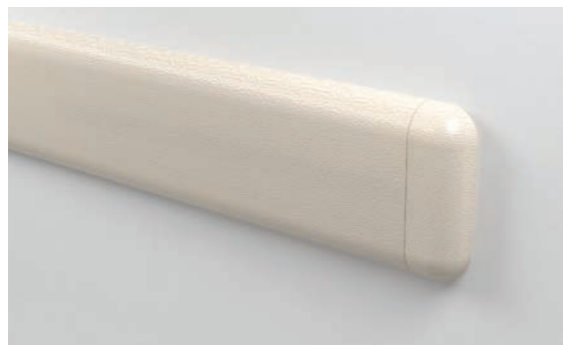
- Standard solid colours
- Woodlands

**Retainer Choices**

- Continuous Bracket
- Infinity Bracket



### 1400 Wall Guard



**Materials**

- PVC-u

**Colours**

- Standard solid colours
- Woodlands

**Retainer Choices**

- Continuous Bracket
- Infinity Bracket



### 1500 Silhouette Wall Guard



**Materials**

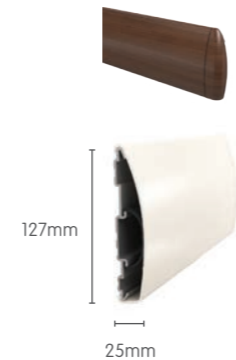
- PVC-u

**Colours**

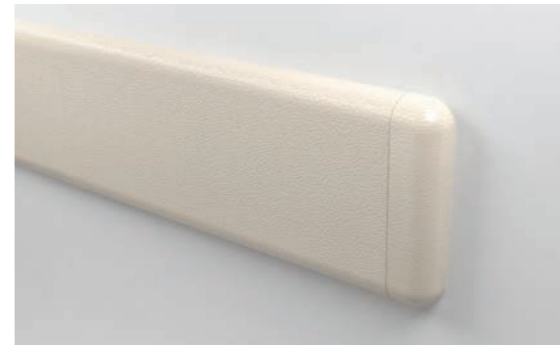
- Standard solid colours
- Woodlands

**Retainer Choices**

- Continuous Bracket
- Infinity Bracket



### 1600 Wall Guard



**Materials**

- PVC-u

**Colours**

- Standard solid colours

**Retainer Choices**

- Continuous Bracket
- Infinity Bracket



### 1800 Wall Guard



**Materials**

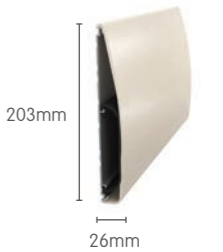
- PVC-u

**Colours**

- Standard solid colours

**Retainer Choices**

- Continuous Bracket
- Infinity Bracket



### 1300 Wall Guard

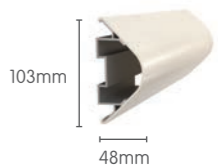


**Materials**

- PVC-u

**Colours**

- Standard solid colours



### 50SS Stainless Steel Wall Guard

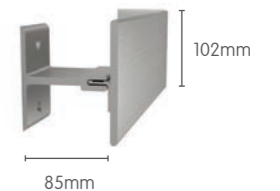


**Materials**

- Stainless Steel Type 304

♻️ Contains up to 75% post-consumer recycled material.

● Widths ranging up to 152mm available, visit [inprocorp.com](http://inprocorp.com) for more information.



Factory pre-cut sections to field measurements non-returnable.



## High Impact Wall Base



### Materials

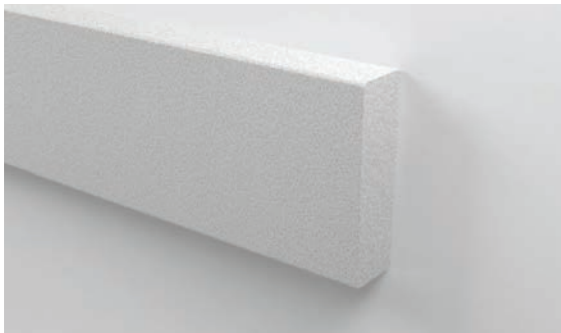
- PVC-u

### Colours

- Standard solid colours



## NuTree® Wall Guard



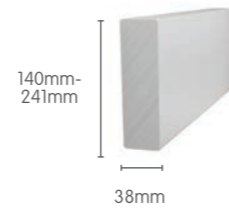
NuTree® is a high-impact, heavy-duty solution for those areas in your building that take the toughest abuse.

NuTree® products are great for back of house or maintenance areas that suffer the endless damage caused by carts, heavy equipment and more.

Custom sizes and colours available with minimums. Multiple heights and thicknesses available. Please reference Part Number Index for more information.

### Colours

Black 11	Weather Wood 05
Dove Gray 13	Sandstone 04



## The Tower Hotel London, UK

During the renovation to prepare for the 2012 Olympic Games, The Tower Hotel utilised IPC® corner guards throughout the building to create a clean and inviting space for guests.

The renovation included an update to all 800 guestrooms and dining areas throughout the hotel.

IPC® Standard PVC-u corner guards were used for the hotel's busy corridors. The corner guards helped to defend the newly created design from the everyday abuse caused by luggage carts, suitcases and cleaning carts.

The Tower Hotel was able to maintain their high-end design throughout the hotel by selecting corner guards in coordinating colours.



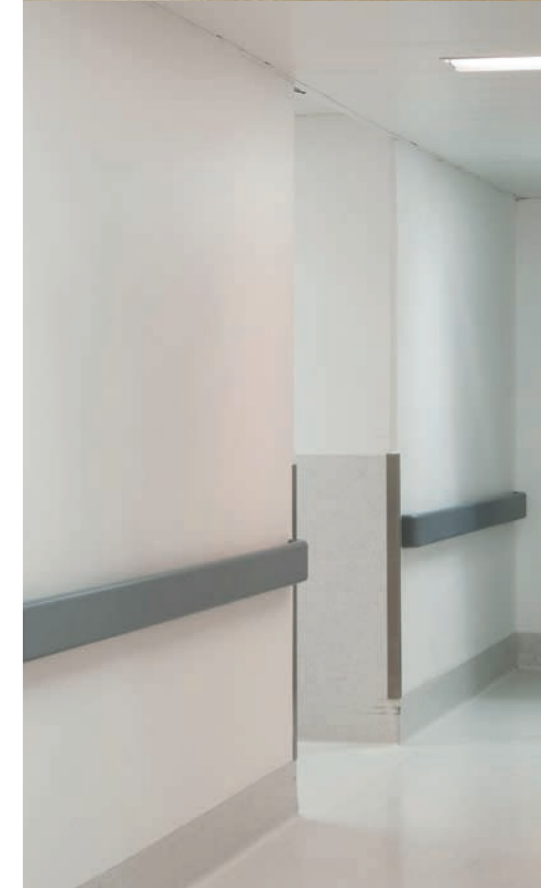
# Corner Guards

Protect the most vulnerable parts of your walls from damage.

Corners are susceptible to endless damage. Protect them and keep your facility looking newer longer with Corner Guards from IPC®. Whether you need a quick fix or an integrated, fire rated solution, we have the right corner guard for you.



## Corner Guards



### Corner Guard, No Tape



#### Materials

- PVC-u

#### Colours

- Standard solid colours

#### Angles

90°

#### Heights

1.2m, 2.4m, 3.66m



30mm, 50mm  
or 75mm

### Aluminium Corner Guard



Angles  
90° | 19mm, 38mm wings

Heights  
1.2m, 2.4m

- Product to be installed with adhesive.



19mm  
or 38mm

### 130 Corner Guard



Materials  
PVC-u

Colours  
• Standard solid colours  
• Woodlands

Angles  
135° | 76mm wing

Heights  
1.2m, 2.4m, 3.66m

- Custom bendable aluminium retainer with flexible top caps available.



76mm x 76mm

### Clear Polycarbonate Corner Guard



Angles  
90° and 135° | 19mm, 29mm, 64mm wings

Heights  
1.2m, 2.4m

- Custom sizes available, please call for details.



29mm  
or 19mm



64mm

Not provided with pre-drilled holes.

### 150 Corner Guard



Materials  
PVC-u

Colours  
• Standard solid colours  
• Woodlands

Angles  
90° | 76mm wing

Heights  
1.2m, 2.4m, 3.66m

- Custom bendable aluminium retainer with flexible top caps available.



76mm x 76mm



End wall option  
76mm x 76mm

### NuTree® Corner Guard



Materials  
Post-consumer recycled No.2 plastic

Colours  
• Black only

Angles  
90° | 80mm wing

Heights  
2.4m

- Multiple heights and thicknesses available. Please reference Part Number Index for more information.



80mm x 80mm

### 160 Corner Guard



Materials  
PVC-u

Colours  
• Standard solid colours  
• Woodlands

Angles  
90° | 51mm wing

Heights  
1.2m, 2.4m, 3.66m

- Custom bendable aluminium retainer with flexible top caps available.



51mm x 51mm



End wall option  
51mm x 51mm

### 130F Flush Mount



Materials  
PVC-u

Colours  
• Standard solid colours  
• Woodlands

Angles  
135° | 76mm wing

Heights  
1.2m, 2.4m, 3.66m



76mm x 76mm

### 150F Flush Mount



Materials  
PVC-u

Colours  
• Standard solid colours  
• Woodlands

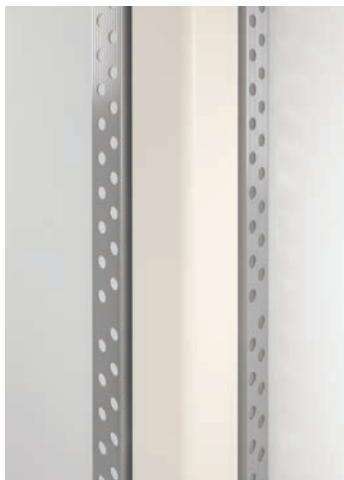
Angles  
90° | 76mm wing

Heights  
1.2m, 2.4m, 3.66m



76mm x 76mm

### 160F Flush Mount



Materials  
PVC-u

Colours  
• Standard solid colours  
• Woodlands

Angles  
90° | 51mm wing

Heights  
1.2m, 2.4m, 3.66m



51mm x 51mm



## Queen Elizabeth University Hospital Glasgow, UK

The 26,000 sq. meter facility is one of the biggest critical care complexes in Europe. Spanning across 14 floors, the hospital was built to replace four aging hospitals in Glasgow.

About 40,000 linear meters of IPC® Door + Wall Protection were installed throughout the hospital including:

- Sanparrel™ Rigid Sheet
- Handrails
- Corner Guards

Other products used within the project were high impact corner guards to protect the most vulnerable parts of the building and Sanparrel™ PVC-u sheeting to help reduce and conceal the effects of impact and abrasion.



# Wall Protection

Design your walls with added protection.

Whether you're looking to protect your lobby or maintenance room, we have products to accommodate your every need.

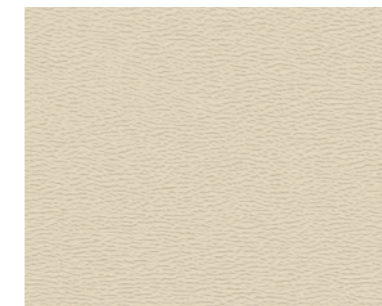


## Sanparrel™ Sheet

Durable, long lasting and easy to clean.

Sanparrel™ Sheet provides a complete range of protection for your vertical surfaces. It ensures reliable wall protection that is durable, long lasting and easy to clean.

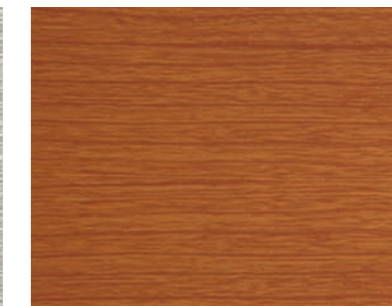
Standard solid colours



Elements patterns



Woodland



### Sanparrel™ Sheet advantages:

- Made from PVC-u.
- Thicknesses: 1mm, 1.5mm and 2mm\*.
- Low maintenance velvet texture.
- Variety of trim accessories.

\*Custom thickness, minimum requirements apply.

## Trim Options

Damaged walls leave a lasting impression on patients and staff. Make sure the walls in your facility are conducive to a healing environment and won't leave your maintenance staff making endless repairs.

Solid coloured trim



Stainless steel trim



Faux metal trim



Aluminium trim

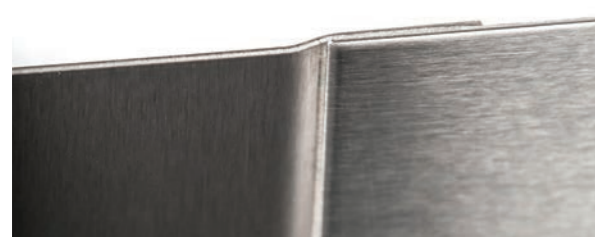


## Stainless Steel Wall Panels

Strong protection with a sleek look.

Stainless steel wall panels provide unmatched protection for the walls of your facility. We take the ease of installation to another level with pre-manufactured panels that are ready to go without on-site cutting required. Even more, our panels feature formed edges that provide a flat seam for a smooth, subtle and continuous transition where dirt won't be able to hide.

- 18 gauge type 304 stainless steel #4 brushed finish standard.
- 14, 16 and 20 gauge available.
- Factory fabricated to size.
- Maximum panel size: 1.2m x 3m.
- Type 430 available.
- Formed edge for continuous transitions.
- Available corner trim.



Front view

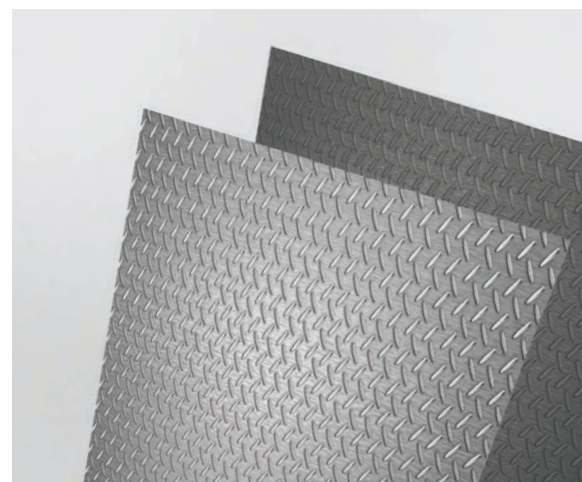


Back view

## NuTree® Durability matters.

NuTree® is a high-impact, heavy-duty solution for those areas in your building that take the toughest abuse. These products are great for back of house or maintenance areas that suffer the endless damage caused by carts, heavy equipment and more.

### NuTree® Diamond Plate Sheet



Durable diamond plate design is manufactured from Medium Density Polyethylene (MDPE), providing heavy-duty protection in back-of-house areas and loading docks.

Standard size: 1.2m x 2.4m

- Sheets are easy to cut and mount to the wall with fasteners.



## Tools and Adhesives

### Inpro® iBond Adhesive



Sizes

- 531 - 4.5ltrs
- 541 - 22.7ltrs

- Adhere Rigid Sheet and Extruded Rubrails firmly to the wall.
- Water-based, trowel-on mastic.
- Allow for repositioning during installation.
- Non-flammable and virtually odourless.
- Mold and mildew resistant, does not promote the growth of bacteria.
- Freeze-thaw stable adhesive allows shipping during any time of the year.
- 4.5ltrs will adhere approximately four 1.2m x 2.4m sheets.
- 22.7ltrs will adhere approximately twenty-one, 1.2m x 2.4m sheets.

### IPC® Vinylseal



Sizes

- 580 - 28.5ml Cartridge

- Fill seams and joints on Sanparrel™ Sheet and profile products.
- Available in standard colours.

### Notched Trowel



545 - Trowel

- Specifically designed to quickly and uniformly spread Inpro® iBond adhesive.
- Custom designed 3mm v-notch increases adhesive coverage.

### Extension Roller



333 - Extension Roller

- Aids in the installation of Vinyl Sheet, Door Face Protection and Extruded Rubrails.
- Features a telescoping handle, triple roller and raised grip.

### Vinyl Removal Tool



340 - Vinyl Removal Tool

- Designed with an offset, smooth blade for safe and easy removal of vinyl covers for replacement or maintenance.
- Non-slip textured vinyl grip for comfort and control.
- Can be used on all vinyl covers for handrails, wall guards, chair rails and corner guards.

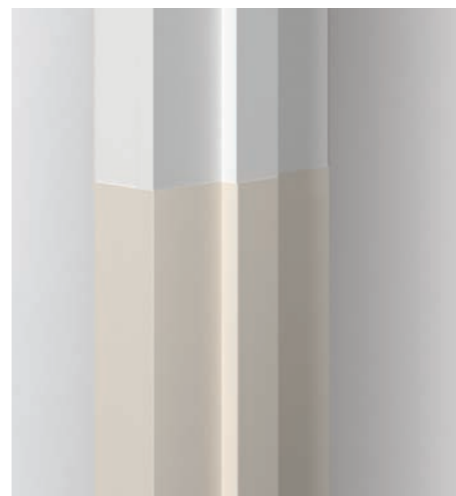
# Door Protection

Protection for all areas of your doorway.

Doors, door frames and door accessories are necessities in buildings. They can also take a great deal of mistreatment. IPC® Door Protection products are made with our PVC-u material so they are sure to withstand incessant abuse. From Door Frame Protection to Door Face Protection, our products will help keep your door areas pristine.



## Custom Door Frame Guards



**Materials**

- PVC-u

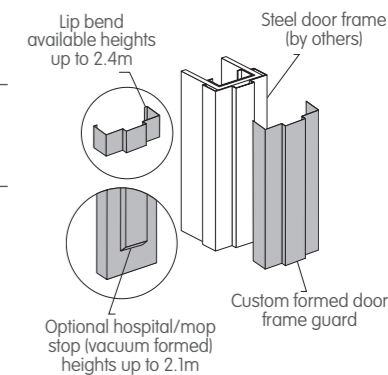
**Colours**

- Standard solid colours
- Woodlands

**Standard Heights**  
915mm, 1.2m, 2.4m

- Install with contact cement.

Door Edge Protectors are custom products and are not returnable.



## 1700 Door Frame Guards

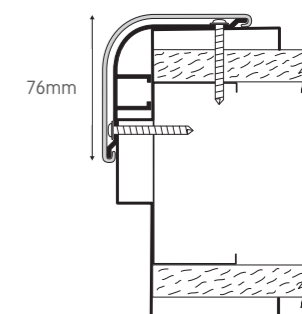


**Materials**

- PVC-u

**Colours**

- Standard solid colours
- Woodlands



## Door Edge Protector



**Materials**

- PVC-u

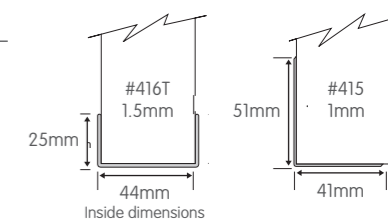
**Colours**

- Standard solid colours
- Woodlands

**Standard Heights**  
915mm, 1.2m, 2.4m

- Install with contact cement.

Door Edge Protectors are custom products and are not returnable.



# Door Face Protectors

Don't let heavy traffic lead to damage.

Doors are relentlessly pushed, banged and kicked open. Keep your doors and their surrounding environments in pristine condition.

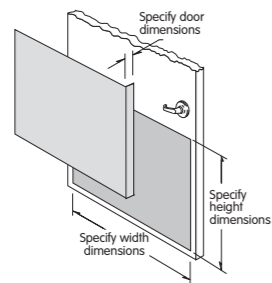
## PVC-u Door Face Protector



Materials  
PVC-u

Colours

- Standard solid colours
- Elements
- Woodlands



## Stainless Steel Door Face Protector

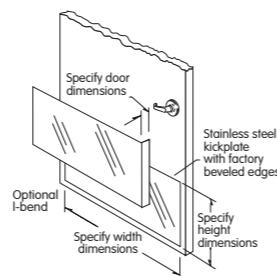


Materials

Stainless Steel Door Face Protection offers a #4 satin finish.

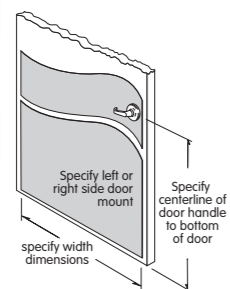
- Conforms to NSF Standard 51 for direct food contact in food service areas (Type 304 Stainless Steel).

- Type 430 or 304
- 14, 16 or 18 gauge



Door Face Protection are custom products and are not returnable.

## Designer Model 10

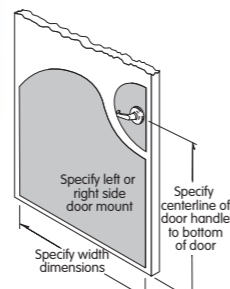


Materials  
• PVC-u

Colours

- Standard solid colours
- Elements
- Woodlands

## Designer Model 20



Materials  
• PVC-u

Colours

- Standard solid colours
- Elements
- Woodlands

## Designer Model 30



Materials  
• PVC-u

Colours

- Standard solid colours
- Elements
- Woodlands

# Colour Guide

## Standard solid colours

 LRV 78.7 Designer White <b>0101</b>	 LRV 77.0 White Sand <b>0103</b>	 LRV 71.1 Clam Shell <b>0154</b>	 LRV 68.4 Eggshell <b>0111</b>	 LRV 43.4 Burlap <b>0252</b>	 LRV 70.5 Light Beige <b>0109</b>
 LRV 56.9 Beeswax <b>0249</b>	 LRV 77.77 Canary <b>1050</b>	 LRV 69.84 Sunny Day <b>1051</b>	 LRV 34.21 Honey <b>1053</b>	 LRV 51.3 Sherbet <b>1052</b>	 LRV 36.69 Mandarin <b>1054</b>
 LRV 9.6 Truffle <b>0284</b>	 LRV 7.7 Cabernet <b>0241</b>	 LRV 11.2 Cardinal <b>0236</b>	 LRV 55.21 Mint <b>1056</b>	 LRV 59.33 Aloe <b>1057</b>	 LRV 19.82 Clover <b>1058</b>
 LRV 34.8 Crystal Jade <b>0187</b>	 LRV 16.6 English Green <b>0125</b>	 LRV 49.09 Cloudy <b>1059</b>	 LRV 25.5 Buoyant Blue <b>0132</b>	 LRV 19.5 Periwinkle <b>0272</b>	 LRV 8.9 Point Blue <b>0165</b>
 LRV 15.8 Purple Haze <b>0171</b>	 LRV 17.36 Orchid <b>1055</b>	 LRV 52.0 Taupe <b>0113</b>	 LRV 22.4 River Rock <b>0351</b>	 LRV 48.1 Silver <b>0105</b>	 LRV 37.1 Dove Gray <b>0106</b>
 LRV 17.5 Pewter Gray <b>0107</b>	 LRV 42.2 Sharkskin <b>0350</b>	 LRV 10.8 Castle <b>0256</b>	 LRV 4.5 Black <b>0152</b>		

## Woodland patterns

Woodlands offer a wood grain appearance without the maintenance of traditional wood.

 LRV 57.7 Natural Maple <b>0531</b>	 LRV 30.5 Applewood <b>0537</b>	 LRV 15.9 Honeynut <b>0535</b>	 LRV 9.2 Boston Cherry <b>0534</b>	 LRV 37.3 Santa Rosa <b>0532</b>	 LRV 6.3 American Walnut <b>0555</b>
---	---------------------------------------	--------------------------------------	--	--	--

## Elements patterns

 LRV 37.1 Brushed Silver <b>5E025</b>	 LRV 17.5 Brushed Nickel <b>5E026</b>
---	---

Due to the printing process, colours may vary. For accurate colour selection, please request samples. Visit [inprocorp.com](http://inprocorp.com) for more information.

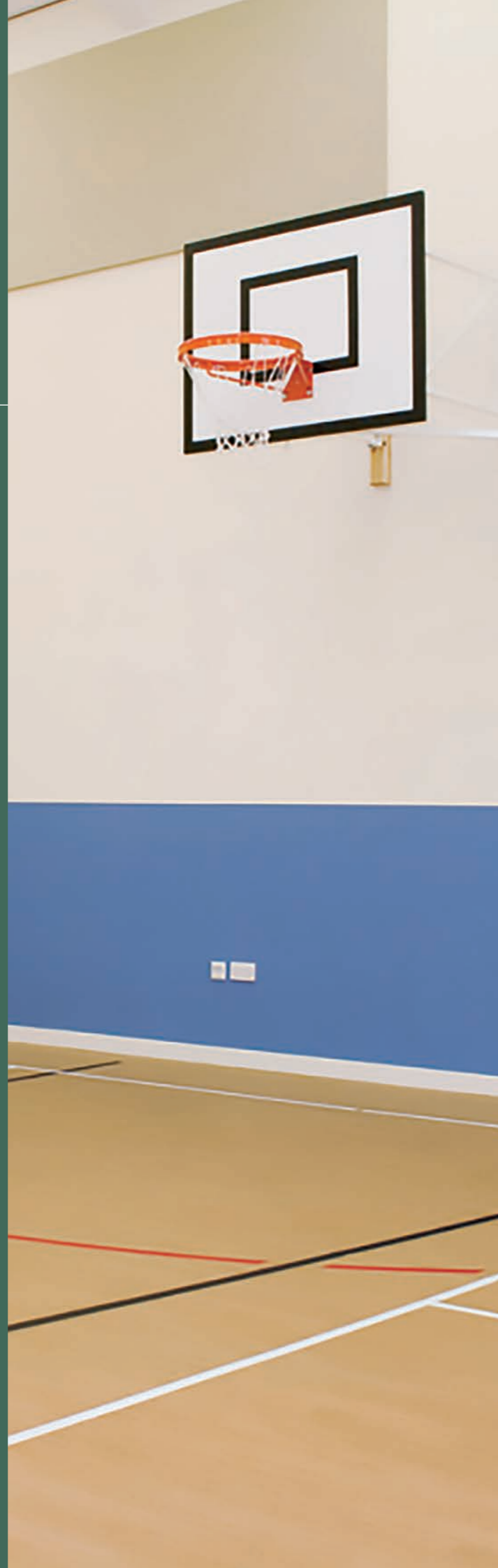




# Oakfield High School Wigan, UK

Oakfield High School added IPC® Sanparrel Rigid Sheet and rubrails to protect the school's cutting edge design from damage.

IPC® Door + Wall Protection Systems provide a total protection package protecting from impact and abrasion from busy hallways and other equipment.



## IPC® Product Characteristics



### Fire Performance:

Tested in accordance with EN ISO 11925-2:2010 and EN 13823:2010+A1:2014 and classified according to EN 13501-1:2007+A1:2009 as - Reaction to fire classification: B - s3, d0.



### Chemical Resistance:

Tested in accordance with BS EN ISO 175:2010. BS2782-8: Method 830A:1999. Plastics - Methods of test for the determination of the effects of immersion in liquid chemicals. The results show that the products as tested are resistant to most commonly used chemical solutions.



### Bacterial Resistance:

Tested in accordance with BS EN ISO 846:1997. Plastics - Evaluation of the action of microorganisms. The results show that the products as tested did not support bacterial growth.



### Fungal Resistance:

Tested in accordance with BS EN ISO 846:1997. Plastics - Evaluation of the action of microorganisms. The results show that the products as tested did not support fungal growth.



### VOC Emissions:

Tested in accordance with BS EN ISO 16000-9:2006. Indoor air - Part 9: Determination of the emission of volatile organic compounds from building products and furnishing - Emission test chamber method. The results show that the products as tested meet low emissions requirements.



### Fire Classification:

Tested in accordance with EN ISO 1195-2:2010 and EN 13823:2010 +A1:2014 and Classified according to EN 13501-1:2007+A1:2009 as - Reaction to fire classification: B-s3-d0 and B-s2-d0.



### RIBA:

Inpro® is a proud network member of the Royal Institute of British Architects (RIBA). We are able to provide informational resources that help you stay current on architectural trends and practices. RIBA champions better buildings, communities and the environment through architecture and we want to help you do the same. Through our membership, we provide the standards, training, support and recognition to help you excel in your profession.

Visit [inprocorp.com](http://inprocorp.com) for more information about RIBA certified presentations and CPD courses.

# Product Part Index

## Handrails

### 800 HANDRAIL

800 - 140mm Height with cover and Aluminium retainer  
1001 - Mounting Bracket  
802 - Return  
803 - Outside Corner  
803135 - 135° Outside Corner  
804 - Splice  
805 - Inside Corner  
805135 - 135° Inside Corner  
CBRKLF - + Continuous Mounting Bracket  
NOTE: Add suffix "W" to part number for Woodland finish.

### 900 ROUND STAINLESS STEEL HANDRAIL

900SSR-FT - 38mm Round SS HR  
909SS-SDL - SS Mounting Bracket  
902SSR-RET - 38mm round return pre-assembled  
903SSR-COR - 178mmx178mmx38mm round corner 90°  
903135SSR-COR - 178mmx178mmx38mm round corner 135°  
906SSR-SPL - Splice

### 910 ROUND HANDRAIL

910 - 38mm Round Grip w/ 2mm cover  
908 - Vinyl Mounting Bracket  
909SS - SS Mounting Bracket  
912 - Vinyl Left Return  
912SS - Stainless Steel Left/Right Return  
913 - Vinyl Right Return  
914 - Vinyl Outside Corner 90°  
914135 - Vinyl Outside Corner 135°  
914SS - Stainless Steel Inside/outside Corner  
915 - Vinyl Inside Corner  
NOTE: Add suffix "W" to part number for Woodland finish.

### 920 OVAL HANDRAIL

920 - 38mm Oval Grip w/ 2mm cover  
908 - Vinyl Mounting Bracket  
909SS - SS Mounting Bracket  
922 - Vinyl Left Return  
922SS - Stainless Steel Left/Right Return  
923 - Vinyl Right Return  
924 - Vinyl Outside Corner 90°  
924135 - Vinyl Outside Corner 135°  
924SS - Stainless Steel Inside/outside Corner  
925 - Vinyl Inside Corner  
NOTE: Add suffix "W" to part number for Woodland finish.

### 940 HANDRAIL

940 - 40mm Round Grip w/ 2mm cover  
941 - Aluminium Mounting Bracket  
942 - Left/Right Return  
944 - Vinyl Inside/Outside Corner  
941UK - Stainless Steel Mounting Bracket (UK only)  
942UK - Left/Right Return (UK only)  
NOTE: Add suffix "W" to part number for Woodland finish.

### 1000 HANDRAIL

1000 - 110mm Handrail 12'  
1002 - 110mm Left Return  
1003 - 110mm Right Return  
1004 - 110mm Outside Corner 90°  
1004135 - 110mm Outside Corner 135°  
1005 - 110mm Inside Corner 90°  
1005135 - 110mm Inside Corner 135°  
1001 - Handrail Mounting Bracket  
804 - Splice  
CBRKLF - Continuous Mounting Bracket  
NOTE: Add suffix "W" to part number for Woodland finish.

### 2000 HANDRAIL

2000 - 32mmx57mm Grip with 2mm Cover  
2001 - Mounting Bracket

2001SS - Stainless Steel Mounting Bracket  
2002 - Left Return  
2003 - Right Return  
2004 - Inside/Outside Corner  
2004135 - 135° Inside/Outside Corner  
906 - Splice

### 3110 ROUND HANDRAIL

3110 - 155mm H w/ Round Grip  
1001 - Mounting Bracket  
3112 - Left Return  
3113 - Right Return  
3114 - Outside Corner 90°  
3114135 - Outside Corner 135°  
3115 - Inside Corner 90°  
3115135 - Inside Corner 135°  
NOTE: Add suffix "W" to part number for Woodland finish.

### 3130 OVAL HANDRAIL

3130 - 155mm H w/ Oval Grip  
1001 - Mounting Bracket  
3132 - Left Return  
3133 - Right Return  
3134 - Outside Corner 90°  
3134135 - Outside Corner 135°  
3135 - Inside Corner 90°  
3135135 - Inside Corner 135°  
NOTE: Add suffix "W" to part number for Woodland finish.

### 3510 ROUND HANDRAIL

3510 - 200mm H w/ Round Grip  
3516 - Aluminium Splice Assembly  
3511 - Mounting Bracket  
3512 - Left Return  
3513 - Right Return  
3514 - Outside Corner 90°  
3514135 - Outside Corner 135°  
3515 - Inside Corner 90°  
3515135 - Inside Corner 135°

### 3530 OVAL HANDRAIL

3530 - 200mm H w/ Oval Grip  
3516 - Aluminium Splice Assembly  
3511 - Mounting Bracket  
3532 - Left Return  
3533 - Right Return  
3534 - Outside Corner 90°  
3534135 - Outside Corner 135°  
3535 - Inside Corner 90°  
3535135 - Inside Corner 135°

### 3400 HANDRAIL

3400 - 200mm H w/ 40mm Round Grip  
3501 - Mounting Bracket  
3401UK - Mounting Bracket (for UK only)  
3402UK - Left Return (UK only)  
3403UK - Right Return (UK only)  
3402 - Left Return  
3403 - Right Return  
3404 - Outside Corner 90°  
3405 - Inside Corner 90°

## Wall Guards

### EXTRUDED RUBRAIL

RR150 - 2mmx150mmx3.66m tape-on  
RR150N - 2mmx150mmx3.66m adhesive mount  
RR200 - 2mmx200mmx3.66m tape-on  
RR200N - 2mmx200mmx3.66m adhesive mount

For your ease of use, Inpro has a library of Autodesk® Revit® BIM objects available on our website.

### 2500 CHAIR RAIL

51mm high  
2500 - 1.8mm cover and 1.5mm continuous Aluminium retainer, 3.66m length  
2501 - End Cap  
2502 - Outside Corner  
2503 - Inside Corner  
2504 - Picture Frame Corner (Standard Solid Colors Only)  
NOTE: Add suffix "W" to part number for Woodland.

### 700 WALL GUARD

197mm high  
700 - Cover and Aluminium retainer, 3.66m length  
701 - End Cap  
702 - Outside Corner  
707 - Inside Corner (Not available in woodland pattern)  
706A - Optional Aluminium Splice  
801 - Optional Mounting Bracket  
1601 - Optional 12mm thick x 50mm diameter Rubber Spacer. Add suffix "W" to part number for Woodland.  
Add suffix "I" for infinity bracket.

### 1400 WALL GUARD

102mm high  
1400 - Cover and Aluminium retainer supports, 12' length  
1402 - End Cap  
1403 - Outside Corner  
1407 - Inside Corner  
501 - Optional 12mm thick x 50mm dia. Rubber Spacer  
\* 1400 is a custom product. Minimums apply and product is not returnable. Add suffix "W" to part number for Woodland. Add suffix "I" for infinity bracket.

### 1500 SILHOUETTE WALL GUARD

127mm high  
1500 - Cover and Aluminium retainer, 3.66m length  
1501L - Left End Cap  
1501R - Right End Cap  
1502 - Outside Corner  
1503 - Inside Corner  
1601 - Optional 12mm thick x 50mm Oval Rubber Spacer. Add suffix "W" to part number for Woodland. Add suffix "I" for infinity bracket.

### 1800 WALL GUARD

203mm high  
1800 - 203mm High Wall Guard with cover and Aluminium retainer, 3.66m length  
1601 - Optional 12mm thick x 100mm Oval Rubber Spacer  
1801L - Left End Cap  
1801R - Right End Cap  
1802 - Outside Corner  
1803 - Inside Corner  
706A - Optional Aluminium Splice  
Add suffix "I" for infinity bracket. Add suffix "W" for woodlands.

### 1300 WALL GUARD

103mm high  
1300 - Cover and Aluminium retainer, 3.66m length  
1302 - End Cap  
1303 - Outside Corner  
1307 - Inside Corner  
501 - Optional 12mm thick x 50mm dia. Rubber Spacer

### 1600 WALL GUARD

152mm high  
1600 - Cover and Aluminium retainer, 3.66m length  
1622 - End Cap  
1623 - Outside Corner  
1627 - Inside Corner  
1606A - Optional Aluminium Splice  
801 - Optional Mounting Bracket

1601 - Optional 12mm thick x 50mm dia. Rubber Spacer  
Add suffix "I" for infinity bracket.

### 50SS STAINLESS STEEL WALL GUARD

102mm high  
50SS - 100mm High Stainless Steel Wall Guard, pre-assembled  
50SSLR - Stainless Steel Left Return  
50SSRR - Stainless Steel Right Return  
50SSOC - Stainless Steel Outside Corner  
50SSIC - Stainless Steel Inside Corner  
50AABK - Aluminium Bracket  
Contains up to 75% post-consumer recycled material.  
Factory pre-cut sections to field measurements non-returnable.

### HIGH IMPACT WALL BASE

102mm high  
WB4 - 10mm thick x 100mm high  
WB4LEC - Left End Cap  
WB4REC - Right End Cap  
WB4OC - Outside Corner  
WB4IC - Inside Corner  
Lead times may vary.

### NUTREE® WALL GUARD

140mm-241mm high  
NT-140, 12mm Thick x 203mm High x 3.66m Long  
NT - 518, 25mm Thick x 140mm High x 3.66m Long  
NT - 690, 38mm Thick x 140mm High x 3.66m Long  
NT - 694, 38mm Thick x 190mm High x 3.66m Long  
NT - 695, 38mm Thick x 241mm High x 3.66m Long  
Lead times may vary. Custom sizes and colors available with minimums.

## Corner Guards

### CORNER GUARD (NO-TAPE)

30 CGN - 30mmx30mmx2.4m, 90°  
50 CGN - 50mmx50mmx2.4m, 90°  
75 CGN - 75mmx75mmx2.4m, 90°  
NOTE: Add suffix "W" for Woodland.

### ALUMINIUM

90° | 19mm, 38mm wings  
DW-ALUM-3448 - 19mm x 19mm x 1.2m,90°  
DW-ALUM-3496 - 19mm x 19mm x 2.4m,90°  
DW-ALUM-11248 - 38mm x 38mm x 1.2m,90°  
DW-ALUM-11296 - 38mm x 38mm x 2.4m,90°  
Custom sizes available.

### CLEAR POLYCARBONATE CORNER GUARDS

90° and 135° | 19mm, 29mm, 64mm wings  
434\* - 19mm x 19mm x 1.2m, 90°  
834\* - 19mm x 19mm x 2.4m, 90°  
4118 - 29mm x 29mm x 1.2m, 90°  
8118 - 29mm x 29mm x 2.4m, 90°  
421290 - 64mm x 64mm x 1.2m, 90°  
821290 - 64mm x 64mm x 2.4m, 90°  
4212135 - 64mm x 64mm x 1.2m, 135°  
8212135 - 64mm x 64mm x 2.4m, 135°  
Custom sizes available, please call for details. \*Not provided with pre-drilled holes.

### NUTREE® CORNER GUARD

90° | 80mm Wing-black  
NT-CG11 - 80mm x 80mm x 2.4m

### 130 CORNER GUARDS

135° | 76mm wing  
134 - 76mm x 76mm x 1.2m, 135°  
138 - 76mm x 76mm x 2.4m, 135°  
139 - 76mm x 76mm x 2.74m, 135°  
1312 - 76mm x 76mm x 3.66m, 135°  
Note: Add suffix "W" for Woodland. Retainer. Custom bendable Aluminium retainer with flexible top caps available. US Patent 8,828,522.

### 130F FLUSH MOUNT CORNER GUARD

135° | 76mm wing  
134F - 76mm x 76mm x 1.2m, 135°  
138F - 76mm x 76mm x 2.4m, 135°  
139F - 76mm x 76mm x 2.74m, 135°  
1312F - 76mm x 76mm x 3.66m, 135°  
130B-4 - 1.2m Cove Base Retainer  
130B-6 - 1.8m Cove Base Retainer  
130F-Cap - Closure Cap

### 150 CORNER GUARDS

90° | 76mm wing  
154 - 76mm x 76mm x 1.2m, 90°  
158 - 76mm x 76mm x 2.4m, 90°  
159 - 76mm x 76mm x 2.74m, 90°  
1512 - 76mm x 76mm x 3.66m, 90°  
Add suffix "W" for Woodland. Custom bendable Aluminium retainer with flexible top caps available. US Patent 8,828,522.

### 150F FLUSH MOUNT CORNER GUARD

90° | 76mm wing  
154F - 76mm x 76mm x 1.2m, 90°  
158F - 76mm x 76mm x 2.4m, 90°  
159 - 76mm x 76mm x 2.74m, 90°  
159F - 76mm x 76mm x 2.74m, 90°  
1512F - 76mm x 76mm x 3.66m, 90°  
150B-4 - 1.2m Cove Base Retainer  
150B-6 - 1.8m Cove Base Retainer  
150F-Cap - Closure Cap

### 160 CORNER GUARDS

90° | 51mm wing  
164 - 51mm x 51mm x 1.2m, 90°  
168 - 51mm x 51mm x 2.4m, 90°  
169 - 51mm x 51mm x 2.74m, 90°  
1612 - 51mm x 51mm x 3.66m, 90°  
Note: Add suffix "W" for Woodland. Custom bendable Aluminium retainer with flexible top caps available. US Patent 8,828,522.

### 160F FLUSH MOUNT CORNER GUARD

90° | 51mm wing  
164F - 51mm x 51mm x 1.2m, 90°  
168F - 51mm x 51mm x 2.4m, 90°  
169F - 51mm x 51mm x 2.74m, 90°  
1612F - 51mm x 51mm x 3.66m, 90°  
160B-4 - 1.2m Cove Base Retainer  
160B-6 - 1.8m Cove Base Retainer  
160F-Cap - Closure Cap

## Wall Protection

### SANPARREL™ SHEET - SOLID COLORS

405 - 1mm Thick, 1.2m x 2.4m (Standard size)  
406 - 1.5mm Thick, 1.2m x 2.4m (Standard size)  
Visit inprocorp.com/ipc for specific size and thickness information.

### SANPARREL™ SHEET - ELEMENT PATTERNS

405E - 1mm Thick, 1.2m x 2.4m (Standard size)  
406E - 1.5mm Thick, 1.2m x 2.4m (Standard size)

### SANPARREL™ SHEET - WOODLAND PATTERNS

405W - 1mm Thick, 1.2m x 2.4m (Standard size)  
406W - 1.5mm Thick, 1.2m x 2.4m (Standard size)

### SOLID COLORED TRIM

Available in PVC-u  
407-Top Cap, 2.4m length  
408-Vertical Divider Bar, 2.4m length  
409-Inside Corner, 2.4m length  
\* 3m Trim Available

### STAINLESS STEEL TRIM

DW-SSTC08 Top Cap, 2.4m length  
DW-SSDB08 Vertical Divider Bar, 2.4m length  
\* 3m Trim Available

### FAUX METAL TRIM

in Bright Silver PVC-u Only  
407M-0369 Top Cap, 2.4m length  
408M-0369 Vertical Divider Bar, 2.4m length  
409M-0369 Inside Corner, 2.4m length  
\* 3m Trim Available

### ALUMINIUM TRIM

in Clear Anodized Satin Finish  
407A-CL Top Cap, 2.4m length  
408A-CL Vertical Divider Bar, 2.4m length  
409A-CL Inside Corner, 2.4m length  
420A-CL Outside Corner, 2.4m length  
421A-CL Outside Corner, 3m length

## Door Protection

### NUTREE® DIAMOND PLATE SHEET

NT-DP4896-BLK - 4.7mm thick, 1.2m x 2.4m  
NT-DP4896-GRY - 4.7mm thick, 1.2m x 2.4m

### 1700 DOOR FRAME GUARD

1736 - 76mm x 76mm x .9m with 2mm cover and 2mm Aluminium retainer  
1748 - 76mm x 76mm x 1.2m with 2mm cover and 2mm Aluminium retainer  
1796 - 76mm x 76mm x 2.4m with 2mm cover and 2mm Aluminium retainer

### CUSTOM DOOR FRAME GUARDS

Available in 1mm thickness  
400C - .9m Height, up to 292mm Width  
399C - .9m Height, over 292mm Width  
398C - 1.2m Height, up to 292mm Width  
397C - 1.2m Height, over 292mm Width  
396C - 2.4m Height, over 292mm Width  
395C - 2.4m Height, up to 292mm Width  
Hospital mop stop frames are available. Custom Formed Door Frame Guards are custom products and are not returnable. Designed for metal frames only.

### DOOR EDGE PROTECTOR

Available in 1mm thickness - PVC-u  
415 - .9m Height, Long-shape, with factory applied adhesive  
415N - .9m Height, Long-shape, without adhesive  
41596 - 2.4m Height, Long-shape, with factory applied adhesive  
41596N - 2.4m Height, Long-shape, without adhesive  
416TC - .9m Height, textured U-shape, cement-on  
416TS - .9m Height, textured U-shape, screw-on  
41696TC - 2.4m Height, textured U-shape, cement-on  
41696TS - 2.4m Height, textured U-shape, screw-on  
Door Edge Protectors are custom products and are not returnable.

### PVC-U DOOR FACE PROTECTION

SPECIFY YOUR HEIGHT AND WIDTH.

K4 - .1mm Thick  
K6 - 1.5mm Thick  
K8\* - 2mm Thick

\*2mm thick. Minimum order requirements may apply. Door Face Protectors are a custom product and are not returnable.

### STAINLESS STEEL DOOR FACE PROTECTION

Stainless Steel Door Face Protection offers a #4 satin finish  
SS-KP - Type 430 or 304, 16 Gauge  
SS-KP - Type 430 or 304, 16 Gauge w/Long-Bend  
Cement-on or screw-on options available. 14 & 18 gauge alloys are also available. Stainless Steel Door Face Protectors are custom products. Products are not returnable. Custom shapes available.

### DESIGNER DOOR FACE PROTECTION

K41 - 1mm Thick - Model 10  
K61 - 1.5mm Thick - Model 10  
K42 - 1mm Thick - Model 20  
K43 - 1mm Thick - Model 30  
K62 - 1.5mm Thick - Model 20  
K63 - 1.5mm Thick - Model 30  
Designer Door Face Protectors are custom products. Set-up charges apply and products are not returnable.