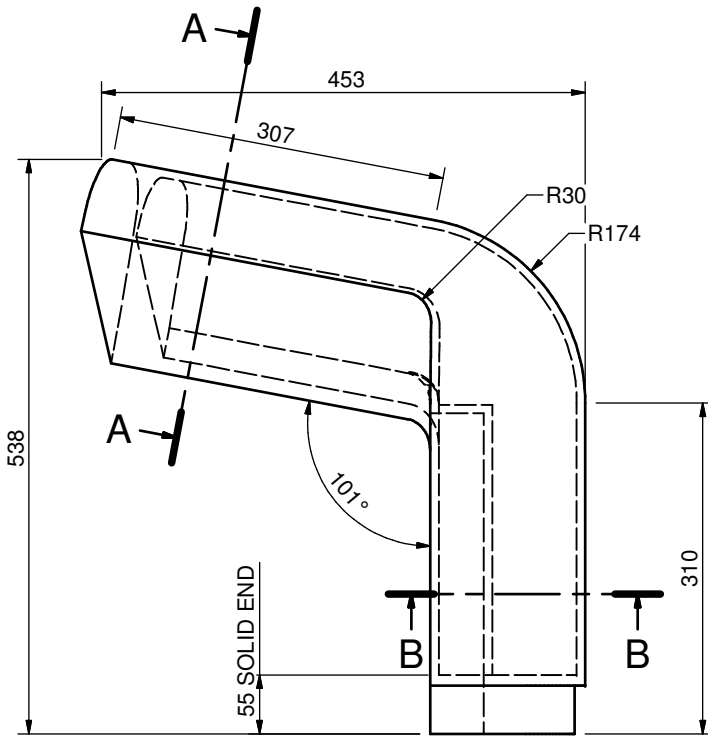
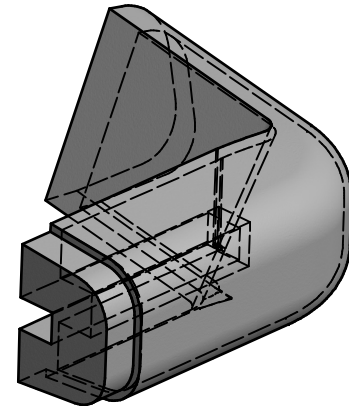
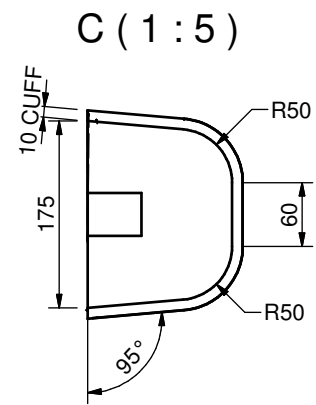
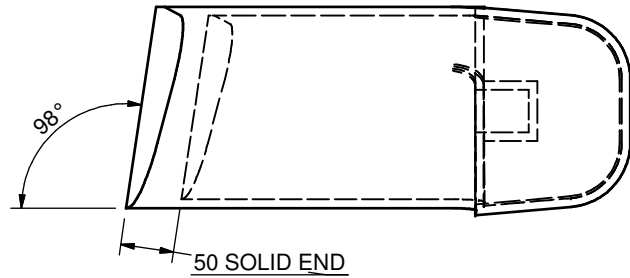
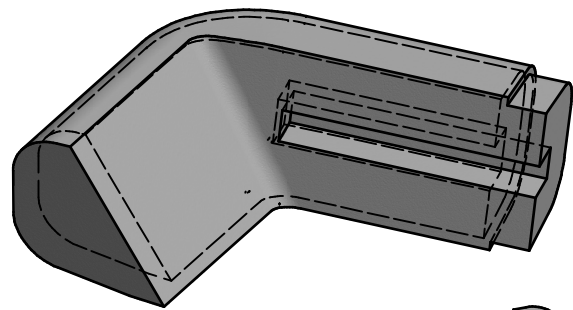


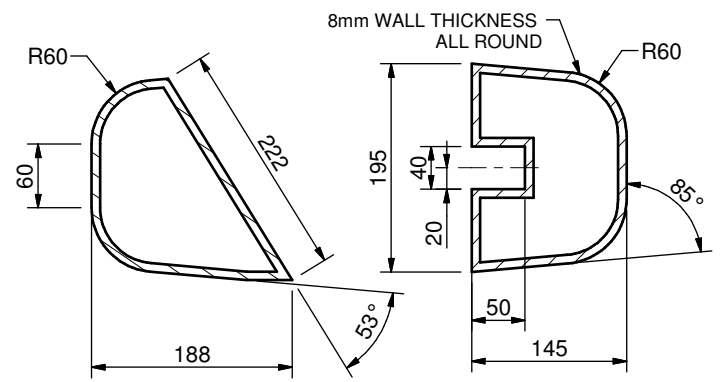
REV	DATE	DRAWN	CHECK	REL No.	DESCRIPTION
1	06/07/2015	IM		-	INITIAL ISSUE

NOTE:
 FULL 3D MODEL AVAILABLE (DWG NO 42392)
 FOR CNC MOULD MAKING WHICH IS THE
 PREFERRED METHOD



A-A (1:5)

B-B (1:5)



UNLESS OTHERWISE SPECIFIED
 DIMENSIONS ARE IN MM

FRACT	X.	DECIMALS	ANGLES
$\frac{1}{32}$	± 2	± 0.10	$\pm 2^\circ$

COPYRIGHT FENDERCARE LIMITED
 DIMENSIONS AND TOLERANCES PER ISO 8015:2011
 REMOVE BURRS AND SHARP EDGES
 ALL DIMS IN MILLIMETRES UNLESS OTHERWISE STATED
 DO NOT SCALE DRAWING DO NOT PASS TO A THIRD PARTY

THIS DRAWING MAY CALL FOR THE USE OF
 PROCEDURES THAT MAY BE INJURIOUS TO HEALTH IF
 ADEQUATE PRECAUTIONS ARE NOT TAKEN. IT REFERS
 ONLY TO TECHNICAL SUITABILITY AND DOES NOT
 ABSOLVE THE USER FROM LEGAL OBLIGATIONS
 RELATING TO HEALTH AND SAFETY AT ANY STAGE

fendercare
 marine

ENTERPRISE HOUSE HARVEYS LANE
 SEETHING NORFOLK NR15 1EN ENGLAND
 TEL +441508 483705 FAX +441508 482710
 EMAIL: sales@fendercare.com

MATERIAL:	Polyurethane Elastomer		
FINISH:	AS CAST		
ESTIMATED MASS:	5.521 kg		
DRAWN:	IM	SCALE:	1:5
CHECKED:		DATE:	06/07/2015

TITLE:
**WALLY 45 FENDER SET - AFT
 CORNER CAST SECTION -
 POLYURETHANE ELASTOMER**

SHEET: DRAWING No:
 1 OF 1 **42393** Issue: 1 A3

