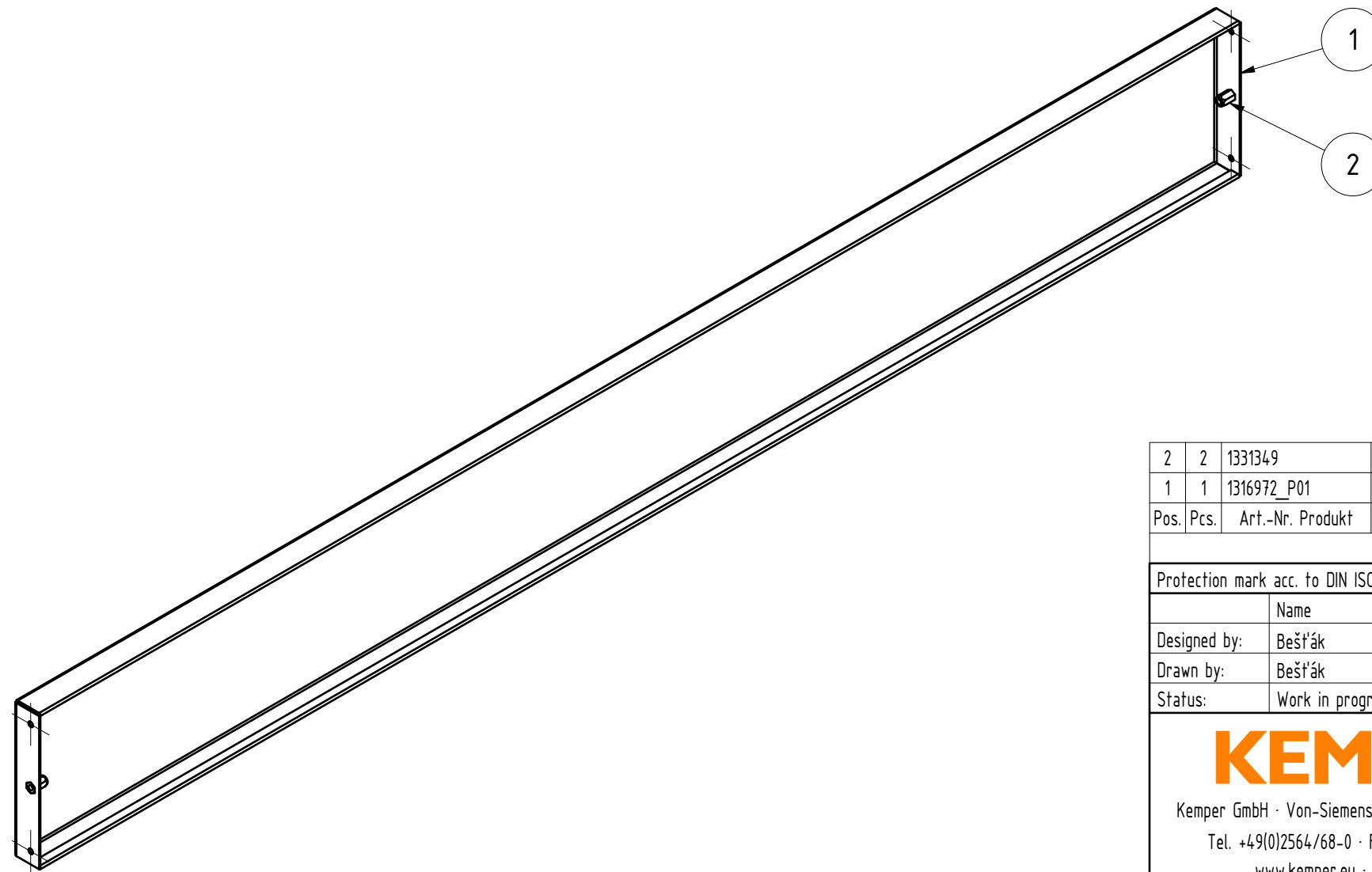
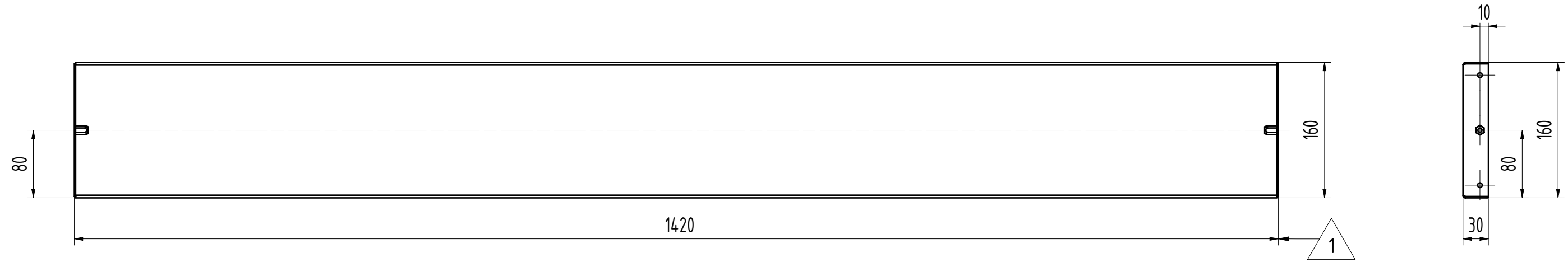


REVISION TABLE				
Zone	Rev	Description	Date	Performed by
	1	Upravena délka na 1420mm.	13.03.2020	Bestak



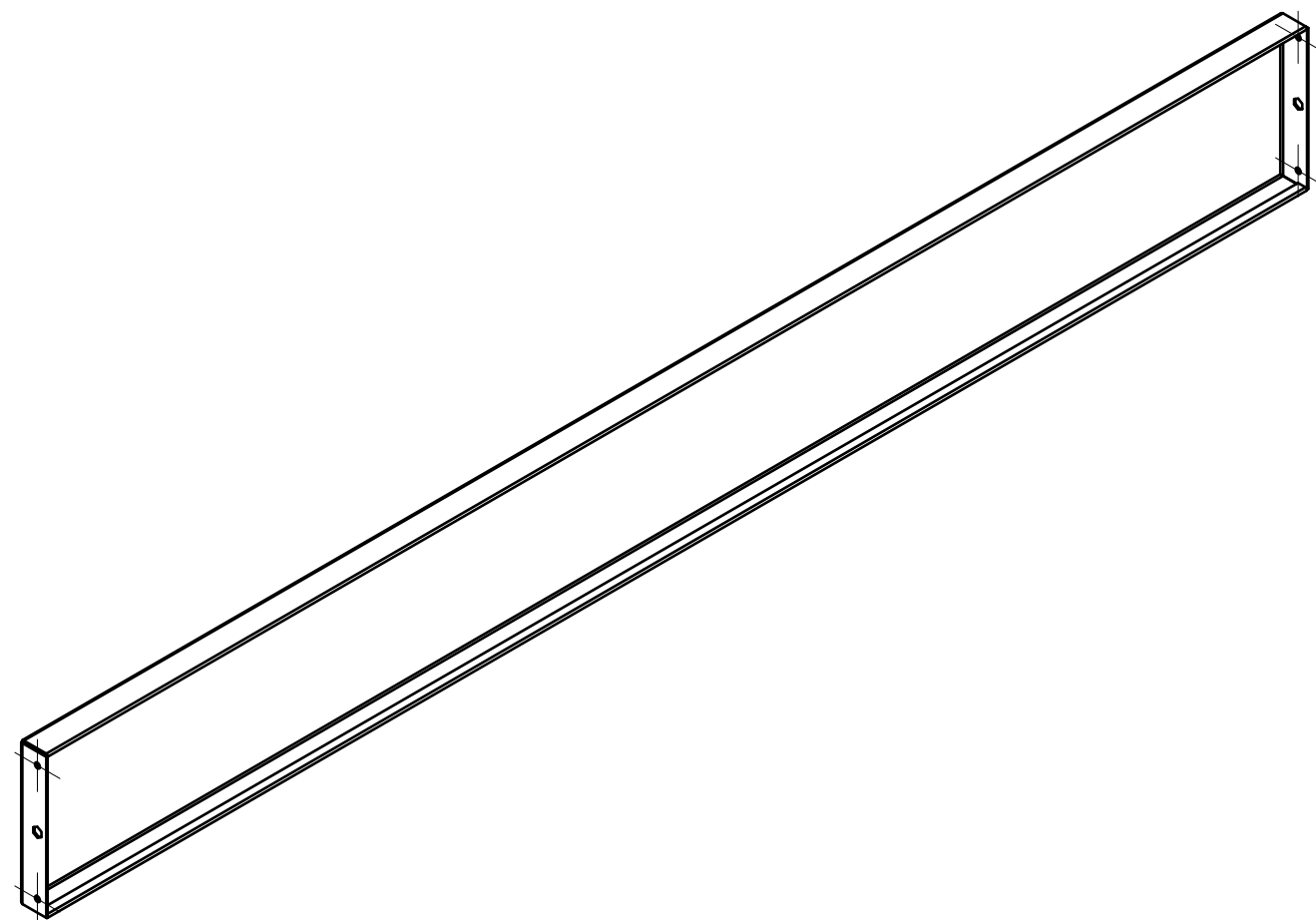
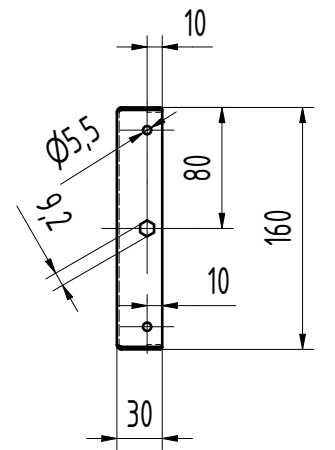
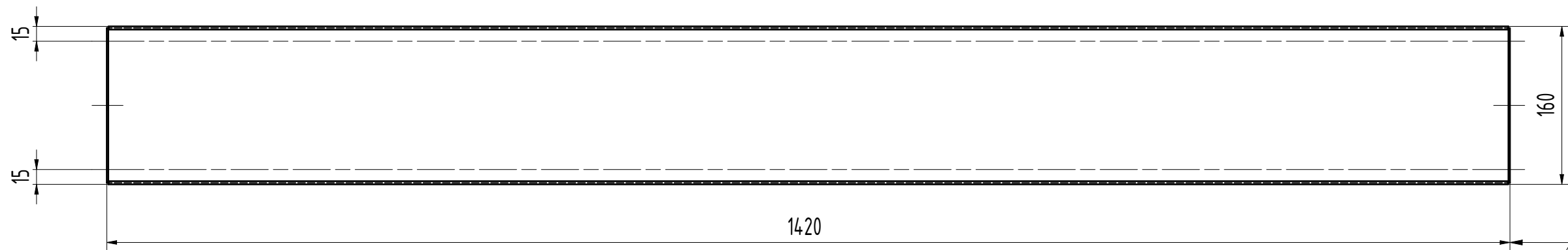
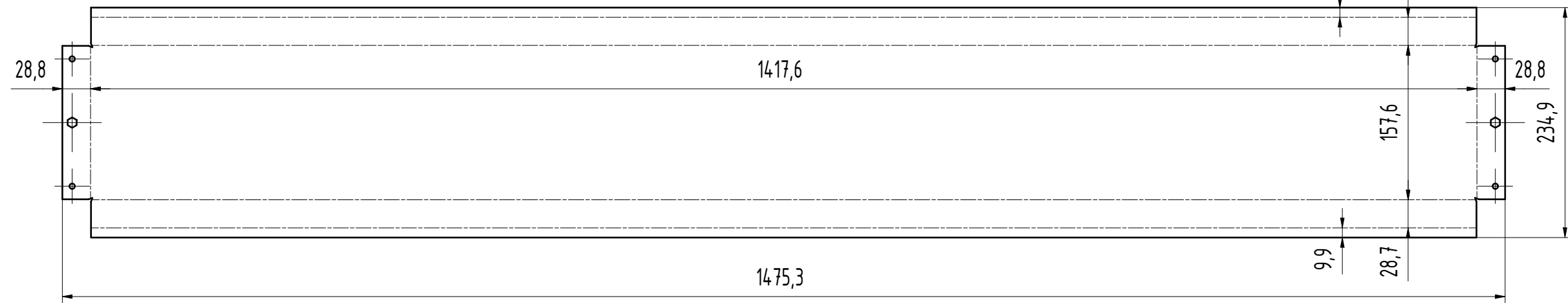
Pos.	Pcs.	Art.-Nr. Produkt	Item name	Abwicklungsmaße	Material	Weight	Art.-Nr.Halbf.
2	2	1331349	Einnietmutter Kleine-Senkopf Skt. offen M6 L=16 mm		Verz.BL	0.006 kg	1331349
1	1	1316972_P01	Kassette	1,5 x 1475,3 x 234,9	Aluminium	1.383 kg	

PARTS LIST							
Protection mark acc. to DIN ISO 16016		General tol. EN ISO 2768 -mK		Tol. with ISO 8015		Yes	
Designed by: Bešfák		Date: 15.08.2019		Replaces:		Semi-produkt:	
Drawn by: Bešfák		Date: 15.08.2019		Replacement date:			
Status: Work in progress		Model: 1316972.iam		Scale: 1:5		Weight: 1.40 kg	
Unfold:							

<p><b>KEMPER®</b></p> <p>Kemper GmbH · Von-Siemens-Str. 20 · D-48691 Vreden            Tel. +49(0)2564/68-0 · Fax +49(0)2564/68-120            www.kemper.eu · mail@kemper.eu</p>			Item name: Kassette		List/Sheet
					1 / 2
Material :					Format
Projection: ISO E			Drawing no: 1316972		A3
			Document type:		

REVISION TABLE				
Zone	Rev	Description	Date	Performed by
	1	Upravena délka na 1420mm.	13.03.2020	Bestak

Q; Alu\_\_1,5mm\_W=10



Protection mark acc. to DIN ISO 16016		General tol. EN ISO 2768 -mK		Tol. with ISO 8015	Yes
Name	Date	Replaces:		Semi-produkt:	
Designed by: Bešfák	15.08.2019	Replacement date:			
Drawn by: Bešfák	15.08.2019	Model:	1316972_P01.ipt	Scale:	Weight:
Status: Work in progress		Unfold:	Blechzuschnitt 1,5 x 1475,3 x 234,9	1 : 5	1.38 kg
<b>KEMPER</b> Kemper GmbH · Von-Siemens-Str. 20 · D-48691 Vreden Tel. +49(0)2564/68-0 · Fax +49(0)2564/68-120 www.kemper.eu · mail@kemper.eu		Item name:			List/Sheet
		Kassette			2 / 2
		Material :	Aluminium	Format	
		Drawing no: 1316972_P01			A3
Projection: ISO E		Document type:			