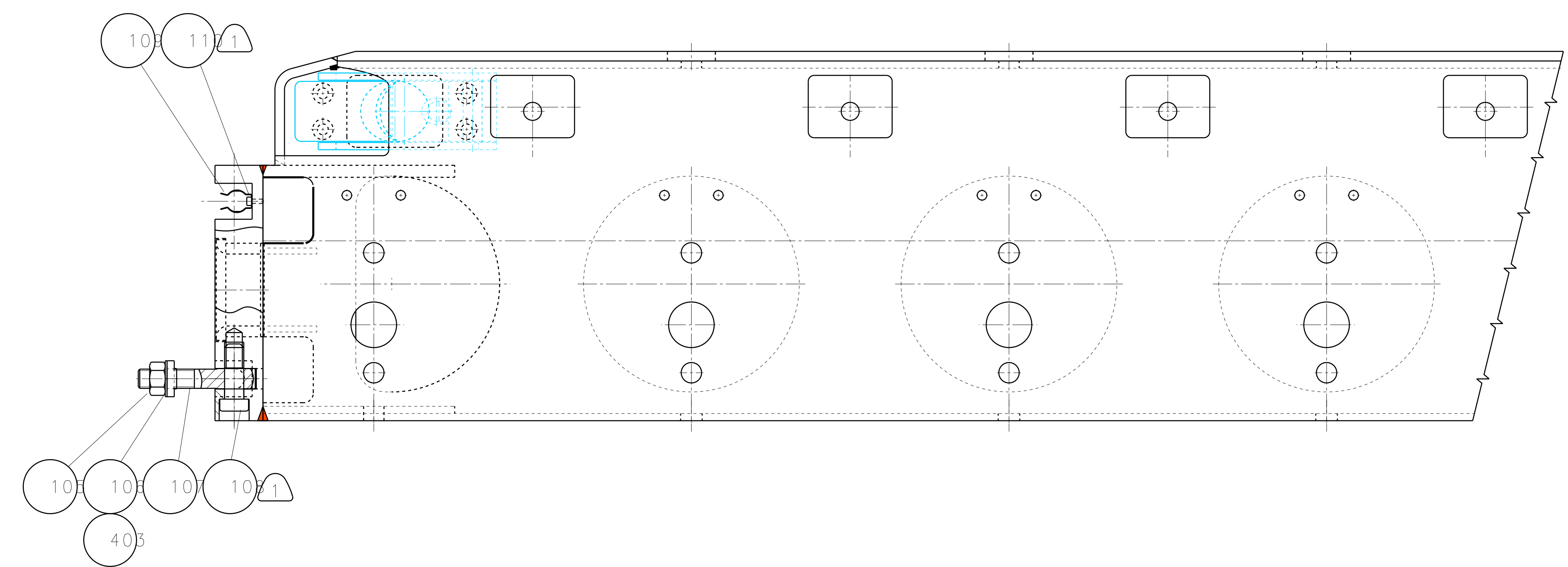
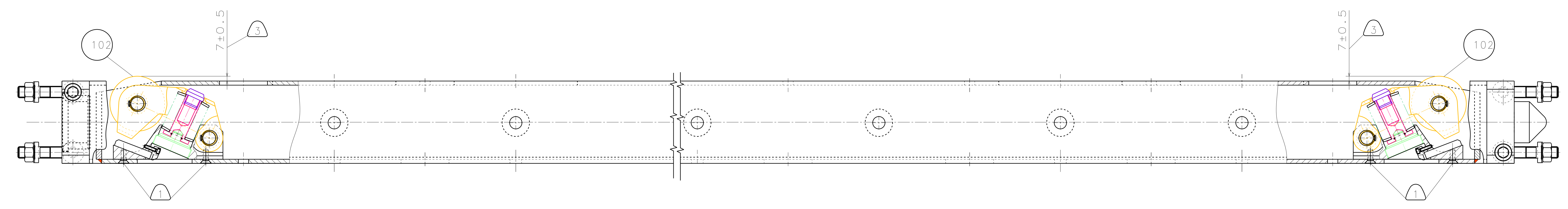
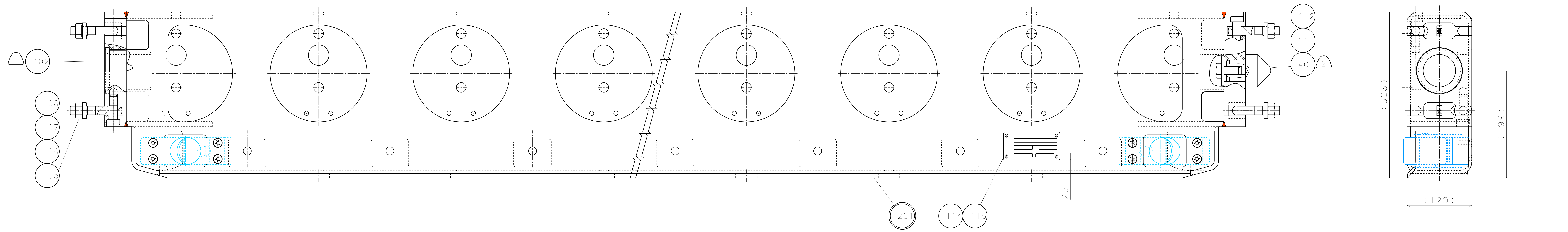
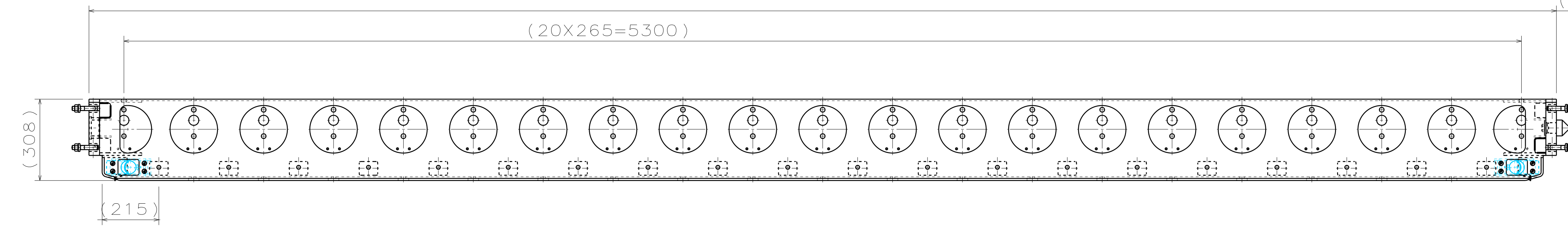


(5565±0.5 INCL. SURFACE PROTECTION / INKL. OBERFLAECHENSCHUTZ)

05.01.94	ZECH			A00
15.03.94	ZECH			A01
12.05.94	ZECH			A06
27.06.94	ZECH			A07
13.01.97	ZECH	PART 403 ADDED		A08
29.07.97	SCHOENB.	MOD. SURFACE PROTECTION "MECHANICAL PLATED"		A12
		UPDATE		A13

GENERAL VIEW  
SCALE 1:10



**WEIGHT OF SUBUNIT:**  
M = 252.0 KG  
**BAUGRUPPENGEWICHT:**  
M = 252.0 KG

**SURFACE PROTECTION:**  
SPRAY GALVANIZATION (OUTSIDE) THICKNESS 0.15-0.20  
PAINTING RAL7016 (INSIDE) 0.18  
**OBERFLAECHENSCHUTZ:**  
SPRITZVERZINKUNG (AUSSEN) SCHICHTDICKE 0.15-0.20  
ANSTRICH RAL7016 (INNEN) 0.18

**SURFACE FINISH:**  
FOR ALL FITS ✓  
FOR ALL THRUHOLES AND THREADHOLES ✓  
FOR ALL TUBE CUTOUPS ✓  
UNFINISHED SURFACE ✓  
**OBERFLAECHENQUETE:**  
ALLE PASZBOHRUNGEN ✓  
ALLE DURCHGANGS- UND GEWINDEBOHRUNGEN ✓  
ALLE ROHRAUSSCHNITTE ✓  
UNBEARBEITETE FLAECHEEN ✓

- 3 ADJUSTING VALUE  
EINSTELLMASZ
- 2 INSTALL WITH MOLYKOTE 55M  
EINBAU MIT MOLYKOTE 55M
- 1 LOCKED WITH LOCTITE 601  
GESICHERT MIT LOCTITE 601

115	1	MBBN622-01 AL	NAME PLATE			ENGLISH
114	4	DIN1476-3x6 AL	RIVET			
113						
112	1	DIN933-M16x35-10.9-VDA235-102.45	BOLT		DACROMET 500	
111	1	DIN440-R18-tZn	WASHER			
110	4	DIN6912-M4x10-Zn	BOLT			
109	4	LS100/14 K	CLAMP			VEND.:MULBROD
108	4	DIN6912-M16x40-10.9-VDA235-102.45	BOLT		DACROMET 500	
107	4	DIN444-BM16x80-12.9-VDA235.102.45	RINGBOLT		DACROMET 500	
106	4	DIN6797-J16.5-ZN	WASHER			
105	4	DIN934-M16-12-VDA235-102.45	NUT		DACROMET 500	
104						
103						
102	2	U09	GUIDE ROLLER			
101	1	SUBUNIT CONSIST OF PART 102-115,201,401-402				

GRIEPENBURG	07.12.94	A300-600ST	DIN 7168mittel	D1081
				AO
		STANDARD BASEMENT - LONGITUDINAL BEAM ASSEMBLY (LONG VERSION) -		1:2.5 (1:10)
TVF23		SE - 316		01 01/04