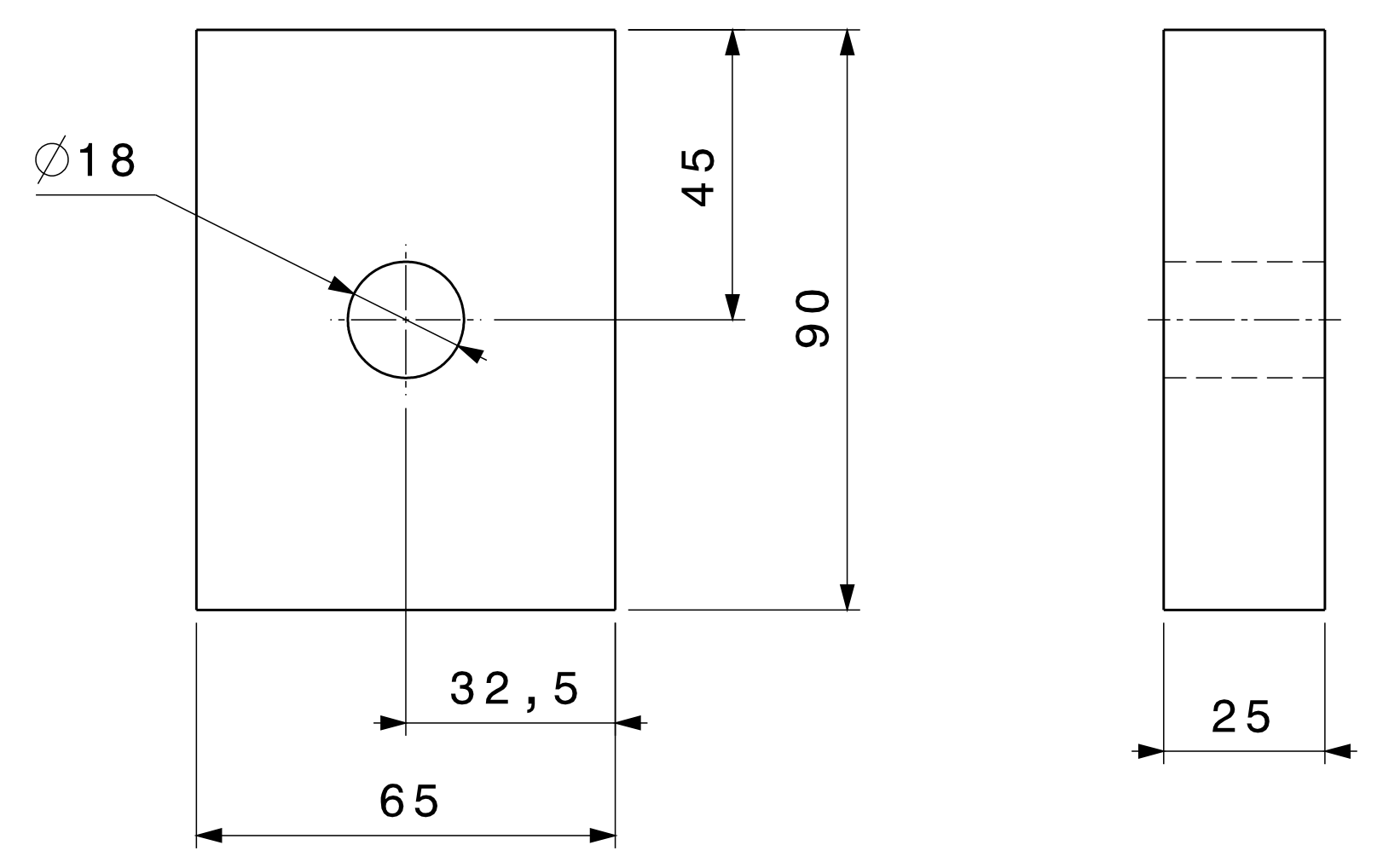


Detail A
Scale: 1:5

POS. 1 (Scale 1:1)



| 9 | 40 | DIN EN ISO 4014 - M16 x 55 - 10.9 | - | Sechskantschraube - M16 x 55 - 10.9 | - | - | - |
|-----|------|-----------------------------------|-----------|-------------------------------------|--------------|--------|-----------|
| 8 | 80 | DIN 6796 | - | Spannscheibe DIN 6796 16 | - | - | - |
| 7 | 40 | DIN EN 24032 M16-10 | - | Sechskantmuttern M16-10 | - | - | - |
| 6 | 20 | SE 316-05 | - | WELDED-GROUP | - | - | - |
| 5 | 2 | SE 316-11 | - | RESCUE-DEVICE | - | - | - |
| 4 | 4 | SE 316-07 | - | SQUARING BEAM | - | - | - |
| 3 | 6 | SE 316-05 | - | CROSS-BEAM | - | - | - |
| 2 | 2 | SE 316-01 | - | LONGITUDINAL BEAM | - | - | - |
| 1 | 2 | 1.0570 | 01 01 001 | DISTANZPLATTE | 90 x 65 x 25 | 1100 g | - |
| POS | STCK | TEILESTAMMDATEN | PART-NAME | BENENNUNG | ABMASSE | MASSE | BEMERKUNG |

| | | | | |
|--|----------------------|-----------------------------|-----------------------------|--|
| SURFACE FINISH DIN ISO 1302 | | AFFECTATION A/C PART NBR | | SCALE 1:20 (1:5 1:1) |
| EDGES DIN 6784-D2 | | A/C DRWG NBR | | |
| PLANT DEPARTMENT | HAMBURG TMDAAJ1 | SHEET | ISSUE | |
| DRN DATE | D. Albu 22-May-12 | CHKD DATE | | GENERAL TOLERANCES DIN ISO 2768-m-K |
| MANUF. CODE D0181 | APPD DATE | | | |
| F534-70010-000-W8200-09A00 01-01-000 | | | FIRST ANGLE PROJECTION | SIZE A0 |
| SHEET 01 OF 01 SHEETS | | | TITLE UNTERRAHMEN HINTEN | A00 ISSUE |
| COMPUTER PRODUCED DRAWING USING CATIA V5... NO MANUAL ALTERATION | | | | |

BEI POS.6, POS.7, POS.8 UND POS.9 BESCHICHTUNG MIT "DACROMET 500".
ANZUGSMOMENT 200Nm.

